



Tavares Design Associates, Inc.

Equipment Consultants • Facilities Planners

Science Labs

Description/Assessment:

- The science labs consist of two types. The full lab (lecture/lab) is very under sized for a full lab and today's standards. The labs appear to range around 900sqft.
- The main lab has center island lab stations. None of these are handicap accessible. They do not conform to the current Lab design for Massachusetts public schools.
- The lab includes one fume hood. This is not a pass thru which conflicts with the current MSBA guidelines. These fume hoods are not handicap accessible.
- There are additional classrooms used for lecture. These classrooms have a fixed demo island.
- The classroom tables have phenolic tops and are scratched and worn.
- The fixed teacher lecture benches are not handicap accessible.
- In general the counter tops are very worn and damaged. Many cuts and exposed underlayment were observed.

Science Classroom



Lecture Bench



Recommendation:

- *Revise labs to conform to the current MSBA guideline.*
- *No fixed lab benches*
- *Pass thru fume hoods*
- *Mobile tables with locking casters.*

General Furniture

Description/Assessment:

- Classroom furniture is a mix of old and new. The student furniture is hard plastic with attached chair/desk unit. These do not allow for easy 21 century collaborative learning. See picture.
- Cafeteria furniture appears to be newer.

Classroom Furniture



Cafeteria Furniture



Recommendation:

- *Update furniture to current educational standards. Movable desks and tables.*
- *Teacher desk to be updated to mobile worksurface.*

Main Kitchen

Description/Assessment:

- Kitchen Equipment is generally older and rusted.
-
- Hand sinks require updated faucets and raised height. They are not accessible and don't meet health standards. No blade handles or sensors
- The main cooking hood does not cover the equipment and has no fire suppression system.
- The hood has no filler panel to ceiling and shows crease running on the vertical surfaces.
- The walk-in Boxes have replacement doors but no view windows or dial thermometers are apart of the package.
- Serving line component sneeze-guards do not meet current NFS standards.

Hood



Hood



Hood



Walk-in Box



Walk-in Box



Sneeze-guard



Recommendation:

- *Update entire kitchen.*
- *Bring kitchen to current NFS standards*
- *Hood to be updated to energy efficient model which covers cooking equipment.*

Gymnasium

Description/Assessment:

- Telescoping bleachers are older. They do not have distributed ADA positions.
- There are four side court, rectangular wood backboards. Ceiling mounted.
- There are two main court, glass back boards, ceiling hung. These appear newer.
- One main roll up curtain divides the space. The condition is dirty but functioning.

Bleacher



Bleacher



Recommendation:

- Updated bleachers to current ADA and safety standards.

Backstops – Main Court



Backstops – Side Court



Recommendation:

- Updated backstops to current safety standards.
- Replace side court backstops.

Stage

Description/Assessment:

- Stage has a few curtains, including valance, main draw, intermediate valance, leg sets and a rear draw.
- Several curtains are ripped.
- There are no acoustical clouds on the stage which is seen in most modern projects.
- Most of the rigging is dead hung, not allowing for easy replacement of scenery or lights.

Leg Set



Rear Curtain



Recommendation:

- *Replace all drapery.*
- *Add line sets for added pipe for scenery.*
- *Possible counterweight sets.*

Vocational Programs

Culinary Arts

Description/Assessment:

- Kitchen Equipment is generally older and rusted.
- Hand sinks require updated faucets and raised height. They are not accessible and don't meet health standards. No blade handles or sensors
- The hood has no filler panel to ceiling and shows crease running on the vertical surfaces.
- The walk-in Boxes have replacement doors, but no view windows or dial thermometers are apart of the package.
- Dishwasher empties into a hole. No grate. Rusted.

Hood



Dishwasher



Recommendation:

- *Update entire kitchen.*
- *Bring kitchen to current NFS standards*
- *Hood to be updated to energy efficient model which covers cooking equipment.*

Robotics

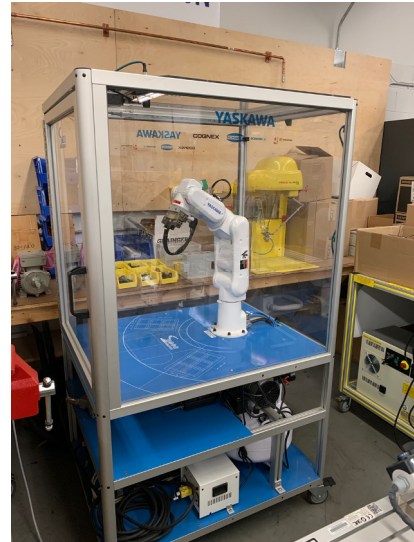
Description/Assessment:

- Shop Space is divided into two spaces using cabinetry. One side a workspace and the other a classroom space.
- Many of the equipment items appear to be newer, including robotic arms and CNC router.
- Classroom space has newer workbenches with overhead power.

Classroom



Robot Arm



Recommendation:

- *Create better storage and flow.*
- *Increase overhead power for flexibility*
- *Add ventilation for possible added equipment.*

Plumbing Shop

Description/Assessment:

- Shop Space is a large open space .
- The worktables are well worn and tops are flaking off.
- The teacher space is raised and does not meet ADA code.
- Very little large equipment. One hot water heater and one furnace.
- There appear to be no floor drains in the plumbing shop.

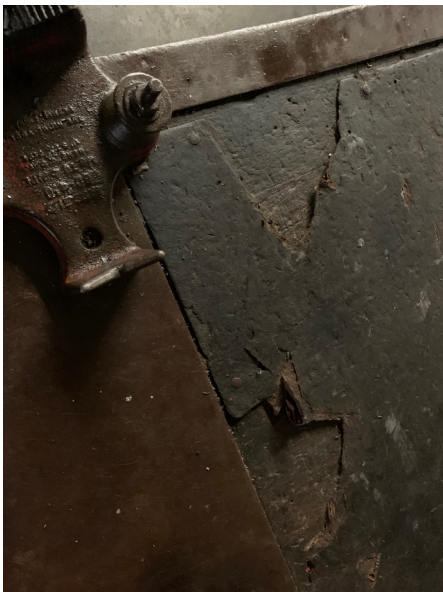
Shop



Equipment



Worktables



Recommendation:

- Add floor drains for equipment.
- Increase space for furnaces
- Increase booths on main level.

Auto Technology

Description/Assessment:

- Very large shop space with well maintained equipment.
- The equipment includes 11 two post lifts and one alignment rack, tire changes, wheel balancer.
- A separate space within the overall shop has a small engine repair space.
- Some workbenches need replacement.

Small Engine Repair



Shop



Recommendation:

- Update workbenches and misc. equipment.
- Curtain off wash bay

Welding/Sheet Metal

Description/Assessment:

- Very large shop with many welding booths.
- Most equipment is newer with each welding station having its own welder.
- Some older equipment would need replacing, including drill press.
- Ventilation has been provided at each booth.
- Space is laid out well with safe travel lanes around equipment.

Shop



Welders



Recommendation:

- *Replace some older welding equipment.*
- *Create better spacing around robotic welder*

HVAC

Description/Assessment:

- Very large shop with many wiring booths.
- Space has been devoted to Condensing units, boilers, etc.
- A central space for classroom work with older but in good shape worktables.
- A lack of storage requires parts and pieces being stored above booths.

Classroom



Booths



Auto Body

Description/Assessment:

- Very large shop space.
- Several full car spray booths. One newer (GFS) and one older booth.
- Two parts booths. One open face and one closed door booth.
- A paint mixing room, not attached to any of the booths.
- Shop also includes a frame machine and two post lift.

Older Booth



New Booth



Recommendation:

- *Replace some older welding equipment.*
- *Remove older spray booth*
- *Add space around spray booths to allow for better access to panels.*

Carpentry

Description/Assessment:

- Large shop space with a mix of new and old equipment.
- Floor markings with safety markings are in most areas.
- Dust collector attached to most equipment. Dust collector outside.
- Some workbenches need replacement.

CNC Router



Workbench



Equipment



Dust Collector



Recommendation:

- *Replace older drill press and saws equipment.*

CAD/Design

Description/Assessment:

- Computer lab equipment on old tables.
- Several plotter/scanners, newer.
- Two separate labs with between 25 and 27 computers

Computers



Plotters



Worktables



Equipment



Recommendation:

- *Replace computer tables.*
- *Revise power locations and add data.*

Cosmetology

Description/Assessment:

- Two large lab spaces with older caseloads
- Most styling stations have chips and broken outlets.
- No separate space for facials
- No manicure space
- Dispensary very narrow and no storage cabinets for chemicals.

Styling Stations



Facials Bed



Dispensary



Recommendation:

- *Replace all styling stations and wet stations.*
- *Increase dispensary*
- *Add manicure space with venting*
- *Create area for facials bed*

Dental

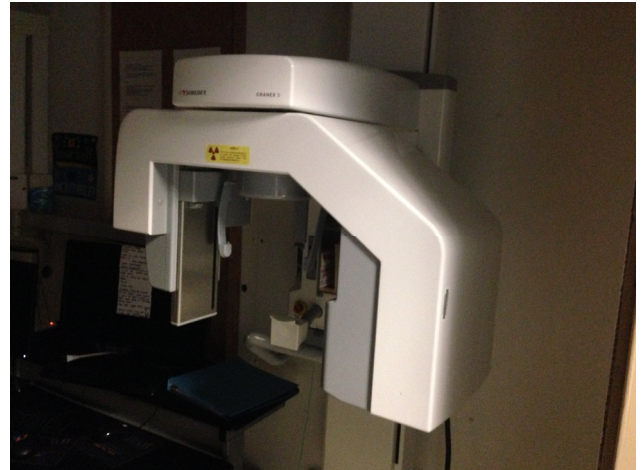
Description/Assessment:

- Overall space contains 5 dental chairs.
- Equipment includes, Pano X-ray, model trimmers, ultra sonic machine, heat dryer and arm xray.
- Two separate labs with between 25 and 27 computers
- Cabinetry is generally newer.

Chairs



Pano



Compressor



Equipment

