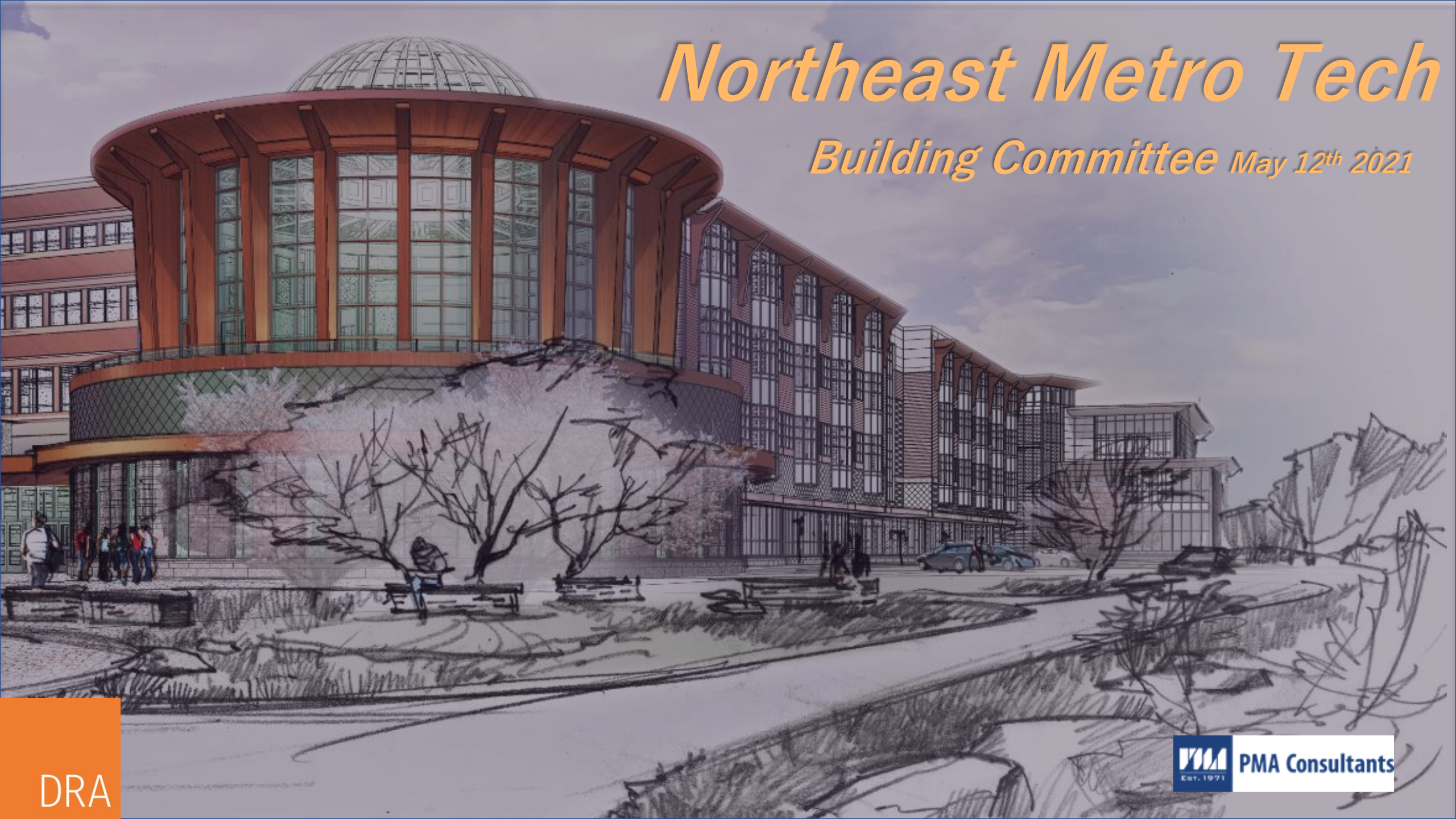


Northeast Metro Tech

Building Committee May 12th 2021



Agenda

- SBC Vote to Approve Prior Minutes (04/08/2021)
- OPM Update
 - Budget, Schedule, CMR Procurement
- Designer Update
 - Updated Building Design
 - MSBA Schematic Design Requirements
- New Business

Budget Update

Northeast Metro Tech- Budget Update			
	Contract Amount	Billed to Date	Remaining
PMA Consultants	\$ 510,056.00	\$ 270,895.50	\$ 239,160.50
DRA (Base Contract)	\$ 1,075,000.00	\$ 785,900.00	\$ 289,100.00
CDW (Haz-Mat)	\$ 19,547.00	\$ 17,523.84	\$ 2,023.16
LGCI (Geotech.)	\$ 99,318.00	\$ 26,108.50	\$ 73,209.50
Nitsch (Traffic/Site Survey)	\$ 173,800.00	\$ 104,629.74	\$ 69,170.26
Totals	\$ 1,877,721.00	\$ 1,205,057.58	\$ 672,663.42
Northeast Metro Tech- MSBA Reimbursement			
	Amount Submitted	Reimbursement Received	Percentage
Propay Request #001	\$ 103,348.00	\$ 65,461.00	63.34%
Propay Request #002	\$ 131,385.00	\$ 83,219.00	63.34%
Propay Request #003	\$ 111,965.00	\$ 70,919.00	63.34%
Propay Request #004	\$ 237,087.00	\$ 150,170.00	63.34%
Propay Request #005	\$ 244,945.00	\$ 155,148.00	63.34%
Propay Request #006	\$ 97,222.00	\$ 61,580.00	63.34%
Pending Propay Request #007	\$ 279,109.00	\$ 176,787.64	63.34%
Totals	\$ 1,205,061.00	\$ 763,284.64	63.34%

Schedule/Key Project Milestones

MSBA Module #2 <i>Forming the Project Team</i>	MSBA Module #3 <i>Feasibility Study</i>	MSBA Module #4 <i>Schematic Design</i>	MSBA Module #5 <i>Funding the Project</i>
<u>AUGUST 2019</u> OPM Selection	<u>JANUARY 2020</u> Begin Feasibility Study	<u>JANUARY 2021</u> Begin Schematic Design	<u>LATE DECEMBER 2021</u> Local funding approval deadline
<u>JANUARY 2020</u> Designer Selection	<u>AUGUST 2020</u> SBC approves PDP Submit PDP to MSBA	<u>JUNE or JULY 2021</u> SBC approves SD/DESE design package	
	<u>SEPTEMBER 2020</u> SC approves Education Plan	<u>JULY 2021</u> Submit SD/DESE to MSBA MSBA FAS Meeting	
	<u>DECEMBER 2020</u> SBC approves PSR Submit PSR to MSBA	<u>AUGUST 2021</u> MSBA BOD approves project scope & budget	
	<u>JANUARY 2021</u> MSBA FAS Meeting		
	<u>FEBRUARY 2021</u> MSBA BOD approves PSR		



PMA Consultants

Acronym glossary

BOD – Board of Directors (MSBA)
DESE – Massachusetts Department of
Elementary & Secondary Education
Ed. Plan – Educational Plan
FAS – Facilities Assessment Subcommittee

ISS – Initial Space Summary
MSBA – Mass. School Building Authority
OPM – Owner's Project Manager
PDP – Preliminary Design Program
PSR – Preferred Schematic Report

SBC – School Building Committee
SC – School Committee
SD – Schematic Design

Updated 05.12.2021

CM@Risk: Procurement Update



Request for Proposals (RFP)

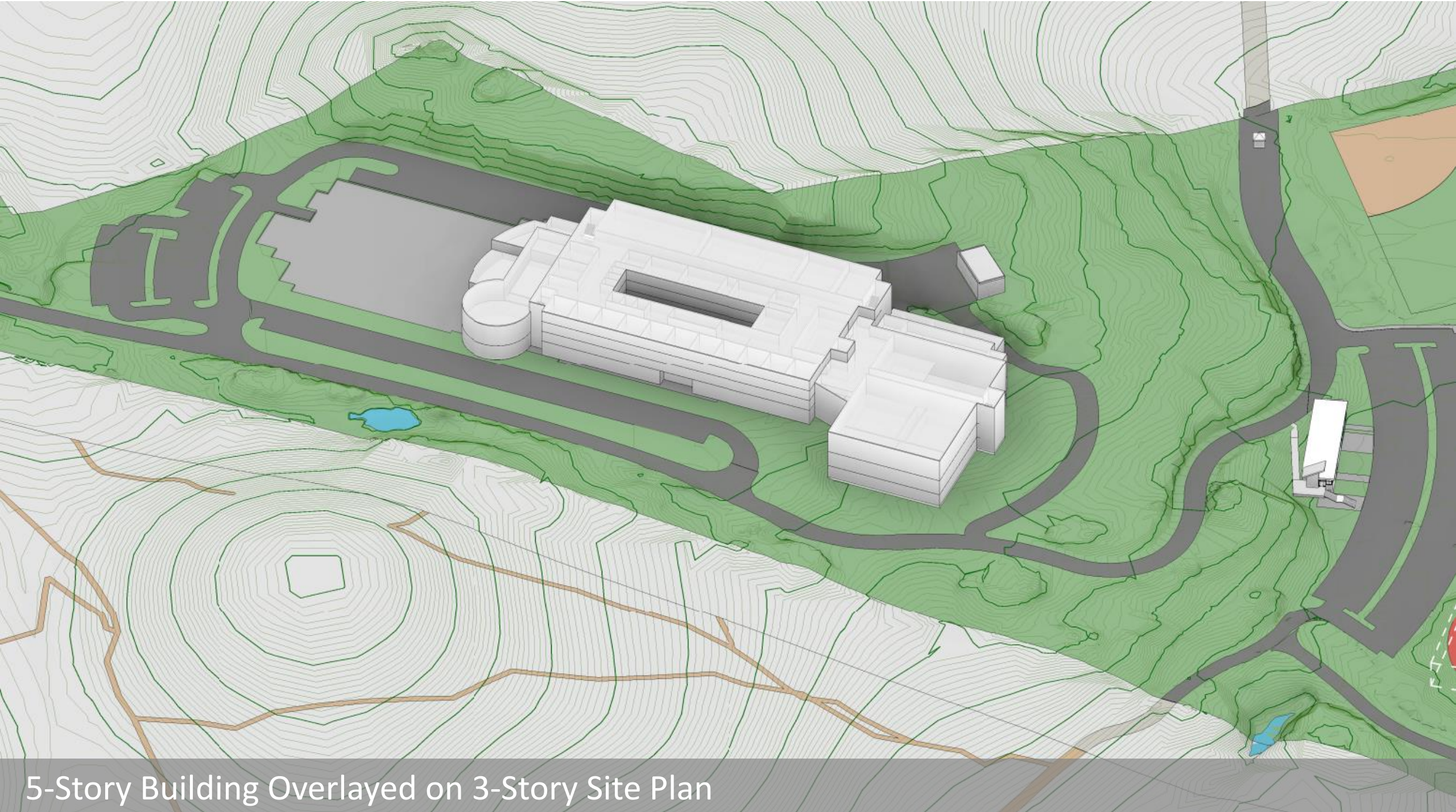
- Issue RFP to pre-qualified firms **(Completed 4/9/2021)**
 - **Four firms prequalified: Consigli, Gilbane, Suffolk, and Turner**
- Deadline for questions from firms **4/23/2021**
- CMR Price and Non-price proposals received **(Completed 4/30/2021)**

Select CM@ Risk Firm

- Prequal. & Selection Committee ranks non-price proposals **(Completed 5/3/2021)**
- CMR Interviews **(Completed 5/11/2021 and 5/12/2021)**
- CMR Selection Committee reviews leveled price proposals **(Completed 5/12/2021)**
- CMR Selection Committee ranks firms and makes selection **(Completed 5/12/2021)**
- Notice of Intent to award contract on or before 5/14/2021, contract finalized on or before 5/21/2021



Building Massing – *(previous)*

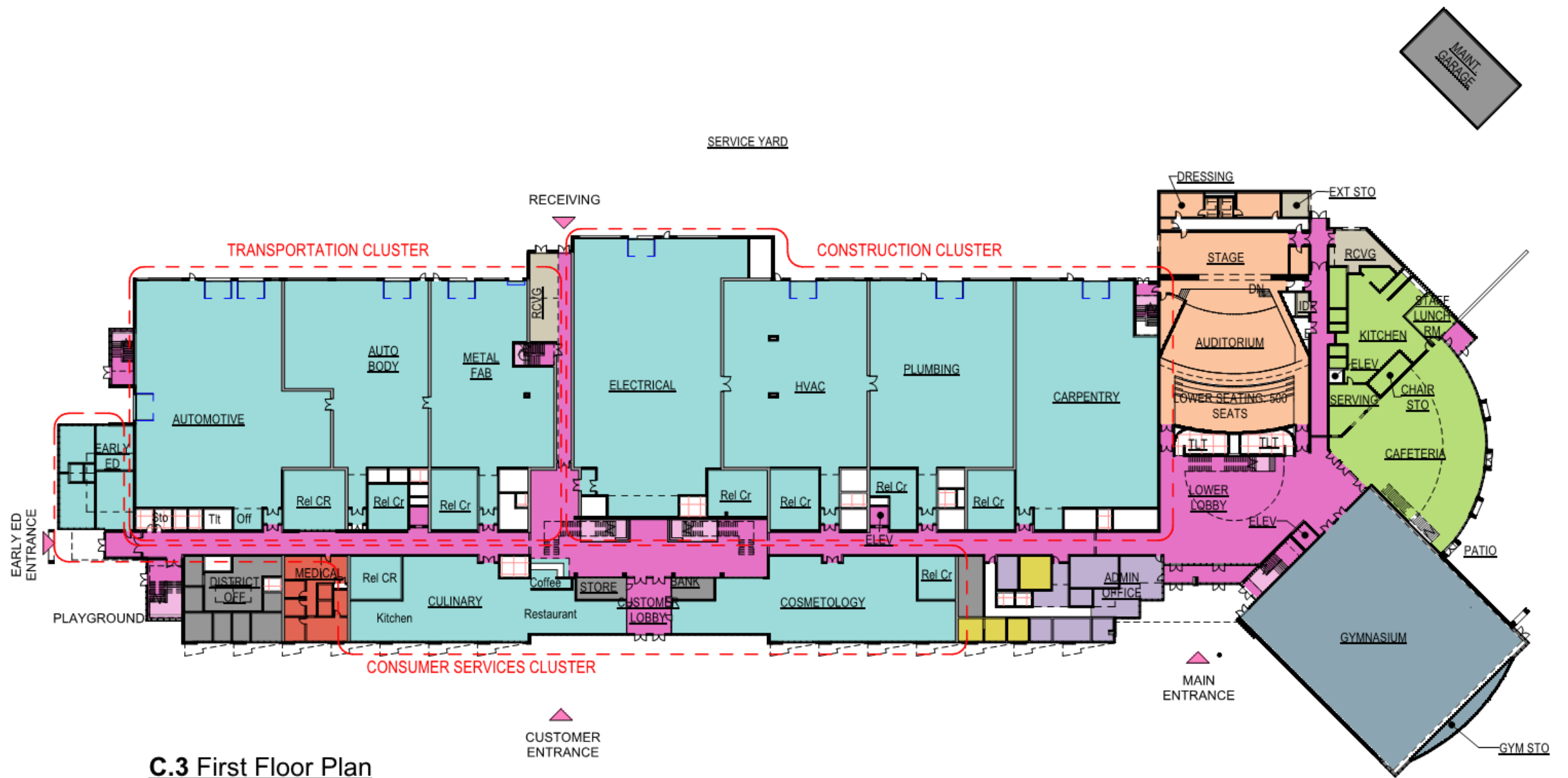


5-Story Building Overlaid on 3-Story Site Plan



AREAL VIEW – LOOKING SOUTH



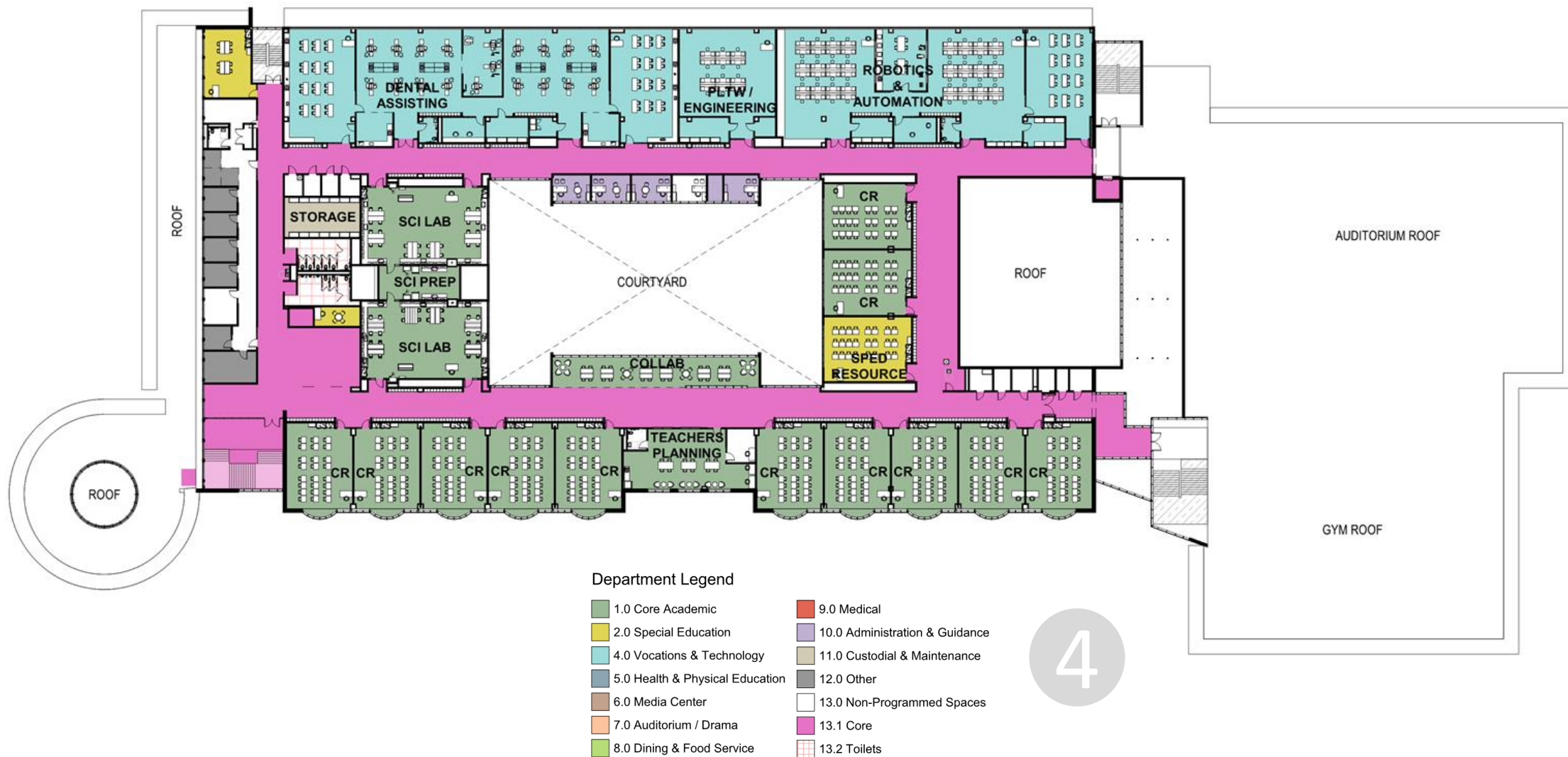




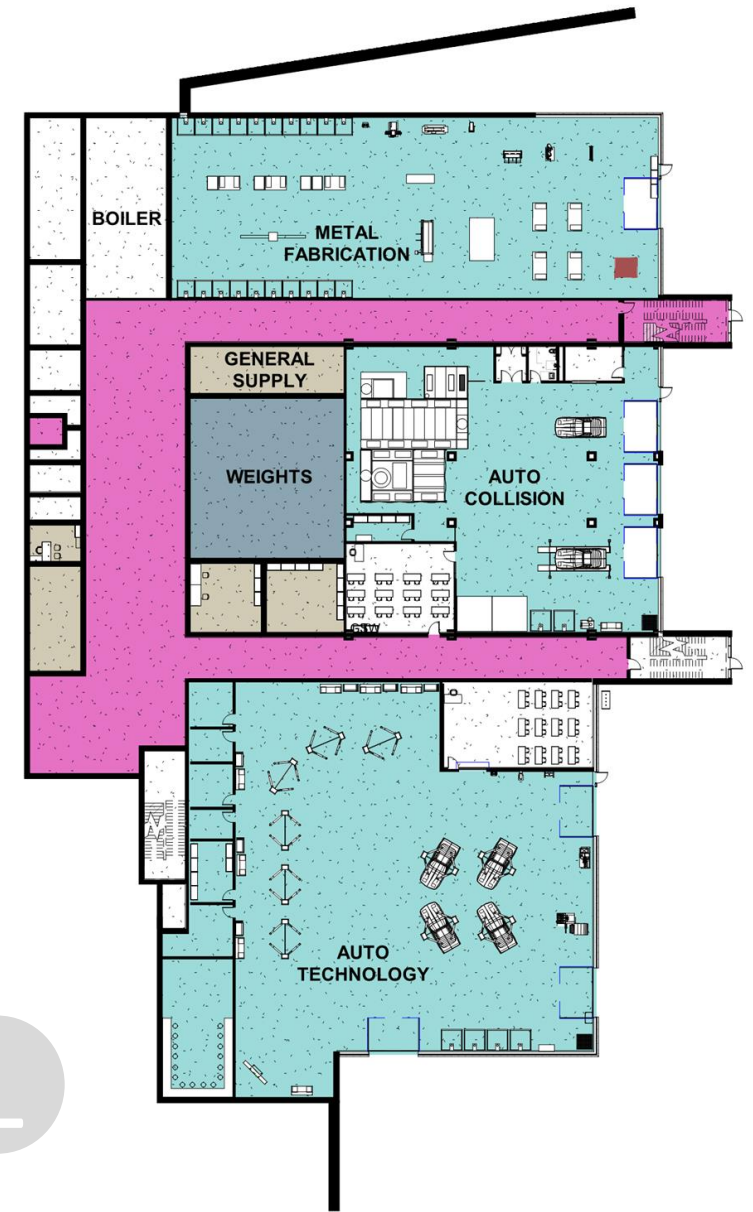
First Level - Floor Plan



Third Level - Floor Plan



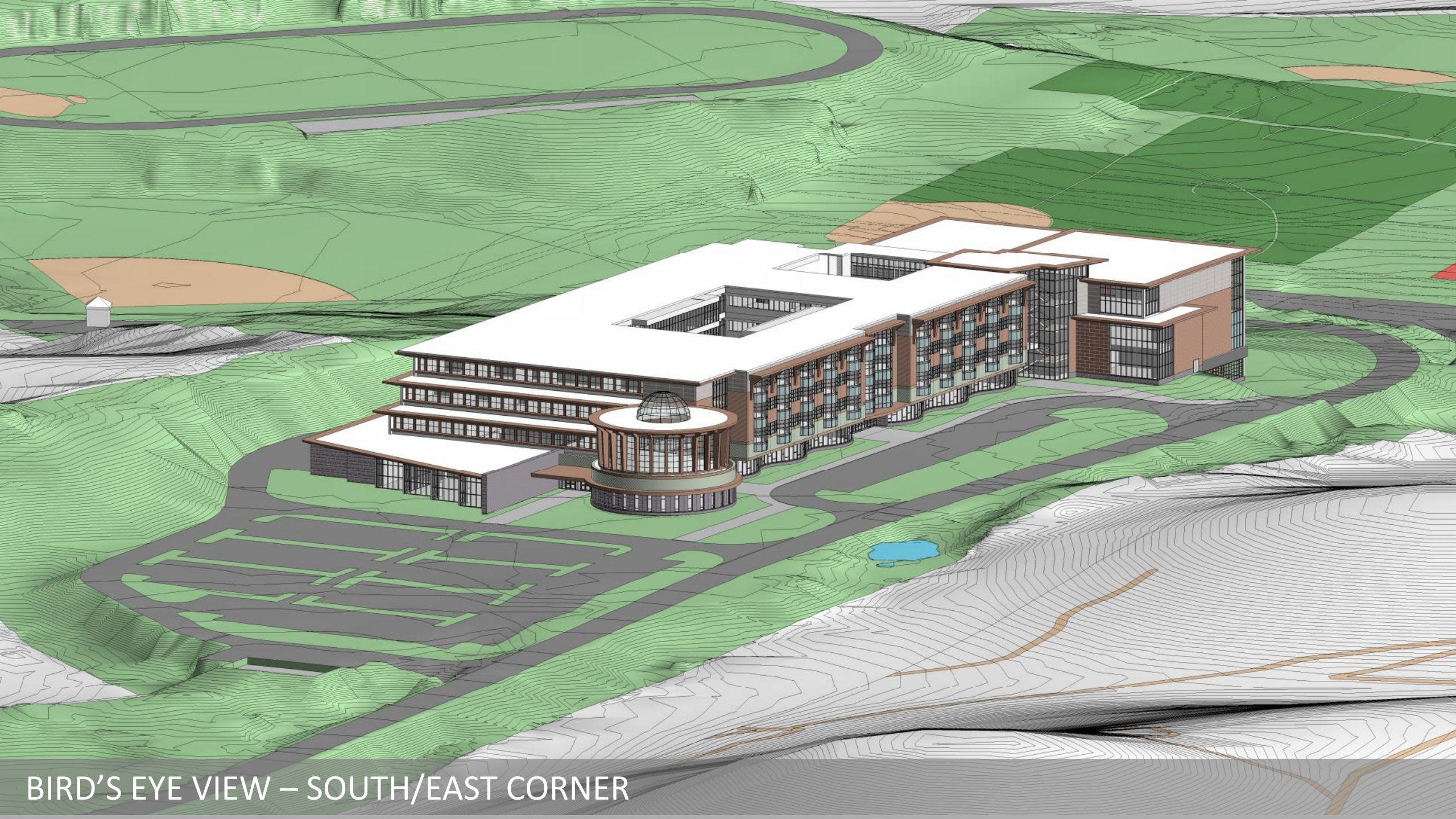
Fourth Level - Floor Plan



Department Legend

1.0 Core Academic	9.0 Medical
2.0 Special Education	10.0 Administration & Guidance
4.0 Vocations & Technology	11.0 Custodial & Maintenance
5.0 Health & Physical Education	12.0 Other
6.0 Media Center	13.0 Non-Programmed Spaces
7.0 Auditorium / Drama	13.1 Core
8.0 Dining & Food Service	13.2 Toilets

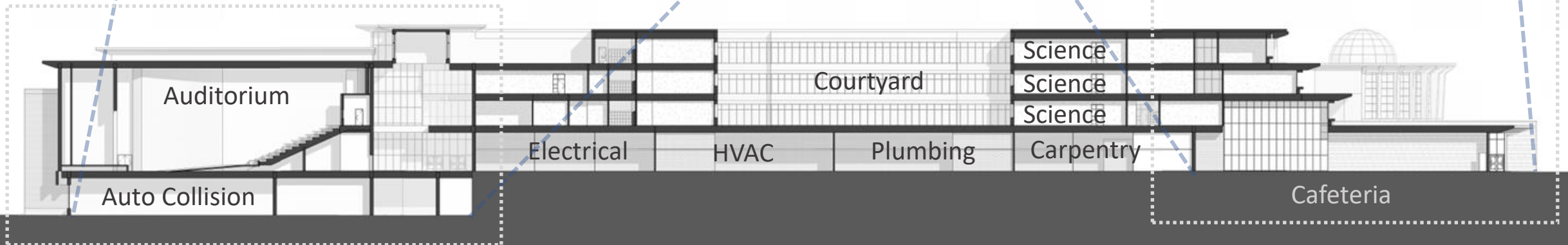
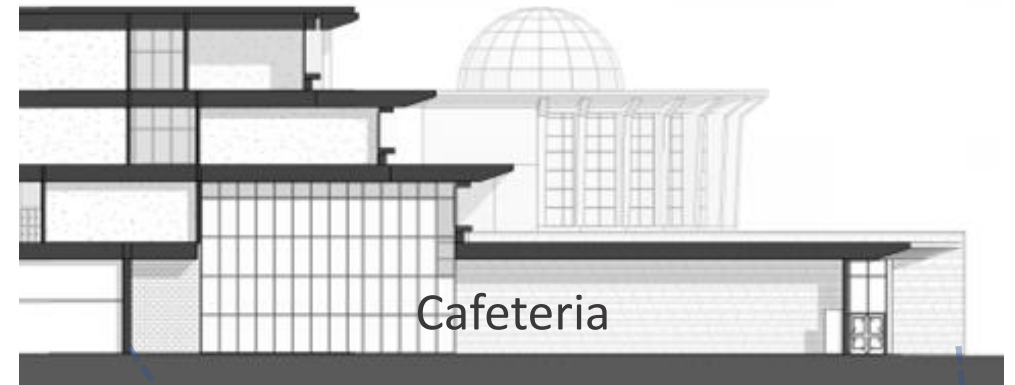
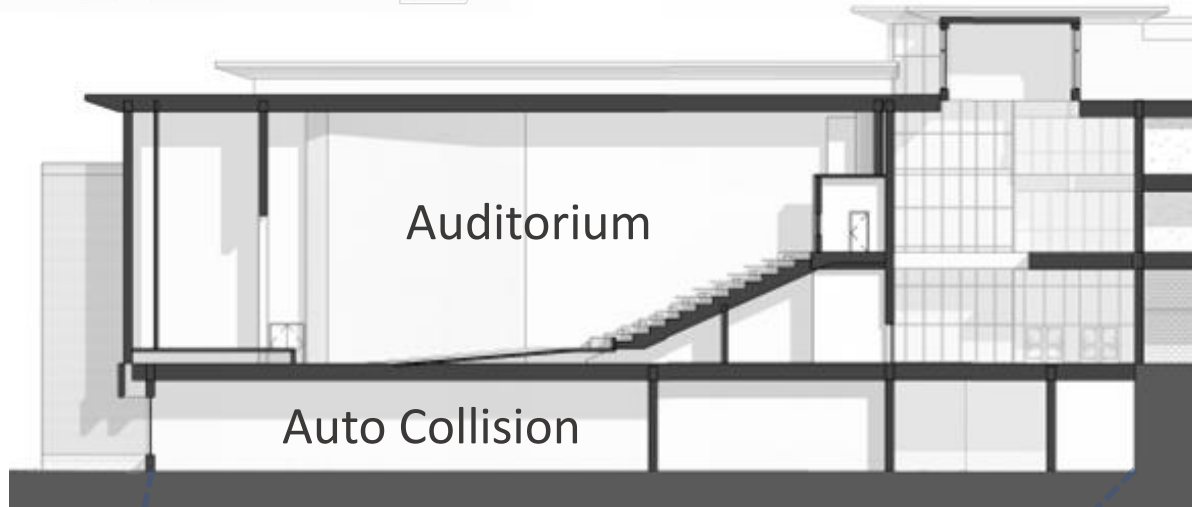




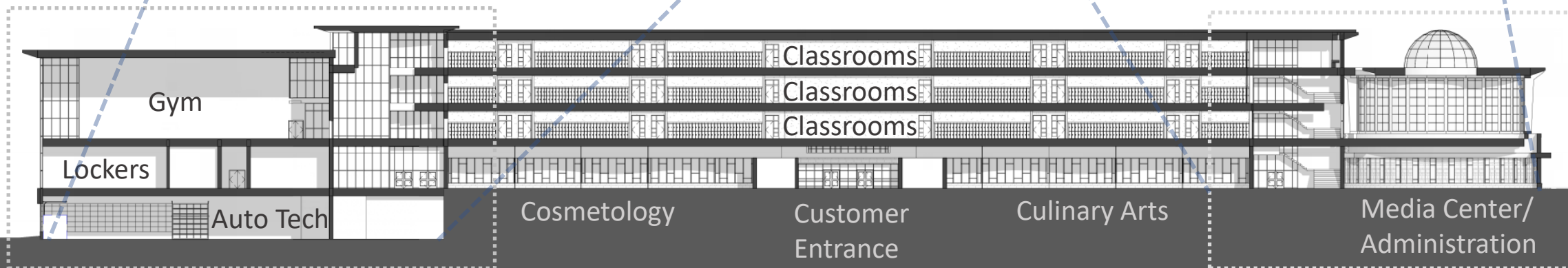
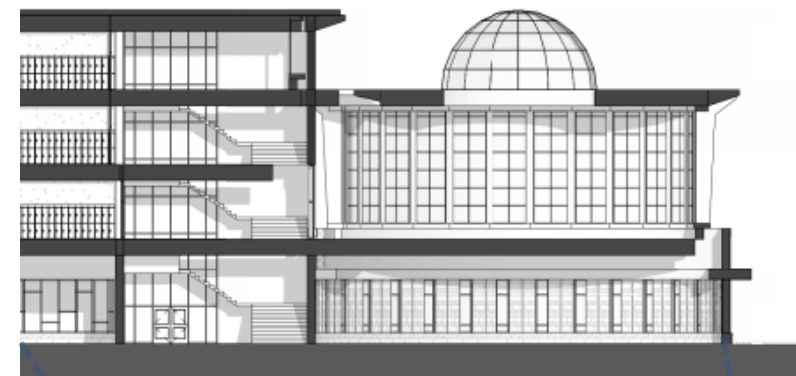
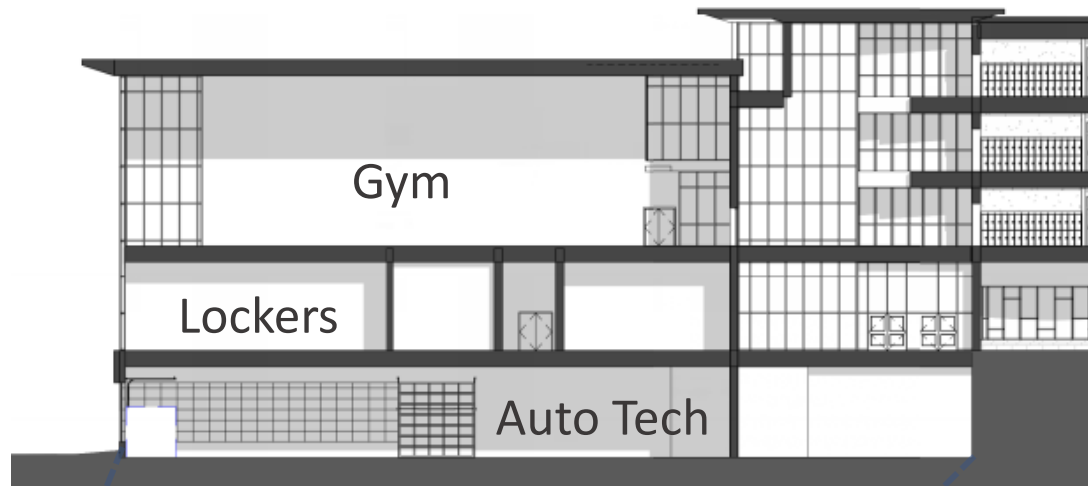
BIRD'S EYE VIEW – SOUTH/EAST CORNER



BIRD'S EYE VIEW – NORTH/EAST CORNER



Building Sections



Building Sections



Front Entry Rendering



Front Entry Rendering



Media Center - Entrance





Exterior View Towards Media Center, Classrooms, Culinary Arts & Cosmetology



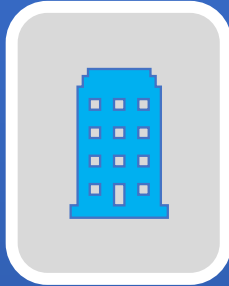
Events Lobby – Viewed from Entry



Events Lobby – From Second Floor Looking at Stair Tower

SCHEMATIC DESIGN SUBMITTAL

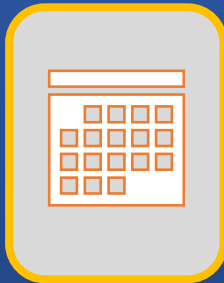
- Scope



- Budget



- Schedule



- Department of Elementary and Secondary Education (DESE)
Submittal *(regarding Special Education)*
- Schematic Design Binder
- Schematic Design Drawings
- Schematic Design Project Manual (Outline Specifications)

Table of Contents

SCHEMATIC DESIGN SUBMITTAL

4.1.2 Schematic Design Binder

4.1.2-01 Introduction

4.1.2-02 Final Design Program

Educational Space Summary (Signed)

Space Measurement Analysis w/ Designer Certification

Site Plan

Phasing Plans

4.1.2-03 Traffic Analysis

4.1.2-04 Environmental & Existing Building Assessment

4.1.2-05 Geotechnical Analysis

4.1.2-07 Code Analysis

4.1.2-07 Utility Analysis

4.1.2-08 Massing Study

4.1.2-09 Narrative Building Systems

4.1.2-10 Sustainable Design Guideline Documents

4.1.2-11 ADA/MAAB Analysis

4.1.2-12 Room Data Sheets

4.1.2-13 Proposed Construction Methodology

4.1.2-14 District's Anticipated Reimbursement Rate

4.1.2-15 Total Project Budget

Total Project Budget Spreadsheet – Form 3011

District Financial Projections

Furniture and Equipment Budget

Technology FFE Budget

4.1.2-16 Designer's Construction Cost Estimate

4.1.2-17 OPM's Construction Cost Estimate

4.1.2-18 Updated Project Work Plan

Project Work Plan

Project Schedule

Project Directory

4.1.2-19 Local Actions and Approvals

Module-4 Local Actions and Approval Certification

Meeting Minutes

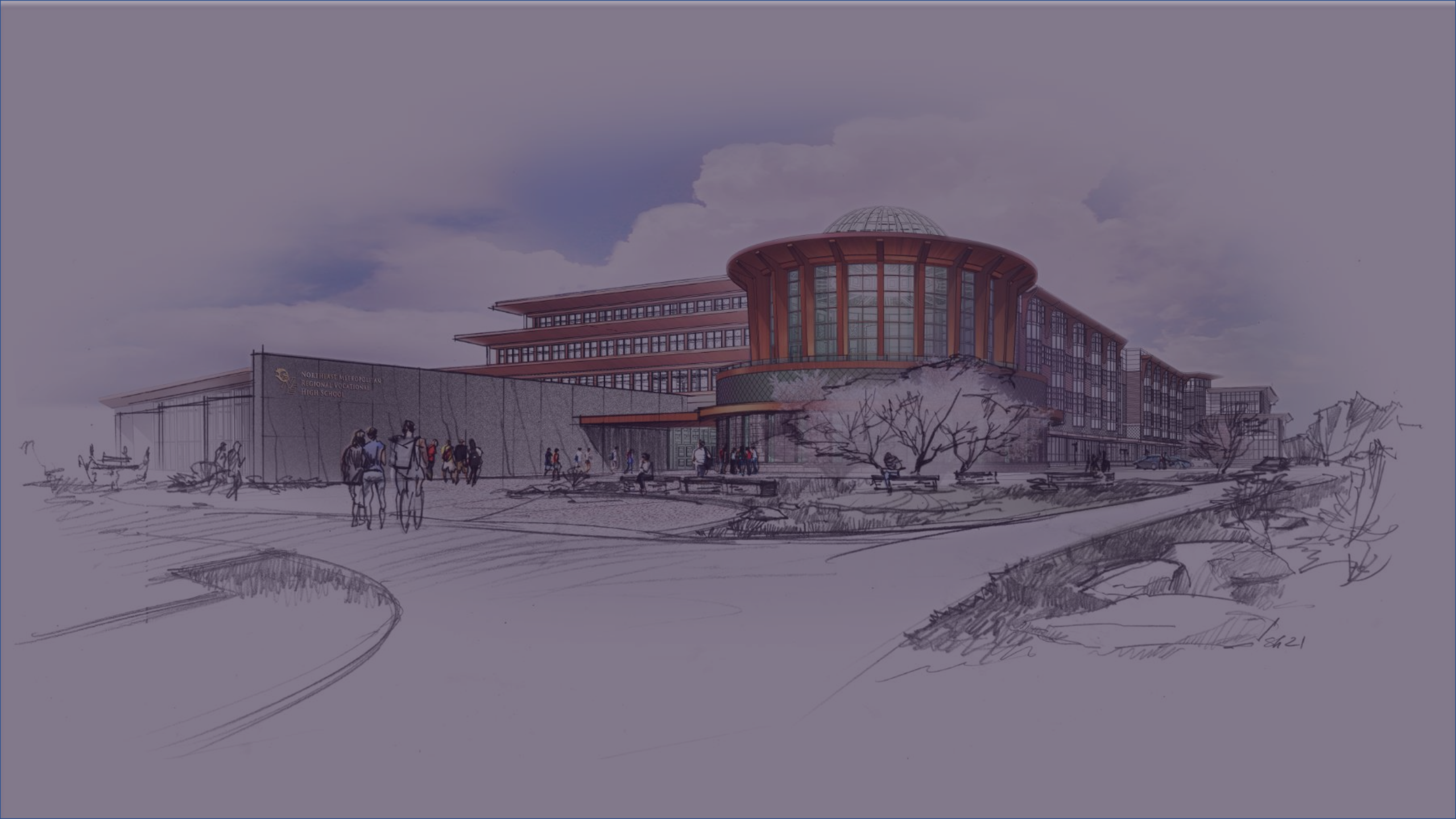
4.1.3 Schematic Design Project Manual Table of Contents
(2 complete Project Manuals submitted separately)

4.1.4 Schematic Design Drawing List (2 half-size drawing sets
submitted separately)

Appendix A Consultant Reports

Appendix B Response to MSBA's Review Comments

Appendix C Thumb Drive



Northeast Metropolitan
Regional Vocational
High School

SK21

Thank You!

NEMT