

Northeast Metro Tech

Building Committee

DRA



PMA Consultants

Gilbane

August 19, 2021

Agenda



- SBC Vote to Approve Prior Minutes (07/01/2021)
- OPM Update
 - Budget, Schedule, MSBA
- Designer Update
 - MSBA Schematic Design Comments & Responses
 - Building Design
 - School Building Committee Feedback
 - Potential Sub-Committees
- New Business

Budget Update



Northeast Metropolitan
Regional Vocational
High School

Northeast Metro Tech- Budget Update			
	Contract Amount	Billed to Date	Remaining
PMA Consultants	\$ 510,056.00	\$ 349,885.50	\$ 160,170.50
DRA (Base Contract)	\$ 1,075,000.00	\$ 1,045,500.00	\$ 29,500.00
CDW (Haz-Mat)	\$ 19,547.00	\$ 18,073.84	\$ 1,473.16
LGCI (Geotech.)	\$ 99,318.00	\$ 86,141.00	\$ 13,177.00
Nitsch (Traffic/Site Survey)	\$ 176,440.00	\$ 148,830.00	\$ 27,610.00
Gilbane (Schematic Design Estimate)	\$ 50,000.00	\$ -	\$ 50,000.00
Totals	\$ 1,930,361.00	\$ 1,648,430.34	\$ 231,930.66
Northeast Metro Tech- MSBA Reimbursement			
	Amount Submitted	Reimbursement Received	Percentage
Propay Request #001	\$ 103,348.00	\$ 65,461.00	63.34%
Propay Request #002	\$ 131,385.00	\$ 83,219.00	63.34%
Propay Request #003	\$ 111,965.00	\$ 70,919.00	63.34%
Propay Request #004	\$ 237,087.00	\$ 150,170.00	63.34%
Propay Request #005	\$ 244,945.00	\$ 155,148.00	63.34%
Propay Request #006	\$ 97,222.00	\$ 61,580.00	63.34%
Propay Request #007	\$ 279,109.00	\$ 176,788.00	63.34%
Propay Request #008	\$ 176,070.00	\$ 111,523.00	63.34%
Propay Request #009	\$ 179,335.00	\$ 113,590.00	63.34%
Anticipated Propay Request #010	\$ 87,869.00	\$ 55,656.22	63.34%
Totals	\$ 1,648,335.00	\$ 1,044,054.22	63.34%

Schedule/Key Project Milestones



Northeast Metropolitan
Regional Vocational
High School

MSBA Module #2 <i>Forming the Project Team</i>	MSBA Module #3 <i>Feasibility Study</i>	MSBA Module #4 <i>Schematic Design</i>	MSBA Module #5 <i>Funding the Project</i>
<u>AUGUST 2019</u> OPM Selection	<u>JANUARY 2020</u> Begin Feasibility Study	<u>JANUARY 2021</u> Begin Schematic Design	<u>LATE DECEMBER 2021</u> Local funding approval deadline
<u>JANUARY 2020</u> Designer Selection	<u>AUGUST 2020</u> SBC approves PDP Submit PDP to MSBA	<u>JUNE or JULY 2021</u> SBC approves SD/DESE design package	
	<u>SEPTEMBER 2020</u> SC approves Education Plan	<u>JULY 2021</u> Submit SD/DESE to MSBA MSBA FAS Meeting	
	<u>DECEMBER 2020</u> SBC approves PSR Submit PSR to MSBA	<u>AUGUST 2021</u> MSBA BOD approves project scope & budget	
	<u>JANUARY 2021</u> MSBA FAS Meeting		
	<u>FEBRUARY 2021</u> MSBA BOD approves PSR		



PMA Consultants

Acronym glossary

BOD – Board of Directors (MSBA)
DESE – Massachusetts Department of Elementary &
Secondary Education
Ed. Plan – Educational Plan
FAS – Facilities Assessment Subcommittee

ISS – Initial Space Summary
MSBA – Mass. School Building Authority
OPM – Owner's Project Manager
PDP – Preliminary Design Program
PSR – Preferred Schematic Report

SBC – School Building Committee
SC – School Committee
SD – Schematic Design

Updated 08.19.2021

MSBA- Anticipated Grant



Northeast Metro Tech- Budget Update

	Preferred Schematic (December 2020)	MSBA Anticipated 08/25/2021 PS&B Approval
Square Footage	383,000	380,570
Design Enrollment	1,600	1,600
Reimbursement Rate	63.34%	76.84%
Total Project Cost	\$317,422,620.00	\$317,422,620.00
Est. MSBA Share	\$117M	\$140.8M
Est. District Share	\$200.4M	\$176.2M

NOTE: Since December 2020 through the upcoming August 25th 2021, MSBA Board of Director's meeting, the District's share of the cost for the project has decreased by almost \$24,000,000.

Schematic Design Update



Recent Activities

- Design Team Meetings- School, local Officials, Police, Fire & Security
- Submitted Schematic Design to MSBA
- Met with Facilities Assessment Sub-Committee (FAS)
- Had Discussions with MSBA Staff
- Received MSBA Review Comments
- Responded to MSBA Review Comments
- Begin Design Development Phase

Schematic Design Update

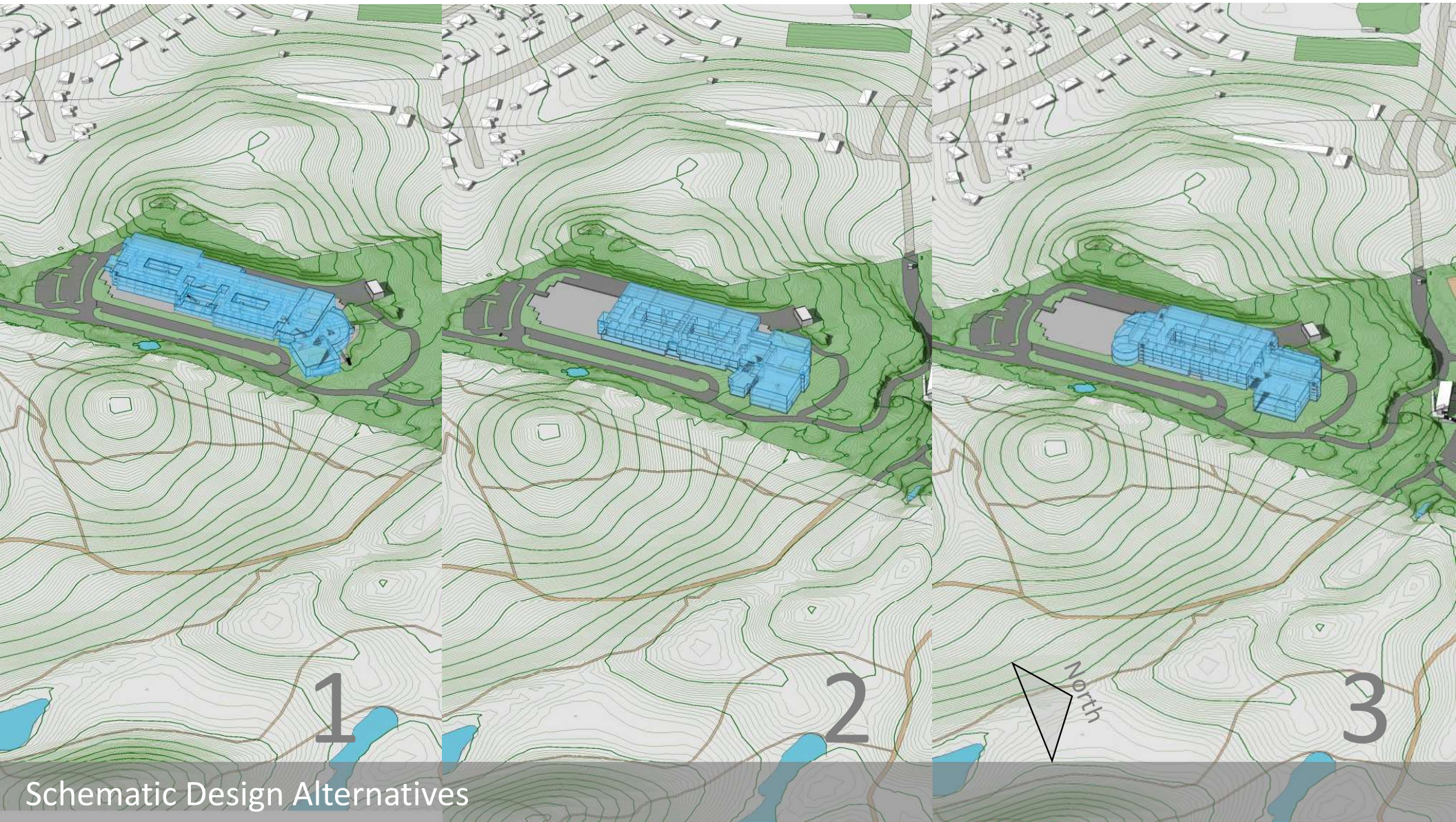
Facilities Assessment Sub-Committee

August 4, 2021

Agenda

- Schematic Design Comparison to Preferred Schematic Design
- Project Impacts
 - Program, Budget, Schedule
- Next Steps
 - Abutter & Community Outreach
 - Approvals





Reduced Footprint / Improved Scale

Increased Separation from abutters

Reduced blasting/follows topography

Closer proximity to lower parking & fields

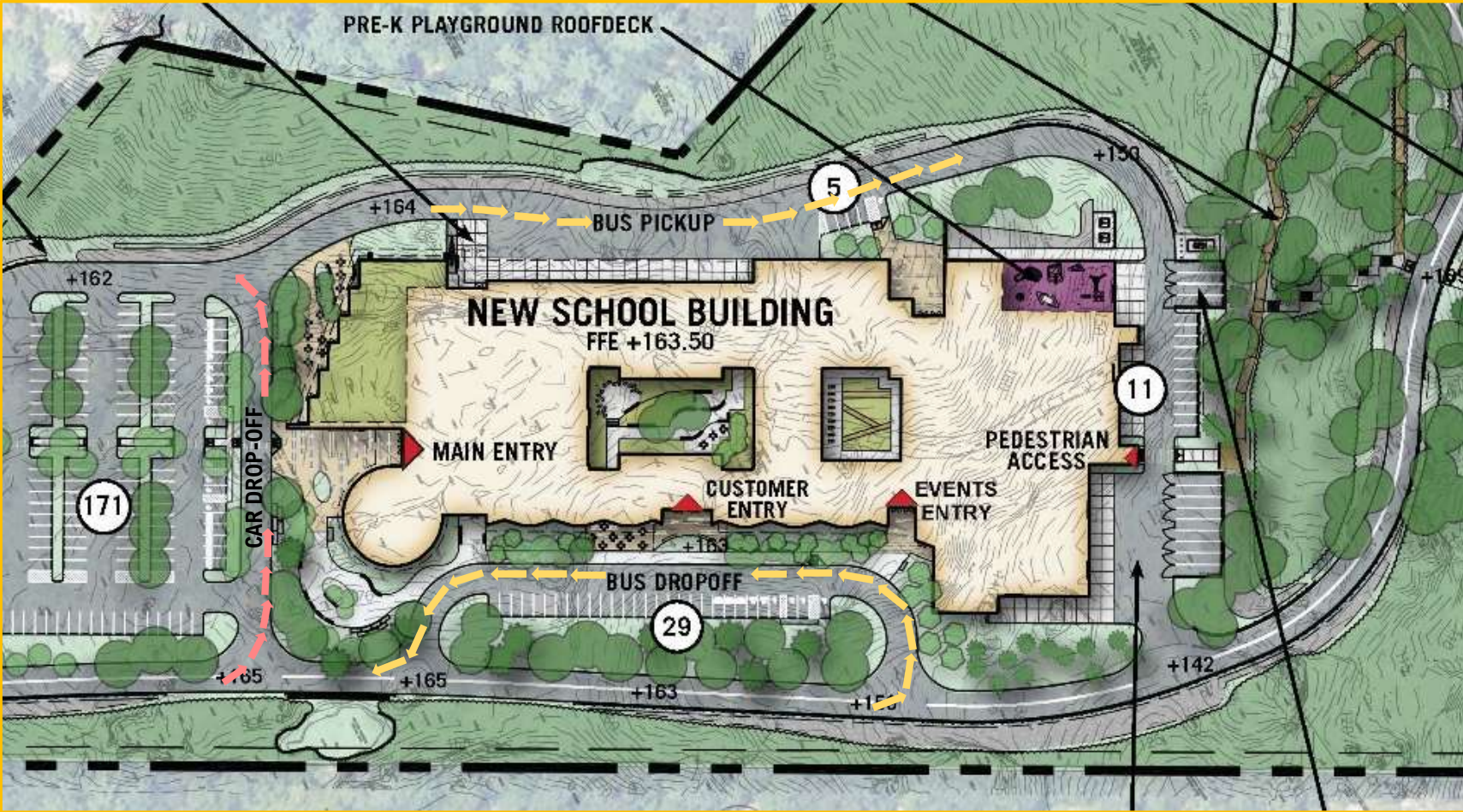
Maintains CTE Clusters

Entrance addresses driveway approach

Increased parking adjacent to main entrance



Site Plan



PROGRESS 6/3/2020

SIONS/RESTROOMS
DING BENCH
RANDSTANDS

HIGH VOLTAGE POWER
UTILITY EASEMENT

Schematic Design Submission



MSBA Review Comments

- Building Orientation & Configuration
- Security & Access Control
- Parking Calculations
- Total Project Budget- eligible, ineligible, alternates
- Space Summary Template- eligible, ineligible
- Future Submittals

Design Development Phase



Next Steps

- Detailed Design of Key Areas, Building Systems, & Materials
- User Meetings with Administration, Key Personnel, & Building Committee
- Community Outreach
- Building Committee Sub-Committees

Events Lobby – Second Floor



Lobby



Precedents



Auditorium

Auditorium



Precedents



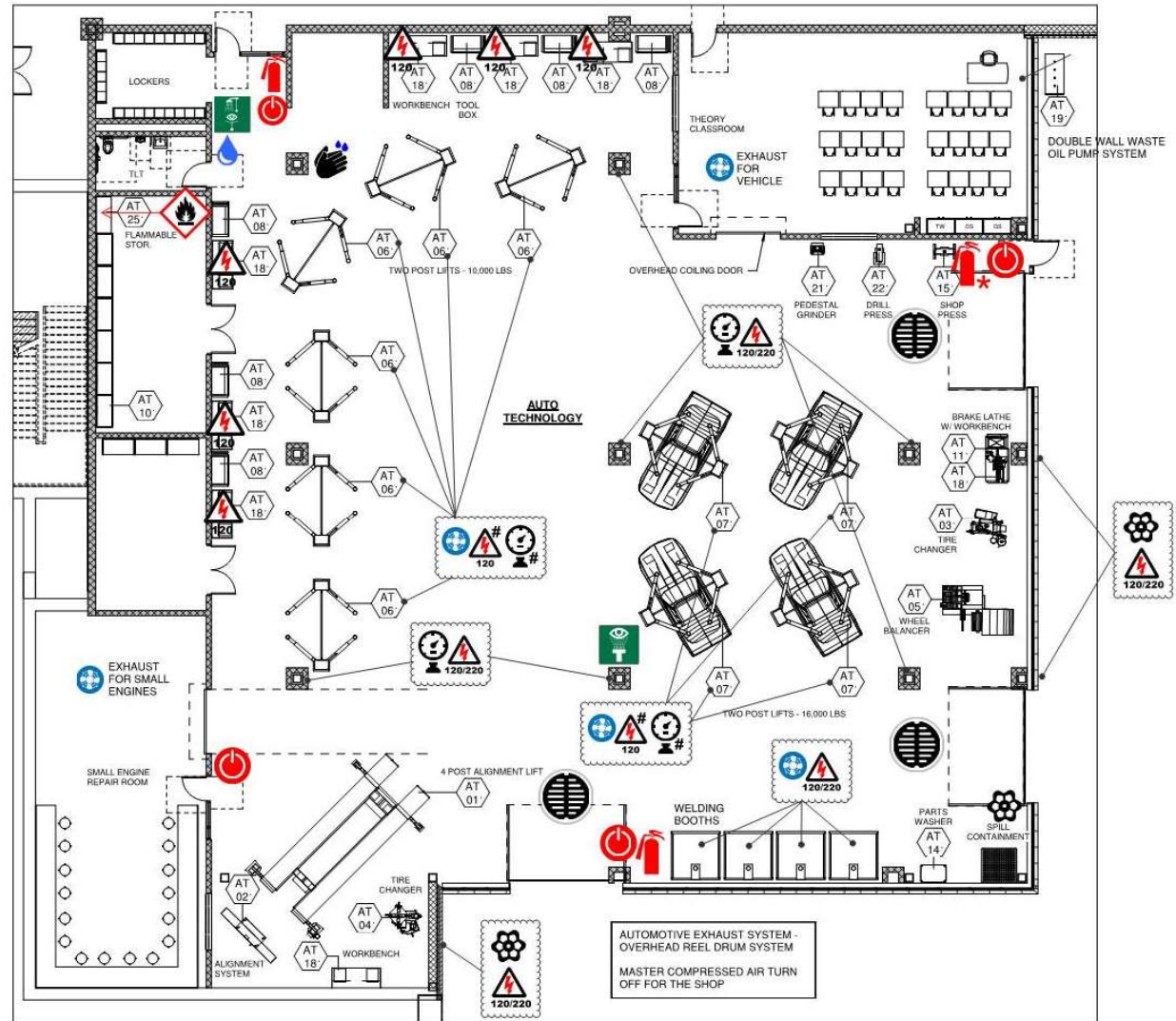
Cafeteria

Cafeteria

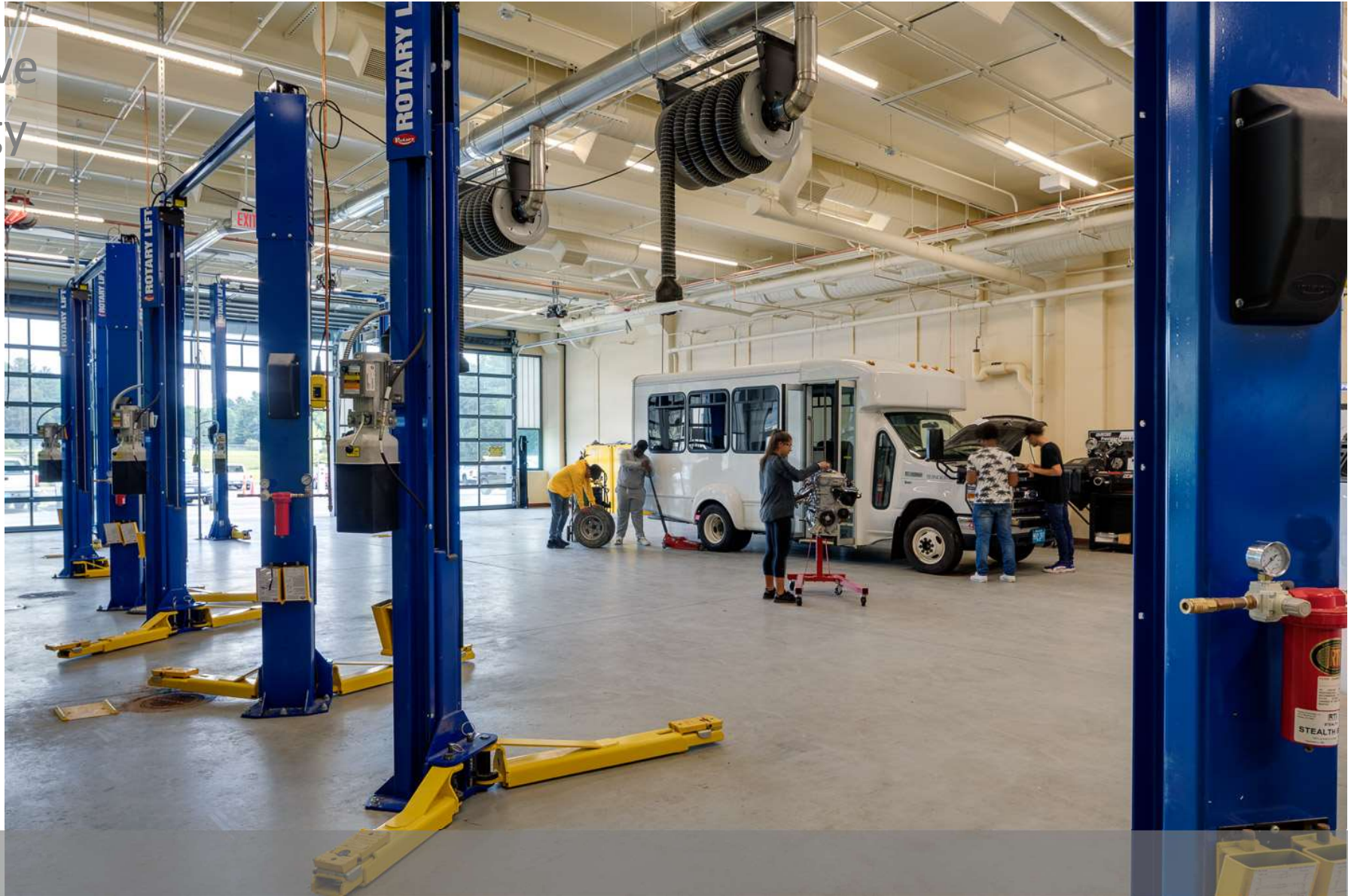


Precedents

Room Data Sheets



Automotive Technology



Precedents

Carpentry



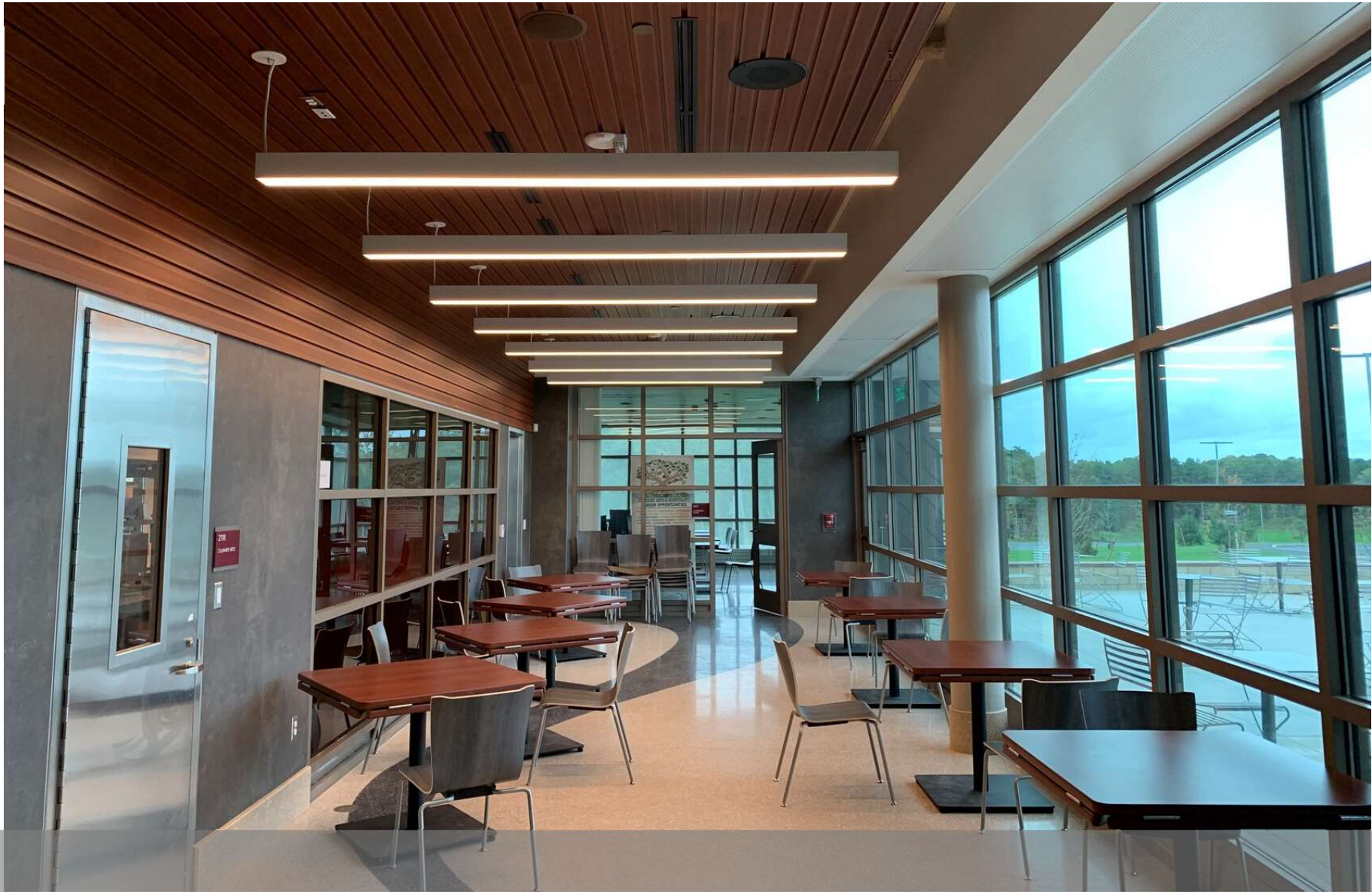
Precedents

Cosmo



Precedents

Culinary



Precedents



Terrazzo / Wood



Terrazzo



Terrazzo / Porcelain Tile



Sheet Vinyl Flooring

Proposed Finishes



Resilient Carpet



Rubber / Railing



Rubber / Wall Tile



Linoleum

Proposed Finishes

Design Development Phase



Potential Sub-Committees

- Community Outreach – all 12 Communities
- Color & Finishes Committee
- Site Landscaping & Layout
- Furniture & Equipment
- Sustainability
- *others...*

Discussion



Thank You!

NEMT