



Northeast Metro Tech Construction Project

Community Info Session | 01.12.2022



AGENDA



**The road so far/
project milestones**



**MSBA grant
reimbursement info**



**Education plan goals
& facility improvements**



Voting info



New NEMT design



**Closing remarks &
Q&A**



1

The road so far/ project milestones



The road so far/project milestones

2019	2020	2021	2022
Project manager selected	Architect selected Feasibility study launched to explore design/construction options	Feasibility study completed Final design/construction option selected (new build) Construction manager selected Schematic/preliminary design of selected option completed	Vote to approve funding of construction 01.25.22



2

Education plan goals & facility improvements



Existing facility conditions & challenges

Outdated/failing building systems

Building not fully accessible

Energy inefficiency

One access road = traffic + safety challenges

Undersized classrooms & shops

Missing/outdated building technology

Space limits = only 40% of freshmen admitted

No auditorium



Education plan goals & facility improvements

1

Increase career tech programs from 16 to 19 (add marketing, medical assisting, biotechnology)

2

Increase enrollment by 25% to 1,600 + shorten the waitlist

3

Increase safety + improve public access to shops

4

Create 21st century learning environment

6

Locate shops close to academic classrooms

6

Configure shops into career clusters

7

Create small learning communities

8

Provide flexibility for different learning styles (e.g. project-based learning)

Also impacted: community ed & state licensing programs



**Northeast Metropolitan
Community Education**
Keeps you moving in the right direction.



49 teachers

70 courses

852 students

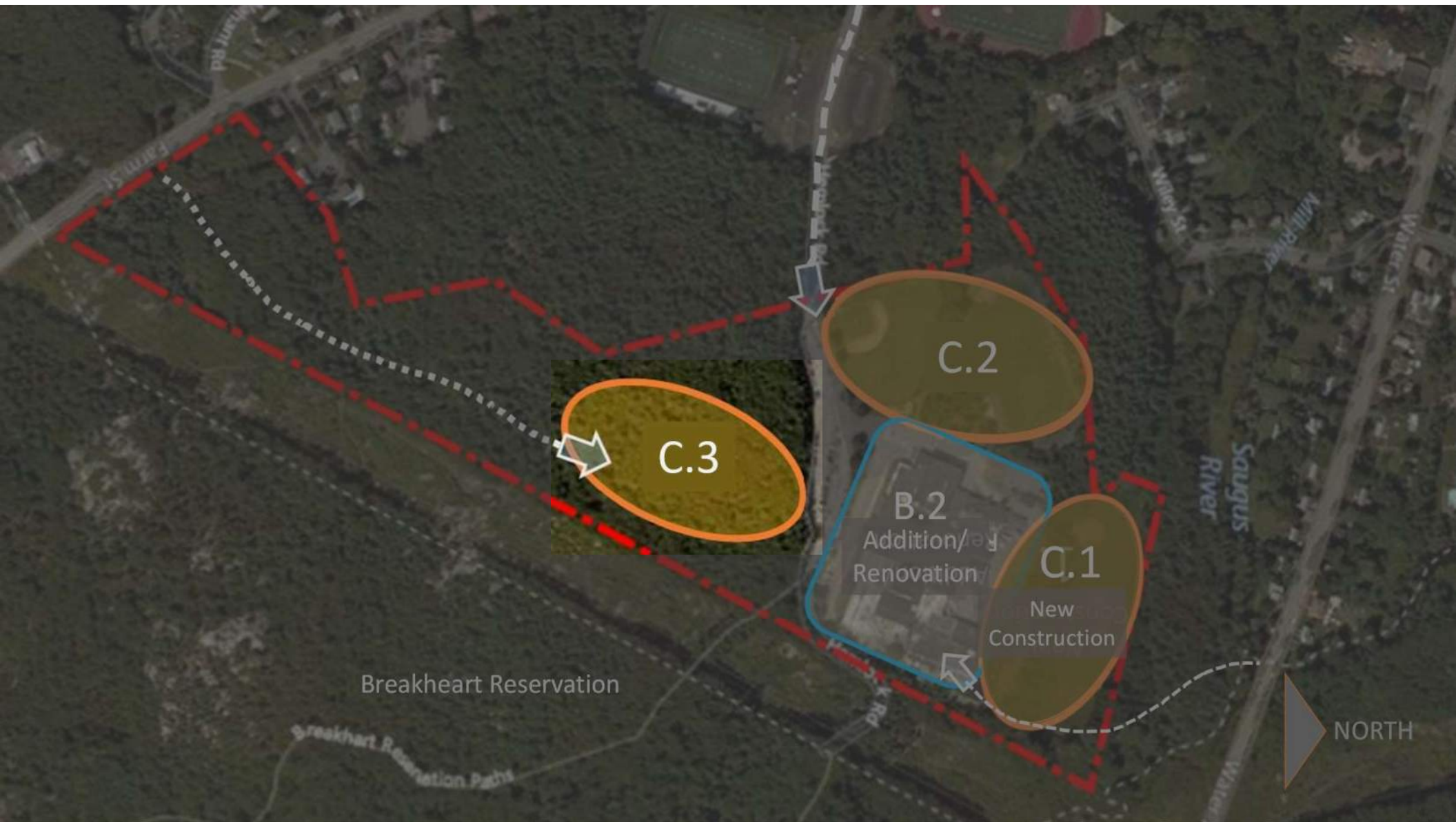
- ❖ MA continuing education
- ❖ Medical courses
- ❖ Trade preparation
- ❖ Apprentice programs
- ❖ Computer courses
- ❖ Enrichment courses
- ❖ Health & fitness courses
- ❖ Languages courses





3

New NEMT design/construction plan





Feasibility study + final selection

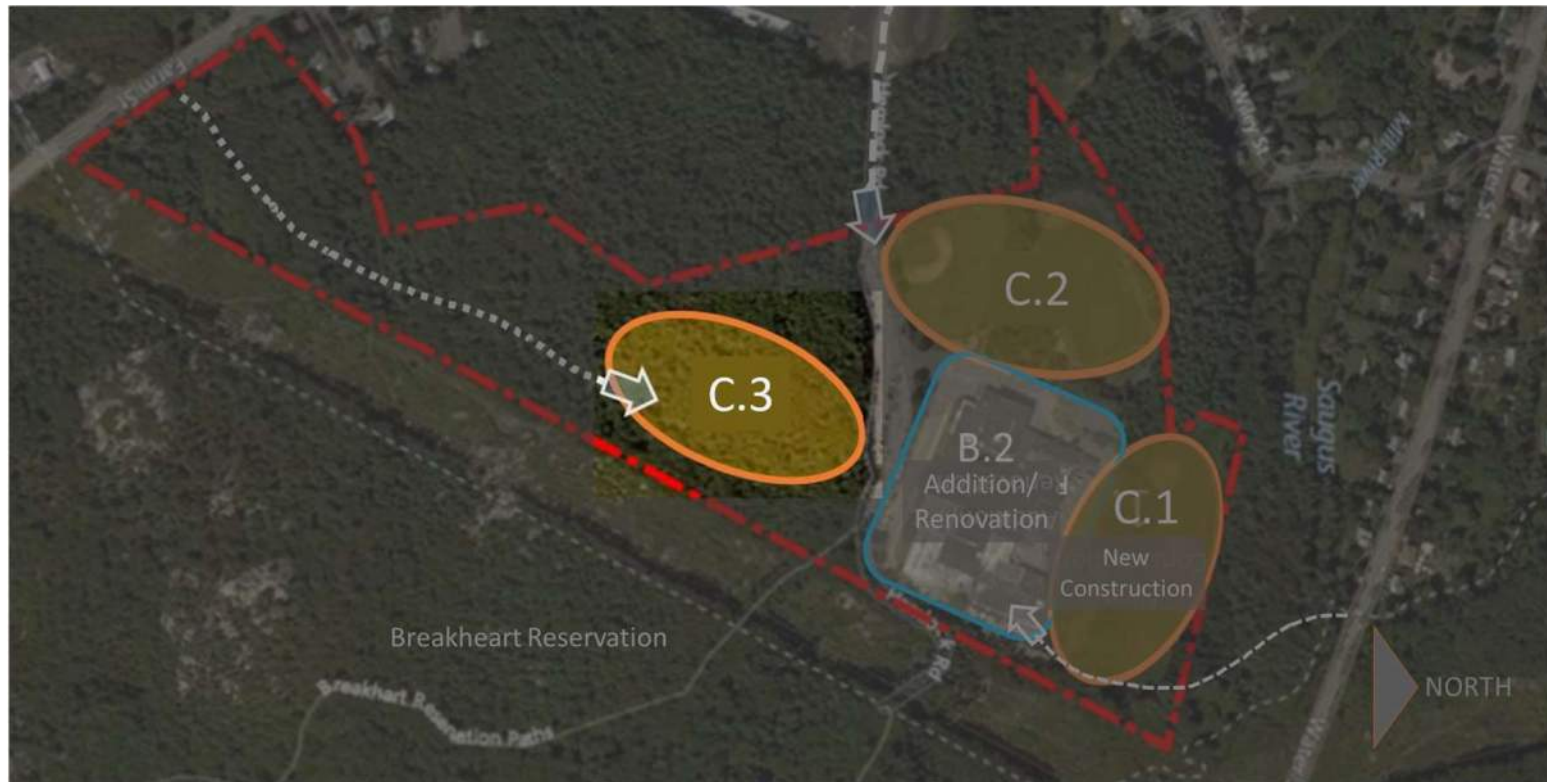
Matrix of Options										
DRAFT										
Updated: DRAFT 7.22.2020		Families of Conceptual Options								
Families of Options:			A	B		C			D	
		MSBA Required	Renovation	Add/Reno		New Construction On-Site			New Construction Off-Site	
Enrollment		Base Repair	A.1	B.1	B.2	C.1	C.2.1	C.3.1	C.2.A	?D.1?
a.	1,250 Students	doesn't address any educational deficiencies	A.1a	B.1a	B.2a	C.1a	C.2.1a	C.3.1a	C.2.Aa	D.1a
b.	1,400 Students	X	A.1b	B.1b	B.2b	C.1b	C.2.1b	C.3.1b	C.2.Ab	D.1b
c.	1,600 Students	X	A.1c	B.1c	B.2c	C.1c	C.2.1c	C.3.1c	C.2.Ac	D.1c
d.	1,660 Students	X	A.1d	B.1d	B.2d	C.1d	C.2.1d	C.3.1d	C.2.Ad	D.1d
e.	1,722 Students	X	A.1e	B.1e	B.2e	C.1e	C.2.1e	C.3.1e	C.2.Ae	D.1e

Selected option =

New construction on existing school site for 1,600 students



Feasibility study + final selection





Why was the C.3 option selected?

C.3: New construction for 1,600 students on existing school site



Best supports NEMT ed plan goals



Best separation from Breakheart Reservation traffic



Least disruption to existing school operations



Addresses long-term facility deficiencies



Most ideal to create a new access road from Farm St.



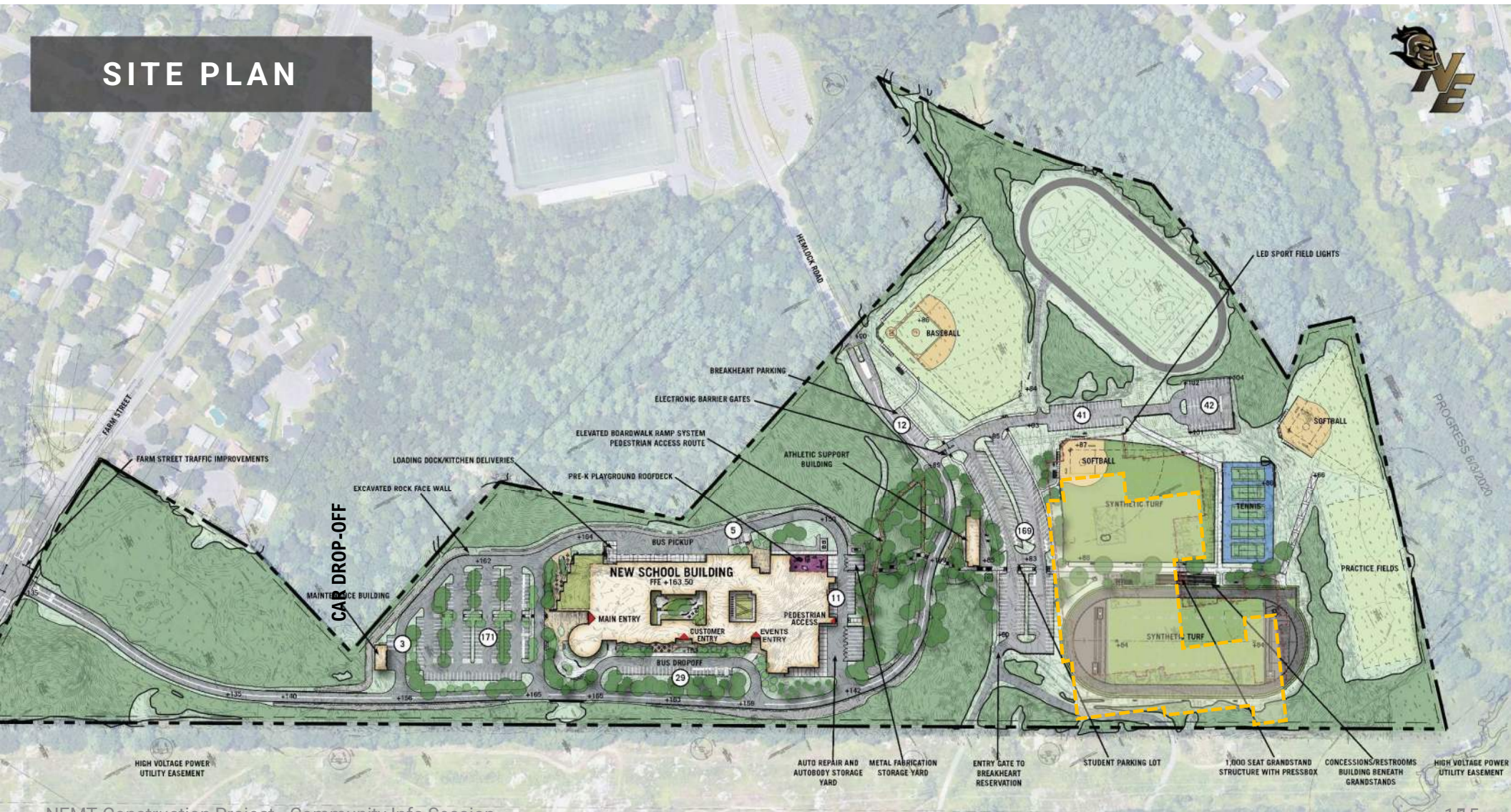
Best value of 30+ construction options studied

SITE PLAN



PROGRESS 6/3/2020

SITE PLAN



AERIAL VIEW - LOOKING SOUTH

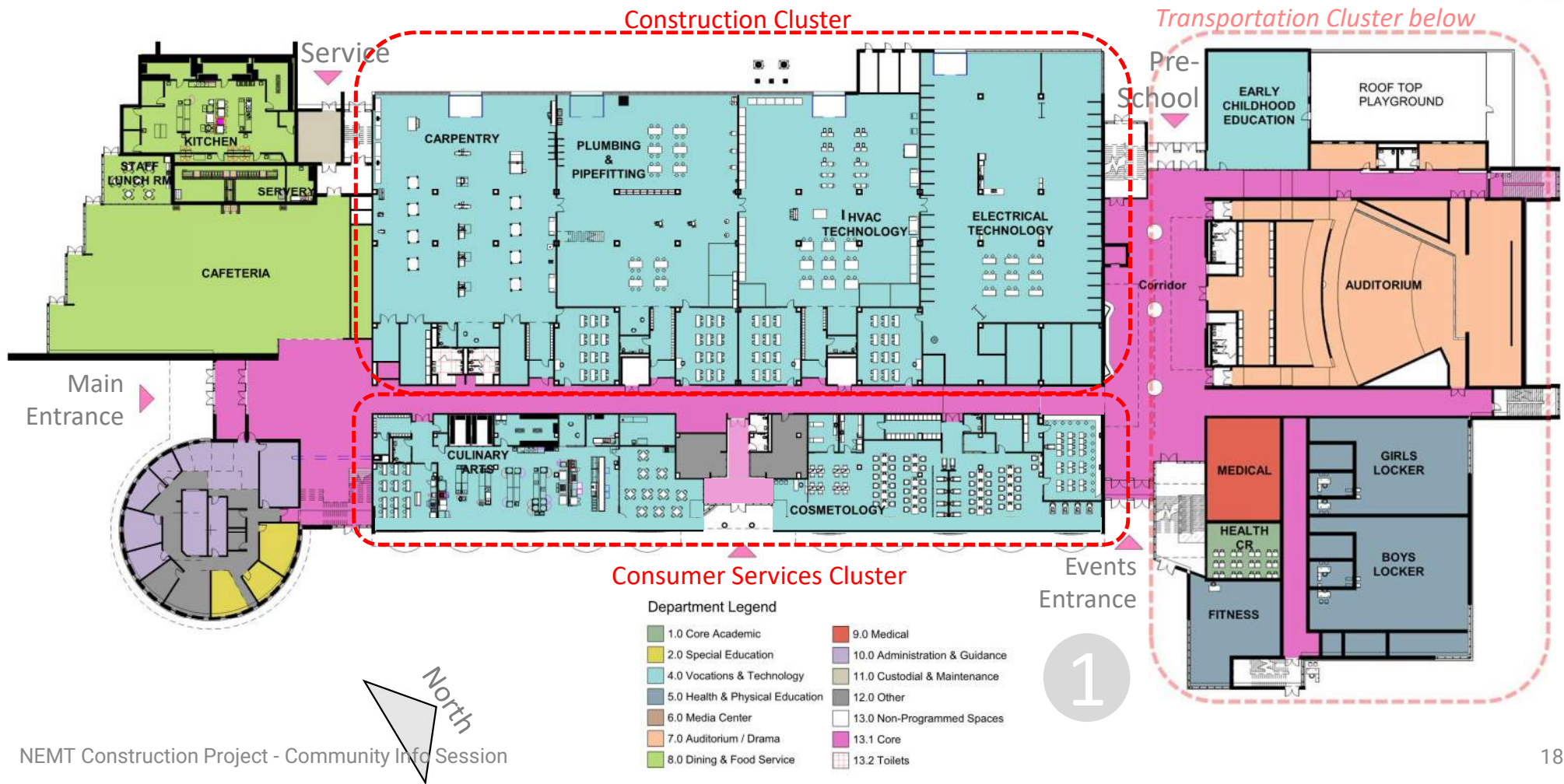


BIRD'S EYE VIEW – SOUTHEAST CORNER



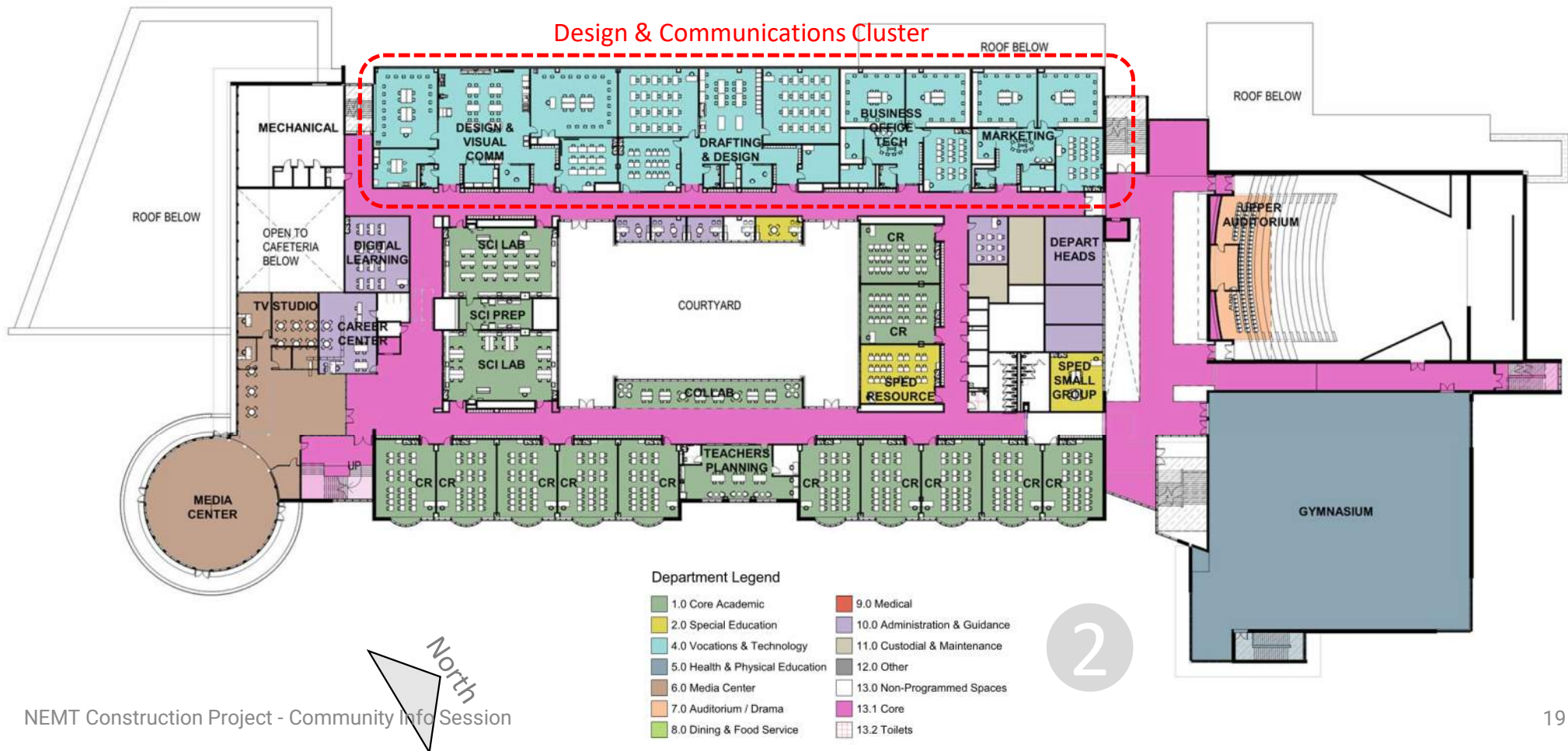


1st LEVEL – SCHEMATIC DESIGN FLOOR PLAN



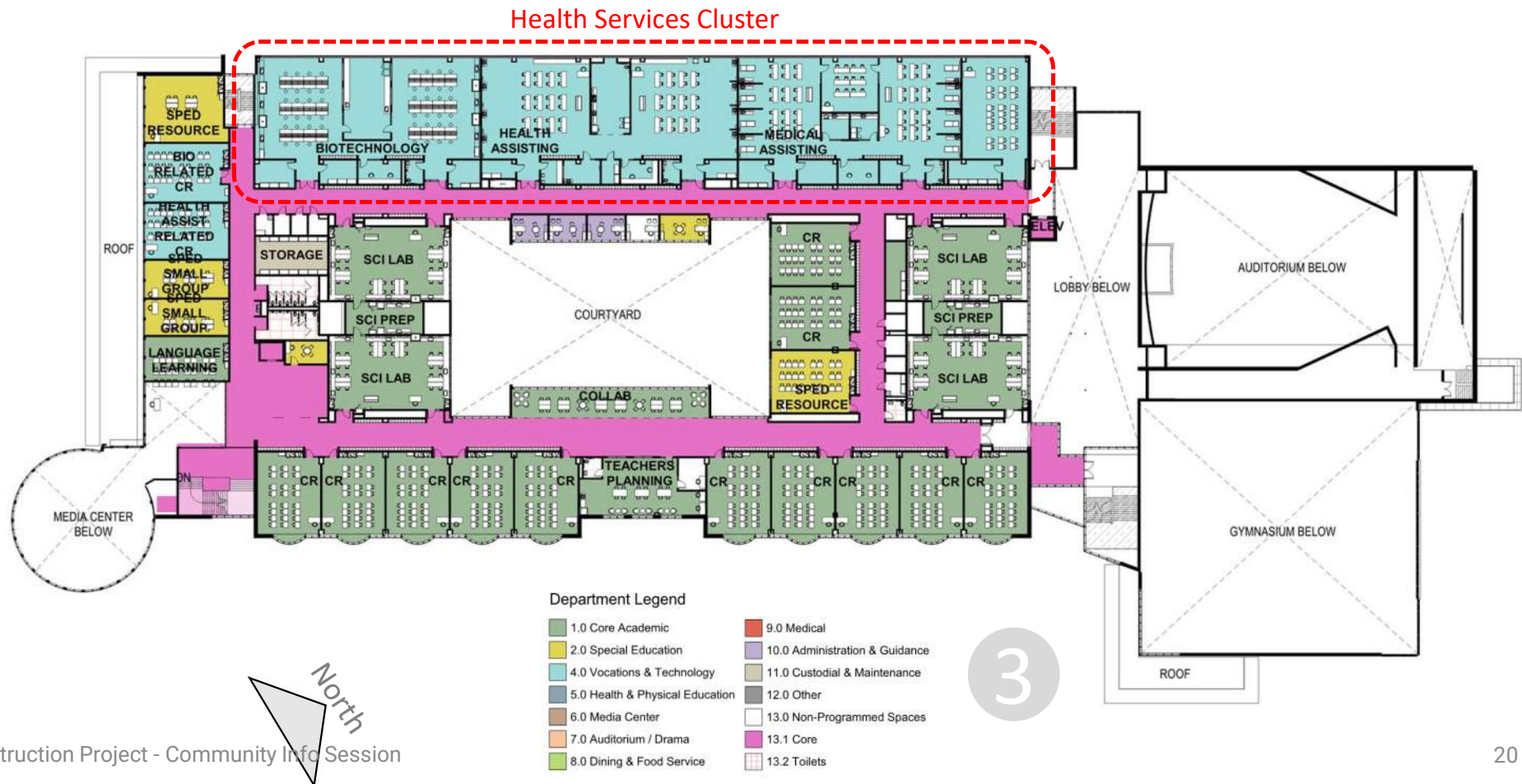


2nd LEVEL – SCHEMATIC DESIGN FLOOR PLAN





3rd LEVEL – SCHEMATIC DESIGN FLOOR PLAN

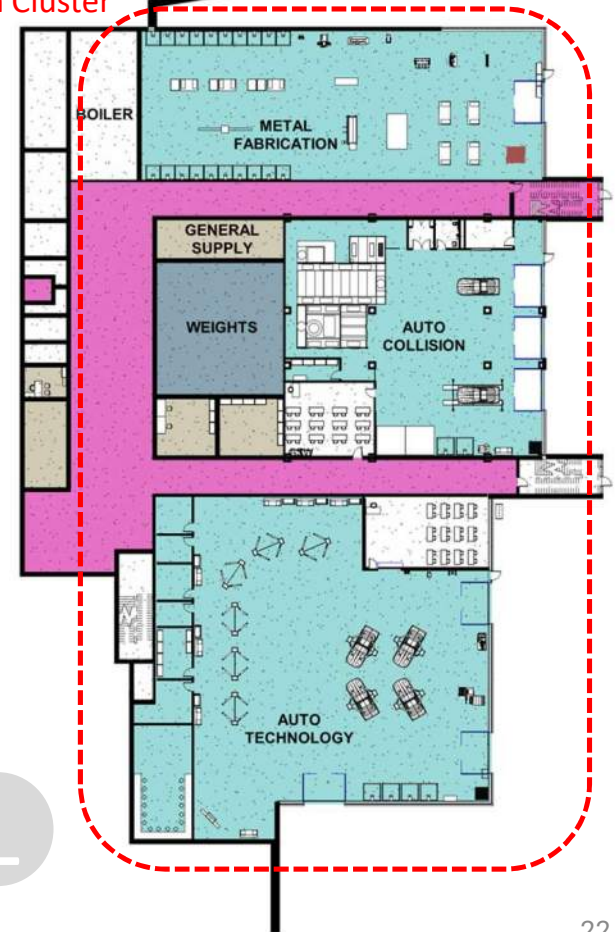




LOWER LEVEL – SCHEMATIC DESIGN FLOOR PLAN

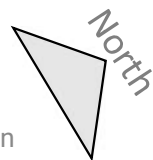


Transportation Cluster

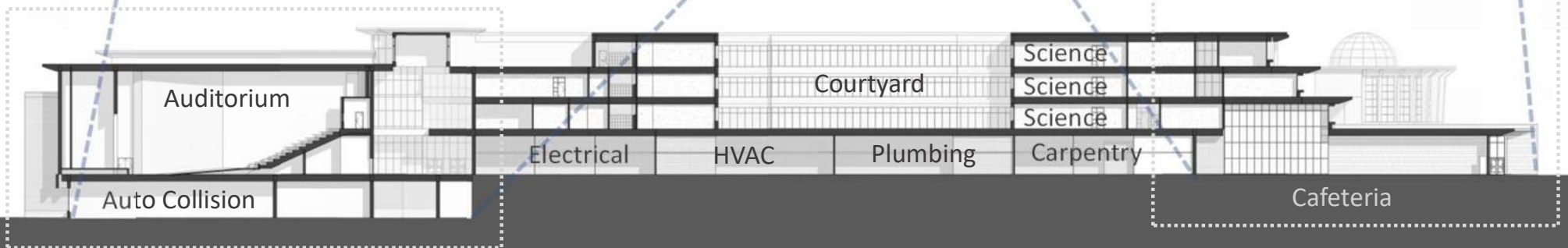
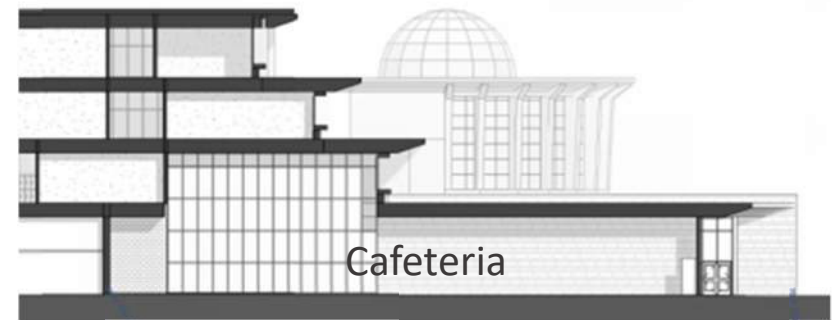
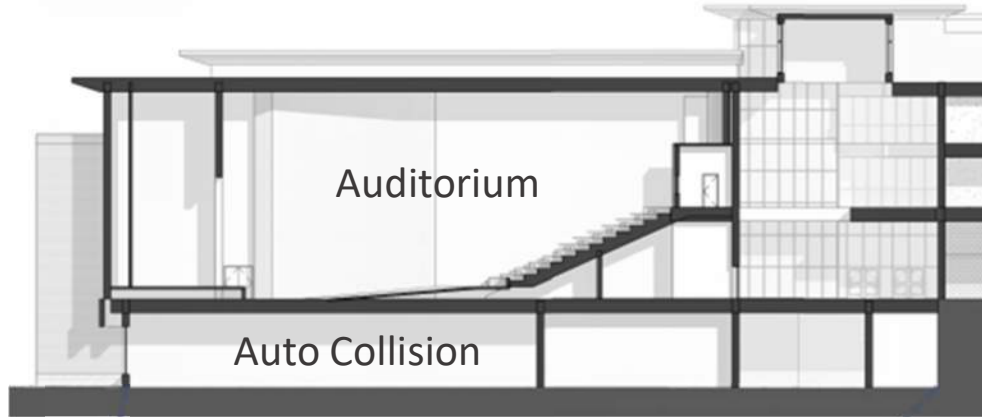


Department Legend

1.0 Core Academic	9.0 Medical
2.0 Special Education	10.0 Administration & Guidance
4.0 Vocations & Technology	11.0 Custodial & Maintenance
5.0 Health & Physical Education	12.0 Other
6.0 Media Center	13.0 Non-Programmed Spaces
7.0 Auditorium / Drama	13.1 Core
8.0 Dining & Food Service	13.2 Toilets



BUILDING SECTIONS



FRONT ENTRY



FRONT ENTRY



FRONT ENTRY



CAFETERIA PLAZA



CUSTOMER ENTRANCE



CULINARY CAFE



EVENTS ENTRANCE

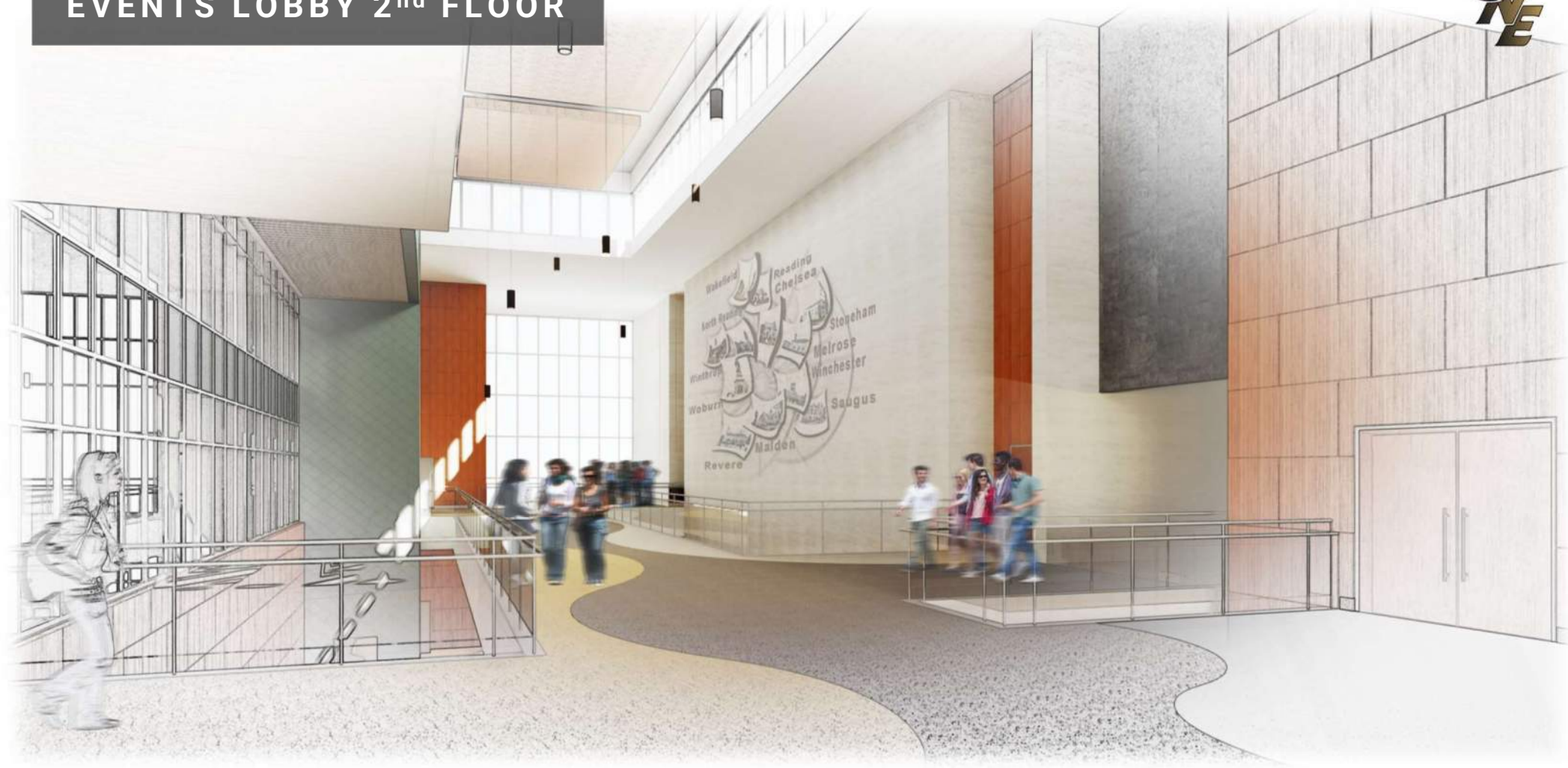


EVENTS ENTRANCE LOBBY



NEMT Construction Project - Community Info Session

EVENTS LOBBY 2nd FLOOR



AUDITORIUM



MEDIA CENTER



CAFETERIA



AUTOMOTIVE



Northeast Metro VTHS

Automotive Technology

Example

CARPENTRY

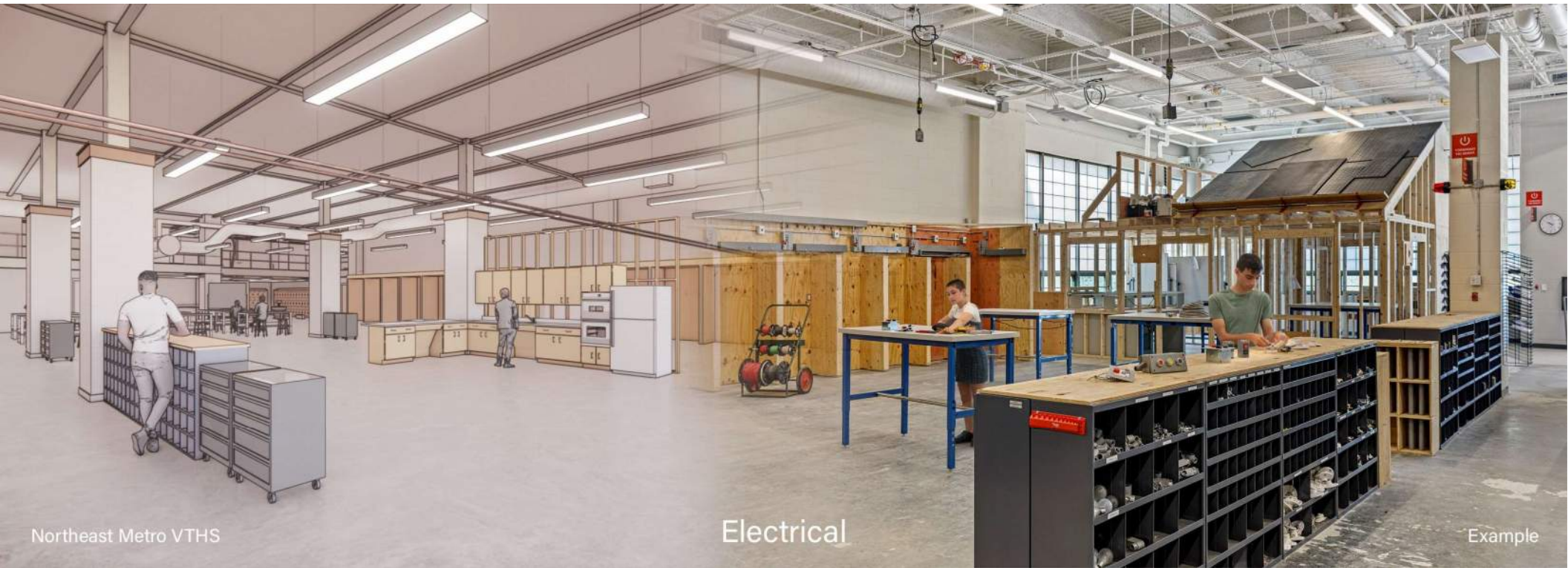


Northeast Metro VTHS

Carpentry

Example

ELECTRICAL



Northeast Metro VTHS

Electrical

Example

CULINARY

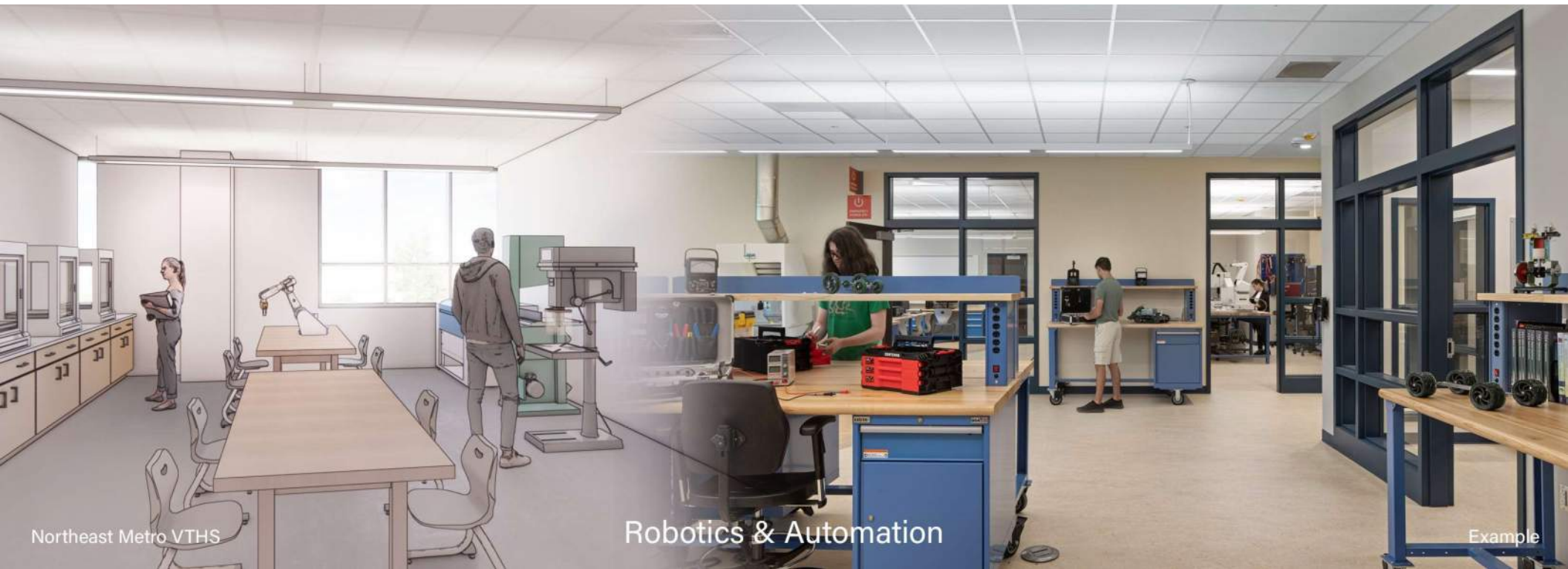


Example

Culinary

Northeast Metro VTHS

ROBOTICS



Northeast Metro VTHS

Robotics & Automation

Example

COSMETOLOGY

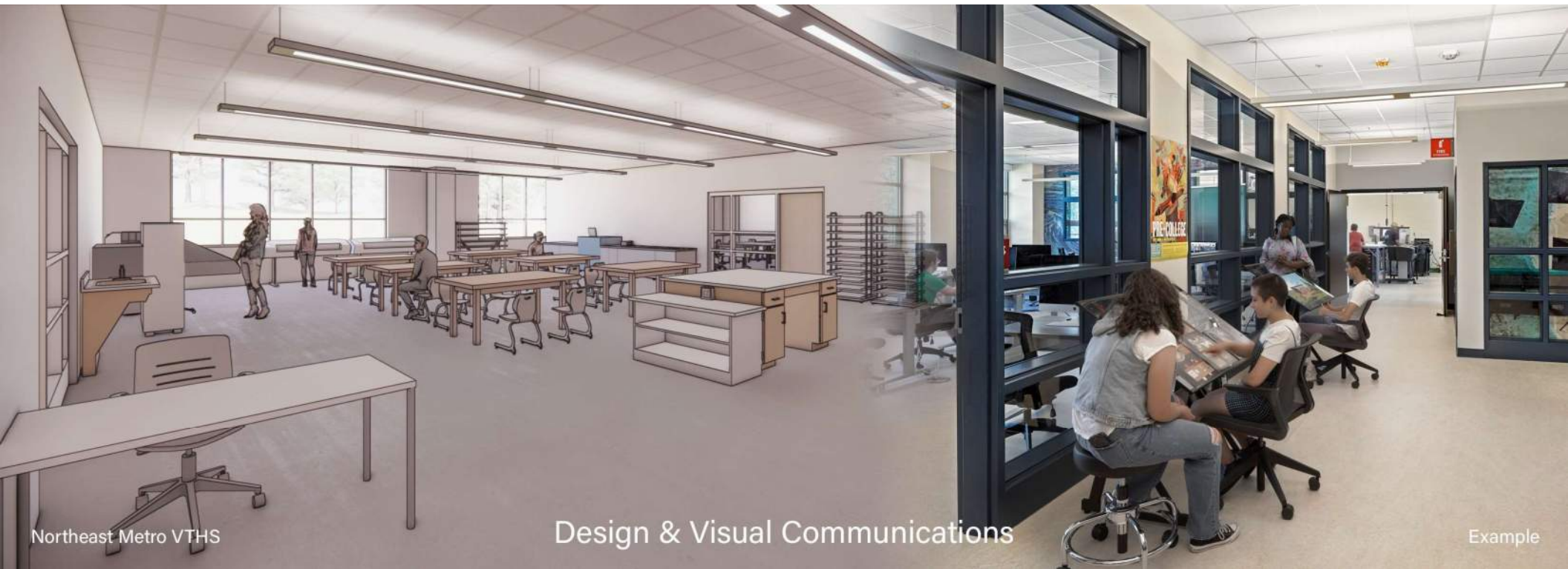


Example

Cosmetology

Northeast Metro VTTHS

DESIGN/VISUAL COMMUNICATIONS



Northeast Metro VTHS

Design & Visual Communications

Example

HEALTH ASSISTING



Example

Health Assisting

Northeast Metro VTHS

VIEW FROM EXISTING SCHOOL



NEMT Construction Project - Community Info Session



4

MSBA grant reimbursement info



Cost of Construction

1

Increase career tech programs from 16 to 19 (add marketing, medical assisting, biotechnology)

2

Increase enrollment by 25% to 1,600 + shorten the waitlist

3

Increase safety + improve public access to shops

4

Create 21st century learning environment

6

Locate shops close to academic classrooms

6

Configure shops into career clusters

7

Create small learning communities

8

Provide flexibility for different learning styles (e.g. project-based learning)

MSBA Grant



Massachusetts School Building Authority
Funding Affordable, Sustainable, and Efficient Schools in Partnership with Local Communities



**Total project cost
\$317,422,620**

**MSBA grant
reimbursement
76.84%***

*of MSBA eligible costs

**District share
\$176.6M***

*each Town/City pays same
amount per student enrolled



5

Voting info



Your vote counts! Vote date Tue 01.25.22

YES VOTE

- 1. Accepts \$140.8M in funding assistance from the MA School Building Authority**
- 2. District share is \$176.6M (each Town/City pays same amount per student enrolled)**
- 3. Adds 3 new programs and increases enrollment 25%**
- 4. Construction complete in 2026, minimal disruption to school operations**

NO VOTE

- 1. Declines \$140.8M in grants**
- 2. May cost District ~\$130M+ for immediate building code and accessibility upgrades (likely no MSBA funding assistance)**
- 3. No new programs or increased enrollment**
- 4. Construction complete ~2031, construction occurs in active school**



Polling locations

Chelsea	Chelsea City Hall	500 Broadway, Chelsea
Malden	The Senior Center Auditorium	7 Washington Street, Malden
Melrose	Middle School Gym Complex	90 Melrose Street, Melrose
North Reading	St. Theresa's Church	51 Winter Street, North Reading
Reading	Reading Memorial High School Hawkes Field House	62 Oakland Road, Reading
Revere	St. Anthony's Church (rear entrance)	250 Revere Street, Revere
Saugus	Saugus Senior Center	466 Central Street, Saugus
Stoneham	Stoneham Town Hall	35 Central Street, Stoneham
Wakefield	Galvin Middle School	525 Main Street, Wakefield
Winchester	Winchester Town Hall	71 Mt. Vernon Street, Winchester
Winthrop	Old Middle School Gym	151 Pauline Street, Winthrop
	Robert DeLeo Senior Center	35 Harvard Street, Winthrop
	O'Connell Hall	9 Golden Drive, Winthrop
Woburn	Old Wyman Elementary School	Main Street and Eaton Avenue, Woburn



Thank you!

Questions?