

DRA

Drumrey Rosane Anderson, Inc.
225 Oakland Road
Studio 205
South Windsor, CT
06074
Planning / Architecture / Interior Design
Tel: 817.964.1700
www.dra.com

250 Charles Street
Studio 300
Waltham, MA
02453
Tel: 817.964.1700
www.dra.com

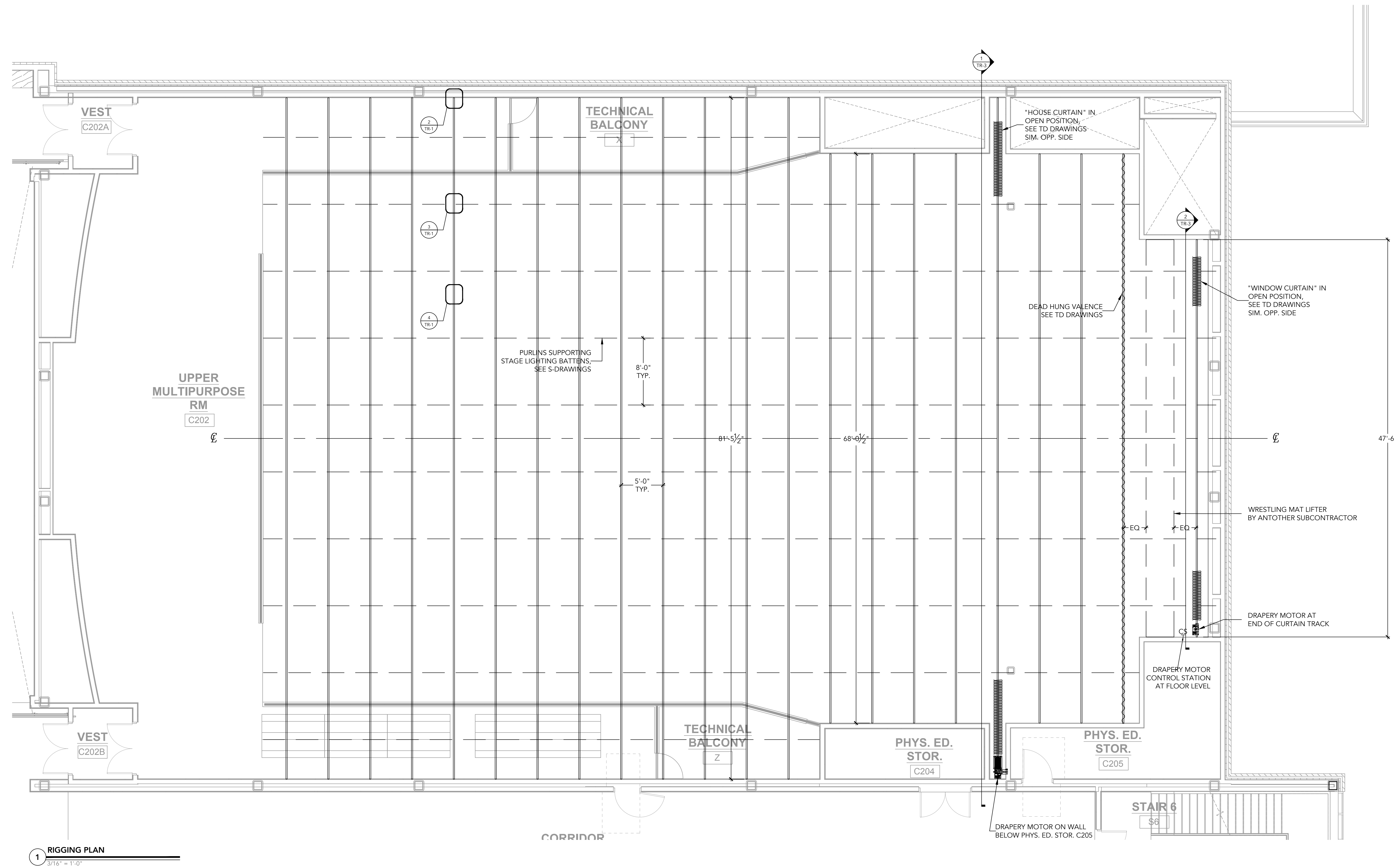
**Northeast
Metropolitan
Regional
Vocational High
School**

100 Hemlock Road,
Wakefield, MA 01880

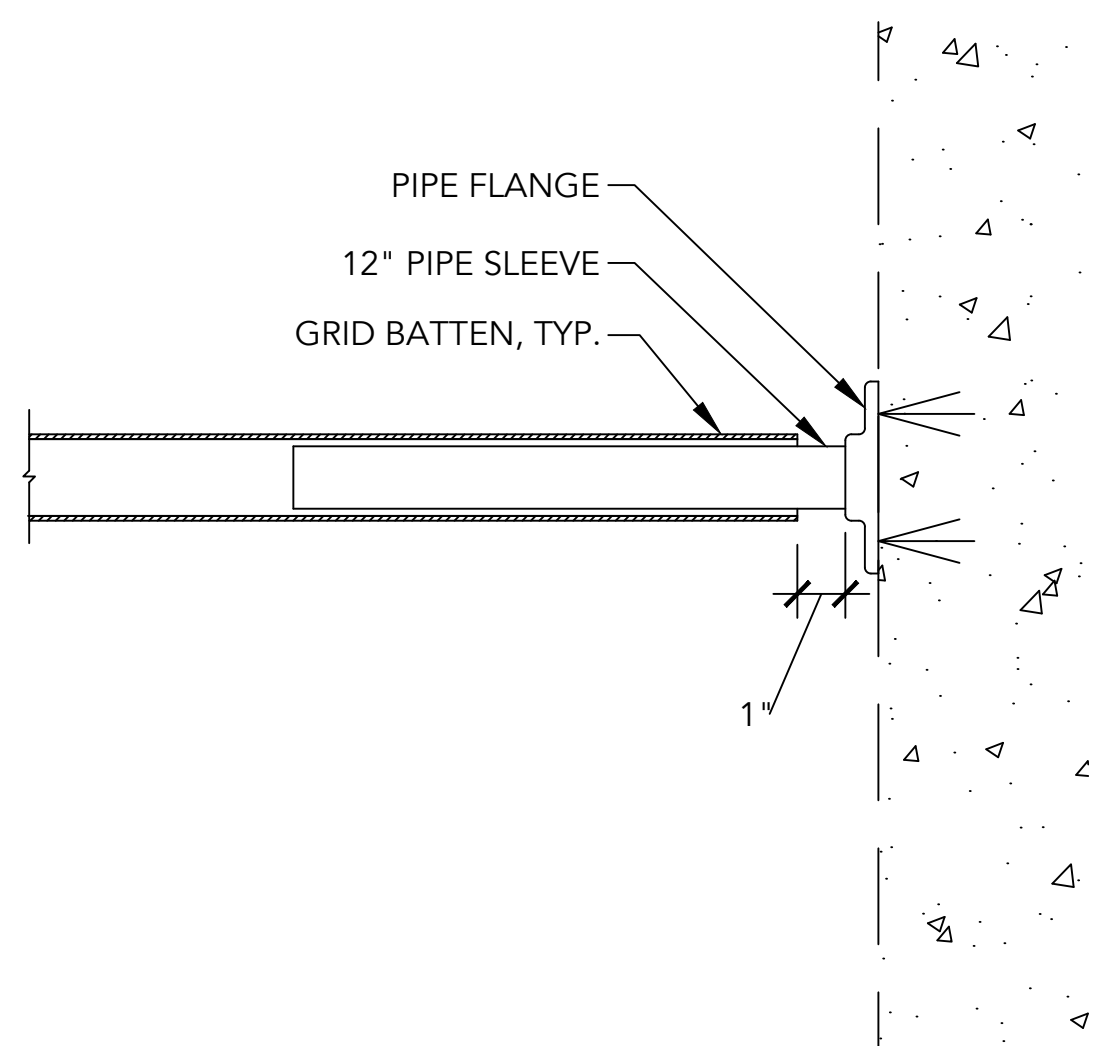
Theatre Consultant

**STUDIO
T+L**

STUDIO T+L LLC
333 4th Street
Brooklyn, NY 11215
718.788.0588
www.Studio-TL.com

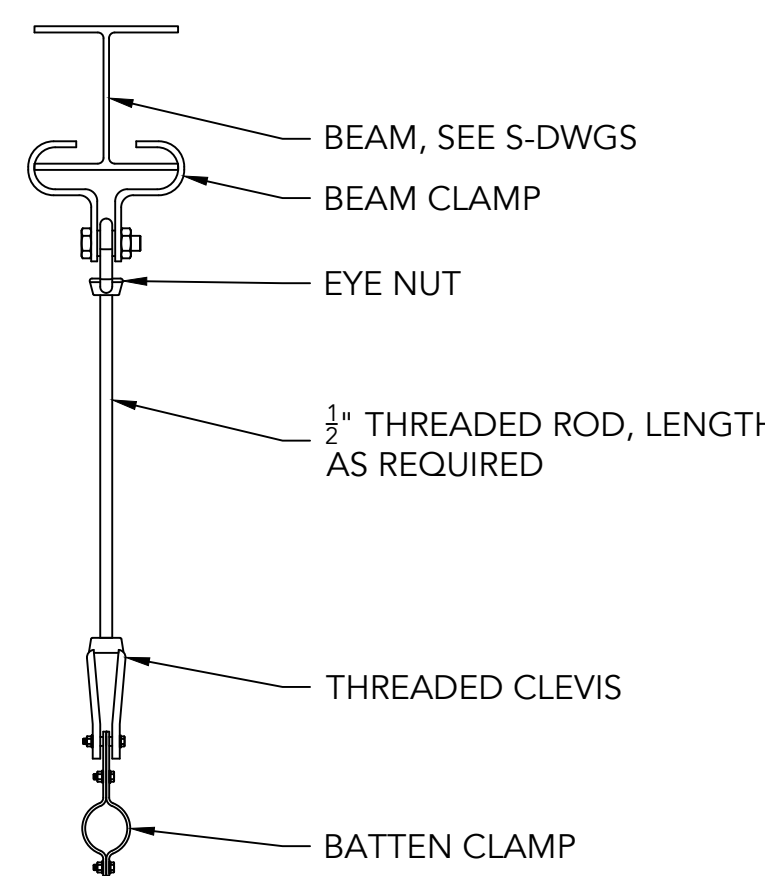


1 RIGGING PLAN
3/16\"/>

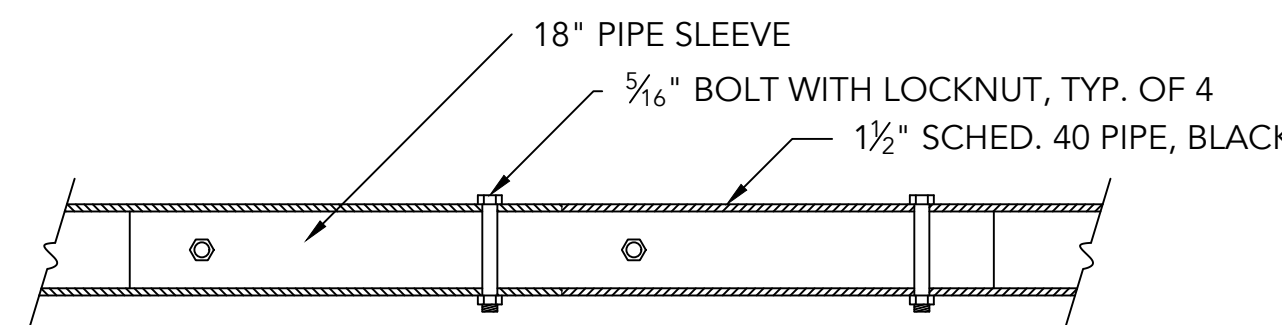


2 WALL FLANGE DETAIL
3\"/>

NOTE: PROVIDE ONE WALL FLANGE AT EACH WALL/BATTEN INTERSECTION.



3 BATTEN HANGER DETAIL
1 1/2\"/>



4 BATTEN SPLICE DETAIL
3\"/>

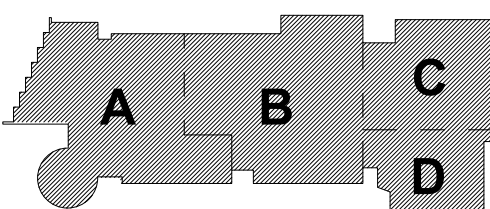
ABBREVIATIONS

CIR	CIRCUIT	CIRCUIT
COND	CONTINUOUS	COND
DMX	DMX512	DMX
DS	DOWN STAGE (TOWARD THE AUDIENCE)	DS
DSL	DOWN STAGE LEFT (WHEN FACING AUDIENCE)	DSL
DSR	DOWN STAGE RIGHT (WHEN FACING AUDIENCE)	DSR
EC	ELECTRICAL CONTRACTOR	EC
EE	ELECTRICAL ENGINEER	EE
FOH	FRONT OF HOUSE	FOH
GJB	GRID IRON JUNCTION BOX	GJB
GND	GROUND	GND
GUC	GALVANIZED UTILITY (AIRCRAFT) CABLE	GUC
HL	HOUSE LEFT (WHEN FACING STAGE)	HL
HR	HOUSE RIGHT (WHEN FACING STAGE)	HR
MFR	MANUFACTURER	MFR
RC	RIGGING CONTRACTOR	RC
SE	STRUCTURAL ENGINEER	SE
SL	STAGE LEFT (WHEN FACING AUDIENCE)	SL
SJ	STAGE LIGHTING INTEGRATOR	SJ
SR	STAGE RIGHT (WHEN FACING AUDIENCE)	SR
TBD	TO BE DETERMINED	TBD
TC	THEATRE CONSULTANT	TC
US	UP STAGE (FARTHEST FROM THE AUDIENCE)	US
URL	UP STAGE LEFT	URL
USR	UP STAGE RIGHT	USR

© COPYRIGHT 2022 DRUMREY ROSANE ANDERSON, INC.

MSBA 60% CD
SUBMISSION

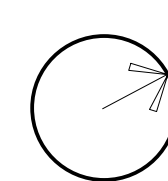
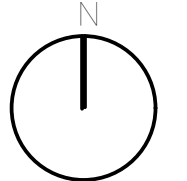
January 13th, 2023



KEY PLAN

PROJECT NORTH

MAGNETIC NORTH



**THEATRE
RIGGING
PLAN**

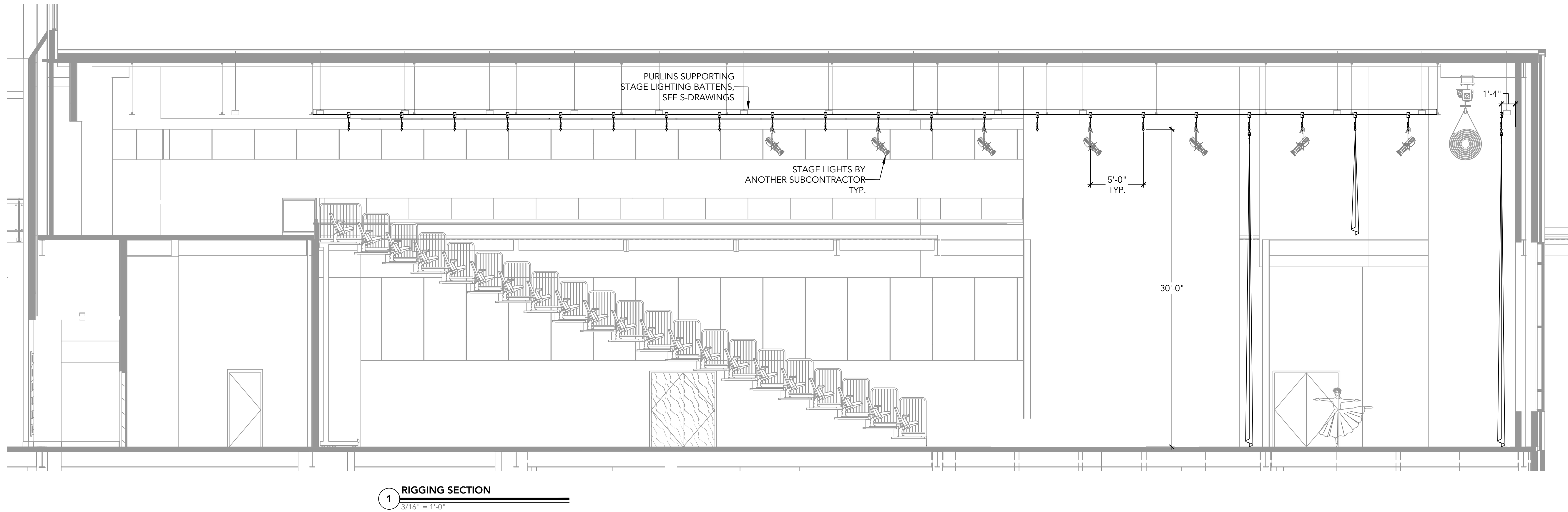
Scale: AS NOTED

Job No.: 20202

Drawn By: JL

Date: January 13th, 2023

TR-1



2 MOTORIZED CURTAIN POWER/CONTROL RISER
N.T.S.

ABBREVIATIONS

CIR	CIRCUIT
COND.	CONTINUOUS
DAMK	USITT DMX512
DS	DOWN STAGE (TOWARD THE AUDIENCE)
DSL	DOWN STAGE LEFT (WHEN FACING AUDIENCE)
DSR	DOWN STAGE RIGHT (WHEN FACING AUDIENCE)
EC	ELECTRICAL CONTRACTOR
EE	ELECTRICAL ENGINEER
FOH	FRONT OF HOUSE
GJB	GRID IRON JUNCTION BOX
GND	GROUND
GUC	GALVANIZED UTILITY (AIRCRAFT) CABLE
HL	HOUSE LEFT (WHEN FACING STAGE)
HR	HOUSE RIGHT (WHEN FACING STAGE)
MFR	MANUFACTURER
RC	RIGGING CONTRACTOR
SE	STRUCTURAL ENGINEER
SL	STAGE LEFT (WHEN FACING AUDIENCE)
SJ	STAGE LIGHTING INTEGRATOR
SR	STAGE RIGHT (WHEN FACING AUDIENCE)
TBD	TO BE DETERMINED
TC	THEATRE CONSULTANT
US	UP STAGE (FARTHEST FROM THE AUDIENCE)
URL	UP STAGE LEFT
USR	UP STAGE RIGHT

DRA

DrummeY Rosane Anderson, Inc.
225 Oakland Road
Studio 205
South Windsor, CT
06074
Planning | Architecture | Interior Design
Tel: 817.864.1700
www.draws.com

250 Charles Street
Studio 300
Waltham, MA
02453

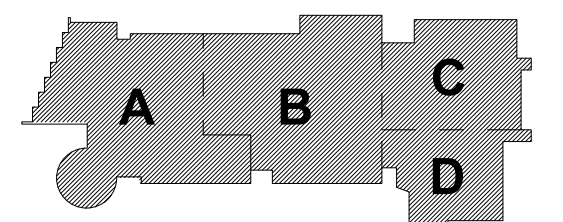
Northeast
Metropolitan
Regional
Vocational High
School
100 Hemlock Road,
Wakefield, MA 01880

Theatre Consultant
**STUDIO
T+L**
STUDIO T+L LLC
333 4th Street
Brooklyn, NY 11215
718.788.0588
www.Studio-TL.com

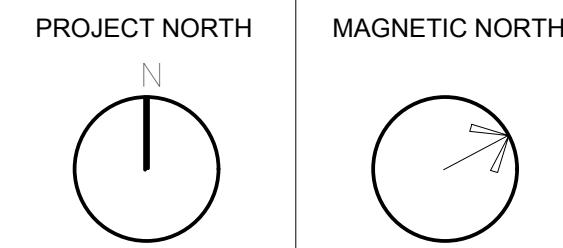
© COPYRIGHT 2022 DRUMMEY ROSANE ANDERSON, INC.

MSBA 60% CD
SUBMISSION

January 13th, 2023



KEY PLAN



**THEATRE
RIGGING
SECTION**

Scale: AS NOTED
Job No.: 20202
Drawn By: JL
Date: January 13th, 2023

TR-2

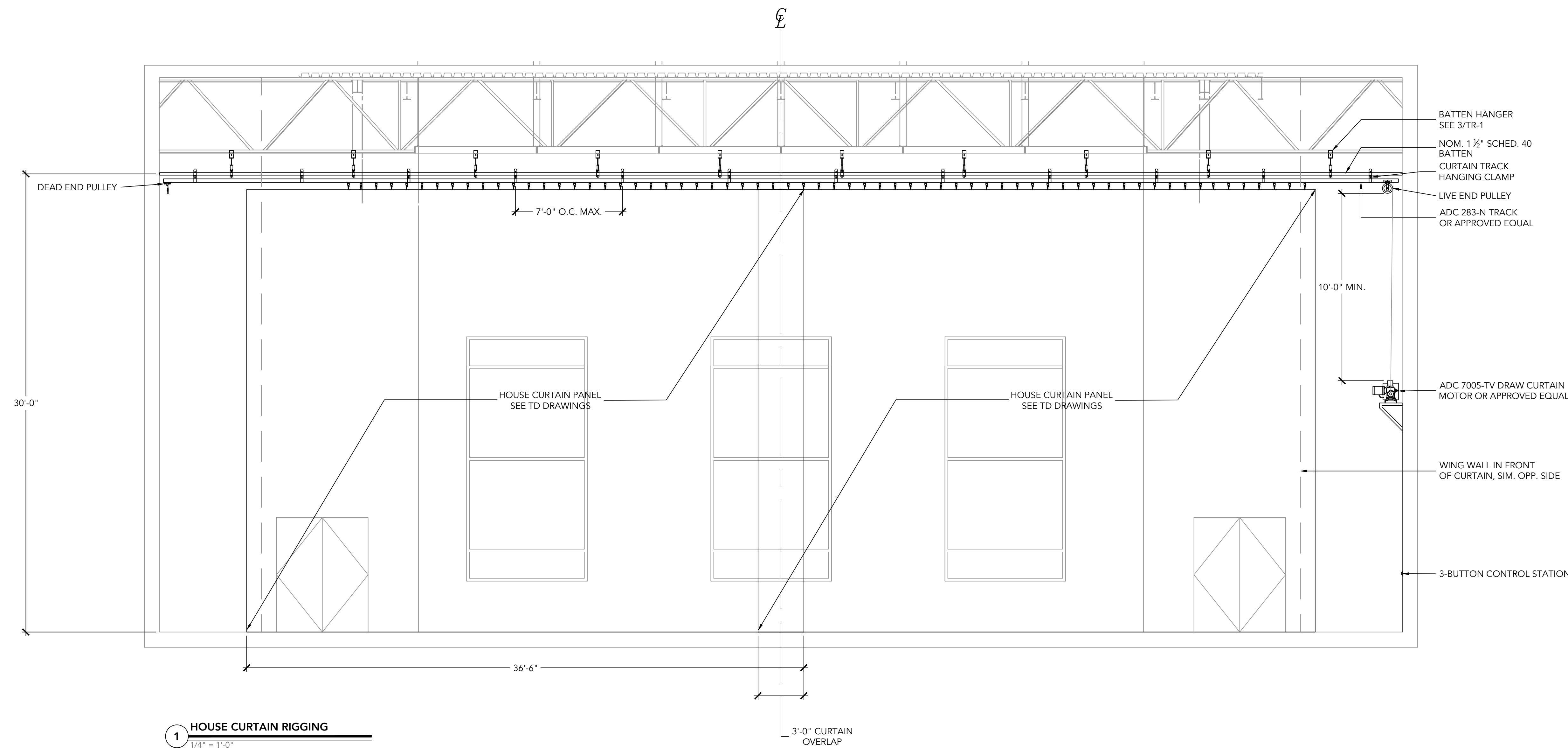
**Northeast
Metropolitan
Regional
Vocational High
School**

100 Hemlock Road,
Wakefield, MA 01880

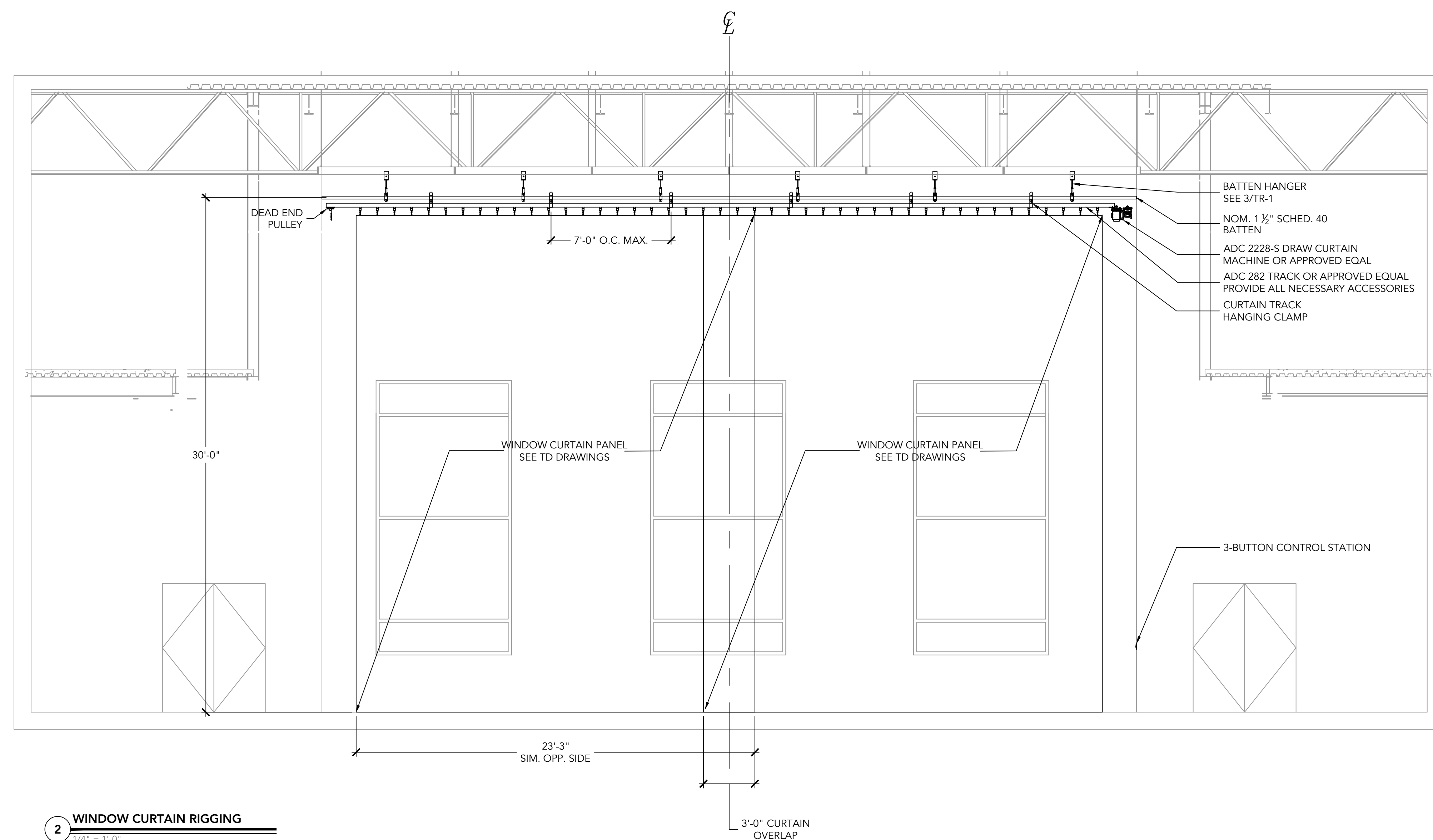
Theatre Consultant

**STUDIO
T+L**

STUDIO T+L LLC
333 4th Street
Brooklyn, NY 11215
718.788.0588
www.Studio-TL.com



1 HOUSE CURTAIN RIGGING
1/4" = 1'-0"



2 WINDOW CURTAIN RIGGING
1/4" = 1'-0"

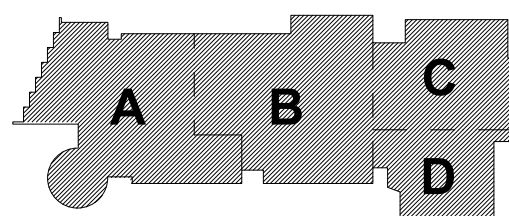
ABBREVIATIONS

CIR.	CIRCUIT
COND.	CONTINUOUS
DMX	USITT DMX512
DS	DOWN STAGE (TOWARD THE AUDIENCE)
DSL	DOWN STAGE LEFT (WHEN FACING AUDIENCE)
DSR	DOWN STAGE RIGHT (WHEN FACING AUDIENCE)
EC	ELECTRICAL CONTRACTOR
EE	ELECTRICAL ENGINEER
FOH	FRONT OF HOUSE
GJB	GRID IRON JUNCTION BOX
GND	GROUND
GUC	GALVANIZED UTILITY (AIRCRAFT) CABLE
HL	HOUSE LEFT (WHEN FACING STAGE)
HR	HOUSE RIGHT (WHEN FACING STAGE)
MFR	MANUFACTURER
RC	RIGGING CONTRACTOR
SE	STRUCTURAL ENGINEER
SL	STAGE LEFT (WHEN FACING AUDIENCE)
SU	STAGE LIGHTING INTEGRATOR
SR	STAGE RIGHT (WHEN FACING AUDIENCE)
TBD	TO BE DETERMINED
TC	THEATRE CONSULTANT
US	UP STAGE (FARTHEST FROM THE AUDIENCE)
URL	UP STAGE LEFT
USR	UP STAGE RIGHT

© COPYRIGHT 2022 DRUMREY ROSANE ANDERSON, INC.

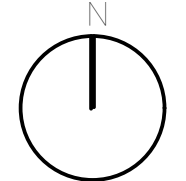
MSBA 60% CD
SUBMISSION

January 13th, 2023

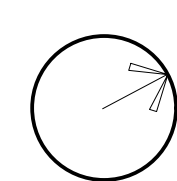


KEY PLAN

PROJECT NORTH



MAGNETIC NORTH



**HOUSE AND
WINDOW
TRAVELER
CURTAIN RIGGING**

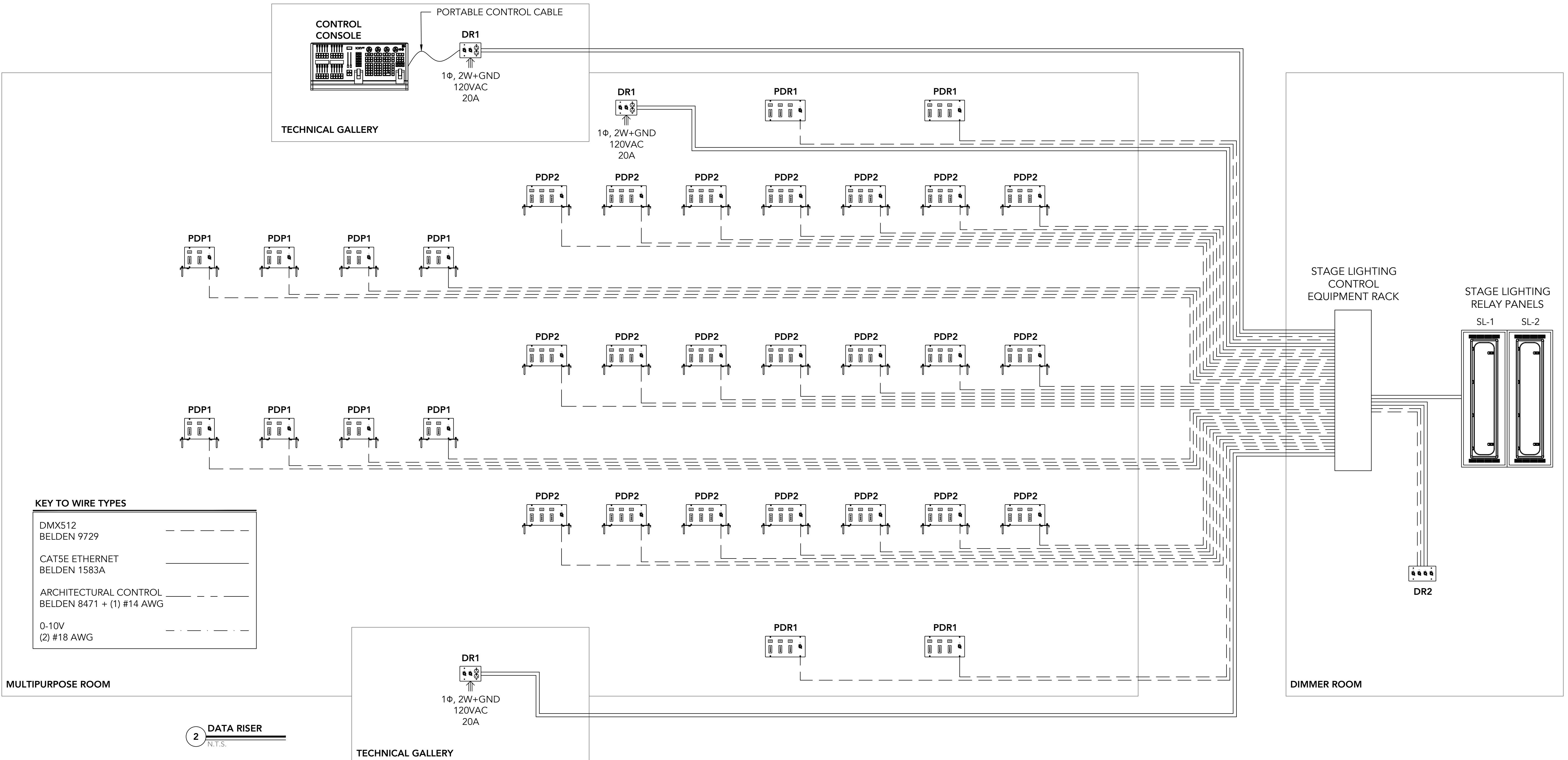
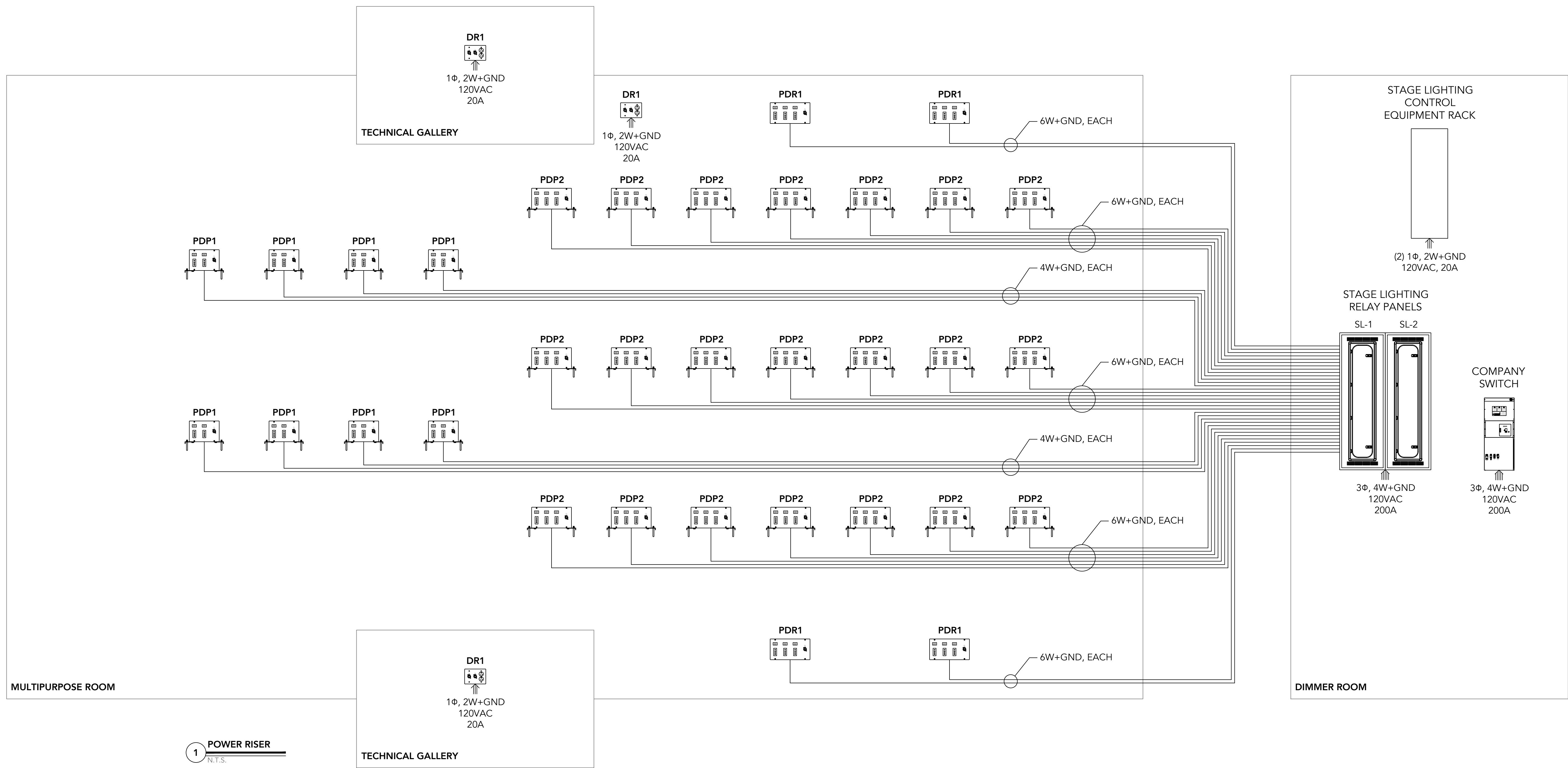
Scale: AS NOTED

Job No.: 20202

Drawn By: JL

Date: January 13th, 2023

TR-3



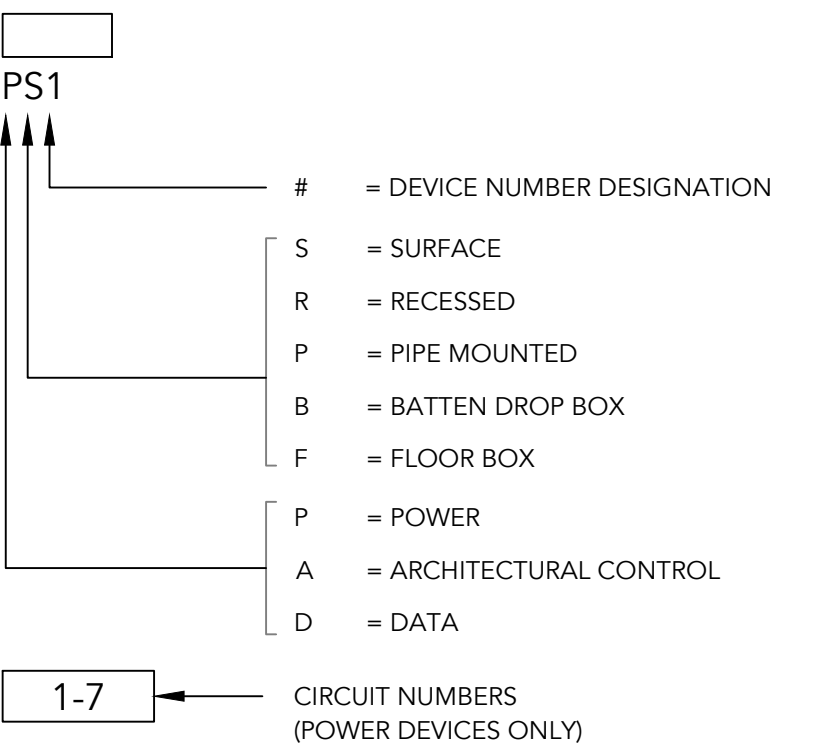
KEY TO WIRE TYPES	
DMX512 BELDEN 9729	---
CAT5E ETHERNET BELDEN 1583A	---
ARCHITECTURAL CONTROL BELDEN 8471 + (1) #14 AWG	---
0-10V (2) #18 AWG	---

TE DRAWING NOTES

1. THE ELECTRICAL CONTRACTOR (EC) SHALL CROSS REFERENCE THESE DRAWINGS AND THE ELECTRICAL DRAWINGS BEFORE ORDERING FIXTURES, OR ROUGH-IN. THE EC SHALL NOTIFY THE THEATRE CONSULTANT OF ANY DISCREPANCIES IN LOCATION OR FIXTURE TYPE. WORK ON THESE PAGES IS COORDINATED WITH THE GENERAL CONDITIONS, DIVISION 26 AND WITH SECTION 116133 STAGE RIGGING.
2. THESE DRAWINGS SHOW LAYOUTS, LOCATIONS AND TYPES OF EQUIPMENT FOR THE STAGE, HOUSE AND WORK LIGHT SYSTEM AND THE CONTROL SYSTEM. DETAILS ON WIRE AND CONDUIT SIZES ARE FOUND ON THE ELECTRICAL ENGINEERS DRAWINGS.
3. POWER WIRING AND LOW VOLTAGE CONTROL WIRING SHALL BE RUN IN SEPARATE CONDUIT. LONG PARALLEL RUNS 4' OR LONGER OF THE TWO CONDUITS SIDE BY SIDE SHALL NOT BE PERMITTED.
4. EACH CIRCUIT REPRESENTS A 20A, 120VAC CIRCUIT AND HOME RUN TO THE DIMMING RACK.
5. EACH CIRCUIT SHALL HAVE TWO WIRES AND SHALL BE GROUNDED. COMMON NEUTRALS SHALL NOT BE PERMITTED.
6. EACH CIRCUIT IS WIRED DIRECTLY TO THE DIMMER RACK AND IS PROTECTED BY THE DIMMER'S INTEGRAL CIRCUIT BREAKER. ADDITIONAL PROTECTION IS NOT REQUIRED.
7. THE DIMMING EQUIPMENT, WIRING DEVICES AND CONTROL DEVICES SHALL BE SET INTO PLACE BY THE EC. IT SHALL BE THE WORK OF THE EC TO RUN ALL CONDUIT AND WIRING FOR LINE VOLTAGE AND LOW VOLTAGE CIRCUITS.

KEY TO SYMBOLS

STANDARD WIRING DEVICE



STANDARD CONNECTORS

(NOT TO SCALE)

- 20A 2P&G "STAGE PIN"
- 50A 2P&G "STAGE PIN"
- 6 CIRCUIT 20A VEAM
- NEMA 15-20 "TWIST LOCK"
- POWERCON TRUE1 TOP
- 15/20A CONVENIENCE OUTLET
- XLRS "DMX"
- RJ45 "NET"

ABBREVIATIONS

- | | |
|-------|---|
| CR | CIRCUIT |
| COND. | CONDUCTORS |
| CONT. | CONTINUOUS |
| DMX | DMX512 |
| DS | DOWN STAGE (TOWARD THE AUDIENCE) |
| DSL | DOWN STAGE LEFT (WHEN FACING AUDIENCE) |
| DSR | DOWN STAGE RIGHT (WHEN FACING AUDIENCE) |
| EC | ELECTRICAL CONTRACTOR |
| EE | ELECTRICAL ENGINEER |
| FOH | FRONT OF HOUSE |
| GJB | GRID IRON JUNCTION BOX |
| GND | GROUND |
| HL | HOUSE LEFT (WHEN FACING STAGE) |
| HR | HOUSE RIGHT (WHEN FACING STAGE) |
| LSI | LIGHTING SYSTEM INTEGRATOR |
| MFR | MANUFACTURER |
| RFU | REMOTE FOCUS UNIT |
| RTC | RIGGING TRADE CONTRACTOR |
| SL | STAGE LEFT (WHEN FACING AUDIENCE) |
| SR | STAGE RIGHT (WHEN FACING AUDIENCE) |
| TBD | TO BE DETERMINED |
| TC | THEATRE CONSULTANT |
| US | UP STAGE (FARTHEST FROM THE AUDIENCE) |
| URL | UP STAGE LEFT |
| USR | UP STAGE RIGHT |
| W | WIRE |

DMX512 CABLING

1. THE ELECTRICAL CONTRACTOR (EC) SHALL BECOME FAMILIAR WITH THE INSTALLATION REQUIREMENTS FOR ANSI/ESTA DMX512 SYSTEMS PRIOR TO BEGINNING INSTALLATION. IT IS RECOMMENDED THAT THE EC REVIEW *RECOMMENDED PRACTICE FOR DMX512 A GUIDE FOR USERS AND INSTALLERS* BY ADAM BENNETTE, WHICH COVERS BOTH ANSI/ESTA 1.11 DMX512 AND ANSI/ESTA 1.20 ROW SYSTEMS. THE BOOKLET IS A FREE DOWNLOAD AT [HTTP://TSP-ESTA.ORG/FREESTANDARDS](http://tsp-esta.org/freestandards) AT THE BOTTOM OF THE PAGE.
2. DO NOT PURCHASE OR INSTALL CABLE THAT IS NOT:
 - 2.1. LISTED AS APPROVED IN THE STAGE LIGHTING CONTROL SYSTEM SHOP DRAWINGS, OR
 - 2.2. APPROVED BY THE STAGE LIGHTING SYSTEM INTEGRATOR PRIOR TO SHOP DRAWING APPROVAL
3. ALL PERMANENT DMX CABLES SHALL BE INSTALLED IN CONDUIT.
4. FOLLOW MANUFACTURER'S INSTALLATION INSTRUCTIONS INCLUDED WITH THE SHOP DRAWINGS. PAY PARTICULAR ATTENTION TO CABLE/PIN CONNECTIONS TO AVOID CROSS-WIRING.
5. DMX CABLE RUNS CONTROLLING PERMANENTLY INSTALLED DEVICES SHALL HAVE NO MORE THAN 30 DEVICES PER RUN. THE EC SHALL PLAN ALL DMX CABLE RUNS ACCORDINGLY.
6. TOUCH-AND-GO CONNECTIONS AND "Y" CABLES ARE NOT PERMITTED. DMX SIGNAL MUST BE PASSED ALONG VIA THE DEVICE'S INTEGRAL INPUT/OUTPUT CONNECTORS.
7. ALL DMX CABLE RUNS THAT END IN AN OPERATING DEVICE SHALL BE TERMINATED BY A 110-130 OHM 1/2 WATT RESISTOR BETWEEN THE DATA LINES AND INSTALLED IN A SUITABLE ENCLOSURE. THE EC AND STAGE LIGHTING SYSTEM INTEGRATOR SHALL COORDINATE THE NUMBER OF TERMINATORS REQUIRED. CABLE RUNS THAT END IN A DMX INPUT OR OUTPUT 5-PIN XLR JACK THAT IS NOT PART OF AN OPERATING DEVICE (SUCH AS A DATA DISTRIBUTION FACEPLATE) DO NOT REQUIRE TERMINATION.
8. TERMINATE ALL DMX CABLE RUNS BY:
 - 8.1. SWITCHING ON THE LAST DEVICE'S INTEGRAL TERMINATOR.
 - 8.2. ATTACHING A 5-PIN XLR OR RJ45 (DEPENDING ON THE DEVICE) TERMINATOR TO THE LAST DEVICE'S DMX OUT PORT. THESE TERMINATORS ARE AVAILABLE FROM THE STAGE LIGHTING SYSTEM INTEGRATOR.
9. THE EC SHALL SET THE START DMX ADDRESS ON ALL LIGHT FIXTURES, POWER SUPPLIES, AND OTHER DATA RECEIVING DEVICES ACCORDING TO THE LIGHTING CONTROL SHOP DRAWINGS AND/OR THE LP DRAWINGS AT THE TIME OF FIXTURE INSTALLATION. FOLLOW MANUFACTURER'S INSTRUCTIONS SO THAT THE ADDRESS IS HELD IN MEMORY UNTIL THE LIGHTING CONTROL SYSTEM IS COMMISSIONED.

THE WORK ON THIS SHEET IS ASSOCIATED WITH SECTIONS 116153, 260963, AND 265113 UNLESS NOTED



Drummeys Rosane Anderson, Inc.
225 Oakland Road
Studio 205
South Windsor, CT
06074
Planning / Architecture / Interior Design
Tel: 817.864.1700
www.dra.com

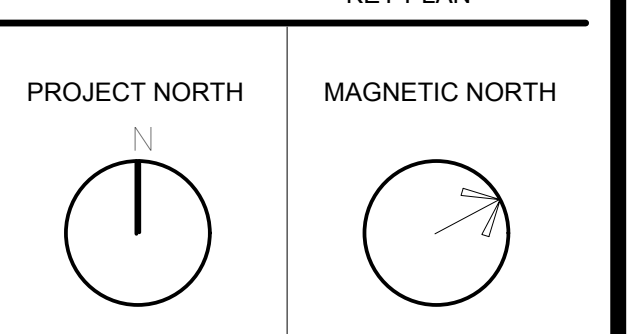
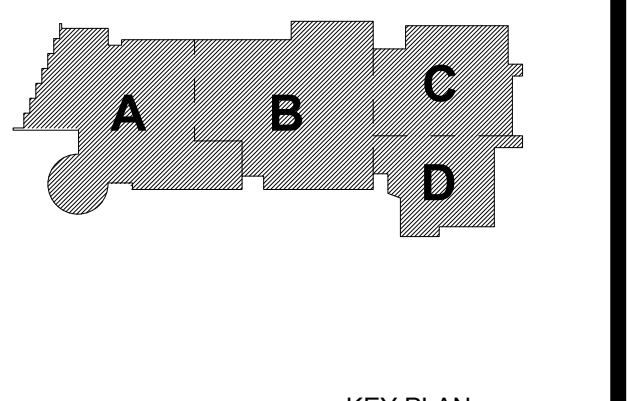
**Northeast
Metropolitan
Regional
Vocational High
School**
100 Hemlock Road,
Wakefield, MA 01880

Theatre Consultant
**STUDIO
T+L**
STUDIO T+L LLC
333 4th Street
Brooklyn, NY 11215
718.788.0588
www.Studio-TL.com

© COPYRIGHT 2022 DRUMMEYS ROSANE ANDERSON, INC.

MSBA 60% CD
SUBMISSION

January 13th, 2023



**THEATRE
ELECTICS
POWER + DATA
RISERS**

Scale: AS NOTED
Job No.: 20202
Drawn By: JL
Date: January 13th, 2023
TE-1

DRA

Drumhey Rosane Anderson, Inc.

225 Oakland Road
Studio 205
South Windsor, CT
06074

250 Charles Street
Studio 300
Waltham, MA
02453

Planning / Architecture / Interior Design
Tel: 817.864.1700
www.draws.com

Northeast
Metropolitan
Regional
Vocational High
School

100 Hemlock Road,
Wakefield, MA 01880

Theatre Consultant

STUDIO
T+L

STUDIO T+L LLC
333 4th Street
Brooklyn, NY 11215
718.788.0588
www.Studio-TL.com

MSBA 60% CD
SUBMISSION

January 13th, 2023

A

B

C

D

KEY PLAN

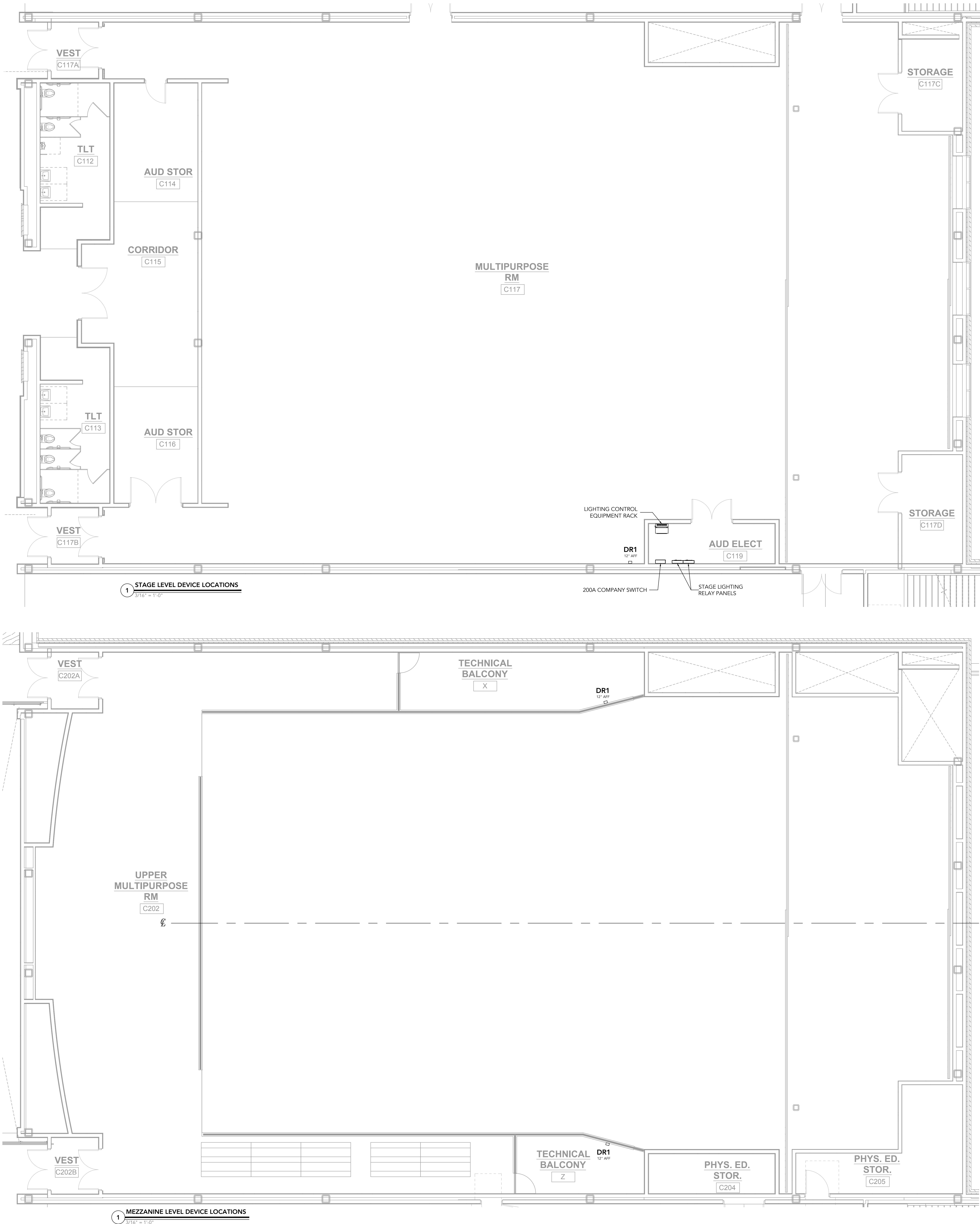
PROJECT NORTH

MAGNETIC NORTH

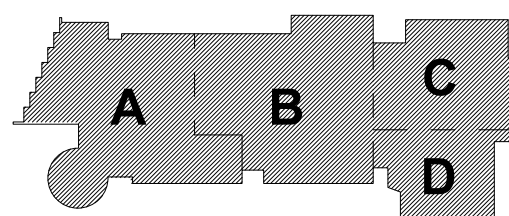
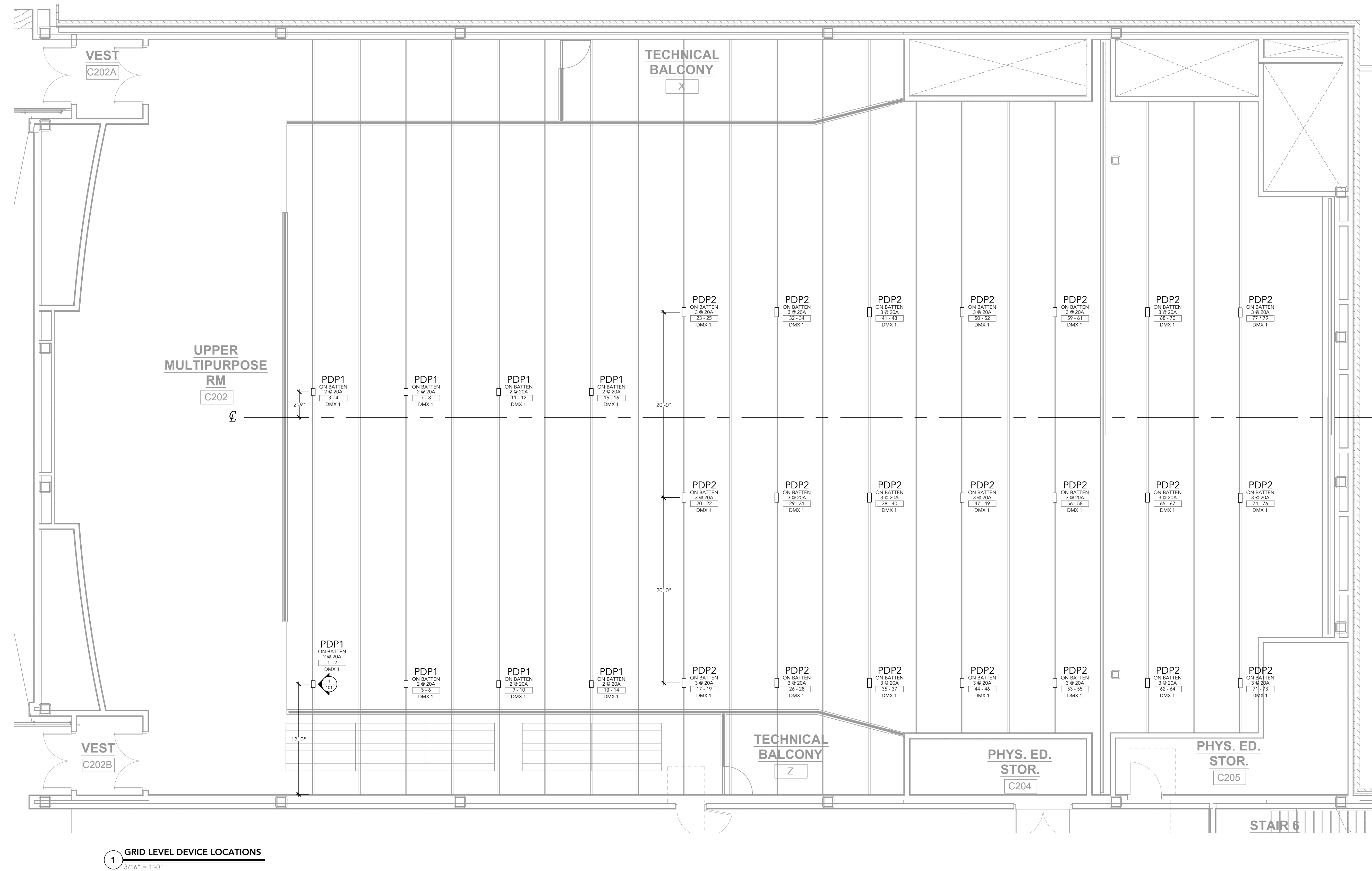
THEATRE
ELECTICS
DEVICE
LOCATIONS

Scale: AS NOTED
Job No.: 20202
Drawn By: JL
Date: January 13th, 2023

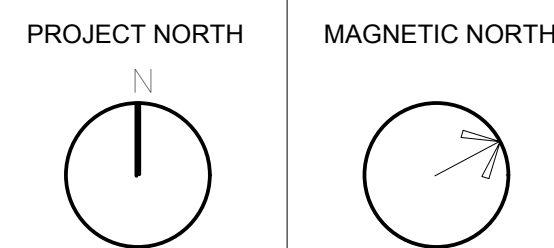
TE-2.0



THE WORK ON THIS SHEET IS ASSOCIATED WITH SECTIONS 116153, 260763, AND 265113 UNLESS NOTED



KEY PLAN



**THEATRE
ELECTICS
DEVICE
LOCATIONS**

Scale: AS NOTED
Job No.: 20202
Drawn By: JL
Date: January 13th, 2023

TE-2.1



Drumrey Rosane Anderson, Inc.
225 Oakland Road
Studio 205
South Windsor, CT 06074
Tel: 617.864.1700
www.dra-inc.com

260 Charles Street
Studio 300
Waltham, MA 02453
Tel: 617.864.1700
www.dra-inc.com

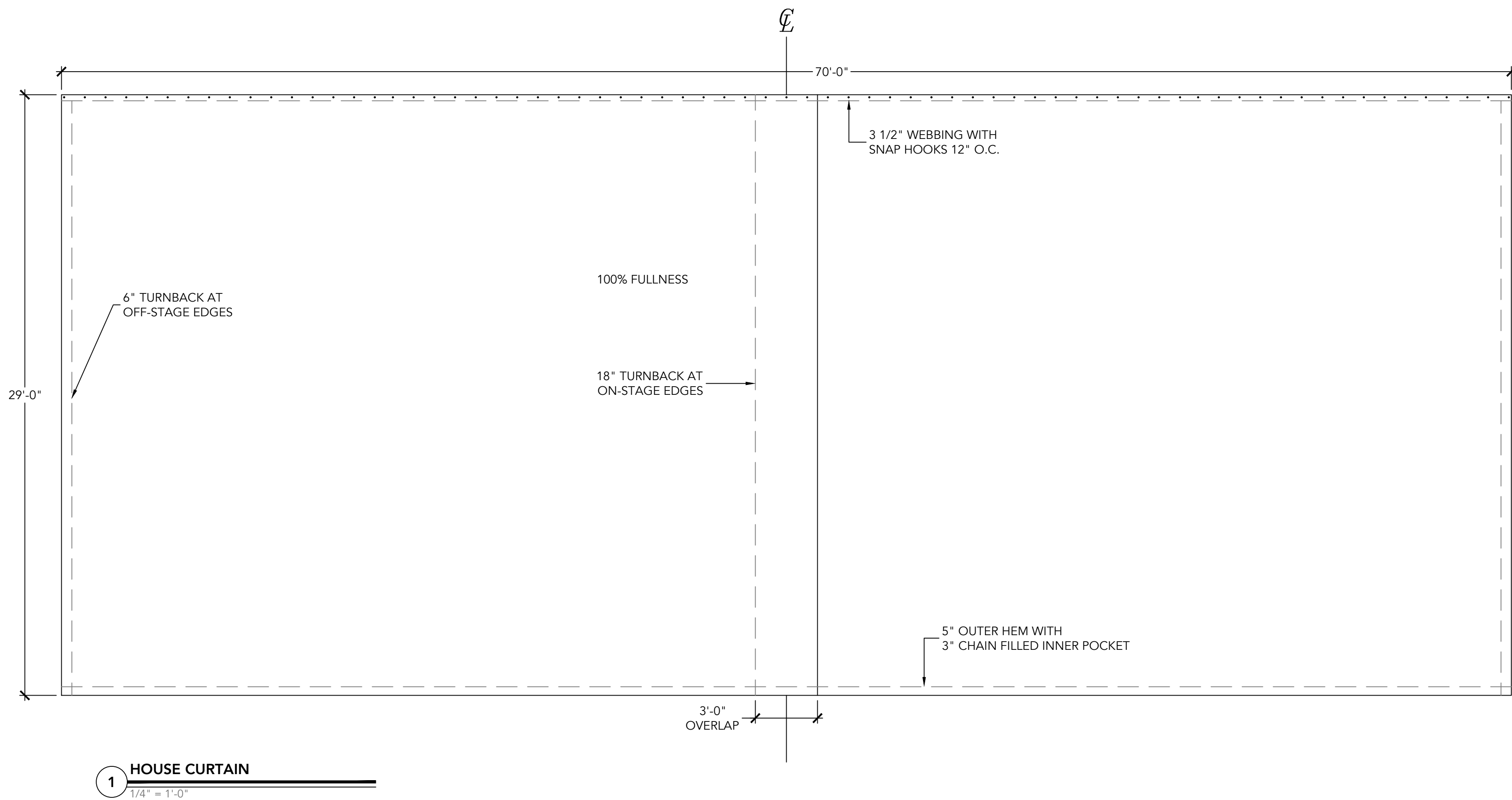
Planning | Architecture | Interior Design

**Northeast
Metropolitan
Regional
Vocational High
School**
100 Hemlock Road,
Wakefield, MA 01880

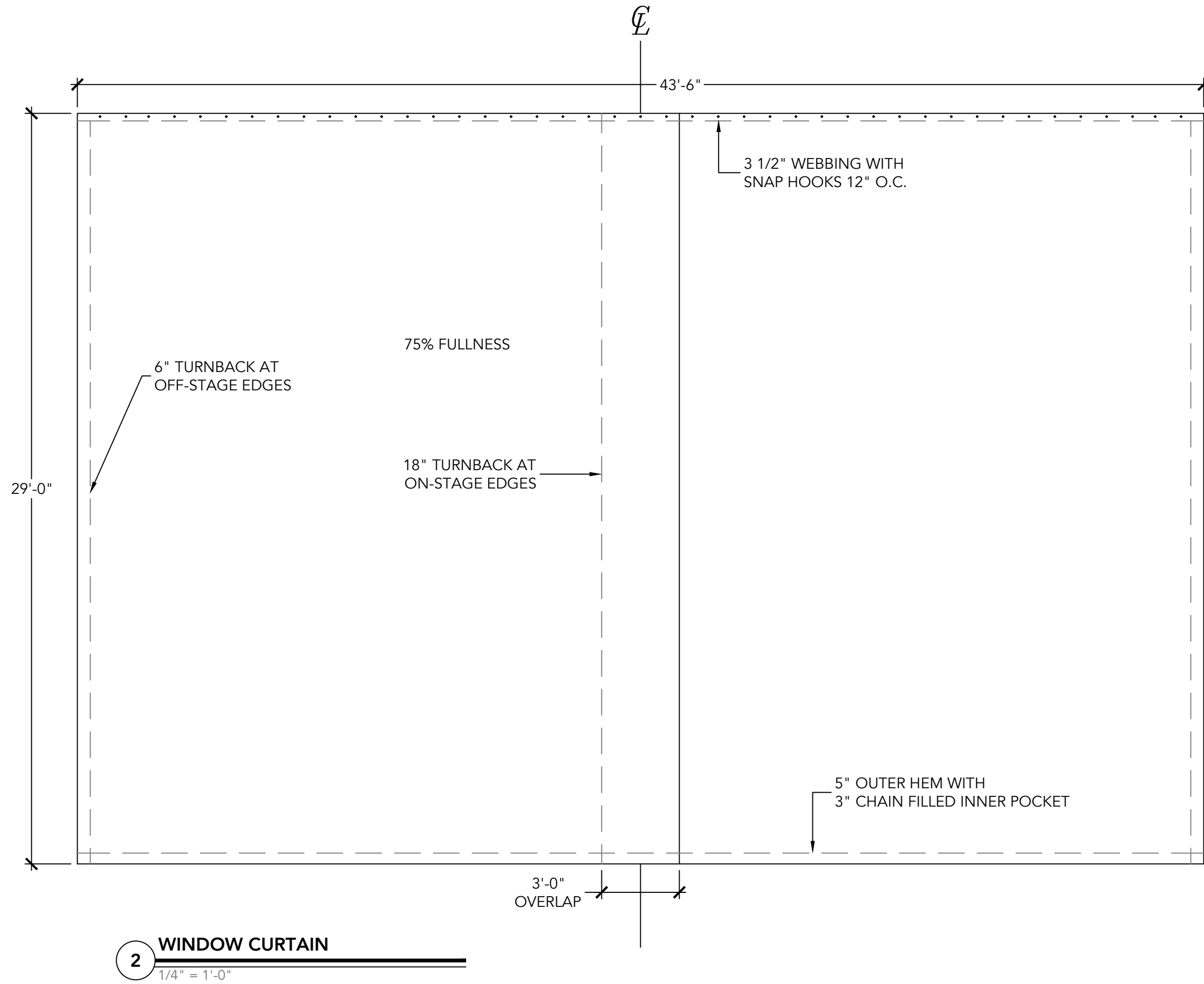
Theatre Consultant

**STUDIO
T+L**

STUDIO T+L LLC
333 4th Street
Brooklyn, NY 11215
718.789.0588
www.Studio-TL.com

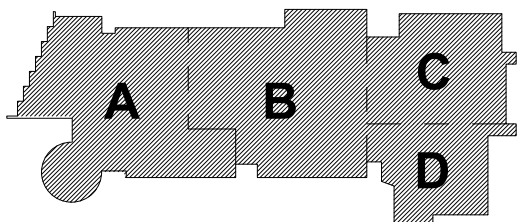


1 HOUSE CURTAIN
1/4" = 1'-0"



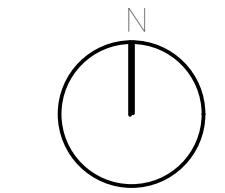
2 WINDOW CURTAIN
1/8" = 1'-0"

DRAPERY SCHEDULE							
ITEM	QUANTITY	HEIGHT	WIDTH	FULLNESS	FABRIC	COLOR	NOTES
HOUSE CURTAIN	2	29'-0"	36'-6"	100%	FABRIC #1 & 2	TBD	
WINDOW CURTAIN	2	29'-0"		75%	FABRIC #1 & 2	TBD	

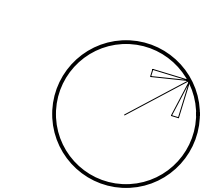


KEY PLAN

PROJECT NORTH



MAGNETIC NORTH



**HOUSE AND
WINDOW
TRAVELER
CURTAINS**

Scale: AS NOTED
Job No.: 20202
Drawn By: JL
Date: January 13th, 2023

TD-1

© COPYRIGHT 2022 DRUMREY ROSANE ANDERSON, INC.