

OPM SUBMITTAL REVIEW & COORDINATION

## OPM'S COORDINATED DESIGN REVIEW

6C.2.1 - 02

## NORTHEAST METRO TECH – 90% CD REVIEW COMMENTS

Date:	5/15/2023
Project:	Northeast Metropolitan Regional Vocational High School Project
Subject:	90% CD Cost Estimate Set - PMA Review Comments (3/31/2023 Set Date)
Prepared by:	PMA Consultants

Item No.	Ref Drawing.	Date Opened	Document Set	Review Comment	Action by	Comment Response	Status
1.0 Civil							
1.0.1	C-401	8/19/2022	DD	As discussed via email on 7/27/22, the fire hydrant at the SW corner of the building can be shifted South or in the adjacent island to allow for deletion of ~275' of 8" DI piping which would allow for cost savings.	Nitsch		Open
1.0.2	C-400	8/19/2022	DD	Confirm diameter of flared end pipe at FES-2.	Nitsch		Open
1.0.3	C-402	8/19/2022	DD	PMA believes generator will not located as shown per discussions with WMGLD. Please confirm generator/location should be adjusted.	Nitsch/Bala		Open
1.0.4	C-503	8/19/2022	DD	As noted, detention basin detail needs to be incorporated into Civil drawings.	Nitsch		Open
1.0.5	C-402 & C-406	1/20/2023	60% CD	Please confirm Gilbane PRE RFI #3 has been addressed related to drainage.	Nitsch		Open
1.0.6	GENERAL	1/20/2023	60% CD	DRA to confirm building location has reference point to baseline survey.	Nitsch		Open
1.0.7	GENERAL	1/20/2023	60% CD	DRA to confirm with GBCO logistics/site utilization plans for construction material to be separate drawings/not included in Civil Set	Nitsch		Open
2.0 Traffic							
3.0 Landscape							
3.0.1	L-301	8/19/2022	DD	See attached DCR Added Swing Gates document. Per DCR request, please incorporate a new manual swing gate at the Farm Street to new driveway connection and Spruce Path (breakheart path) to new driveway connection.	Warner Larson		Open
3.0.2	L305	8/19/2022	DD	Foul pole only called out on 3rd base line, not 1st base line.	Warner Larson		Open
3.0.3	L305	8/19/2022	DD	Gate in Right Field could have a approximate size for Base of Design.	Warner Larson		Open
3.0.4	L305	8/19/2022	DD	Fence in Right field ends shy of Scoreboard, should this wrap around entire field?	Warner Larson		Open
3.0.5	L302/L303 & T-0-01	11/28/2022	60% CD	Change manual sliding vehicular gate to automatic and manual swing gate to automatic arm per TN/DD.	Warner Larson & 3SI		Open
3.0.6	L301 and L302	1/20/2023	60% CD	Per meeting with DCR and NEMT, drawings to be updated to include chain and posts at driveway and entry and entry to general site.	Warner Larson		Open
3.0.7	ALL	1/20/2023	60% CD	Landscape/Architectural/Civil/Structural Drawings should be updated to reflect owner request changing tennis courts to new storage building. Note for 90% CD drawing package	Warner Larson, Nitsch, DRA, EDG		Open
3.0.8	L302, L601, C602	1/20/2023	60% CD	Please confirm Gilbane PRE RFI #2 has been addressed related to guardrail details at the segmented retaining wall.	Warner Larson, Nitsch		Open

Item No.	Ref Drawing.	Date Opened	Document Set	Review Comment	Action by	Comment Response	Status
3.0.9	L203, 5/L603	5/15/20223	90% CD	Coordinate student lot gate access with Owner (fob, keycard, etc.).	Warner Larson, BALA, DRA		Open
4.0 Architecture							
4.0.1	GENERAL	8/19/2022	DD	Demolition drawings under Civil and Landscape drawings - should these be changed to the Architectural set (per MSBA DD checklist)?	DRA		Open
4.0.2	GENERAL	8/19/2022	DD	Hazardous Materials/Abatement Drawings Missing.	DRA		Open
4.0.3	A1-0-0	8/19/2022	DD	Under Typ. Partition notes --> MASONRY partitions, there is an incorrect reference under flags 8.0-12.1 referencing details being on sheet A1-0-4 (which is not a partition drawing). Please update notes under those flags to correctly reference A1-0-0 or future/correct partition drawing.	DRA		Open
4.0.4	A1-0-0	8/19/2022	DD	Will partition details also make reference to 3 5/8" metal stud on the detail itself (meaning- will the stud have a callout indicating it is a stud on bottom of detail or elsewhere?). Partition details look good.	DRA		Open
4.0.5	A1-0-1	8/19/2022	DD	Furniture for cafeteria should be shown on overall floor plan here	DRA		Open
4.0.6	A1-0-1 : A1-0-5	8/19/2022	DD	Overall/floor plans look good, team to discuss if overall plans for each floor should be color coded by program.	DRA		Open
4.0.7	A1-0-5	8/19/2022	DD	Overall roof plan is missing structural grid lines (other overall plans have grid lines greyed out in background).	DRA		Open
4.0.8	A3-2-1:A3-2-14	8/19/2022	DD	Wall Section drawings should be rotated in order for sections to be legible without rotating screen or hard drawings in hand (should be reviewing wall sections from bottom floor-top floor without needing to rotate page). Without rotating, drawing is impossible to read.	DRA		Open
4.0.9	GENERAL	8/19/2022	DD	Mobilization/Enabling under Civil and Landscape drawings - should these be changed to the Architectural set (per MSBA DD checklist)?	DRA		Open
<del>4.0.10</del>	<del>GENERAL</del>	<del>8/19/2022</del>	<del>DD</del>	<del>Record Item: Final selection of Graphic Arts printer to be coordinated with construction / location within building depending on weight limitations.</del>	<del>DRA</del>		<del>Closed</del>
4.0.11	GENERAL	8/19/2022	DD	Confirm quantity of student lockers carried vs. required in general hallways.	DRA		Open
4.0.12	A1-2-1A	8/19/2022	DD	Review and slope of insulation on media center roof, concern on water pooling with some areas currently designated to slope towards center and do not see roof drains in the center glass area	DRA		Open
4.0.13	A1-2-1A	8/19/2022	DD	Sloping/proposed drainage pattern for media center is appears complex, team to review ways to simplify (i.e. all pitch towards roof edge?)	DRA		Open
4.0.14	A1-2-1A	8/19/2022	DD	Slope/drainage pattern missing in shaded area from column lines J-RD1	DRA		Open
4.0.15	GENERAL	8/19/2022	DD	Roof plans are missing walkway pads, please incorporate proposed walkway design into roof drawings for each specific part of the building (A, B, C, D)	DRA		Open
4.0.16	GENERAL	8/19/2022	DD	Roof drawings should indicate elevations on each specific roof	DRA		Open
4.0.17	GENERAL	8/19/2022	DD	Drawings do not indicate locations of skylights. Please review and confirm no skylights are intended to occur at NEMT (besides media center glass dome piece)	DRA		Open
4.0.18	GENERAL	8/19/2022	DD	PMA did not see on the drawings and does not believe there are penthouses proposed for NEMT but ask DRA to confirm	DRA		Open
4.0.19	GENERAL	8/19/2022	DD	PMA did not see on the drawings and does not believe there are chimneys proposed for NEMT but ask DRA to confirm	DRA		Open

Item No.	Ref Drawing.	Date Opened	Document Set	Review Comment	Action by	Comment Response	Status
4.0.20	A1-0-5	8/19/2022	DD	Roof Hatch is confirmed for A roof (and presumably this is access to B roof), but asks DRA to review and confirm access to general roofs area for C/D is based off doorway off main staircase in NE portion of the building	DRA		Open
4.0.21	A1-2-1A	8/19/2022	DD	Please advise on access to green roof above cafeteria	DRA		Open
4.0.22	A1-2-1A to A1-2-1D	8/19/2022	DD	While unrelated to installation of roof, layouts for future roof areas that are to receive solar panels needs to be provided/indicated. Potentially background hatch indicating future areas to receive PVs?	DRA		Open
4.0.23	GENERAL	8/19/2022	DD	DRA to review if gutters/heat trace is required along roof edges that overhang areas around the building to avoid icicles in winter/potential impalement situation	DRA		Open
4.0.24	A2-0-1 to A2-1-8	8/19/2022	DD	Building elevations are missing major mechanical equipment/any potential rooftop structure hiding mechanical units	DRA		Open
4.0.25	A2-0-1 to A2-1-9	8/19/2022	DD	Building elevations need to incorporate control/expansion joints in section views	DRA		Open
4.0.26	A2-2-1	8/19/2022	DD	Typ. science lab elevation needs to include notations for wall monitor/markerboards/tackboards/appliances	DRA		Open
4.0.27	GENERAL	8/19/2022	DD	RCPs needs cover sheet or legend on first drawing indicating each fixture (smoke sensor, lighting pendant, sprinkler head, fans, supply/return grilles, FA strobes, etc.)	DRA		Open
4.0.28	A8-1-0C	8/19/2022	DD	RCPs on this level missing ceiling lighting layout for most spaces (typ.)	DRA		Open
4.0.29	A8-1-0C	8/19/2022	DD	RCP material for miscellaneous rooms missing (Boiler Room, Elect. Main, Metal Fab, etc.)	DRA		Open
4.0.31	A1-0-1	8/19/2022	DD	It appears the Lower Level Plan should note "Area C & D".			Open
4.0.32	A1-1-0C, A1-1-0D & TYP	8/19/2022	DD	Title under floor plan and highlighted building key plan appear that they need to be updated to reflect Area C lower level. See A1-1-0D for similar issue. Can DRA review all floor plan titles and highlighted building key plans match?	DRA		Open
4.0.33	A8-1-0C	8/19/2022	DD	In general, most RCPs in most areas on this drawing need to be progressed in next update to show general lighting layout, fire protection heads, mechanical information (think classroom fans). Some RCPs in specific rooms/hallways have ceiling heights but others are missing	DRA		Open
4.0.34	A8-1-0D	8/19/2022	DD	Auto Tech. missing ceiling height	DRA		Open
4.0.35	A8-1-0D	8/19/2022	DD	In general, most RCPs in most areas on this drawing need to be progressed in next update to show general lighting layout, fire protection heads, mechanical information (think classroom fans), miscellaneous devices, etc. Some RCPs in specific rooms/hallways have ceiling heights but others are missing	DRA		Open
4.0.36	A8-1-1A	8/19/2022	DD	Lobby ceiling material that transitions into corridor needs detail to show transition	DRA		Open
4.0.37	A8-1-1A	8/19/2022	DD	Cafeteria ceiling material changes needs detail section view highlighting transition	DRA		Open
4.0.38	A8-1-1A through A8-1-1D	8/19/2022	DD	In general, most RCPs in areas on this drawing need to be progressed in next update to show fire protection heads, mechanical information (think classroom fans), miscellaneous devices, etc. Most RCPs in specific rooms/hallways have ceiling heights but others are missing	DRA		Open
4.0.41	A8-1-1C	8/19/2022	DD	Transition detail showing condition of corridor ceiling into opening prior to Auditorium entrance required	DRA		Open

Item No.	Ref Drawing.	Date Opened	Document Set	Review Comment	Action by	Comment Response	Status
4.0.43	A8-1-2A through A8-1-2D	8/19/2022	DD	In general, most RCPs in areas on this drawing need to be progressed in next update to show lighting layout, fire protection heads, mechanical information (think classroom fans), miscellaneous devices, etc. Most RCPs in specific rooms/hallways have ceiling heights but other small rooms are missing (i.e. Storage)	DRA		Open
4.0.47	A8-1-3A through A8-1-3D	8/19/2022	DD	In general, most RCPs in areas on this drawing need to be progressed in next update to show lighting layout, fire protection heads, mechanical information (think classroom fans), miscellaneous devices, etc. Most RCPs in specific rooms/hallways have ceiling heights but other small rooms are missing (i.e. Storage)	DRA		Open
4.0.48	A8-1-3A	8/19/2022	DD	Special focus on ceiling heights/devices/lighting layout for Media Center need to be honed in on at next drawing set.	DRA		Open
4.0.51	A8-1-3C	8/19/2022	DD	Special focus on ceiling heights/devices/lighting layout for Auditorium/Stage need to be honed in on at next drawing set.	DRA		Open
4.0.52	A8-1-3D	8/19/2022	DD	Special focus on ceiling heights/devices/lighting layout for Gymnasium need to be honed in on at next drawing set.	DRA		Open
4.0.53	A8-1-4A through A8-1-4D	8/19/2022	DD	In general, most RCPs in areas on this drawing need to be progressed in next update to show lighting layout, fire protection heads, mechanical information (think classroom fans), miscellaneous devices, etc. Most RCPs in specific rooms/hallways have ceiling heights but other small rooms are missing	DRA		Open
4.0.54	A6-2-1 to A6-2-3	8/19/2022	DD	Most door schedules still need to reference Hardware set's that will go along with each door.	DRA		Open
4.0.55	A6-3-1 to A6-3-7	8/19/2022	DD	Window/storefront/curtainwall details still needed for jamb/head details	DRA		Open
4.0.66	GENERAL	1/20/2023	60% CD	Please confirm Gilbane PRE RFI #4 has been addressed related to elevation discrepancies.	DRA		Open
4.0.67	GENERAL	1/20/2023	60% CD	DRA to provide early site bid package drawings when available (site first, then structural steel/foundations package).	DRA		Open
4.0.68	GENERAL	1/20/2023	60% CD	PMA acknowledging DRA is not providing demolition plans, building being demo'ed entirely and demolition/hazardous materials specifications still to be provided. PMA also acknowledging that DRA has included demo/site prep on Landscape L104 plan for reference as well.	DRA		Open
4.0.69	GENERAL	1/20/2023	60% CD	PMA/DRA/GILBANE working through coordination of Architectural drawings elevations vs. landscape/civil plans (DRA preference to keep Architectural baseline/landscape separate but make plenty of notes indicating what the first floor elevation on architectural equals landscape, but Gilbane has expressed concern with this methodology),	DRA		Open
4.0.70	A1-1-0C	1/20/2023	60% CD	Question mark next to wire mesh partition should be removed.	DRA		Open
4.0.71	GENERAL	1/20/2023	60% CD	Team to discuss door stops/any required blocking (limit any damage to walls behind doors).	DRA		Open
4.0.72	A1-1-1C	1/20/2023	60% CD	Recommend callout for key areas such as multi-purpose room, stage.	DRA		Open
4.0.73	A1-1-1B	1/20/2023	60% CD	Recommend callout for detailing for large scale plan for main entry area.	DRA		Open
4.0.74	A1-1-1A	1/20/2023	60% CD	Recommend callout for detail for large scale plan for rotunda/school main office space	DRA		Open
4.0.75	A1-1-1A	1/20/2023	60% CD	Recommend callout for detail for large scale plan for main entry vestibule/lobby space.	DRA		Open

Item No.	Ref Drawing.	Date Opened	Document Set	Review Comment	Action by	Comment Response	Status
4.0.76	A1-2-1A	1/20/2023	60% CD	Pre vegetated roof note project NW corner is incorrect/needs revising.	DRA		Open
4.0.77	A1-2-1D	1/20/2023	60% CD	Error on a section view line or callout between grid lines 16-17.7 (needs removal).	DRA		Open
4.0.78	A1-2-1C	1/20/2023	60% CD	Suggest removing walkway pad where ladder is by grid line 7.2	DRA		Open
4.0.79	A2-0-1	1/20/2023	60% CD	Mechanical units still need to be shown on building elevations	DRA		Open
4.0.80	A1-2-1B	1/20/2023	60% CD	Missing mechanical unit callout plan east between grid lines 16 and 17.7	DRA		Open
4.0.81	A2-0-1	1/20/2023	60% CD	Need coordination of full building height elevation against site/landscape elevation notes.	DRA		Open
4.0.82	A2-0-1 through A2-1-8	1/20/2023	60% CD	Tracking site grading/architectural drawings elevation coordination (previous comment above about PMA/DRA/Gilbane tracking concern on different elevations between architectural drawings vs. site)	DRA		Open
4.0.83	A2-0-1 through A2-1-8	1/20/2023	60% CD	Expansion joint between column lines AA and Y.9 not shown on SOME building elevation views where these column lines exist. Asking DRA to add this expansion joint for any building elevation that has these column lines. Example: South elevation (detail 4 on A2-1-2)	DRA		Open
4.0.84	A2-2-1 through	1/20/2023	60% CD	Interior elevations look good but still need to note tackboards/markerboards/etc. on classroom/science room spaces.	DRA		Open
4.0.85	A2-2-6	1/20/2023	60% CD	Detail 2 appears to have incorrect reference to Multipurpose room.	DRA		Open
4.0.86	GENERAL	1/20/2023	60% CD	Highlighted key plan does not accurately reflect the floor plan location shown on several drawings (example: A1-1-0C, Area C displayed; however, Area A highlighted on key plan).	DRA		Open
4.087	A1-1-1C	1/20/2023	60% CD	Per Early Childhood Programming Meeting on 10/5/22, PMA believes department leaders had requested multiple tack boards. The current design appears to include only (1) 8' tackboard. Please confirm if additional tackboards are required to meet the department leaders needs.	DRA		Open
4.0.88	A8-1-2A	1/20/2023	60% CD	Per Design & Visual Communications Programming Meeting on 10/3/22, high ceilings in the Photo/Storage room were requested. A ceiling height is not listed for this space. Please confirm ceiling height and verify it meets staff needs	DRA		Open
4.0.89	A3-2-1 through A3-2-19	1/20/2023	60% CD	Wall Sections look good dimension wise as well as reinforcing, façade, etc. but need some sections need to call out flashing, and additionally details for transition of materials are required to be circled on sections/referred to details page (good example are upper walls into overhang detail).	DRA		Open
4.0.90	A3-2-4	1/20/2023	60% CD	Wall Section 1 on this page indicates granite veneer, should be arriscraft.	DRA		Open
4.0.91	A5-3-1	1/20/2023	60% CD	Detail G needs revising, does not show flashing detail.	DRA		Open
4.0.92	A5-3-1	1/20/2023	60% CD	Detail A roof thickness does not add up to 6 1/2" total, PMA calculates 6". Please clarify intent or if something is missing.	DRA		Open
4.0.93	GENERAL	1/20/2023	60% CD	Window, Curtainwall, Storefront, and Partition types are highlighted. Schedules still required.	DRA		Open
4.0.94	GENERAL	1/20/2023	60% CD	Storefront details still required	DRA		Open
4.0.95	GENERAL	1/20/2023	60% CD	Ramp plans/section/details required for exterior ramp from lower to upper campus, and loading dock area.	DRA		Open
4.0.96	GENERAL	1/20/2023	60% CD	DRA to confirm location of guardrail/handrail details.	DRA		Open
4.0.97	GENERAL	1/20/2023	60% CD	RCP's still need to coordinate with mechanical drawings (i.e. classroom fans, diffusers should be better highlighted).	DRA		Open



Item No.	Ref Drawing.	Date Opened	Document Set	Review Comment	Action by	Comment Response	Status
4.0.98	A1-1-1A, 1/A7-1-1, 1/A7-1-2,	5/15/2023	90% CD	The bench under Stair 1 doesn't appear to have a callout on the Architectural floor plans and the detail is difficult to find. Suggest adding a callout and detail for the bench on the floor plans.	DRA		Open
4.0.99	A1-1-1A	5/15/2023	90% CD	Locker Room A148A shows lockers on the plan West wall; however, a locker count or tier height is not identified.	DRA		Open
4.0.100	A1-1-1A, etc.	5/15/2023	90% CD	Missing locker count and tier height on several drawings.	DRA		Open
4.0.101	A1-1-1A	5/15/2023	90% CD	Please confirm the swing for door A141C.2 (Room A141C) is correct. As currently drawn, the inswing door may interfere with the adjacent closet doors. If it is anticipated that this will be a high traffic door, please review if it should be changed to an outswing door.	DRA		Open
<b>5.0 Equipment</b>							
5.0.1	EQ2.14	1/20/2023	60% CD	Per Health Assisting Programming Meeting on 10/5/22, data drops were added at each bed. The drawings appear to reflect this for the beds surrounding the shop space; however, a data drop is not shown for the Mock Ant room. Please confirm if a data drop is required here.	DRA		Open
<b>6.0 Theater</b>							
<b>7.0 Food Service</b>							
<b>8.0 Structure</b>							
8.0.1	GENERAL	8/19/2022	DD	Non-PV roof areas should have their steel designed accordingly to account for the load reduction.	EDG		Open
8.0.2	GENERAL	8/19/2022	DD	No detail for the unique architectural feature of the roof structure of the Media Center. (at a minimum the peak of the roof)	EDG		Open
8.0.3	GENERAL	8/19/2022	DD	No detail for the unique architectural feature of the roof structure of the Auditorium. (or no % slope shown that steel will be erected as)	EDG		Open
8.0.4	GENERAL	8/19/2022	DD	Fireproofing to be said that it is required at the underside of structural decks at the roof level only.	EDG		Open
8.0.5	GENERAL	8/19/2022	DD	All beams and columns should be sized. Columns are mostly sized by the schedules that pertain to each drawing, but beams could be sized more often for full clarity	EDG		Open
8.0.6	S1-1-4C	8/19/2022	DD	Diagonal and horizontal bridging should indicate sizing	EDG		Open
8.0.7	S1-1-4C	8/19/2022	DD	Framing around skylights should indicate sizing	EDG		Open
8.0.8	S1-1-4D	8/19/2022	DD	Diagonal and horizontal bridging should indicate sizing	EDG		Open
8.0.9	S2-0-1	8/19/2022	DD	Sections to have title's to each box indicating what it relates too	EDG		Open
8.0.10	S2-0-2	8/19/2022	DD	Sections to have title's to each box indicating what it relates too	EDG		Open
8.0.11	S2-0-3	8/19/2022	DD	Sections to have title's to each box indicating what it relates too	EDG		Open
8.0.12	S3-0-1	8/19/2022	DD	Sections to have title's to each box indicating what it relates too	EDG		Open
8.0.13	All foundation plans (S1-1-OOC through S1-1-1C)	1/20/2023	60% CD	Soil bearing pressure /live loads required for SOG areas (indicate any limitations or how bedrock affects this)	EDG		Open
8.0.14	All foundation plans (S1-1-OOC through S1-1-1C)	1/20/2023	60% CD	Numerous footings through most foundation plans missing top of footing elevations, please address and have all footings top of footing elevation in next submission.	EDG		Open
8.0.15	All mezzanine framing drawings	1/20/2023	60% CD	Mezzanine framing plan needs to indicate design loads. Typical throughout all mezzanine drawings.	EDG		Open

Item No.	Ref Drawing.	Date Opened	Document Set	Review Comment	Action by	Comment Response	Status
8.0.16	All framing drawings (S1-1-C through S1-1-5D)	1/20/2023	60% CD	Dimensional spacing should be indicated as "EQ" for equal to indicate similar spacing between beam members.	EDG		Open
8.0.17	S1-1-2A	1/20/2023	60% CD	Missing notes for typ. framing sections, as well as what hatches for different areas mean.	EDG		Open
8.0.18	S1-1-3A	1/20/2023	60% CD	Suggest cleaning up column line 18 intersection with N.3-P.7 (believe trying to highlight opening)	EDG		Open
8.0.19	S1-1-3A	1/20/2023	60% CD	Suggest cleaning up column line 9 intersection with N-Q(believe trying to highlight opening)	EDG		Open
8.0.20	S1-1-3A	1/20/2023	60% CD	Media center area missing 3 column line notes on southeast end of rotunda	EDG		Open
8.0.21	S1-1-3B	1/20/2023	60% CD	Need to clean up openings with steel members next to courtyard (Column Lines V-W, intersections with 9 and 18)	EDG		Open
8.0.22	GENERAL	1/20/2023	60% CD	Dimensions are still needed for most if not all openings highlighted on framing plans (some large openings have dimensions). Typical comment for most drawings.	EDG		Open
8.0.23	GENERAL	1/20/2023	60% CD	DRA to coordinate with EDG regarding requirements for slab depression at gymnasium floor (DRA to confirm specified wood floor and slab depression are fully coordinated)	EDG		Open
8.0.24	S1-1-0C	1/20/2023	60% CD	Clean up of existing dimensions / adding dimensions for various wall segments required for concrete retaining wall on Column Lines Y.9-AA through DD	EDG		Open
8.0.25	S1-1-0D	1/20/2023	60% CD	Dimensions required to indicate thickness of concrete retaining wall between column lines Z-DD.9	EDG		Open
8.0.26	GENERAL	1/20/2023	60% CD	DRA to confirm only underside of roof decking is to have cementitious fireproofing applied (all areas not required).	EDG		Open
8.0.27	S1-1-5C	1/20/2023	60% CD	DRA to shade correct section of roof framing shown on this plan (incorrect shading currently)	EDG		Open
8.0.28	S1-1-5D	1/20/2023	60% CD	DRA to shade correct section of roof framing shown on this plan (incorrect shading currently)	EDG		Open
8.0.29	S1-1-5A through	1/20/2023	60% CD	DRA to include callout for mechanical units on roof for typical mech. Equipment support detail (detail 5 on S0-0-8)	EDG		Open
8.0.30	GENERAL	1/20/2023	60% CD	DRA/PMA to discuss concrete compressive strength requirements (4500psi vs 4000psi)	EDG		Open
8.0.31	GENERAL	1/20/2023	60% CD	DRA not R12 indicates no pipes or conduit to be placed in slabs on grade or elevated slabs. Seems to conflict with any potential underslab electric/plumbing on any grade levels. Coordination discussion required.	EDG		Open
9.0 GeoTech							
10.0 Plumbing							
10.0.1	GENERAL	8/19/2022	DD	Trap Primers are suggested for all floor drains.	BALA		Open
10.0.2	GENERAL	8/19/2022	DD	Any under slab piping should show symbols and/or verbage/callouts that they are going "up"	BALA		Open
10.0.3	GENERAL	8/19/2022	DD	No waterhammer arrestors are indicated in drawings	BALA		Open
10.0.4	GENERAL	8/19/2022	DD	The line item of "provide wall hydrant" is this appropriate for the plumbing drawings? Assuming this means a wall hung fire hydrant?	BALA		Open
10.0.5	P1-0-0A	8/19/2022	DD	Missing Hot Water lines to sinks in Servery	BALA		Open
10.0.6	P1-0-0A	8/19/2022	DD	Missing Cold Water lines to sinks in Servery	BALA		Open



Item No.	Ref Drawing.	Date Opened	Document Set	Review Comment	Action by	Comment Response	Status
10.0.7	P1-0-0A	8/19/2022	DD	Missing Gas lines to appliances in Servery	BALA		Open
10.0.8	P1-0-0A	8/19/2022	DD	Bathrooms off Kitchen missing sinks	BALA		Open
10.0.9	P1-0-0A	8/19/2022	DD	Bathrooms off Kitchen missing HW/CW lines	BALA		Open
10.0.10	P1-0-0A	8/19/2022	DD	Toilets in bathroom missing water line connection	BALA		Open
10.0.11	P1-0-0A	8/19/2022	DD	HW/CW lines missing to sink in Cosmetology Bathroom	BALA		Open
10.0.12	P1-0-0B	8/19/2022	DD	Is there a code requirement that the Fire Protection service should be tagged to the Fire Protection subcontractor/drawings?	BALA		Open
10.0.13	P1-0-0B	8/19/2022	DD	There is a circle not labeled in B102 "Plumb-Comp Air", is this a gas/oil interceptor? If so, should be labeled.	BALA		Open
10.0.14	P1-0-0B	8/19/2022	DD	Should be a TY fitting at the meeting of piping from Gas/Oil separator and sanitary exit coming from HVAC Tech B103	BALA		Open
10.0.15	P1-0-0B	8/19/2022	DD	Gas/Oil Separator fixture comes into the HVAC Tech B103 shop and does not connect to anything. Should have some sort of connection called out	BALA		Open
10.0.16	P1-0-0B	8/19/2022	DD	Gas/Oil Separator fixture comes into the Electrical B104 shop and does not connect to anything. Should have some sort of connection called out	BALA		Open
10.0.17	P1-0-0B	8/19/2022	DD	Cleanout should have correct identification symbol in Office B119	BALA		Open
10.0.18	P1-0-0B	8/19/2022	DD	Sanitary drain piping to sinks are not complete. Includes shop sinks, Culinary Arts sinks, floor drains	BALA		Open
10.0.19	P1-0-0B	8/19/2022	DD	Lack of floor drains in electrical and HVAC shop?	BALA		Open
10.0.20	P1-0-0C	8/19/2022	DD	Should the sanitary line have TY's to branch off to each floor drain? Currently just the main shown, however the branches will also be under slab.	BALA		Open
10.0.21	P1-0-0C	8/19/2022	DD	In automotive shop, there is a piece of pipe at the bottom of the drawing that leads to no where, from no where. BALA to confirm	BALA		Open
10.0.22	P1-0-0C	8/19/2022	DD	Sanitary line is open ended in Auto Tech between 8.2 and 10 column lines. BALA to confirm	BALA		Open
10.0.23	P1-0-0C	8/19/2022	DD	There are three symbols in the boiler room COO2, one looks like a gas/oil interceptor - if so, should be labeled with piping included. Another symbol to the left of it that's a square, and another one to the left of that. Those are not labeled.	BALA		Open
10.0.24	P1-0-0D	8/19/2022	DD	"Garage waste" line in Auto tech (between column lines 21.8 and 20.2) coming from the Gas/Oil interceptor is open ended, leading no where	BALA		Open
10.0.25	P1-1-0C	8/19/2022	DD	There is 1 plumbing line shown to go to the plumbing fixtures in Auto Body TLT 579. Is this Domestic water, vents, or drains? All of these should be labeled and shown for each plumbing fixture.	BALA		Open
10.0.26	P1-1-0C	8/19/2022	DD	Plumbing line that crosses horizontally through Weights Room and Related CR Room is not labeled or sized	BALA		Open
10.0.27	P1-1-0C	8/19/2022	DD	Should there be a valve symbol shown in the line for "master compressed air shutoff for Auto Collision area"?	BALA		Open
10.0.28	P1-1-0C	8/19/2022	DD	Should compressed air line be shown as run to paint booths? Currently shows a line going through only 1 booth.	BALA		Open
10.0.29	P1-1-0C	8/19/2022	DD	"interior Hose Bib", water line should be shown for this?	BALA		Open
10.0.30	P1-1-0C	8/19/2022	DD	Plumbing line that crosses horizontally through Metal Fab and goes into Tool Crib/Metal Fab Bathroom is not sized or labeled	BALA		Open
10.0.31	P1-1-0C	8/19/2022	DD	Floor Drains are not labeled in Boiler Room	BALA		Open

Item No.	Ref Drawing.	Date Opened	Document Set	Review Comment	Action by	Comment Response	Status
10.0.32	P1-1-0C	8/19/2022	DD	Sink P-3C does not show HW/CW lines to the sink.	BALA		Open
10.0.33	P1-1-0C	8/19/2022	DD	None of the plumbing lines that go down the hallway from north to south are sized	BALA		Open
10.0.34	P1-1-0C	8/19/2022	DD	None of the plumbing lines that go down the hallway from north to south are labeled, except for TW and TWR.	BALA		Open
10.0.35	P1-1-0C	8/19/2022	DD	Boilers are not shown? This is major equipment that should be shown on the DD drawings, including the plumbing lines required to serve it	BALA		Open
10.0.36	P1-1-0D	8/19/2022	DD	Plumbing lines down the hallway (drawing plan northwest) are not labeled or sized	BALA		Open
10.0.37	P1-1-0D	8/19/2022	DD	Bathroom for the Auto Tech shop has a sink and a water fountain outside the bathroom, neither of those have plumbing lines run to it	BALA		Open
10.0.38	P1-1-0D	8/19/2022	DD	Besides compressed air and storm drains, most of the piping is not labeled or sized	BALA		Open
10.0.39	P1-1-0D	8/19/2022	DD	"8" storm dn" and "8" vent for radon mitigation" are pointing at the same pipe, should there be two arrows?	BALA		Open
10.0.40	P1-1-0D	8/19/2022	DD	In Auto Tech, there are two floor drains - one next to P-8 and one in bathroom. Is that a sufficient amount of floor drains for an Auto Shop?	BALA		Open
10.0.41	P1-1-1A	8/19/2022	DD	No plumbing lines (hw/cw/vent/drain) shown to sink PX-1 in Duplicating 175 of media Center. All should be labeled and sized	BALA		Open
10.0.42	P1-1-1A	8/19/2022	DD	Storm Drain line coming out of Media Center is going outdoors. BALA to confirm intent of Storm drain pipe outdoors on Level 1.	BALA		Open
10.0.43	P1-1-1A	8/19/2022	DD	TLT 655 only has vent plumbing going into bathroom, all other water and drain requirements should be included. Same for adjacent bathroom TLT 656	BALA		Open
10.0.44	P1-1-1A	8/19/2022	DD	No plumbing lines shown to ceiling hung water heater in TLT 656, as well as connecting that water heater to PX-1 in Duplicating	BALA		Open
10.0.45	P1-1-1A	8/19/2022	DD	TLT 518 only has one plumbing line designated to this room	BALA		Open
10.0.46	P1-1-1A	8/19/2022	DD	TLT 492 shows "8" ST" but is not pointing to a plumbing line	BALA		Open
10.0.47	P1-1-1A	8/19/2022	DD	Carpentry shop - P-3b, P-5, and P-8 do not show any plumbing lines to it	BALA		Open
10.0.48	P1-1-1A	8/19/2022	DD	Grease Trap actual fixtures are not established or indicated in Dishwashing 584. There should be identifiable fixtures that it is pointing to	BALA		Open
10.0.49	P1-1-1A	8/19/2022	DD	Water lines to be shown to EWH 2's in Plumbing shop	BALA		Open
10.0.50	P1-1-1A	8/19/2022	DD	Water lines to be shown to P-3B in plumbing shop	BALA		Open
10.0.51	P1-1-1A	8/19/2022	DD	No plumbing lines shown to Dishwasher Room 530 or the sinks outside of the room.	BALA		Open
10.0.52	P1-1-1A	8/19/2022	DD	No plumbing lines shown to Culinary Arts equipment	BALA		Open
10.0.53	P1-1-1B	8/19/2022	DD	EWB 3's outside of TLT 507 are in the middle of the hallway and one of them is inside a wall.	BALA		Open
10.0.54	P1-1-1B	8/19/2022	DD	Dashed line that leads to TLT593 and comes from TLT 641 (branches off headed towards HVAC Tech) is not labeled, sized or tied back to anything, just floating.	BALA		Open

Item No.	Ref Drawing.	Date Opened	Document Set	Review Comment	Action by	Comment Response	Status
10.0.55	P1-1-1B	8/19/2022	DD	In the middle of Electrical Tech it notes "3" vent to extend to nearby fixtures". It doesn't seem like there are any fixtures nearby. BALA to confirm intent.	BALA		Open
10.0.56	P1-1-1B	8/19/2022	DD	No floor drains shown in Plumbing shop, besides outside of Sink P-3B. BALA to confirm that is correct.	BALA		Open
10.0.57	P1-1-1B	8/19/2022	DD	In HVAC Tech, there is "8" vent for radon mitigation" inside the Office 508. Please confirm that these should be located in column enclosures and not in middle of office space	BALA		Open
10.0.58	P1-1-1B	8/19/2022	DD	Floor Drain to be labeled in Plumb Water Service Room 214	BALA		Open
10.0.59	P1-1-1B	8/19/2022	DD	Floor drain to be labeled in Fire Pump Room 205	BALA		Open
10.0.60	P1-1-1B	8/19/2022	DD	Item P-7 in the electrical shop has no plumbing lines roughed to it	BALA		Open
10.0.61	P1-1-1B	8/19/2022	DD	Item P-7 in the plumbing shop has no plumbing lines roughed to it	BALA		Open
10.0.62	P1-1-1C	8/19/2022	DD	There is a dashed line that leads from TLT 600 to the chase of both TLT 606 and 607. This line is not labeled or sized and open-ended. This line also branches out to the doorway of Kitchen 605.	BALA		Open
10.0.63	P1-1-1C	8/19/2022	DD	PX-1's in Kitchen 605, Dressing Room 123, Dressing Room 127, Creative Play 597 do not have all the plumbing lines run to them.	BALA		Open
10.0.64	P1-1-1C	8/19/2022	DD	TLT 646 and 647 do not have all plumbing lines run to them. There is a pipe that is coming up through the chases but it seems that it is only 1 pipe - whether vent, HW, CW, or drain. Others are missing	BALA		Open
10.0.65	P1-1-1D	8/19/2022	DD	Dashed line through Corridor 426 and it's associated branches are not labeled or sized.	BALA		Open
10.0.66	P1-1-1D	8/19/2022	DD	Floor drain is not labeled in Shower 564	BALA		Open
10.0.67	P1-1-1D	8/19/2022	DD	TLT 576, 89, 566, 572, 567, 565, 564, 553 and 552 do not have all plumbing lines run to them. There is a pipe that is coming up through the chases but it seems that it is only 1 pipe - whether vent, HW, CW, or drain. Others are missing	BALA		Open
10.0.68	P1-1-1D	8/19/2022	DD	Exam Room 92, Exam Room 574, and Resting Room 90 has sinks in rooms, but no plumbing lines run to them.	BALA		Open
10.0.69	P1-1-1D	8/19/2022	DD	TLT/Shower 566 does not have any floor drains. Typically rooms with showers have a floor drain. BALA to confirm this is correct.	BALA		Open
10.0.70	P1-1-2A	8/19/2022	DD	Floor drains in Mechanical 281 are not labeled.	BALA		Open
10.0.71	P1-1-2A	8/19/2022	DD	All PX-4 sinks in Science Labs/Prep Room's should have all plumbing lines designated to the fixtures	BALA		Open
10.0.72	P1-1-2A	8/19/2022	DD	In the Mechanical Room - Besides the RD line and the CA line, the other two plumbing lines (for the biotech compressor and the line leading towards the north side of the room) are not sized or labeled	BALA		Open
10.0.73	P1-1-2A	8/19/2022	DD	In Mechanical Room, there is no piping going to the Biotech vacuum pump and the biotech compressor tank.	BALA		Open
10.0.74	P1-1-3A	8/19/2022	DD	Hosebib for TLT 477 is located inside a wall. Should be relocated to show inside bathroom.	BALA		Open

Item No.	Ref Drawing.	Date Opened	Document Set	Review Comment	Action by	Comment Response	Status
10.0.75	P1-1-4A	8/19/2022	DD	TLT 253 has no sinks designated for this bathroom. BALA to confirm this is correct.	BALA		Open
10.0.76	P1-1-4A	8/19/2022	DD	TLT 632 does not have the toilet or the sink labeled.	BALA		Open
10.0.77	P1-1-4A	8/19/2022	DD	There is a dental seat that does not have PX-6 associated with it, like the others. While the PX-6 is there, it is in the middle of the room and over a normal desk. Should be relocated over the dental seat	BALA		Open
10.0.78	P1-1-4A	8/19/2022	DD	Where it notes that "each dental seat shall receive..." those plumbing lines should have sizes associated	BALA		Open
10.0.79	P1-1-4B	8/19/2022	DD	Two plumbing fixtures in Storage 459 should be labeled.	BALA		Open
10.0.80	P1-1-4C	8/19/2022	DD	One of the roof drains is located on a skylight.	BALA		Open
10.0.81	P1-0-0A	1/17/2023	60% CD	Many floor clean out symbols and labels are missing from ST piping on document	BALA		Open
10.0.82	P1-0-0A	1/17/2023	60% CD	Floor drains not labeled	BALA		Open
10.0.83	P1-0-0A	1/17/2023	60% CD	Grease Traps not labeled or sized (in Culinary Arts A148 and Dish A148K)	BALA		Open
10.0.84	P1-0-0A	1/17/2023	60% CD	"Matchline Area-A/Marchline Area-B" to be relocated so it is not in way of description of gas/oil interceptor	BALA		Open
10.0.85	P1-0-0A	1/17/2023	60% CD	Sanitary line in carpentry is not labeled or sized. Sanitary line in carpentry is missing piping to (2) floor drains who's symbols are present, just no piping	BALA		Open
10.0.86	P1-0-0A	1/17/2023	60% CD	Floor drains in TLT A142 and TLT A143 do not have sanitary piping to them.	BALA		Open
10.0.87	P1-0-0A	1/17/2023	60% CD	There is a sudden break in the piping run to TLT A141H, right in front of entrance to tool crib of Carpentry	BALA		Open
10.0.88	P1-0-0B	1/17/2023	60% CD	No sanitary drain line shown to floor drains in Plumbing Shop (2), TLT B104E, TLT B103C, (unlabeled) bathroom next to Locker B101B, Fire Pump Room, Plumb Water Service and Plumb Water Heater.	BALA		Open
10.0.89	P1-0-0B	1/17/2023	60% CD	No floor drains shown in the HVAC Shop	BALA		Open
10.0.90	P1-0-0B	1/17/2023	60% CD	Only (1) floor drain shown in Electrical at the southern most point of the shop. Is that sufficient?	BALA		Open
10.0.91	P1-0-0B	1/17/2023	60% CD	Equipment to be labeled (big circle) in Plumb Comp Air Room	BALA		Open
10.0.92	P1-0-0C	1/18/2023	60% CD	Bold circle in Plumbing Room C008 is not labeled or sized	BALA		Open
10.0.93	P1-0-0C	1/18/2023	60% CD	There is a floor drain in the Plumbing Room C008 that does not have sanitary line branch shown to it.	BALA		Open
10.0.94	P1-0-0C	1/18/2023	60% CD	There is a floor drain in TLT C022C that does not have sanitary line shown to it	BALA		Open
10.0.95	P1-0-0C	1/18/2023	60% CD	All 4 floor drains in the Metal Fab Shop C004 do not have sanitary lines shown to it	BALA		Open
10.0.96	P1-0-0D	1/18/2023	60% CD	"Matchline Area-C/Marchline Area-D" to be relocated so it is not in way of description of Sanitary Exit out of the Auto Tech Shop D003	BALA		Open
10.0.97	P1-0-0D	1/18/2023	60% CD	Floor Drain by Water Bubbler in Auto Tech, as well as the Floor Drain in (unlabeled) TLT Room to have sanitary lines shown to it	BALA		Open

Item No.	Ref Drawing.	Date Opened	Document Set	Review Comment	Action by	Comment Response	Status
10.0.98	P1-1-0C	1/18/2023	60% CD	Electric Water Heater's are located in Plumbing Room C008, but call out for it is in the "Generator Panels C007" room. To be relocated. This is in Room C007 right now.	BALA		Open
10.0.99	P1-1-0C	1/18/2023	60% CD	Air Dryer (in Plumbing Room C008) should be sized or specified in some sort.	BALA		Open
10.1.01	P1-1-0C	1/18/2023	60% CD	Plumbing Line from Metal Fab Related CR C018 to Tool Crib C022B is not labeled or sized	BALA		Open
10.1.02	P1-1-0C	1/18/2023	60% CD	What size compressed air line to the Paint Booths?	BALA		Open
10.1.03	P1-1-0C	1/18/2023	60% CD	What size compressed air line to AC18 and AC20?	BALA		Open
10.1.04	P1-1-0C	1/18/2023	60% CD	What size compressed air line to AC07, AC08, and AC05? AC05 and AC08 should have valves?	BALA		Open
10.1.05	P1-1-0C	1/18/2023	60% CD	10" storm line shown in Auto Collision Shop C022 diagrammatically shows it connecting to the Compressed Air Loop.	BALA		Open
10.1.06	P1-1-0C	1/18/2023	60% CD	No water lines shown to Wall Hydrant in Service C022A.	BALA		Open
10.1.07	P1-1-0C	1/18/2023	60% CD	In Metal Fab shop - "Shutoff Valves at as required", should be more specific to note "shutoff valves readily accessible per welding booth"	BALA		Open
10.1.08	P1-1-0C	1/18/2023	60% CD	Gas to paint booths show one line going to paint booth and the other just stops after the valve symbol.	BALA		Open
10.1.09	P1-1-0D	1/18/2023	60% CD	Auto Tech Shop at eastern most side of shop - "interior hose bibb" and "provide wall hydrant" do not show those symbols at those locations, nor does it have any water piping shown to it	BALA		Open
10.1.10	P3-0-1	1/19/2023	60% CD	Detail 1 - "concrete thrust block see detail" needs to be specific as to what detail your referring them to. "Undisturbed earth" is also noted twice	BALA		Open
10.1.11	P3-0-1	1/20/2023	60% CD	Detail 4 - not enough detail. Items are not specified or labeled to refer contractor to the specifications of that piece of equipment. Thermometer on each EWH is not labeled. None of the plumbing lines are sized	BALA		Open
10.1.12	PC-1-1	1/18/2023	60% CD	It looks like there is two water heaters in space (where the cold water line runs through Maintenance Room. Are those meant to be there? Not mentioned in notes associated with room	BALA		Open
10.1.13	PC-1-1	1/18/2023	60% CD	No water lines shown to P-4, exterior water hydrant, and Water Cooler in CB105.	BALA		Open
10.1.14	PC-1-1	1/18/2023	60% CD	For concessions room - all equipment (triple sink, hand sink, grease trap, and floor drain should ALL be shown and labeled/specified in this room. It should also show the plumbing lines to each of these equipment for estimating purposes. If there is a grease trap, we should have location and associated piping with it to show where it's going and where it's leaving.	BALA		Open
10.1.15	PL-1-1	1/18/2023	60% CD	There are dotted lines (presumably vents) that are not sized or labeled, and also floating in space	BALA		Open
10.1.16	PL-1-1	1/18/2023	60% CD	Sump pump is pointed to on drawing but no symbol or size for this sump pump, which would be consistent with the rest of the drawings.	BALA		Open
10.1.17	PM-1-1	1/18/2023	60% CD	Why is undercounter water heater shown on the underslab plan?	BALA		Open
10.1.18	PM-1-1	1/18/2023	60% CD	Vent lines are not labeled or sized in the underslab plan	BALA		Open



Item No.	Ref Drawing.	Date Opened	Document Set	Review Comment	Action by	Comment Response	Status
10.1.19	GENERAL	1/18/2023	60% CD	More often labeling of lines to follow them through the pages would be helpful for anyone reviewing.	BALA		Open
10.1.20	GENERAL	1/18/2023	60% CD	Why are some floor drains labeled and some are not?	BALA		Open
10.1.21	GENERAL	1/18/2023	60% CD	Electric Trap Primers should be utilized on all floor drains.	BALA		Open
10.1.22	GENERAL	1/18/2023	60% CD	All vocational shops that have use of Gas should have an Emergency Power Off that is readily accessible. Each shop should have the ability to shut down the gas at any time with the press of a button for safety of students.	BALA		Open
10.1.23	P-1-1-3B	1/20/2023	60% CD	Per Medical Assisting Programming Meeting on 10/5/22, a separate sink for disposal of urine was indicated to be required in addition to a standard handwashing sink within the "Dirty" room. The Plumbing and Equipment drawings only show 1 sink in this room. Please update drawings to reflect added sink.	BALA/DRA/PLS		Open
10.1.24	P-1-1-1C	1/20/2023	60% CD	Per Early Childhood Programming Meeting on 10/5/22, PMA believes one sink in the "shop space" should be ADA. PMA believes one sink may be used to cleaning art supplies, should a plaster trap be specified for one of these sinks? Please advise if DRA/BALA/PLS do not have the same understanding.	BALA/DRA/PLS		Open
10.1.25	P1-1-1-0D	1/20/2023	60% CD	Per the Auto Tech Programming Meeting on 10/3/22, PMA believes overhead compressed air drops should be provided in the Small Engine room per department leader request, this does not appear to be reflected in the drawing. Please confirm if these need to be added.	BALA		Open
<b>11.0 Fire Protection</b>							
11.0.1	GENERAL	8/19/2022	DD	PMA notes Wakefield Fire Department Chief was happy with the progress of the drawings	BALA		Open
11.0.2	GENERAL	8/19/2022	DD	Sprinkler coverage shown under stairs is suggested	BALA		Open
11.0.3	GENERAL	8/19/2022	DD	If the "Collab" spaces that are off the main corridors have ceiling above that is at a lower elevation than Corridor ceiling, then sprinkler heads should be shown/considered	BALA		Open
11.0.4	GENERAL	8/19/2022	DD	Any exterior "overhangs" should show concealed dry system sprinkler heads.	BALA		Open
11.0.5	GENERAL	8/19/2022	DD	Any vestibules should be reviewed to see if sprinkler heads are required.	BALA		Open
11.0.6	FP1-1-3A	8/19/2022	DD	To the right of the Collab Space 47, there is a sprinkler head shown, but only 1 and no others in this area. BALA to confirm intent.	BALA		Open
11.0.7	FP1-1-3A	8/19/2022	DD	No Sprinkler heads shown in Stairwells	BALA		Open
11.0.8	FP1-1-3A	8/19/2022	DD	Valves to be labeled on this drawing where FD valves are indicated	BALA		Open
11.0.9	FP1-1-3B	8/19/2022	DD	There is a sprinkler head shown in a chase, to the right of the Sped Tutorial room 82. BALA to confirm this is intent	BALA		Open
11.0.10	FP1-1-3B	8/19/2022	DD	Valves to be labeled on this drawing where FD valves are indicated	BALA		Open
11.0.11	FP1-1-3C	8/19/2022	DD	Valves to be labeled on this drawing where FD valves are indicated	BALA		Open
11.0.12	FP1-1-3D	8/19/2022	DD	Valves to be labeled on this drawing where FD valves are indicated	BALA		Open
11.0.13	FP1-1-4A	8/19/2022	DD	Valves to be labeled on this drawing where FD valves are indicated	BALA		Open
11.0.14	FP1-1-4B	8/19/2022	DD	Valves to be labeled on this drawing where FD valves are indicated	BALA		Open
11.0.15	FP1-1-4B	8/19/2022	DD	Sprinkler lay out shown in PLTW/Engineering room, but not in outhur adjacent rooms or any of the classrooms, offices, and utility rooms.	BALA		Open
11.0.16	FP1-1-4C	8/19/2022	DD	Valves to be labeled on this drawing where FD valves are indicated	BALA		Open
11.0.17	FP1-1-4D	8/19/2022	DD	Valves to be labeled in Stairway and northeast corner of this drawing	BALA		Open



Item No.	Ref Drawing.	Date Opened	Document Set	Review Comment	Action by	Comment Response	Status
11.0.18	FP1-1-MC	8/19/2022	DD	Seems like there may be Fire Department valves in the corners of the east side of the drawings, should these be labeled?	BALA		Open
11.0.19	FP1-2-1A	8/19/2022	DD	(2) Fire Department valves on the A Roof that are not labeled or called out on the eastern side of the drawings. BALA to confirm what these items are.	BALA		Open
11.0.20	FP1-2-1A	8/19/2022	DD	(2) Fire Department valves called out on the A Roof. Is this feasible? BALA to confirm this is correct.	BALA		Open
11.0.21	FP1-2-1B	8/19/2022	DD	(2) Fire Department valves located on the roof? Is this feasible? BALA to confirm this is correct.	BALA		Open
11.0.22	FP1-2-1C	8/19/2022	DD	(3) Fire Department valves located on the roof? is this feasible? BALA to confirm that is correct.	BALA		Open
11.0.23	FP6-0-1	8/19/2022	DD	Fire pump piping detail with bypass does not show pipe sizes	BALA		Open
11.0.24	GENERAL	1/20/2023	60% CD	Fire protection drawings require piping to be shown to sprinkler heads on all drawings/levels	BALA		Open
11.0.25	GENERAL	1/20/2023	60% CD	Hatching needs to be adjusted to limit background confusion, suggest cleaner hatching or the background to be overall floor plans.	BALA		Open
11.0.26	GENERAL	1/20/2023	60% CD	Accessories/valves/equipment need to be incorporated onto all drawings.	BALA		Open
11.0.27	GENERAL	1/20/2023	60% CD	Confirm recycling room A109 receives wet line vs dry.	BALA		Open
11.0.28	GENERAL	1/20/2023	60% CD	Media Center area is missing all heads/pipe runs/equipment etc.	BALA		Open
11.0.29	GENERAL	1/20/2023	60% CD	Specific locations require detail callouts on riser diagram, typ.	BALA		Open
<b>12.0 HVAC</b>							
12.0.1	GENERAL	8/19/2022	DD	Registers/diffusers are not located on any plans. Per MSBA guide, ceiling diffusers/registers to be shown	BALA		Open
12.0.2	GENERAL	8/19/2022	DD	Process piping is not shown on plan view, only on riser view. BALA to confirm that is correct	BALA		Open
12.0.3	GENERAL	8/19/2022	DD	No ceiling height's shown on any plan views	BALA		Open
12.0.4	GENERAL	8/19/2022	DD	All toilet rooms should have exhaust duct. BALA to confirm.	BALA		Open
12.0.5	M1-1-0D	8/19/2022	DD	EUH in stair 3 and stair 6 are not labeled or called out	BALA		Open
12.0.6	M1-1-0D	8/19/2022	DD	Welding booths (2) shown, but only 1 of them calls for exhaust ductwork.	BALA		Open
12.0.7	M1-1-0D	8/19/2022	DD	Carbon Monoxide detectors to be labeled in the Auto Tech shop as it is a high risk for Carbon monoxide	BALA		Open
12.0.8	M1-1-1A	8/19/2022	DD	EUH in Dry Storage is not labeled or called out	BALA		Open
12.0.9	M1-1-1A	8/19/2022	DD	EUH in Receiving is not labeled or called out	BALA		Open
12.0.10	M1-1-1A	8/19/2022	DD	Carbon Monoxide detectors to be installed in Receiving area?	BALA		Open
12.0.11	M1-1-1A	8/19/2022	DD	Duct intersections around AHU-7 should show minimum ceiling height	BALA		Open
12.0.12	M1-1-1A	8/19/2022	DD	There is an EUH in the Recycling Room that is not labeled.	BALA		Open
12.0.13	M1-1-1B	8/19/2022	DD	There are "reducers/increasers" for changing ductwork size coming from AHU-4 to the 50" diameter and 60" diameter ductwork that span through the Electrical shop. However, the largest size of ductwork is shown, however what it reduces from is not sized.	BALA		Open
12.0.14	M1-1-1B	8/19/2022	DD	Cosmetology and Theory CR have paragraphs pointing to them that are related to the Cafeteria. Please edit text for appropriate space	BALA		Open
12.0.15	M1-1-1B	8/19/2022	DD	Ductwork in southwestern most portion of drawing (coming from Dry Storage) is not sized	BALA		Open

Item No.	Ref Drawing.	Date Opened	Document Set	Review Comment	Action by	Comment Response	Status
12.0.16	M1-1-1B	8/19/2022	DD	EUH's to be labeled on this drawing	BALA		Open
12.0.17	M1-1-1B	8/19/2022	DD	Are the two 72x72 intake lovers too close to the condensers?	BALA		Open
12.0.18	M1-1-1C	8/19/2022	DD	EUH's to be labeled on this drawing	BALA		Open
12.0.19	M1-1-1C	8/19/2022	DD	Mechanical item (rectangle) in Stair 4 is not labeled or sized	BALA		Open
12.0.20	M1-1-1D	8/19/2022	DD	Ductwork is not sized in Corridor 661 (at the intersection of 16 column line and DD line)	BALA		Open
12.0.21	M1-1-1D	8/19/2022	DD	In Stair 6 "provide wall mounted indoor VRF unit and connec to CU-2" there is not figure there to point to, should there be a symbol there?	BALA		Open
12.0.22	M1-1-1D	8/19/2022	DD	Two mechanical units in Corridor 424 on western most portion of drawing is not labeled or sized.	BALA		Open
12.0.23	M1-1-1D	8/19/2022	DD	Should EUH be in the Shower 552 (girls locker room) since it is in the Boys Locker Room Shower Room?	BALA		Open
12.0.24	M1-1-1D	8/19/2022	DD	EUH's not labeled on the southern most portion of this drawing.	BALA		Open
12.0.25	M1-1-2A	8/19/2022	DD	Ceiling height to be called out at Mechanical 281 where lots of ductwork intersect	BALA		Open
12.0.26	M1-1-2A	8/19/2022	DD	Ceiling height to be called out at intersection of ductwork - for example: the 24x10 and the 36x14 intersenct in Corridor 440	BALA		Open
12.0.27	M1-1-2A	8/19/2022	DD	Duct work in MC Office 118 is not labeled, besides the FCU. What are intentions of the two ductwork items in this room?	BALA		Open
12.0.28	M1-1-2A	8/19/2022	DD	Mechanical units (linear diffusers?) in media center are not labeled.	BALA		Open
12.0.29	M1-1-2A	8/19/2022	DD	Mechanical unit in Stair 2 to be labeled.	BALA		Open
12.0.30	M1-1-2A	8/19/2022	DD	Mechanical unit to the east side of the KEF's is to be labeled.	BALA		Open
12.0.31	M1-1-2C	8/19/2022	DD	if the round items in the northeastern portion of this drawing (Auditorium) are mechanical, they should be labeled and sized.	BALA		Open
12.0.32	M1-1-2C	8/19/2022	DD	FCU's on west side of drawing are not labeled in the Depart Head Rooms or Conference Room 256	BALA		Open
12.0.33	M1-1-2C	8/19/2022	DD	The ductwork inside the chase at the west side of the Upper Auditorium is not sized or deciphered if going up or down.	BALA		Open
12.0.34	M1-1-2D	8/19/2022	DD	The ductwork inside the chase at the northern most part of this drawing is not sized or deciphered if going up or down.	BALA		Open
12.0.35	M1-1-2D	8/19/2022	DD	The ductwork located in Corridor 622 is not sized.	BALA		Open
12.0.36	M1-1-2D	8/19/2022	DD	BALA to confirm that the intent is to have 2 EUH's in the Gym Storage Room. Excessive for a storage room?	BALA		Open
12.0.37	M1-1-3A	8/19/2022	DD	In the chase of the Science Lab, there are 3 ductwork risers that do not show the sizes and if they are going up or down.	BALA		Open
12.0.38	M1-1-3A	8/19/2022	DD	The ductwork that serves the "Size 6 VAV's are not sized.	BALA		Open
12.0.39	M1-1-3B	8/19/2022	DD	Where do 44x16 ductwork's end/where are they going? Intended to end in Storage Room 490 and CR 483?	BALA		Open
12.0.40	M1-1-3C	8/19/2022	DD	Ceiling height to be called out in Mechanical 639 for an understanding of worst case what the ceiling may need to be at ductwork intersections	BALA		Open
12.0.41	M1-1-3D	8/19/2022	DD	Mechanical unit in Corridor 425 (outside of Stair 3) is not labeled or designated.	BALA		Open
12.0.42	M1-1-3D	8/19/2022	DD	None of the ductwork or mechanical equipment are labeled or sized. This is at the north portion of the drawings in the Mechanical Room 639 (outside of Stair 5).	BALA		Open
12.0.43	M1-1-CB	8/19/2022	DD	ACCU and AC should be labeled with # designations in the Mechanical Stadium Elevator	BALA		Open

Item No.	Ref Drawing.	Date Opened	Document Set	Review Comment	Action by	Comment Response	Status
12.0.44	M1-1-CB	8/19/2022	DD	Concession's building should have mechanical equipment labeled with # designations - EUH's, AC unit, and ACCU unit.	BALA		Open
12.0.45	M1-1-CB	8/19/2022	DD	Concession's building should have show ductwork connections to ERV units as scheduled.	BALA		Open
12.0.46	M1-1-CB	8/19/2022	DD	Ductowrk sizes are not specified that are intended for connection to ERV-5	BALA		Open
12.0.47	M1-1-LB	8/19/2022	DD	Locker Room 1st floor units do not have # associated with it, mechanical units should be labeled and designated - all EUH's, one ACCU, and one AC unit.	BALA		Open
12.0.48	M1-1-LB	8/19/2022	DD	Locker Room 2nd floor units should all be labeled - EUH's	BALA		Open
12.0.49	M1-1-LB	8/19/2022	DD	FCU 18-1 and 18-6 are located on top of lockers. Should be relocated	BALA		Open
12.0.50	M1-1-LB	8/19/2022	DD	Locker Room 1st floor - ductwork should make connections to the ERV or at minimum in the same room as unit.	BALA		Open
12.0.51	M1-1-MB	8/19/2022	DD	There is a box that is east of a louver on the west side of the Garage, and that box is not labeled or designated	BALA		Open
12.0.52	M1-1-MB	8/19/2022	DD	Fan is not labeled with a # designation.	BALA		Open
12.0.53	M1-1-MB	8/19/2022	DD	Grille's to be shown (and associated ductwork & sizes) in the bay's	BALA		Open
12.0.54	M2-0-4	8/19/2022	DD	Ductwork sizes shown on HRU 1 and 2, however not shown for HRU 3 and HRU 4	BALA		Open
12.0.55	M2-0-4	8/19/2022	DD	Ductwork size shown on one of the branches of ductwork to RTU-1, however it is not shown on the other branch line.	BALA		Open
12.0.56	M2-0-4	8/19/2022	DD	Ductwork supply/return to be clarified for RTU-1, as the arrows are conflicting as to what exactly is supply and what exactly is return	BALA		Open
12.0.57	M2-0-4	8/19/2022	DD	There is a "SD" that is not assigned to anything to the left of the riser on RTU-1, that should be deleted as Smoke detectors are already captured.	BALA		Open
12.0.58	M2-0-4	8/19/2022	DD	Ductwork sizes for RTU-2 and RTU-3 are not shown.	BALA		Open
12.0.59	M2-0-4	8/19/2022	DD	For RTU-3, there is no duct smoke detector on the supply side of the ductwork. This is not typical compared to the other systems. BALA to confirm this is correct.	BALA		Open
12.0.60	GENERAL	1/20/2023	60% CD	Large scale plans containing AHU's need to be dimensioned to show equipment to scale.	BALA		Open
12.0.61	GENERAL	1/20/2023	60% CD	Duct riser diagrams need to indicté sizing	BALA		Open
12.0.62	GENERAL	1/20/2023	60% CD	Some small ductwork needs final sizing indicated on ductwork drawings (I.E. Classroom A430), typ. comment.	BALA		Open
<b>13.0 Lighting</b>							
<b>14.0 Fire Alarm</b>							
14.0.1	GENERAL	8/19/2022	DD	Drawings/Specs to be updated to show local fire alarm systems for outbuildings per meeting with Wakefield Fire Department on 7/29/22.	BALA		Open
<b>15.0 Electrical</b>							
15.0.1	GENERAL	8/19/2022	DD	If there are automatic flushers or faucets in bathrooms, they will require direct power and/or an outlet.	BALA		Open
15.0.2	GENERAL	8/19/2022	DD	Label EUH's specific #'s	BALA		Open
15.0.3	GENERAL	8/19/2022	DD	EUH's shown on E1-1-OC but not on E1-1-MD, specifically in Stairwells and Boiler Room	BALA		Open
15.0.4	GENERAL	8/19/2022	DD	Power to all the hand dryers	BALA		Open

Item No.	Ref Drawing.	Date Opened	Document Set	Review Comment	Action by	Comment Response	Status
15.0.5	General	8/19/2022	DD	Design team to review all overhang areas and determine with if gutter/heat trace is required to avoid potential impalment situation in winter with icicles forming on roof edge	BALA / DRA		Open
15.0.10	E0-1-2	8/19/2022	DD	Digital Message board notes wiring to "Maintenance Building", suggest to be more specific in the Maintenance Building	BALA		Open
15.0.11	E0-1-3	8/19/2022	DD	To the east side of the tennis courts, there is a handicap ramp that may need illumination for ADA	BALA		Open
15.0.12	E1-1-0C	8/19/2022	DD	There is an outlet in Stairwell 7, but none in Stairwell 6. Confirm intent.	BALA		Open
15.0.13	E1-1-0C	8/19/2022	DD	In Weight Room 0, there is no outlets on the western wall.	BALA		Open
15.0.14	E1-1-0C	8/19/2022	DD	In Cust Workshop 147, there is no outlets in the room.	BALA		Open
15.0.15	E1-1-0C	8/19/2022	DD	In General Supply 275, there is only two outlets at entrance. Being a long room, should there be an outlet at the far end wall?	BALA		Open
15.0.16	E1-1-0C	8/19/2022	DD	One outlet in: IDF Room 216, Plumb Comp Air 211, Elev Mach 548, Elect Main Standby 277, Main Electric Room 279, Cust Storage 146 and Elect Voc 193. Confirm intent.	BALA		Open
15.0.17	E1-1-0C	8/19/2022	DD	In Metal Fab Shop, there are only 2 outlets on knee wall in middle of room, seems like 5 pieces of equipment along this wall. Do they all not require outlets? If not, should there be any outlets on that other side of the wall?	BALA		Open
15.0.18	E1-1-0C	8/19/2022	DD	In Metal Fab Shop, the two walls on the eastern side of the room (north and south walls) have a minimum length of 28' between the outlets. Southern most wall is longer. Confirm intent.	BALA		Open
15.0.19	E1-1-0C	8/19/2022	DD	In Metal Fab Shop, there is an alcove south of the Argon Stor 608, that has no outlets.	BALA		Open
15.0.20	E1-1-0C	8/19/2022	DD	Outlet in Stor 613 is located on a wall, can be mistaken later. Suggest rotating outlet or moving south a little.	BALA		Open
15.0.21	E1-1-0C	8/19/2022	DD	In Office 578, there are only two duplex receptacles scheduled for an office scheduled for 4 people.	BALA		Open
15.0.22	E1-1-0C	8/19/2022	DD	No Outlets on the wall that divides the Main Electric Room and the Boiler Room.	BALA		Open
15.0.23	E1-1-0C	8/19/2022	DD	Conflict of doorway/wall where there are two outlets landing on a wall or door at the Tool Crib 611.	BALA		Open
15.0.24	E1-1-0D	8/19/2022	DD	There is an EPO located outside of the Weights Room 0 and in Corridor 57. Not required in a corridor?	BALA		Open
15.0.25	E1-1-0D	8/19/2022	DD	No Outlets shown in Office 615 of Auto Shop.	BALA		Open
15.0.26	E1-1-MC	8/19/2022	DD	AC Units 2, 3, 4, 5 and 6 not shown.	BALA		Open
15.0.27	E1-1-MC	8/19/2022	DD	EWB's now shown in Boiler Room	BALA		Open
15.0.28	E1-1-1A	8/19/2022	DD	Principal's Office 172 has a meeting table with no outlets nearby. Sped Director Room 132 has one by their meeting table.	BALA		Open
15.0.29	E1-1-1A	8/19/2022	DD	Sped Conference Room 133 has no outlets in Room.	BALA		Open
15.0.30	E1-1-1A	8/19/2022	DD	Mail Room 173 has no outlets in Room or any outlets outside of Mail Room along the bathroom walls.	BALA		Open
15.0.31	E1-1-1A	8/19/2022	DD	Conference Room 180 has no outlets in Room	BALA		Open
15.0.32	E1-1-1A	8/19/2022	DD	Stair 1 has no outlets. Confirm that is intent.	BALA		Open
15.0.33	E1-1-1A	8/19/2022	DD	Locker Room 525 has no outlets.	BALA		Open
15.0.34	E1-1-1A	8/19/2022	DD	No outlets along the sink wall, just south of the Dry Storage Room 528. GFI?	BALA		Open
15.0.35	E1-1-1A	8/19/2022	DD	No Outlets in Dishwash Room 530	BALA		Open

Item No.	Ref Drawing.	Date Opened	Document Set	Review Comment	Action by	Comment Response	Status
15.0.36	E1-1-1A	8/19/2022	DD	There is an outlet in Vestibule 420, but no outlets in Vestibule of Main Entrance/Corridor 577	BALA		Open
15.0.37	E1-1-1A	8/19/2022	DD	No outlets in Disposal Room 535. Confirm that is intent.	BALA		Open
15.0.38	E1-1-1A	8/19/2022	DD	The two outlets in Locker 501 are located in lockers. To be relocated? Lockers 498 and 505 have no outlets.	BALA		Open
15.0.39	E1-1-1A	8/19/2022	DD	Label electrical equipment south of Tool Crib 494	BALA		Open
15.0.40	E1-1-1A	8/19/2022	DD	Office 491 - 3 quad outlets for 5 person Office. One of those outlets is a GFI, which is not required in dry space?	BALA		Open
15.0.41	E1-1-1A	8/19/2022	DD	2 AC's in Plumb Comp Air 212, please confirm that is intent.	BALA		Open
15.0.42	E1-1-1A	8/19/2022	DD	No outlets along back wall of Related CR 503. All outlets are mostly at front of room.	BALA		Open
15.0.43	E1-1-1A	8/19/2022	DD	No outlets in Cafeteria	BALA		Open
15.0.44	E1-1-1A	8/19/2022	DD	No power outlets at Cash Registers of Servery	BALA		Open
15.0.45	E1-1-1A	8/19/2022	DD	No outlets in Servery at all	BALA		Open
15.0.46	E1-1-1A	8/19/2022	DD	No outlets in Kitchen at all	BALA		Open
15.0.47	E1-1-1A	8/19/2022	DD	No outlets in Dish Washing 584	BALA		Open
15.0.48	E1-1-1A	8/19/2022	DD	No outlets in Receiving 66	BALA		Open
15.0.49	E1-1-1A	8/19/2022	DD	No outlets in Recycling Room 145.	BALA		Open
15.0.50	E1-1-1A	8/19/2022	DD	No outlets in Dry Storage 583	BALA		Open
15.0.51	E1-1-1A	8/19/2022	DD	No outlets in Tool Crib 511	BALA		Open
15.0.52	E1-1-1B	8/19/2022	DD	No GFI outlet at Electrical Shop sink in Locker Area 590	BALA		Open
15.0.53	E1-1-1B	8/19/2022	DD	No outlets in Locker Area 590	BALA		Open
15.0.54	E1-1-1B	8/19/2022	DD	Box that is south of LPH-1F and LP-1F should be labeled.	BALA		Open
15.0.55	E1-1-1B	8/19/2022	DD	Both tool cribs for Electrical Shop have no outlets.	BALA		Open
15.0.56	E1-1-1C	8/19/2022	DD	Corridor 621 - lack of outlets? Only one outlet on east side of hallway. An outlet on the southern portion of the decorative bench, but no outlets on northern side of bench	BALA		Open
15.0.57	E1-1-1C	8/19/2022	DD	TLT 647 and TLT 646 should have GFI by the sink, currently on opposite wall	BALA		Open
15.0.58	E1-1-1C	8/19/2022	DD	No outlets in Aud Storage 126	BALA		Open
15.0.59	E1-1-1C	8/19/2022	DD	No outlets in Referee Room 707	BALA		Open
15.0.60	E1-1-1C	8/19/2022	DD	No outlets in Auditorium 124 at all	BALA		Open
15.0.61	E1-1-1C	8/19/2022	DD	No outlets on Stage 125 at all	BALA		Open
15.0.62		8/19/2022	DD	Outlet needed for dishwasher in Kitchen 605	BALA		Open
15.0.63	E1-1-1C	8/19/2022	DD	Creative Play 597 - duplex shown at sink, should be GFI. Another sink in this room with no outlet, should be GFI.	BALA		Open
15.0.64	E1-1-1D	8/19/2022	DD	No outlets in Fitness Room's 0, 568 and 569.	BALA		Open
15.0.65	E1-1-1D	8/19/2022	DD	EUH is not called out/indicated in Stair 3.	BALA		Open
15.0.66	E1-1-1D	8/19/2022	DD	No outlets in Girls Locker 0, Boys Locker 0, Team Locker's 554, 559, 560, 561, 562 and 563	BALA		Open
15.0.67	E1-1-1D	8/19/2022	DD	There is an EUH in Boys Locker Room Shower 564, but there is no EUH in Girls Locker Room Shower 552	BALA		Open
15.0.68	E1-1-1D	8/19/2022	DD	There is a callout of a EUH in TLT 565, however there is no other EUH's in these sorts of bathrooms, as well as it seems to be pointing to a symbol that doesn't look like an EUH. To be confirmed	BALA		Open



Item No.	Ref Drawing.	Date Opened	Document Set	Review Comment	Action by	Comment Response	Status
15.0.69	E1-1-1MA	8/19/2022	DD	The room to the north of the Cafeteria does not have any mechanical units?	BALA		Open
15.0.70	E1-1-1MA	8/19/2022	DD	The southern most portion of the drawings, to the east of the Media Center, shows no indication of Mechanical units. To be completed.	BALA		Open
15.0.71	E1-1-2A	8/19/2022	DD	No outlets in MC Office 118	BALA		Open
15.0.72	E1-1-2A	8/19/2022	DD	There is (3) pieces of equipment (mechanical) that are not labeled/indicated in Science Prep Room	BALA		Open
15.0.73	E1-1-2B	8/19/2022	DD	On the southeastern most portion of the drawing, there is an EUH that is located on the exterior of the building. Right next to that is an outlet that is on the exterior of the building. To confirm that is the intent. Not sure it would belong in Classroom either, as adjacent classrooms do not have an EUH.	BALA		Open
15.0.74	E1-1-2B	8/19/2022	DD	No outlets in Conference Room 256	BALA		Open
15.0.75	E1-1-2B	8/19/2022	DD	Should there be a second GFI outlet in TLT 650 if there is 2 sinks?	BALA		Open
15.0.76	E1-1-2B	8/19/2022	DD	No outlets in Telcom 142	BALA		Open
15.0.77	E1-1-2B	8/19/2022	DD	There is no pull down outlets in Computer Lab's 398 and 399, and the other computer labs have them. Please confirm this is correct. Also, no outlets on east wall of Room 399.	BALA		Open
15.0.78	E1-1-2B	8/19/2022	DD	TLT 521 shows an outlet in a wall chase, to be relocated to sink and inside the room.	BALA		Open
15.0.79	E1-1-2B	8/19/2022	DD	No outlet at Teacher's Desk in Classroom 400	BALA		Open
15.0.80	E1-1-2B	8/19/2022	DD	No outlets in Office 401 and Marketing 441.	BALA		Open
15.0.81	E1-1-2C	8/19/2022	DD	No outlets in Auditorium Controls Room	BALA		Open
15.0.82	E1-1-2D	8/19/2022	DD	There are (2) EUH's serving the same room (Gym Storage 189) please confirm that is the intent. Does storage room need heat at all?	BALA		Open
15.0.83	E1-1-2D	8/19/2022	DD	No mechanical units or outlets shown in the Gymnasium.	BALA		Open
15.0.84	E1-1-0C	1/19/2023	60% CD	Tool Crib C022B shows desks and chairs. Is this going to be a tool crib or a work office? If so, door is opening to a desk with outlet in doorway	BALA		Open
15.0.85	E1-1-0C	1/19/2023	60% CD	No outlets in Cust Workshop C020	BALA		Open
15.0.86	E1-1-0C	1/19/2023	60% CD	EPO in Office C022E is not labeled	BALA		Open
15.0.87	E1-1-0C	1/19/2023	60% CD	Two offices with no outlets (rooms are not labeled) and those rooms are to the east of General Supply C015, across the hallway where desks are shown.	BALA		Open
15.0.88	E1-1-0C	1/19/2023	60% CD	Cust Office C013 only shows 1 outlet and it's a GFI. Does it need to be GFI? And should there be more outlets in office?	BALA		Open
15.0.89	E1-1-0C	1/19/2023	60% CD	Plumbing Room C008 is a "wet room" does this mean GFIs are required? If so, what is currently shown is just a typical outlet.	BALA		Open
15.0.90	E1-1-0D	1/19/2023	60% CD	Small Engine D003H - if the square in the center is a "working table" then there should be a ceiling hung pull down outlet to be able to utilize for that table.	BALA		Open
15.0.91	E1-1-0D	1/19/2023	60% CD	EPO is not labeled to the east of Locker D003B	BALA		Open
15.0.92	E1-1-0D	1/19/2023	60% CD	There is a floating EPO in the corridor North of the Auto Collission Shop. I believe this is incorrectly placed.	BALA		Open
15.0.93	E1-1-1A	1/19/2023	60% CD	There is no outlet at the Attendance A122 station	BALA		Open



Item No.	Ref Drawing.	Date Opened	Document Set	Review Comment	Action by	Comment Response	Status
15.0.94	E1-1-1A	1/19/2023	60% CD	There is no outlets in Conference Room A140.	BALA		Open
15.0.95	E1-1-1A	1/19/2023	60% CD	There is no GFI outlet in Duplicating Room. If this has printer, it will need regular outlet. Shouldn't there be a GFI on countertop backsplash as well as for the fridge?	BALA		Open
15.0.96	E1-1-1A	1/19/2023	60% CD	No outlets in Mail Room A139	BALA		Open
15.0.97	E1-1-1A	1/19/2023	60% CD	No outlets in Sped Conf A138	BALA		Open
15.0.98	E1-1-1A	1/19/2023	60% CD	No outlets in Dish A148K	BALA		Open
15.0.99	E1-1-1A	1/19/2023	60% CD	TLT A143 has a water heater shown in the middle of bathroom path?	BALA		Open
15.1.01	E1-1-1A	1/19/2023	60% CD	Carpentry Shop A141 - EPO's are not labeled	BALA		Open
15.1.02	E1-1-1A	1/19/2023	60% CD	No outlets in Cafeteria	BALA		Open
15.1.03	E1-1-1A	1/19/2023	60% CD	No outlets in Main Kitchen A108	BALA		Open
15.1.04	E1-1-1A	1/19/2023	60% CD	GFI Outlets needed in TLT A106 and TLT A107	BALA		Open
15.1.05	E1-1-1A	1/19/2023	60% CD	GFI Outlet needed on countertop backsplash for kitchenette in Staff Lunch Room	BALA		Open
15.1.06	E1-1-1A	1/19/2023	60% CD	GFI Outlet needed in Dish Washing A108A	BALA		Open
<b>16.0 Technology</b>							
16.0.1	T-1-1-0D	1/20/2023	60% CD	The 75" IFP is currently shown mounted over student work counters in the Small Engine Room within the Auto Tech Shop. The current mounting location may create visibility issues for other students. Please confirm if this screen should be mounted on the East wall of the room or a mobile screen on casters may be considered. Data/power to be adjusted accordingly.	3SI/BALA		Open
<b>17.0 Programming Sheets</b>							
17.0.1	GENERAL	8/19/2022	DD	Confirm additional lockers should not be included in case needed in future.	DRA		Open
17.0.2	GENERAL	8/19/2022	DD	Verify all mounted compressed air is at least 48" AFF	DRA		Open
17.0.3	VOC-02 Automotive Collision	8/19/2022	DD	Design of shop appears to have shifted appropriately in accordance with discussions held at 6/1/22 meeting with staff. Noting for record. At next meeting we should review: Storage access & blasting cabinet size.	No Action Req'd		Record
17.0.4	VOC-03 Auto Tech	8/19/2022	DD	Design of shop appears to have shifted appropriately in accordance with discussions held at 6/2/22 meeting with staff (Provisions for EV, Diesel, exhaust for small engines, 2 tire changers). Noting for record.	No Action Req'd		Record
17.0.5	VOC-04 Business Office Tech.	8/19/2022	DD	Bank - NEMT to confirm with Bank that the project may just provide a shell for them to fit out.	NEMT		Open
17.0.6	VOC-05 Carpentry	8/19/2022	DD	It appears that the design of the shop has shifted significantly as a result of the 6/1/22 meeting with staff. Most changes appear to be in line with discussions (including space for 16-ft cuts, re-arranging equipment, and eliminating floor sweeps); however, can you please clarify why there are now 2 portable planers by the OH door? (Appear to be adding 1?) Also have we lost a row of storage?	DRA		Open
17.0.7	VOC-05 Carpentry	8/19/2022	DD	Has NEMT confirmed that 11'-4" OH door is acceptable?	DRA/NEMT(?)		Open
17.0.8	VOC-05 Carpentry	8/19/2022	DD	Has DRA contacted Dustpipe to discuss dust collection system design?	DRA		Open
17.0.9	VOC-06 Cosmetology	8/19/2022	DD	Need to meet with Staff to review June plans	NEMT		Tracking

Item No.	Ref Drawing.	Date Opened	Document Set	Review Comment	Action by	Comment Response	Status
17.0.10	VOC-07 Culinary Arts	8/19/2022	DD	NEMT staff pleased with layouts as of June 2022; next steps were for NEMT to review internally and get back to the team. Tracking here.	NEMT		Tracking
17.0.11	VOC-08 Dental Asstg	8/19/2022	DD	Has NEMT followed up regarding the size, quantity, and number of A-dec chairs to be purchased outside of the project?	??		Open
17.0.12	VOC-08 Dental Asstg	8/19/2022	DD	Please revise note directly above storage room to only point to chairs on Upper Classmen side for medical grade. School will only use Upper Classmen side in the future.	DRA		Open
17.0.13	VOC-08 Dental Asstg	8/19/2022	DD	Has NEMT followed up regarding the Ultrasonic setup?	DRA		Open
17.0.14	VOC-08 Dental Asstg	8/19/2022	DD	Can you verify how many students can witness demonstrations from X-ray room for next staff meeting? (We should also verify they are happy with flip of X ray and Storage rooms)	DRA		Open
17.0.15	VOC-09 Design & Visual Comm.	8/19/2022	DD	It appears the existing 5,800lb HP Indigo digital press is now reflected as being brought to the new school. NEMT to follow up regarding viability of relocation / potential to trade-in.	NEMT		Tracking
17.0.16	VOC-09 Design & Visual Comm.	8/19/2022	DD	PMA would like to request that DRA take another look at the reception counter / desk. NEMT staff provided "rendering" showing a curved reception counter at 6/1/22 design meeting.	DRA		Open
17.0.17	VOC-11: Early Childhood Education	8/19/2022	DD	PMA would like to continue discussions regarding emergency egress from rooftop playground in event of emergency.	DRA		Open
17.0.18	VOC-12: Electrical	8/19/2022	DD	Please verify that power for all electrical booths need to be on a separate panel in next meeting with staff. Also PMA noted at the 6/2/22 meeting that the shunt trip breakers were not required if the EPOs can shut down the whole shon	DRA		Open
17.0.19	VOC-13: Health Asstg	8/19/2022	DD	Has NEMT confirmed details of 4 long term care beds they plan to bring as discussed at 6/2/22 staff meeting?	DRA/NEMT(?)		Open
17.0.20	VOC-13: Health Asstg	8/19/2022	DD	Has NEMT sent Sim Man spec info as discussed at 6/2/22 staff meeting?	DRA/NEMT(?)		Tracking
17.0.21	VOC-13: Health Asstg	8/19/2022	DD	Has NEMT followed up regarding grant for EKG machine? NEMT noted at 6/2/22 staff meeting that if grant is accepted, 2 EKG machines will be coming over.	DRA/NEMT(?)		Open
17.0.22	VOC-14: HVAC Tech.	8/19/2022	DD	Team discussed maximizing unfinished scope at 6/1/22 design meeting, for students to finish. Can DRA clarify what is left "unfinished" for next design meeting?	DRA		Open
17.0.23	VOC-16: Plumbing & Pipefitting	8/19/2022	DD	Soldering tables appear to have been removed?	DRA		Open
17.0.24	VOC-19 Marketing	8/19/2022	DD	Lab - Can you confirm if sublimation machine is carried per staff request at 6/1/22 meeting?	DRA		Open
<b>18.0 General</b>							
18.0.1	ALL	5/15/2023	90% CD	Update drawings to reflect maintenance building change.	ALL		Open
18.0.2	ALL	5/15/2023	90% CD	Update drawings to reflect cosmetology layout change.	ALL		Open



Gilbane Building Company | J09299.000 - Northeast Metro Tech High School - Wakefield, MA

# Coordination Issues Report

<b>Status</b>	Open	<b>Created By</b>	Kerri Estano Karina Guo
---------------	------	-------------------	----------------------------

**Gilbane Building Company**  
7 Jackson Walkway  
Providence, Rhode Island 02903

P: 401-456-5615

**J09299.000 - Northeast Metro Tech High School -  
Wakefield, MA**  
United States

---

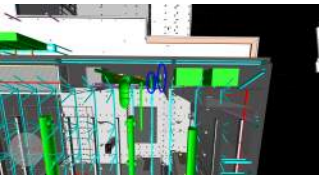
## Issue #415 - Duct vs Arch wall framing and Struc truss layout in conflict

---

<b>Status</b>	<b>Assignee</b>	<b>Due Date</b>	<b>Priority</b>
Open	--	--	Critical
<b>Location</b>	<b>Trade</b>	<b>Type</b>	<b>Source File</b>
--	VDC - DMC - 90	--	NEMT.nwf
<b>Created By</b>	<b>Created Date</b>		
Karina Guo	2023-05-19		

**Description**  
(A1-1-2C, M1-1-2C, S1-1-3C) / IDC CI 366

### Snapshots



---

### Activity

---

**Karina Guo created this issue.**  
*on Friday, May 19, 2023 at 02:52 pm EDT*

---

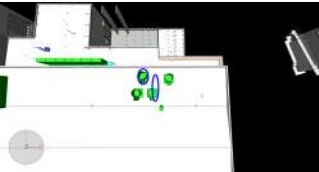
## Issue #416 - Duct & Mech rooftop equipment vs Struc truss layout - C117

---

<b>Status</b>	<b>Assignee</b>	<b>Due Date</b>	<b>Priority</b>
Open	--	--	Critical
<b>Location</b>	<b>Trade</b>	<b>Type</b>	<b>Source File</b>
--	VDC - DMC - 90	--	NEMT.nwf
<b>Created By</b>	<b>Created Date</b>		
Karina Guo	2023-05-19		

**Description**  
(M1-1-2C, M1-1-3C, S1-1-3C)

### Snapshots



---

### Activity

---

**Karina Guo created this issue.**  
*on Friday, May 19, 2023 at 02:52 pm EDT*

---

## Issue #428 - No heating or cooling in Elec Life Safety Rm - D121

---

<b>Status</b>	<b>Assignee</b>	<b>Due Date</b>	<b>Priority</b>
Open	--	--	Critical
<b>Location</b>	<b>Trade</b>	<b>Type</b>	<b>Source File</b>
--	VDC - DMC - 90	--	NEMT.nwf
<b>Created By</b>	<b>Created Date</b>		
Karina Guo	2023-05-23		

**Description**  
Confirm if acceptable/design intent. (M1-1-1D, M1-3-1D)

### Snapshots



---

### Activity

---

**Karina Guo created this issue.**  
*on Tuesday, May 23, 2023 at 09:29 am EDT*



Issue #429 - No heating or cooling to Elec Rm, confirm if acceptable - A312 : critical (M1-1-

<b>Status</b>	<b>Assignee</b>	<b>Due Date</b>	<b>Priority</b>
Open	--	--	Critical
<b>Location</b>	<b>Trade</b>	<b>Type</b>	<b>Source File</b>
--	VDC - DMC - 90	--	NEMT.nwf
<b>Created By</b>	<b>Created Date</b>		
Karina Guo	2023-05-23		

**Description**  
Confirm if acceptable/design intent (M1-1-3A, M1-3-3A)

**Snapshots**



**Activity**

**Karina Guo created this issue.**  
*on Tuesday, May 23, 2023 at 09:29 am EDT*

Issue #430 - No heating or cooling in Elec Main Standby & Life Safety Rms - C005 & C006

Status	Assignee	Due Date	Priority
Open	--	--	Critical
Location	Trade	Type	Source File
--	VDC - DMC - 90	--	NEMT.nwf
Created By	Created Date		
Karina Guo	2023-05-23		

**Description**  
Confirm design intent. (M1-1-0C, M1-3-0C)

Snapshots



Activity

**Karina Guo created this issue.**  
*on Tuesday, May 23, 2023 at 09:29 am EDT*

---

## Issue #431 - No heating or cooling in Elec Life Safety Rm - A203

---

<b>Status</b>	<b>Assignee</b>	<b>Due Date</b>	<b>Priority</b>
Open	--	--	Critical
<b>Location</b>	<b>Trade</b>	<b>Type</b>	<b>Source File</b>
--	VDC - DMC - 90	--	NEMT.nwf
<b>Created By</b>	<b>Created Date</b>		
Karina Guo	2023-05-23		

**Description**  
Confirm design intent. (M1-1-2A, M1-3-2A)

### Snapshots



---

### Activity

---

**Karina Guo created this issue.**  
*on Tuesday, May 23, 2023 at 09:29 am EDT*

---

## Issue #432 - No heating or cooling in Elec Life Safety Rm - B222

---

<b>Status</b>	<b>Assignee</b>	<b>Due Date</b>	<b>Priority</b>
Open	--	--	Critical
<b>Location</b>	<b>Trade</b>	<b>Type</b>	<b>Source File</b>
--	VDC - DMC - 90	--	NEMT.nwf
<b>Created By</b>	<b>Created Date</b>		
Karina Guo	2023-05-23		

**Description**  
Confirm design intent. (M1-1-2B, M1-3-2B)

### Snapshots



---

### Activity

---

**Karina Guo created this issue.**  
*on Tuesday, May 23, 2023 at 09:29 am EDT*

---

## Issue #433 - No heating or cooling in Elec Life Safety Rm - B319

---

<b>Status</b>	<b>Assignee</b>	<b>Due Date</b>	<b>Priority</b>
Open	--	--	Critical
<b>Location</b>	<b>Trade</b>	<b>Type</b>	<b>Source File</b>
--	VDC - DMC - 90	--	NEMT.nwf
<b>Created By</b>	<b>Created Date</b>		
Karina Guo	2023-05-23		

**Description**  
Confirm design intent. (M1-1-3B, M1-3-3B)

### Snapshots



---

### Activity

---

**Karina Guo created this issue.**  
*on Tuesday, May 23, 2023 at 09:29 am EDT*

Issue #434 - No heating or cooling in Elec Amplifier & Life Safety Rm - B417, B415

<b>Status</b>	<b>Assignee</b>	<b>Due Date</b>	<b>Priority</b>
Open	--	--	Critical
<b>Location</b>	<b>Trade</b>	<b>Type</b>	<b>Source File</b>
--	VDC - DMC - 90	--	NEMT.nwf
<b>Created By</b>	<b>Created Date</b>		
Karina Guo	2023-05-23		

**Description**  
Confirm design intent. (M1-1-4B, M1-3-4B)

Snapshots



Activity

**Karina Guo created this issue.**  
*on Tuesday, May 23, 2023 at 09:30 am EDT*



---

## Issue #435 - No heating or cooling in Elec Life Safety Rm - A419

---

<b>Status</b>	<b>Assignee</b>	<b>Due Date</b>	<b>Priority</b>
Open	--	--	Critical
<b>Location</b>	<b>Trade</b>	<b>Type</b>	<b>Source File</b>
--	VDC - DMC - 90	--	NEMT.nwf
<b>Created By</b>	<b>Created Date</b>		
Karina Guo	2023-05-23		

**Description**  
Confirm design intent. (M1-1-4A, M1-3-4A)

### Snapshots



---

### Activity

---

**Karina Guo created this issue.**  
*on Tuesday, May 23, 2023 at 09:30 am EDT*

---

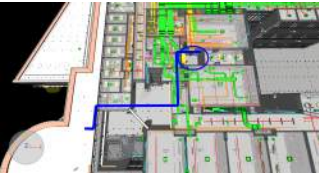
## Issue #426 - No heating or cooling to Elec Rm - A426A

---

<b>Status</b>	<b>Assignee</b>	<b>Due Date</b>	<b>Priority</b>
Open	--	--	Critical
<b>Location</b>	<b>Trade</b>	<b>Type</b>	<b>Source File</b>
--	VDC - DMC - 90	--	NEMT.nwf
<b>Created By</b>	<b>Created Date</b>		
Karina Guo	2023-05-23		

**Description**  
Confirm if acceptable/design intent. (M1-3-4A)

### Snapshots



---

### Activity

---

**Karina Guo created this issue.**  
*on Tuesday, May 23, 2023 at 09:29 am EDT*

---

## Issue #427 - No room tag or heating/cooling to Room - Area A

---

<b>Status</b>	<b>Assignee</b>	<b>Due Date</b>	<b>Priority</b>
Open	--	--	Critical
<b>Location</b>	<b>Trade</b>	<b>Type</b>	<b>Source File</b>
--	VDC - DMC - 90	--	NEMT.nwf
<b>Created By</b>	<b>Created Date</b>		
Karina Guo	2023-05-23		

**Description**  
onfirm if acceptable. (A1-1-3A, M1-1-3A, M1-3-3A)

### Snapshots



---

### Activity

---

**Karina Guo created this issue.**  
*on Tuesday, May 23, 2023 at 09:29 am EDT*

---

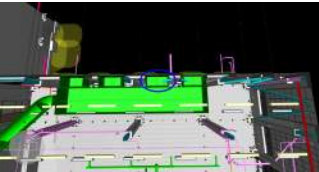
## Issue #417 - Duct vs Struc x-bracing conflict - D003

---

<b>Status</b>	<b>Assignee</b>	<b>Due Date</b>	<b>Priority</b>
Open	--	--	Critical
<b>Location</b>	<b>Trade</b>	<b>Type</b>	<b>Source File</b>
--	VDC - DMC - 90	--	NEMT.nwf
<b>Created By</b>	<b>Created Date</b>		
Karina Guo	2023-05-19		

**Description**  
(A2-1-4, M1-1-0D, S1-1-0MD, S4-0-4)

### Snapshots



---

### Activity

---

**Karina Guo created this issue.**  
*on Friday, May 19, 2023 at 02:52 pm EDT*

---

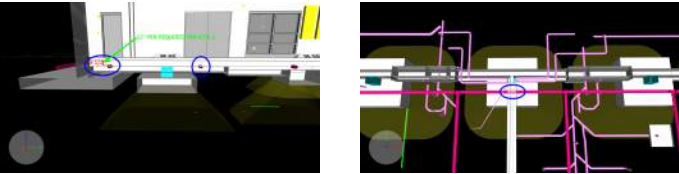
## Issue #424 - Underslab drainage in conflict with Struc footing

---

<b>Status</b>	<b>Assignee</b>	<b>Due Date</b>	<b>Priority</b>
Open	--	--	Critical
<b>Location</b>	<b>Trade</b>	<b>Type</b>	<b>Source File</b>
--	VDC - DMC - 90	--	NEMT.nwf
<b>Created By</b>	<b>Created Date</b>		
Karina Guo	2023-05-22		

**Description**  
Not modeled per system requirements. (GT-0-1, GT-0-2, S1-1-0D, S1-1-1B)

### Snapshots



---

### Activity

---

**Karina Guo created this issue.**  
*on Monday, May 22, 2023 at 11:12 am EDT*

---

## Issue #422 - Confirm beam pens possible for pitched pipe - Area A

---

<b>Status</b>	<b>Assignee</b>	<b>Due Date</b>	<b>Priority</b>
Open	--	--	Critical
<b>Location</b>	<b>Trade</b>	<b>Type</b>	<b>Source File</b>
--	VDC - DMC - 90	--	NEMT.nwf
<b>Created By</b>	<b>Created Date</b>		
Karina Guo	2023-05-19		

**Description**  
(P1-1-1A, S1-1-2A, A8-1-1A)

### Snapshots



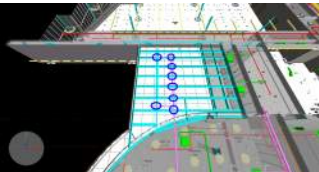
---

### Activity

---

**Karina Guo created this issue.**  
*on Friday, May 19, 2023 at 02:52 pm EDT*

**Karina Guo**  
*on Friday, May 19, 2023 at 03:04 pm EDT*



---

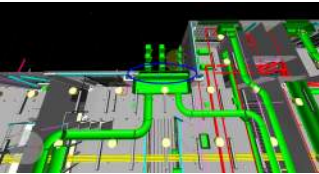
## Issue #421 - Arch Louver & Duct vs Struc x-bracing - B103

---

<b>Status</b>	<b>Assignee</b>	<b>Due Date</b>	<b>Priority</b>
Open	--	--	Critical
<b>Location</b>	<b>Trade</b>	<b>Type</b>	<b>Source File</b>
--	VDC - DMC - 90	--	NEMT.nwf
<b>Created By</b>	<b>Created Date</b>		
Karina Guo	2023-05-19		

**Description**  
(A2-1-6, M1-1-1B, S1-1-2B, S4-0-3)

### Snapshots



---

### Activity

---

**Karina Guo created this issue.**  
*on Friday, May 19, 2023 at 02:52 pm EDT*

---

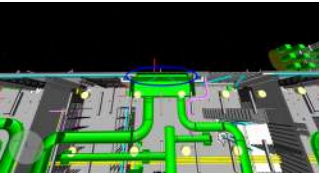
## Issue #420 - Arch Louver & Duct vs Struc x-bracing - B101

---

<b>Status</b>	<b>Assignee</b>	<b>Due Date</b>	<b>Priority</b>
Open	--	--	Critical
<b>Location</b>	<b>Trade</b>	<b>Type</b>	<b>Source File</b>
--	VDC - DMC - 90	--	NEMT.nwf
<b>Created By</b>	<b>Created Date</b>		
Karina Guo	2023-05-19		

**Description**  
(A2-1-6, M1-1-1B, S1-1-2B, S4-0-2)

### Snapshots



---

### Activity

---

**Karina Guo created this issue.**  
*on Friday, May 19, 2023 at 02:52 pm EDT*

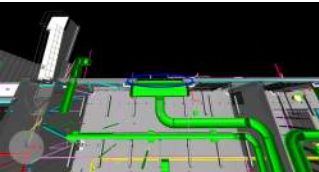


Issue #419 - Duct vs Struc x-bracing conflict - A141: critical (A2-1-6, M1-1-1A, S1-1-2A, S4-

<b>Status</b>	<b>Assignee</b>	<b>Due Date</b>	<b>Priority</b>
Open	--	--	Critical
<b>Location</b>	<b>Trade</b>	<b>Type</b>	<b>Source File</b>
--	VDC - DMC - 90	--	NEMT.nwf
<b>Created By</b>	<b>Created Date</b>		
Karina Guo	2023-05-19		

**Description**  
(A2-1-6, M1-1-1A, S1-1-2A, S4-0-2)

Snapshots



Activity

**Karina Guo created this issue.**  
*on Friday, May 19, 2023 at 02:52 pm EDT*

---

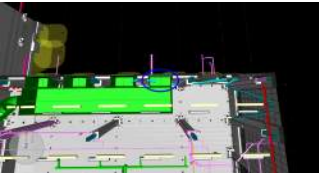
## Issue #418 - Duct vs Struc x-bracing conflict & missing Arch louver - D003

---

<b>Status</b>	<b>Assignee</b>	<b>Due Date</b>	<b>Priority</b>
Open	--	--	Critical
<b>Location</b>	<b>Trade</b>	<b>Type</b>	<b>Source File</b>
--	VDC - DMC - 90	--	NEMT.nwf
<b>Created By</b>	<b>Created Date</b>		
Karina Guo	2023-05-19		

**Description**  
(A2-1-4, M1-1-0D, S1-1-0MD, S4-0-4)

### Snapshots



---

### Activity

---

**Karina Guo created this issue.**  
*on Friday, May 19, 2023 at 02:52 pm EDT*

---

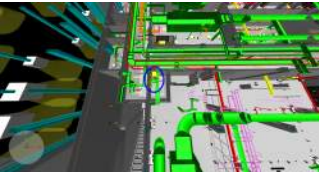
## Issue #411 - Elec equipment located in double height space - M003A

---

<b>Status</b>	<b>Assignee</b>	<b>Due Date</b>	<b>Priority</b>
Open	--	--	Critical
<b>Location</b>	<b>Trade</b>	<b>Type</b>	<b>Source File</b>
--	VDC - DMC - 90	--	NEMT.nwf
<b>Created By</b>	<b>Created Date</b>		
Karina Guo	2023-05-19		

**Description**  
need confirmation equip fits in Elec Room(A1-1-0MD, E1-1-0M)

### Snapshots



---

### Activity

---

**Karina Guo created this issue.**  
*on Friday, May 19, 2023 at 02:52 pm EDT*

---

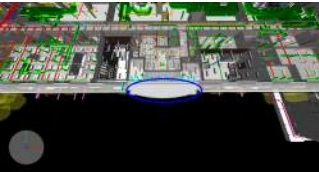
## Issue #412 - Drains shown on Arch drawings, not sown on Plumbing

---

<b>Status</b>	<b>Assignee</b>	<b>Due Date</b>	<b>Priority</b>
Open	--	--	Critical
<b>Location</b>	<b>Trade</b>	<b>Type</b>	<b>Source File</b>
--	VDC - DMC - 90	--	NEMT.nwf
<b>Created By</b>	<b>Created Date</b>		
Karina Guo	2023-05-19		

**Description**  
(A1-1-2B, P-1-1-2B)

### Snapshots



---

### Activity

---

**Karina Guo created this issue.**  
*on Friday, May 19, 2023 at 02:52 pm EDT*

---

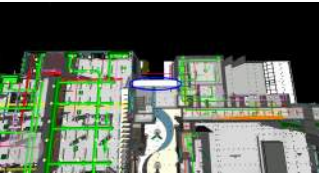
## Issue #413 - Drains shown on Arch drawings, not sown on Plumbing

---

<b>Status</b>	<b>Assignee</b>	<b>Due Date</b>	<b>Priority</b>
Open	--	--	Critical
<b>Location</b>	<b>Trade</b>	<b>Type</b>	<b>Source File</b>
--	VDC - DMC - 90	--	NEMT.nwf
<b>Created By</b>	<b>Created Date</b>		
Karina Guo	2023-05-19		

**Description**  
(A1-1-2C, P-1-1-1C)

### Snapshots



---

### Activity

---

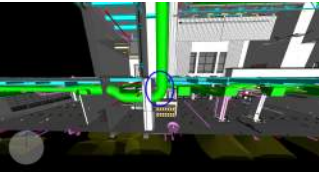
**Karina Guo created this issue.**  
*on Friday, May 19, 2023 at 02:52 pm EDT*

Issue #414 - Duct vs Arch wall framing & slab opening, no rated enclosure - C022 : critical (

<b>Status</b>	<b>Assignee</b>	<b>Due Date</b>	<b>Priority</b>
Open	--	--	Critical
<b>Location</b>	<b>Trade</b>	<b>Type</b>	<b>Source File</b>
--	VDC - DMC - 90	--	NEMT.nwf
<b>Created By</b>	<b>Created Date</b>		
Karina Guo	2023-05-19		

**Description**  
(A1-1-0C, A1-0-12, M1-1-0C) / IDC CI 366

Snapshots



Activity

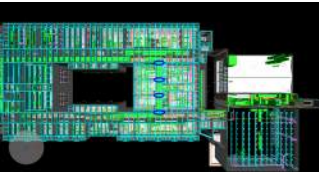
Karina Guo created this issue.  
on Friday, May 19, 2023 at 02:52 pm EDT

Issue #407 - Duct not coordinated with Arch ceiling height, Struc framing & other MEPs - B312

Status	Assignee	Due Date	Priority
Open	--	--	High
Location	Trade	Type	Source File
--	VDC - DMC - 90	--	NEMT.nwf
Created By	Created Date		
Karina Guo	2023-05-19		

Description  
(A8-1-3B, S1-1-4B, M1-1-3B)

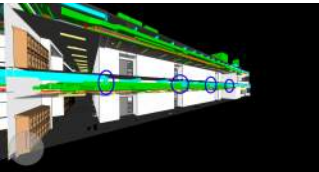
Snapshots



Activity

Karina Guo created this issue.  
on Friday, May 19, 2023 at 01:57 pm EDT

Karina Guo  
on Friday, May 19, 2023 at 02:40 pm EDT



---

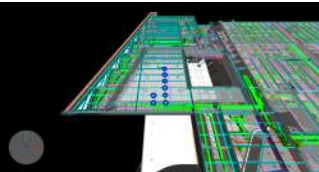
# Issue #408 - Duct, Arch ceiling height & Struc framing not coordinated - A114

---

<b>Status</b>	<b>Assignee</b>	<b>Due Date</b>	<b>Priority</b>
Open	--	--	High
<b>Location</b>	<b>Trade</b>	<b>Type</b>	<b>Source File</b>
--	VDC - DMC - 90	--	NEMT.nwf
<b>Created By</b>	<b>Created Date</b>		
Karina Guo	2023-05-19		

**Description**  
Need to account for duct insulation & steel fireproofing. (A8-1-1A, S1-1-2A, M1-1-1A)

## Snapshots



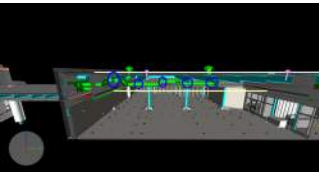
---

## Activity

---

**Karina Guo created this issue.**  
*on Friday, May 19, 2023 at 01:57 pm EDT*

**Karina Guo**  
*on Friday, May 19, 2023 at 02:42 pm EDT*





Issue #409 - Struc footing and FP water entry in conflict, 4'-0" min coverage needed - Area B

Status	Assignee	Due Date	Priority
Open	--	--	High
Location	Trade	Type	Source File
--	VDC - DMC - 90	--	NEMT.nwf
Created By	Created Date		
Karina Guo	2023-05-19		

Description  
(FP1-1-1B, S1-1-1B)

Snapshots



Activity

Karina Guo created this issue.  
on Friday, May 19, 2023 at 01:58 pm EDT

---

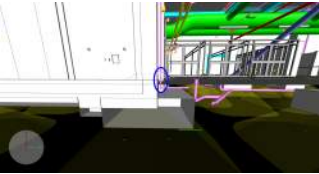
## Issue #410 - Plmb vent stack in conflict with Struc foundation - Area B

---

<b>Status</b>	<b>Assignee</b>	<b>Due Date</b>	<b>Priority</b>
Open	--	--	High
<b>Location</b>	<b>Trade</b>	<b>Type</b>	<b>Source File</b>
--	VDC - DMC - 90	--	NEMT.nwf
<b>Created By</b>	<b>Created Date</b>		
Karina Guo	2023-05-19		

**Description**  
None

### Snapshots



---

### Activity

---

**Karina Guo created this issue.**  
*on Friday, May 19, 2023 at 01:58 pm EDT*

---

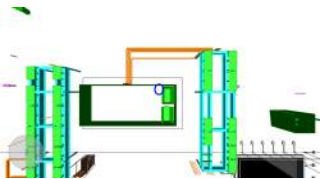
## Issue #389 - Plmb vent vs Mechanical RTU - Roof

---

<b>Status</b>	<b>Assignee</b>	<b>Due Date</b>	<b>Priority</b>
Open	--	--	High
<b>Location</b>	<b>Trade</b>	<b>Type</b>	<b>Source File</b>
--	VDC - DMC - 90	--	NEMT.nwf
<b>Created By</b>	<b>Created Date</b>		
Karina Guo	2023-05-19		

**Description**  
(M1-2-1A, P1-2-1A)

### Snapshots



---

### Activity

---

**Karina Guo created this issue.**  
*on Friday, May 19, 2023 at 01:57 pm EDT*

---

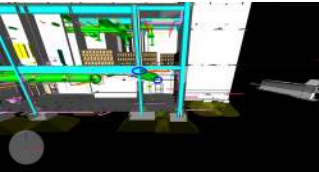
## Issue #390 - Duct vs Struc framing & Arch overhead door track - D003

---

<b>Status</b>	<b>Assignee</b>	<b>Due Date</b>	<b>Priority</b>
Open	--	--	High
<b>Location</b>	<b>Trade</b>	<b>Type</b>	<b>Source File</b>
--	VDC - DMC - 90	--	NEMT.nwf
<b>Created By</b>	<b>Created Date</b>		
Karina Guo	2023-05-19		

**Description**  
(A1-1-0D, M1-1-0D)

### Snapshots



---

### Activity

---

**Karina Guo created this issue.**  
*on Friday, May 19, 2023 at 01:57 pm EDT*

---

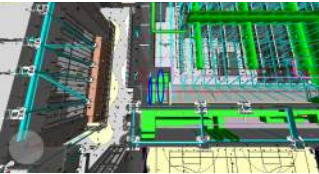
## Issue #391 - Duct vs Struc truss layout

---

<b>Status</b>	<b>Assignee</b>	<b>Due Date</b>	<b>Priority</b>
Open	--	--	High
<b>Location</b>	<b>Trade</b>	<b>Type</b>	<b>Source File</b>
--	VDC - DMC - 90	--	NEMT.nwf
<b>Created By</b>	<b>Created Date</b>		
Karina Guo	2023-05-19		

**Description**  
(M1-1-2C, S1-1-3C)

### Snapshots



---

### Activity

---

**Karina Guo created this issue.**  
*on Friday, May 19, 2023 at 01:57 pm EDT*

---

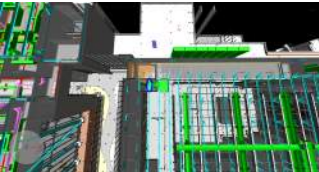
## Issue #392 - Duct vs Struc truss layout

---

<b>Status</b>	<b>Assignee</b>	<b>Due Date</b>	<b>Priority</b>
Open	--	--	High
<b>Location</b>	<b>Trade</b>	<b>Type</b>	<b>Source File</b>
--	VDC - DMC - 90	--	NEMT.nwf
<b>Created By</b>	<b>Created Date</b>		
Karina Guo	2023-05-19		

**Description**  
(M1-1-2C, S1-1-3C)

### Snapshots



---

### Activity

---

**Karina Guo created this issue.**  
*on Friday, May 19, 2023 at 01:57 pm EDT*

---

## Issue #393 - Duct vs Struc truss layout

---

<b>Status</b>	<b>Assignee</b>	<b>Due Date</b>	<b>Priority</b>
Open	--	--	High
<b>Location</b>	<b>Trade</b>	<b>Type</b>	<b>Source File</b>
--	VDC - DMC - 90	--	NEMT.nwf
<b>Created By</b>	<b>Created Date</b>		
Karina Guo	2023-05-19		

**Description**  
(M1-1-2C, S1-1-3C)

### Snapshots



---

### Activity

---

**Karina Guo created this issue.**  
*on Friday, May 19, 2023 at 01:57 pm EDT*

---

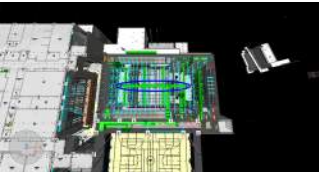
## Issue #394 - Duct vs Struc truss layout - C117

---

<b>Status</b>	<b>Assignee</b>	<b>Due Date</b>	<b>Priority</b>
Open	--	--	High
<b>Location</b>	<b>Trade</b>	<b>Type</b>	<b>Source File</b>
--	VDC - DMC - 90	--	NEMT.nwf
<b>Created By</b>	<b>Created Date</b>		
Karina Guo	2023-05-19		

**Description**  
(M1-1-2C, S1-1-3C)

### Snapshots



---

### Activity

---

**Karina Guo created this issue.**  
*on Friday, May 19, 2023 at 01:57 pm EDT*



---

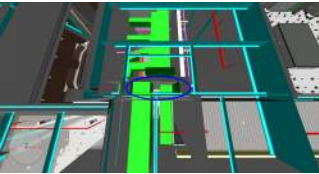
## Issue #395 - Duct vs Arch wall framing and Struc framing

---

<b>Status</b>	<b>Assignee</b>	<b>Due Date</b>	<b>Priority</b>
Open	--	--	High
<b>Location</b>	<b>Trade</b>	<b>Type</b>	<b>Source File</b>
--	VDC - DMC - 90	--	NEMT.nwf
<b>Created By</b>	<b>Created Date</b>		
Karina Guo	2023-05-19		

**Description**  
(A1-1-1C, A4-1-2, M1-1-1C, S1-1-2C)

### Snapshots



---

### Activity

---

**Karina Guo created this issue.**  
*on Friday, May 19, 2023 at 01:57 pm EDT*

Issue #396 - Elec panel locations not coordinated with Food Service drawings - A148

Status	Assignee	Due Date	Priority
Open	--	--	High
Location	Trade	Type	Source File
--	VDC - DMC - 90	--	NEMT.nwf
Created By	Created Date		
Karina Guo	2023-05-19		

Description  
(E1-1-1A, FS1-3-1)

Snapshots



Activity

Karina Guo created this issue.  
on Friday, May 19, 2023 at 01:57 pm EDT

Issue #397 - Elec panel locations not coordinated with Food Service drawings - A108

Status	Assignee	Due Date	Priority
Open	--	--	High
Location	Trade	Type	Source File
--	VDC - DMC - 90	--	NEMT.nwf
Created By	Created Date		
Karina Guo	2023-05-19		

Description  
(E1-1-1A, FS1-2-1)

Snapshots



Activity

Karina Guo created this issue.  
on Friday, May 19, 2023 at 01:57 pm EDT

---

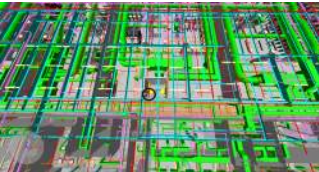
## Issue #398 - Foreign system (Plumbing ST) in Elec Rm - B108

---

<b>Status</b>	<b>Assignee</b>	<b>Due Date</b>	<b>Priority</b>
Open	--	--	High
<b>Location</b>	<b>Trade</b>	<b>Type</b>	<b>Source File</b>
--	VDC - DMC - 90	--	NEMT.nwf
<b>Created By</b>	<b>Created Date</b>		
Karina Guo	2023-05-19		

**Description**  
(P1-1-1B)

### Snapshots



---

### Activity

---

**Karina Guo created this issue.**  
*on Friday, May 19, 2023 at 01:57 pm EDT*

---

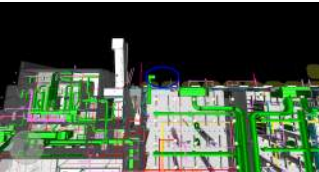
## Issue #399 - Pad required for existing dust collector?

---

<b>Status</b>	<b>Assignee</b>	<b>Due Date</b>	<b>Priority</b>
Open	--	--	High
<b>Location</b>	<b>Trade</b>	<b>Type</b>	<b>Source File</b>
--	VDC - DMC - 90	--	NEMT.nwf
<b>Created By</b>	<b>Created Date</b>		
Karina Guo	2023-05-19		

**Description**  
(M1-1-1A)

### Snapshots



---

### Activity

---

**Karina Guo created this issue.**  
*on Friday, May 19, 2023 at 01:57 pm EDT*

---

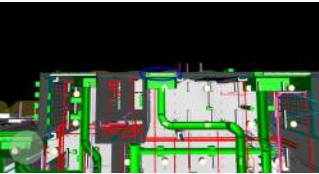
## Issue #400 - Arch louver vs Duct size conflict - B104

---

<b>Status</b>	<b>Assignee</b>	<b>Due Date</b>	<b>Priority</b>
Open	--	--	High
<b>Location</b>	<b>Trade</b>	<b>Type</b>	<b>Source File</b>
--	VDC - DMC - 90	--	NEMT.nwf
<b>Created By</b>	<b>Created Date</b>		
Karina Guo	2023-05-19		

**Description**  
(A2-1-6, A6-3-1, M1-1-1B)

### Snapshots



---

### Activity

---

**Karina Guo created this issue.**  
*on Friday, May 19, 2023 at 01:57 pm EDT*

---

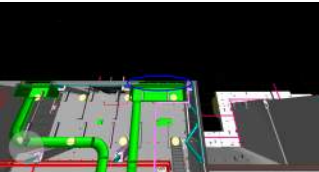
# Issue #401 - Arch louver vs Duct size conflict - B104

---

<b>Status</b>	<b>Assignee</b>	<b>Due Date</b>	<b>Priority</b>
Open	--	--	High
<b>Location</b>	<b>Trade</b>	<b>Type</b>	<b>Source File</b>
--	VDC - DMC - 90	--	NEMT.nwf
<b>Created By</b>	<b>Created Date</b>		
Karina Guo	2023-05-19		

**Description**  
(A2-1-6, A6-3-1, M1-1-1B)

## Snapshots



---

## Activity

---

**Karina Guo created this issue.**  
*on Friday, May 19, 2023 at 01:57 pm EDT*

---

## Issue #425 - Underslab drainage routed under structural zone of influence

---

<b>Status</b>	<b>Assignee</b>	<b>Due Date</b>	<b>Priority</b>
Open	--	--	High
<b>Location</b>	<b>Trade</b>	<b>Type</b>	<b>Source File</b>
--	VDC - DMC - 90	--	NEMT.nwf
<b>Created By</b>	<b>Created Date</b>		
Karina Guo	2023-05-22		

**Description**  
(GT-0-1, S1-1-0C, S1-1-0D)

### Snapshots



---

### Activity

---

**Karina Guo created this issue.**  
*on Monday, May 22, 2023 at 11:17 am EDT*



---

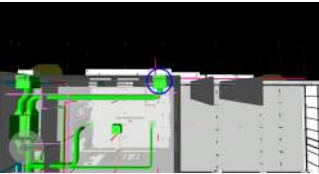
# Issue #402 - Arch louver vs Duct size conflict - C106

---

<b>Status</b>	<b>Assignee</b>	<b>Due Date</b>	<b>Priority</b>
Open	--	--	High
<b>Location</b>	<b>Trade</b>	<b>Type</b>	<b>Source File</b>
--	VDC - DMC - 90	--	NEMT.nwf
<b>Created By</b>	<b>Created Date</b>		
Karina Guo	2023-05-19		

**Description**  
(A2-1-5, A6-3-1, M1-1-1C)

## Snapshots



---

## Activity

---

**Karina Guo created this issue.**  
*on Friday, May 19, 2023 at 01:57 pm EDT*

**Karina Guo**  
*on Friday, May 19, 2023 at 02:29 pm EDT*



---

## Issue #403 - Arch louver vs Duct size conflict - C106G

---

<b>Status</b>	<b>Assignee</b>	<b>Due Date</b>	<b>Priority</b>
Open	--	--	High
<b>Location</b>	<b>Trade</b>	<b>Type</b>	<b>Source File</b>
--	VDC - DMC - 90	--	NEMT.nwf
<b>Created By</b>	<b>Created Date</b>		
Karina Guo	2023-05-19		

**Description**  
(A2-1-5, A6-3-1, M1-1-1C)

### Snapshots



---

### Activity

---

**Karina Guo created this issue.**  
*on Friday, May 19, 2023 at 01:57 pm EDT*

**Karina Guo**  
*on Friday, May 19, 2023 at 02:32 pm EDT*



---

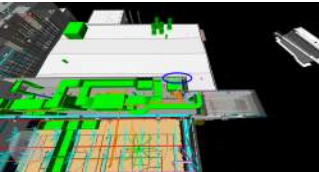
## Issue #404 - Missing Arch louver at Duct Exhaust Air - C302

---

<b>Status</b>	<b>Assignee</b>	<b>Due Date</b>	<b>Priority</b>
Open	--	--	High
<b>Location</b>	<b>Trade</b>	<b>Type</b>	<b>Source File</b>
--	VDC - DMC - 90	--	NEMT.nwf
<b>Created By</b>	<b>Created Date</b>		
Karina Guo	2023-05-19		

**Description**  
(A2-1-5, M2-0-3)

### Snapshots



---

### Activity

---

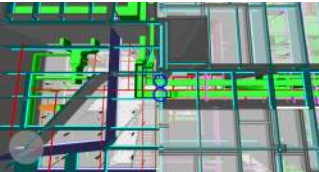
**Karina Guo created this issue.**  
*on Friday, May 19, 2023 at 01:57 pm EDT*

# Issue #405 - Duct, Lighting, Arch ceiling height & Struc framing not coordinated - A119

<b>Status</b>	<b>Assignee</b>	<b>Due Date</b>	<b>Priority</b>
Open	--	--	High
<b>Location</b>	<b>Trade</b>	<b>Type</b>	<b>Source File</b>
--	VDC - DMC - 90	--	NEMT.nwf
<b>Created By</b>	<b>Created Date</b>		
Karina Guo	2023-05-19		

**Description**  
(A8-1-1A, S1-1-2A, M1-1-1A, E2-1-1A)

## Snapshots



## Activity

**Karina Guo created this issue.**  
*on Friday, May 19, 2023 at 01:57 pm EDT*

**Karina Guo**  
*on Friday, May 19, 2023 at 02:37 pm EDT*



**Karina Guo**  
*on Friday, May 19, 2023 at 02:37 pm EDT*



---

# Issue #406 - Duct, Arch ceiling height & Struc framing not coordinated - A212

---

<b>Status</b>	<b>Assignee</b>	<b>Due Date</b>	<b>Priority</b>
Open	--	--	High
<b>Location</b>	<b>Trade</b>	<b>Type</b>	<b>Source File</b>
--	VDC - DMC - 90	--	NEMT.nwf
<b>Created By</b>	<b>Created Date</b>		
Karina Guo	2023-05-19		

**Description**  
(A8-1-2A, S1-1-3A, M1-1-2A)

## Snapshots

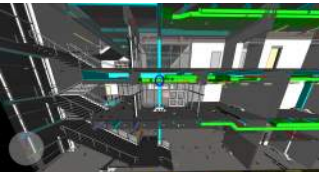


---

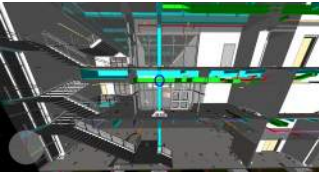
## Activity

**Karina Guo created this issue.**  
*on Friday, May 19, 2023 at 01:57 pm EDT*

**Karina Guo**  
*on Friday, May 19, 2023 at 02:39 pm EDT*



**Karina Guo**  
*on Friday, May 19, 2023 at 02:39 pm EDT*

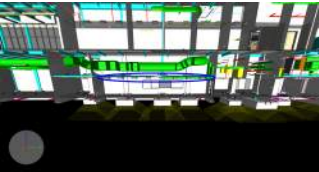


Issue #384 - Recessed lights (RB-1) with no ceiling to host to and exposed duct below slab.

Status	Assignee	Due Date	Priority
Open	--	--	Medium
Location	Trade	Type	Source File
--	VDC - DMC - 90	--	NEMT.nwf
Created By	Created Date		
Karina Guo	2023-05-19		

**Description**  
D003D. Please confirm design intent. (A8-1-0D, E2-1-0D, E4-0-19, M1-1-0D)

Snapshots



Activity

**Karina Guo created this issue.**  
*on Friday, May 19, 2023 at 01:09 pm EDT*

---

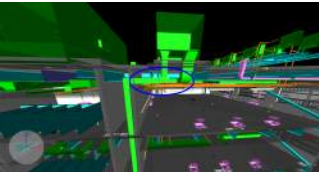
## Issue #382 - Mech RTU/MEPFP ceiling conflicts - A425

---

<b>Status</b>	<b>Assignee</b>	<b>Due Date</b>	<b>Priority</b>
Open	--	--	Medium
<b>Location</b>	<b>Trade</b>	<b>Type</b>	<b>Source File</b>
--	VDC - DMC - 90	--	NEMT.nwf
<b>Created By</b>	<b>Created Date</b>		
Karina Guo	2023-05-19		

**Description**  
(A8-1-4A, M1-1-4A, M1-3-4A, M1-2-1A, E1-1-4A, P1-1-4A, FP1-1-4A)

### Snapshots



---

### Activity

---

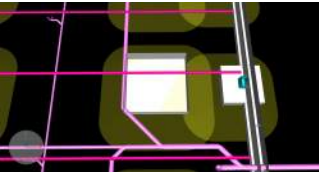
**Karina Guo created this issue.**  
*on Friday, May 19, 2023 at 01:09 pm EDT*

# Issue #423 - Underslab drainage in conflict with Struc footing

<b>Status</b> Open	<b>Assignee</b> --	<b>Due Date</b> --	<b>Priority</b> Medium
<b>Location</b> --	<b>Trade</b> VDC - DMC - 90	<b>Type</b> --	<b>Source File</b> NEMT.nwf
<b>Created By</b> Karina Guo	<b>Created Date</b> 2023-05-22		

**Description**  
Design parameters not achievable. Note: Typical issue throughout underground

## Snapshots



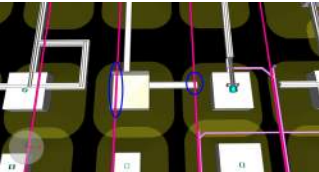
## Activity

**Karina Guo created this issue.**  
*on Monday, May 22, 2023 at 09:50 am EDT*

**Karina Guo**  
*on Monday, May 22, 2023 at 09:50 am EDT*

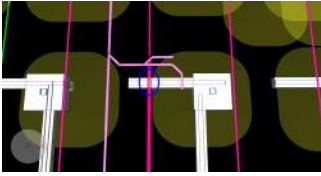


**Karina Guo**  
*on Monday, May 22, 2023 at 09:52 am EDT*



**Karina Guo**  
*on Monday, May 22, 2023 at 09:52 am EDT*

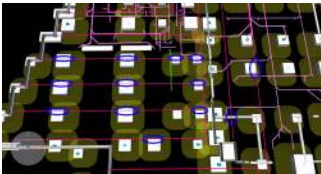




**Karina Guo**  
*on Monday, May 22, 2023 at 09:53 am EDT*



**Karina Guo**  
*on Monday, May 22, 2023 at 09:53 am EDT*



---

## Issue #383 - Plmb in conflict with wall, additional chase needed (~1') - Area B

---

<b>Status</b>	<b>Assignee</b>	<b>Due Date</b>	<b>Priority</b>
Open	--	--	Medium
<b>Location</b>	<b>Trade</b>	<b>Type</b>	<b>Source File</b>
--	VDC - DMC - 90	--	NEMT.nwf
<b>Created By</b>	<b>Created Date</b>		
Karina Guo	2023-05-19		

**Description**  
(P1-0-0B, S1-1-1B)

### Snapshots



---

### Activity

---

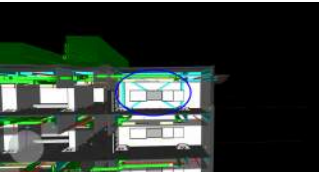
**Karina Guo created this issue.**  
*on Friday, May 19, 2023 at 01:09 pm EDT*

Issue #387 - Exposed Struc x-bracing (BF-A5), please confirm if this is design  
intwnt - A429

<b>Status</b>	<b>Assignee</b>	<b>Due Date</b>	<b>Priority</b>
Open	--	--	Medium
<b>Location</b>	<b>Trade</b>	<b>Type</b>	<b>Source File</b>
--	VDC - DMC - 90	--	NEMT.nwf
<b>Created By</b>	<b>Created Date</b>		
Karina Guo	2023-05-19		

**Description**  
please confirm if this is design intent(A1-1-4A, S1-1-5A, S4-0-1)

Snapshots



Activity

**Karina Guo created this issue.**  
*on Friday, May 19, 2023 at 01:09 pm EDT*

---

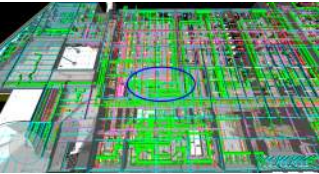
## Issue #381 - Service access path required? - M101

---

<b>Status</b>	<b>Assignee</b>	<b>Due Date</b>	<b>Priority</b>
Open	--	--	Medium
<b>Location</b>	<b>Trade</b>	<b>Type</b>	<b>Source File</b>
--	VDC - DMC - 90	--	NEMT.nwf
<b>Created By</b>	<b>Created Date</b>		
Karina Guo	2023-05-19		

**Description**  
(A1-1-1MA, M2-0-1)

### Snapshots



---

### Activity

---

**Karina Guo created this issue.**  
*on Friday, May 19, 2023 at 01:09 pm EDT*

---

## Issue #380 - No detail provided for custom millwork benches - A146 & B111

---

<b>Status</b>	<b>Assignee</b>	<b>Due Date</b>	<b>Priority</b>
Open	--	--	Medium
<b>Location</b>	<b>Trade</b>	<b>Type</b>	<b>Source File</b>
--	VDC - DMC - 90	--	NEMT.nwf
<b>Created By</b>	<b>Created Date</b>		
Karina Guo	2023-05-19		

**Description**  
(A1-1-1A, A1-1-1B)

### Snapshots



---

### Activity

---

**Karina Guo created this issue.**  
*on Friday, May 19, 2023 at 01:09 pm EDT*

Issue #388 - Plmb associated with sink locations not coordinated with Arch windows.

Status	Assignee	Due Date	Priority
Open	--	--	Medium
Location	Trade	Type	Source File
--	VDC - DMC - 90	--	NEMT.nwf
Created By	Created Date		
Karina Guo	2023-05-19		

Description  
A209, A318 & A425(A1-1-2A, A1-1-3A, A1-1-4A, P1-1-2A)

Snapshots



Activity

Karina Guo created this issue.  
on Friday, May 19, 2023 at 01:09 pm EDT

---

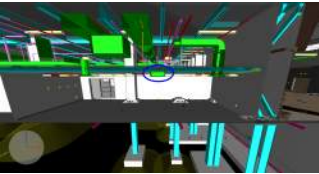
## Issue #379 - Mech FCU 3-1 vs Struct precast plank & Arch ceiling (4") - B104G

---

<b>Status</b>	<b>Assignee</b>	<b>Due Date</b>	<b>Priority</b>
Open	--	--	Medium
<b>Location</b>	<b>Trade</b>	<b>Type</b>	<b>Source File</b>
--	VDC - DMC - 90	--	NEMT.nwf
<b>Created By</b>	<b>Created Date</b>		
Karina Guo	2023-05-19		

**Description**  
(A8-1-1B, S1-1-1MB, M1-1-1B)

### Snapshots



---

### Activity

---

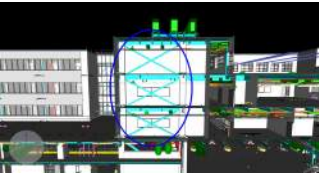
**Karina Guo created this issue.**  
*on Friday, May 19, 2023 at 01:09 pm EDT*

Issue #385 - Exposed Struc x-bracing & framing through Arch walls (BF-B9) - B212, B310, B410

<b>Status</b>	<b>Assignee</b>	<b>Due Date</b>	<b>Priority</b>
Open	--	--	Medium
<b>Location</b>	<b>Trade</b>	<b>Type</b>	<b>Source File</b>
--	VDC - DMC - 90	--	NEMT.nwf
<b>Created By</b>	<b>Created Date</b>		
Karina Guo	2023-05-19		

**Description**  
(A1-1-2B, A1-1-3B, A1-1-4B, S1-1-3B, S1-1-4B, S1-1-5B, S4-0-2)

Snapshots



Activity

**Karina Guo created this issue.**  
*on Friday, May 19, 2023 at 01:09 pm EDT*

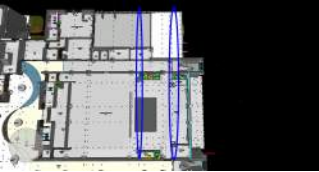


Issue #457 - Slight discrepancies between Arch and Struct grid lines JJ.5 & MM.8 - Area C & D

<b>Status</b>	<b>Assignee</b>	<b>Due Date</b>	<b>Priority</b>
Open	--	--	--
<b>Location</b>	<b>Trade</b>	<b>Type</b>	<b>Source File</b>
--	VDC - DMC - 90	--	NEMT.nwf
<b>Created By</b>	<b>Created Date</b>		
Kerri Estano	2023-05-23		

**Description**  
JJ.5 off by 3/8" and MM.8 off by 5/16" (A1-0-11, S1-1-1C)

Snapshots



Activity

Kerri Estano created this issue.  
on Tuesday, May 23, 2023 at 01:43 pm EDT

---

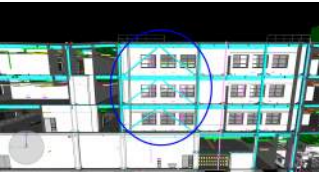
## Issue #386 - Exposed Struc x-bracing (SW-A5BF-X) - A209, A318 & A425

---

<b>Status</b>	<b>Assignee</b>	<b>Due Date</b>	<b>Priority</b>
Open	--	--	--
<b>Location</b>	<b>Trade</b>	<b>Type</b>	<b>Source File</b>
--	--	--	NEMT.nwf
<b>Created By</b>	<b>Created Date</b>		
Karina Guo	2023-05-19		

**Description**  
please confirm if this is design intent (A1-1-2A, A1-1-3A, A1-1-4A, S1-1-3A, S1-1-4A, S1-1-5A, S4-0-5)

### Snapshots



---

### Activity

---

**Karina Guo created this issue.**  
*on Friday, May 19, 2023 at 01:09 pm EDT*

---

## Issue #449 - RGD locations do not align with ceiling grids - Typ. issue throughout building

---

<b>Status</b>	<b>Assignee</b>	<b>Due Date</b>	<b>Priority</b>
Open	--	--	--
<b>Location</b>	<b>Trade</b>	<b>Type</b>	<b>Source File</b>
--	VDC - DMC - 90	--	NEMT.nwf
<b>Created By</b>	<b>Created Date</b>		
Kerri Estano	2023-05-23		

**Description**  
None

### Snapshots



---

### Activity

---

**Kerri Estano created this issue.**  
*on Tuesday, May 23, 2023 at 01:17 pm EDT*

---

# Issue #450 - Discrepancies between steel in Arch model vs Structural model - Typ. issue

---

<b>Status</b>	<b>Assignee</b>	<b>Due Date</b>	<b>Priority</b>
Open	--	--	--
<b>Location</b>	<b>Trade</b>	<b>Type</b>	<b>Source File</b>
--	VDC - DMC - 90	--	NEMT.nwf
<b>Created By</b>	<b>Created Date</b>		
Kerri Estano	2023-05-23		

**Description**  
throughout building

## Snapshots



---

## Activity

---

**Kerri Estano created this issue.**  
*on Tuesday, May 23, 2023 at 01:18 pm EDT*

---

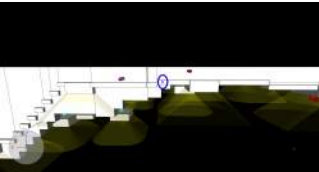
## Issue #452 - Plmb in conflict with Struc footing - Area B

---

<b>Status</b> Open	<b>Assignee</b> --	<b>Due Date</b> --	<b>Priority</b> High
<b>Location</b> Main Building>00 - Undergrou...	<b>Trade</b> VDC - DMC - 90	<b>Type</b> --	<b>Source File</b> NEMT.nwf
<b>Created By</b> Kerri Estano	<b>Created Date</b> 2023-05-23		

**Description**  
(S1-1-1B, P1-0-0B)

### Snapshots



---

### Activity

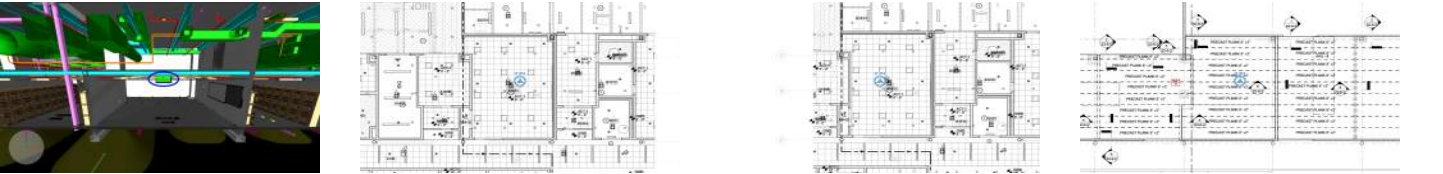
---

**Kerri Estano created this issue.**  
*on Tuesday, May 23, 2023 at 01:34 pm EDT*

# Issue #376 - Mech FCU 3-6 vs Struct precast plank & Arch ceiling (4") - A141C

<b>Status</b>	<b>Assignee</b>	<b>Due Date</b>	<b>Priority</b>
Open	--	--	Medium
<b>Location</b>	<b>Trade</b>	<b>Type</b>	<b>Source File</b>
Main Building>01 - Ground FL...	VDC - DMC - 90	--	NEMT.nwf
<b>Created By</b>	<b>Created Date</b>		
Karina Guo	2023-05-19		
<b>Description</b>			
None			

## Snapshots



## Linked Items

<b>RFI</b>	<b>Drawings</b>	<b>Observation</b>
	<a href="#">M1-1-1B: MECHANICAL DUC...</a>	
	<a href="#">S1-1-1MB: MEZZANINE FLO...</a>	
	<a href="#">S1-1-1MA: MEZZANINE FLO...</a>	
	<a href="#">A8-1-1B: FIRST FLOOR REFL...</a>	
	<a href="#">A8-1-1A: FIRST FLOOR REFL...</a>	

## Activity

Karina Guo created this issue.  
on Friday, May 19, 2023 at 01:09 pm EDT

# Issue #375 - Elec panel located at Arch half height wall - A141

<b>Status</b>	<b>Assignee</b>	<b>Due Date</b>	<b>Priority</b>
Open	--	--	Medium
<b>Location</b>	<b>Trade</b>	<b>Type</b>	<b>Source File</b>
Main Building>01 - Ground Fl...	VDC - DMC - 90	--	NEMT.nwf
<b>Created By</b>	<b>Created Date</b>		
Karina Guo	2023-05-19		

**Description**  
None

## Snapshots



## Linked Items

<b>RFI</b>	<b>Drawings</b>	<b>Observation</b>
	<a href="#">E1-1-1A: ELECTRICAL POWE...</a>	
	<a href="#">A1-1-1A: FIRST FLOOR PLA...</a>	

## Activity

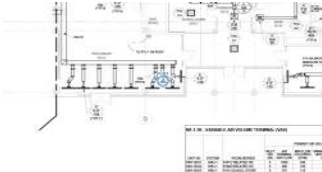
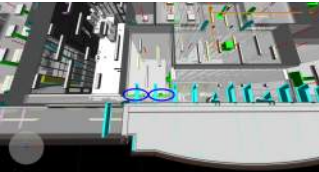
**Karina Guo created this issue.**  
on Friday, May 19, 2023 at 01:09 pm EDT

# Issue #373 - Linear diffusers vs Struc framing - B113

<b>Status</b>	<b>Assignee</b>	<b>Due Date</b>	<b>Priority</b>
Open	--	--	Medium
<b>Location</b>	<b>Trade</b>	<b>Type</b>	<b>Source File</b>
Main Building>01 - Ground Fl...	VDC - DMC - 90	--	NEMT.nwf
<b>Created By</b>	<b>Created Date</b>		
Karina Guo	2023-05-19		

**Description**  
None

## Snapshots



## Linked Items

<b>RFI</b>	<b>Drawings</b>	<b>Observation</b>
	<a href="#">S1-1-2B: SECOND FLOOR F...</a>	
	<a href="#">M1-1-1B: MECHANICAL DUC...</a>	

## Activity

**Karina Guo created this issue.**  
on Friday, May 19, 2023 at 01:09 pm EDT



Issue #377 - Mech FCU 3-5 vs Struct precast plank & Arch ceiling (4") - B103E

<b>Status</b>	<b>Assignee</b>	<b>Due Date</b>	<b>Priority</b>
Open	--	--	Medium
<b>Location</b>	<b>Trade</b>	<b>Type</b>	<b>Source File</b>
Main Building>01 - Ground FL...	VDC - DMC - 90	--	NEMT.nwf
<b>Created By</b>	<b>Created Date</b>		
Karina Guo	2023-05-19		

**Description**  
None

Snapshots



Linked Items

<b>RFI</b>	<b>Drawings</b>	<b>Observation</b>
	<a href="#">A8-1-1B: FIRST FLOOR REFL...</a>	
	<a href="#">S1-1-1MB: MEZZANINE FLO...</a>	
	<a href="#">M1-1-1B: MECHANICAL DUC...</a>	

Activity

Karina Guo created this issue.  
on Friday, May 19, 2023 at 01:09 pm EDT

# Issue #372 - FA panel located at Arch door - B101

<b>Status</b>	<b>Assignee</b>	<b>Due Date</b>	<b>Priority</b>
Open	--	--	Medium
<b>Location</b>	<b>Trade</b>	<b>Type</b>	<b>Source File</b>
Main Building>01 - Ground Fl...	VDC - DMC - 90	--	NEMT.nwf
<b>Created By</b>	<b>Created Date</b>		
Karina Guo	2023-05-19		

**Description**  
multiple devices located at other side of door.

## Snapshots



## Linked Items

<b>RFI</b>	<b>Drawings</b>	<b>Observation</b>
	<a href="#">A1-1-1A: FIRST FLOOR PLA...</a>	
	<a href="#">FA1-1-1B: FIRE ALARM FIRS...</a>	
	<a href="#">FA1-1-1A: FIRE ALARM FIRS...</a>	

## Activity

**Karina Guo created this issue.**  
on Friday, May 19, 2023 at 01:09 pm EDT

Issue #378 - Mech FCU 3-3 vs Struct precast plank & Arch ceiling (4") - B101E

<b>Status</b>	<b>Assignee</b>	<b>Due Date</b>	<b>Priority</b>
Open	--	--	Medium
<b>Location</b>	<b>Trade</b>	<b>Type</b>	<b>Source File</b>
Main Building>01 - Ground Fl...	VDC - DMC - 90	--	NEMT.nwf
<b>Created By</b>	<b>Created Date</b>		
Karina Guo	2023-05-19		
<b>Description</b>			
None			

Snapshots



Linked Items

<b>RFI</b>	<b>Drawings</b>	<b>Observation</b>
	<a href="#">S1-1-1MB: MEZZANINE FLO...</a>	
	<a href="#">M1-1-1B: MECHANICAL DUC...</a>	
	<a href="#">A8-1-1B: FIRST FLOOR REFL...</a>	

Activity

Karina Guo created this issue.  
on Friday, May 19, 2023 at 01:09 pm EDT

---

## Issue #451 - Plmb vent not connected to underground system - A141B

---

<b>Status</b>	<b>Assignee</b>	<b>Due Date</b>	<b>Priority</b>
Open	--	--	--
<b>Location</b>	<b>Trade</b>	<b>Type</b>	<b>Source File</b>
Main Building>01 - Ground Fl...	VDC - DMC - 90	--	NEMT.nwf
<b>Created By</b>	<b>Created Date</b>		
Kerri Estano	2023-05-23		

**Description**  
(P1-0-0A)

### Snapshots



---

### Activity

---

**Kerri Estano created this issue.**  
*on Tuesday, May 23, 2023 at 01:33 pm EDT*

# Issue #371 - FA panel located at Arch curtain wall - B218G

<b>Status</b>	<b>Assignee</b>	<b>Due Date</b>	<b>Priority</b>
Open	--	--	Medium
<b>Location</b>	<b>Trade</b>	<b>Type</b>	<b>Source File</b>
Main Building>02 - Second Fl...	VDC - DMC - 90	--	NEMT.nwf
<b>Created By</b>	<b>Created Date</b>		
Karina Guo	2023-05-19		

**Description**  
None

## Snapshots



## Linked Items

<b>RFI</b>	<b>Drawings</b>	<b>Observation</b>
	<a href="#">FA1-1-2B: FIRE ALARM SEC...</a>	
	<a href="#">A1-1-2B: SECOND FLOOR P...</a>	

## Activity

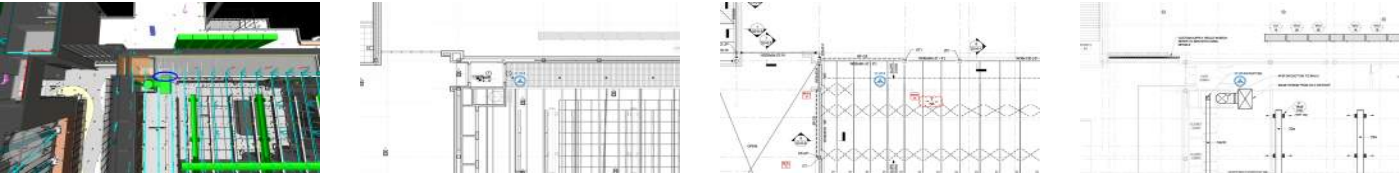
**Karina Guo created this issue.**  
on Friday, May 19, 2023 at 01:09 pm EDT

# Issue #374 - Duct vs Arch soffit framing & baffles - C202

<b>Status</b>	<b>Assignee</b>	<b>Due Date</b>	<b>Priority</b>
Open	--	--	Medium
<b>Location</b>	<b>Trade</b>	<b>Type</b>	<b>Source File</b>
Main Building>02 - Second Fl...	VDC - DMC - 90	--	NEMT.nwf
<b>Created By</b>	<b>Created Date</b>		
Karina Guo	2023-05-19		

**Description**  
None

## Snapshots



## Linked Items

<b>RFI</b>	<b>Drawings</b>	<b>Observation</b>
	<a href="#">M1-1-2C: MECHANICAL DUC...</a>	
	<a href="#">S1-1-3C: THIRD FLOOR FRA...</a>	
	<a href="#">A8-1-2C: SECOND FLOOR R...</a>	

## Activity

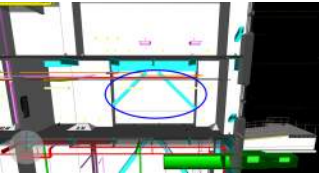
**Karina Guo created this issue.**  
on Friday, May 19, 2023 at 01:09 pm EDT

Issue #453 - Exposed Struc x-bracing (BF-A17), please confirm if this is design intent- A260F

<b>Status</b>	<b>Assignee</b>	<b>Due Date</b>	<b>Priority</b>
Open	--	--	--
<b>Location</b>	<b>Trade</b>	<b>Type</b>	<b>Source File</b>
Main Building>02 - Second Fl...	VDC - DMC - 90	--	NEMT.nwf
<b>Created By</b>	<b>Created Date</b>		
Kerri Estano	2023-05-23		

**Description**  
(A1-1-2A, S1-1-3A, S4-0-2)

Snapshots



Activity

**Kerri Estano created this issue.**  
*on Tuesday, May 23, 2023 at 01:35 pm EDT*

# Issue #370 - Duct vs Arch wall framing - C201

<b>Status</b>	<b>Assignee</b>	<b>Due Date</b>	<b>Priority</b>
Open	--	--	Medium
<b>Location</b>	<b>Trade</b>	<b>Type</b>	<b>Source File</b>
Main Building>03 - Third Floor	VDC - DMC - 90	--	NEMT.nwf
<b>Created By</b>	<b>Created Date</b>		
Karina Guo	2023-05-19		
<b>Description</b>			
None			

## Snapshots



## Linked Items

<b>RFI</b>	<b>Drawings</b>	<b>Observation</b>
	<a href="#">M1-1-3D: MECHANICAL DU...</a>	
	<a href="#">A8-1-3D: THIRD FLOOR REF...</a>	

## Activity

**Karina Guo created this issue.**  
on Friday, May 19, 2023 at 01:09 pm EDT



# Issue #456 - FP Main, Arch ceiling height in model & Struc framing not coordinated - Area C

<b>Status</b>	<b>Assignee</b>	<b>Due Date</b>	<b>Priority</b>
Open	--	--	--
<b>Location</b>	<b>Trade</b>	<b>Type</b>	<b>Source File</b>
Main Building>03 - Third Floor	VDC - DMC - 90	--	NEMT.nwf
<b>Created By</b>	<b>Created Date</b>		
Kerri Estano	2023-05-23		

**Description**  
Ceiling height not provided in CDs. (A8-1-3C, S1-1-4C, FP1-1-3C)

## Snapshots



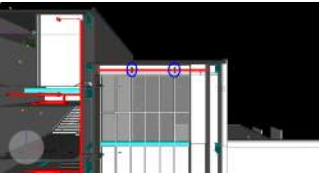
## Activity

**Kerri Estano created this issue.**  
on Tuesday, May 23, 2023 at 01:40 pm EDT

**Kerri Estano**  
on Tuesday, May 23, 2023 at 01:40 pm EDT



**Kerri Estano**  
on Tuesday, May 23, 2023 at 01:40 pm EDT



Issue #454 - Exposed Struc x-bracing (BF-A16), please confirm if this is design intent - A401

<b>Status</b>	<b>Assignee</b>	<b>Due Date</b>	<b>Priority</b>
Open	--	--	--
<b>Location</b>	<b>Trade</b>	<b>Type</b>	<b>Source File</b>
Main Building>04 - Fourth Floor	VDC - DMC - 90	--	NEMT.nwf
<b>Created By</b>	<b>Created Date</b>		
Kerri Estano	2023-05-23		

**Description**  
(A1-1-4A, S1-1-5A, S4-0-2)

Snapshots



Activity

**Kerri Estano created this issue.**  
*on Tuesday, May 23, 2023 at 01:36 pm EDT*

---

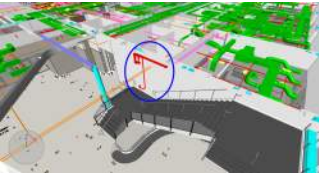
## Issue #455 - Exposed FDV and gate valve at Lobby stairs - A119

---

<b>Status</b>	<b>Assignee</b>	<b>Due Date</b>	<b>Priority</b>
Open	--	--	--
<b>Location</b>	<b>Trade</b>	<b>Type</b>	<b>Source File</b>
Main Building>04 - Fourth Floor	VDC - DMC - 90	--	NEMT.nwf
<b>Created By</b>	<b>Created Date</b>		
Kerri Estano	2023-05-23		

**Description**  
(FP1-1-1A)

### Snapshots



---

### Activity

---

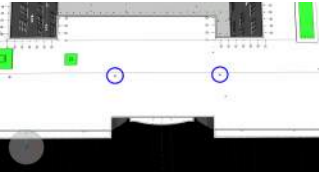
**Kerri Estano created this issue.**  
*on Tuesday, May 23, 2023 at 01:39 pm EDT*

Issue #437 - Roof drain location discrepancies between Arch & Plumbing drawings - Area B

<b>Status</b> Open	<b>Assignee</b> --	<b>Due Date</b> --	<b>Priority</b> Critical
<b>Location</b> Main Building>05 - Roof	<b>Trade</b> VDC - DMC - 90	<b>Type</b> --	<b>Source File</b> NEMT.nwf
<b>Created By</b> Kerri Estano	<b>Created Date</b> 2023-05-23		

**Description**  
(A1-2-1B, P1-2-1B)

Snapshots



Activity

**Kerri Estano created this issue.**  
*on Tuesday, May 23, 2023 at 12:50 pm EDT*

---

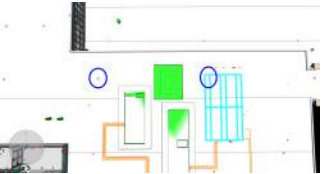
# Issue #440 - Roof drain location discrepancies between Arch & Plumbing drawings - Area D

---

<b>Status</b>	<b>Assignee</b>	<b>Due Date</b>	<b>Priority</b>
Open	--	--	Critical
<b>Location</b>	<b>Trade</b>	<b>Type</b>	<b>Source File</b>
Main Building>05 - Roof	VDC - DMC - 90	--	NEMT.nwf
<b>Created By</b>	<b>Created Date</b>		
Kerri Estano	2023-05-23		

**Description**  
(A1-2-1D, P1-1-4D)

## Snapshots



---

## Activity

---

**Kerri Estano created this issue.**  
*on Tuesday, May 23, 2023 at 01:05 pm EDT*

Issue #445 - Roof drain quantity & location discrepancies between Arch & Plumbing drawings

<b>Status</b> Open	<b>Assignee</b> --	<b>Due Date</b> --	<b>Priority</b> Critical
<b>Location</b> Main Building>05 - Roof	<b>Trade</b> VDC - DMC - 90	<b>Type</b> --	<b>Source File</b> NEMT.nwf
<b>Created By</b> Kerri Estano	<b>Created Date</b> 2023-05-23		

**Description**  
Area B (A1-2-1B, P1-1-2B)

Snapshots



Activity

**Kerri Estano created this issue.**  
*on Tuesday, May 23, 2023 at 01:08 pm EDT*

---

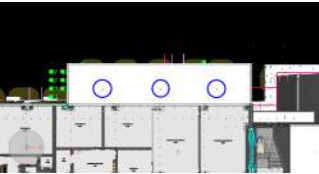
## Issue #444 - Roof drain location discrepancies between Arch & Plumbing drawings - Area B

---

<b>Status</b> Open	<b>Assignee</b> --	<b>Due Date</b> --	<b>Priority</b> Critical
<b>Location</b> Main Building>05 - Roof	<b>Trade</b> VDC - DMC - 90	<b>Type</b> --	<b>Source File</b> NEMT.nwf
<b>Created By</b> Kerri Estano	<b>Created Date</b> 2023-05-23		

**Description**  
(A1-2-1B, P1-1-2B)

### Snapshots



---

### Activity

---

**Kerri Estano created this issue.**  
*on Tuesday, May 23, 2023 at 01:07 pm EDT*

---

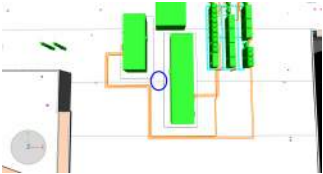
# Issue #439 - Roof drain quantity discrepancy between Arch & Plumbing drawings - Area D

---

<b>Status</b>	<b>Assignee</b>	<b>Due Date</b>	<b>Priority</b>
Open	--	--	Critical
<b>Location</b>	<b>Trade</b>	<b>Type</b>	<b>Source File</b>
Main Building>05 - Roof	VDC - DMC - 90	--	NEMT.nwf
<b>Created By</b>	<b>Created Date</b>		
Kerri Estano	2023-05-23		

**Description**  
(A1-2-1D, P1-1-4D)

## Snapshots



---

## Activity

---

**Kerri Estano created this issue.**  
*on Tuesday, May 23, 2023 at 01:00 pm EDT*



---

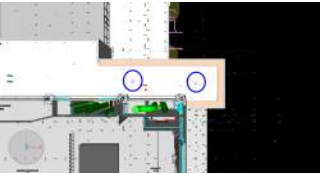
## Issue #443 - Roof drain location discrepancies between Arch & Plumbing drawings - Area C

---

<b>Status</b> Open	<b>Assignee</b> --	<b>Due Date</b> --	<b>Priority</b> Critical
<b>Location</b> Main Building>05 - Roof	<b>Trade</b> VDC - DMC - 90	<b>Type</b> --	<b>Source File</b> NEMT.nwf
<b>Created By</b> Kerri Estano	<b>Created Date</b> 2023-05-23		

**Description**  
(A1-2-1C, P1-1-2C)

### Snapshots



---

### Activity

---

**Kerri Estano created this issue.**  
*on Tuesday, May 23, 2023 at 01:07 pm EDT*

---

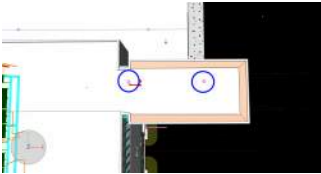
## Issue #438 - Roof drain location discrepancies between Arch & Plumbing drawings - Area D

---

<b>Status</b>	<b>Assignee</b>	<b>Due Date</b>	<b>Priority</b>
Open	--	--	Critical
<b>Location</b>	<b>Trade</b>	<b>Type</b>	<b>Source File</b>
Main Building>05 - Roof	VDC - DMC - 90	--	NEMT.nwf
<b>Created By</b>	<b>Created Date</b>		
Kerri Estano	2023-05-23		

**Description**  
(A1-2-1D, P1-1-4D)

### Snapshots



---

### Activity

---

**Kerri Estano created this issue.**  
*on Tuesday, May 23, 2023 at 01:00 pm EDT*

---

## Issue #442 - Roof drain location discrepancy between Arch & Plumbing drawings - Area D

---

<b>Status</b> Open	<b>Assignee</b> --	<b>Due Date</b> --	<b>Priority</b> Critical
<b>Location</b> Main Building>05 - Roof	<b>Trade</b> VDC - DMC - 90	<b>Type</b> --	<b>Source File</b> NEMT.nwf
<b>Created By</b> Kerri Estano	<b>Created Date</b> 2023-05-23		

**Description**  
(A1-2-1D, P1-1-3D)

### Snapshots



---

### Activity

---

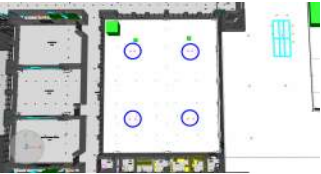
**Kerri Estano created this issue.**  
*on Tuesday, May 23, 2023 at 01:06 pm EDT*

Issue #441 - Roof drain quantity & location discrepancies between Arch & Plumbing drawings

<b>Status</b> Open	<b>Assignee</b> --	<b>Due Date</b> --	<b>Priority</b> Critical
<b>Location</b> Main Building>05 - Roof	<b>Trade</b> VDC - DMC - 90	<b>Type</b> --	<b>Source File</b> NEMT.nwf
<b>Created By</b> Kerri Estano	<b>Created Date</b> 2023-05-23		

**Description**  
Area B (A1-2-1B, P1-1-4B)

Snapshots



Activity

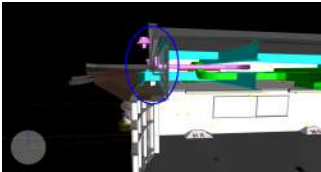
**Kerri Estano created this issue.**  
*on Tuesday, May 23, 2023 at 01:06 pm EDT*

Issue #448 - Eyebrow roof drain conflict with Structural and Architectural - Areas A & B

<b>Status</b>	<b>Assignee</b>	<b>Due Date</b>	<b>Priority</b>
Open	--	--	Critical
<b>Location</b>	<b>Trade</b>	<b>Type</b>	<b>Source File</b>
Main Building>05 - Roof	VDC - DMC - 90	--	NEMT.nwf
<b>Created By</b>	<b>Created Date</b>		
Kerri Estano	2023-05-23		

**Description**  
(A1-2-1A, A1-2-1A, P1-2-1A, P1-2-1B)

Snapshots



Activity

**Kerri Estano created this issue.**  
*on Tuesday, May 23, 2023 at 01:15 pm EDT*

**Kerri Estano**  
*on Tuesday, May 23, 2023 at 01:15 pm EDT*



---

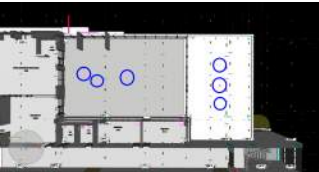
## Issue #447 - Roof drain quantity & location discrepancies between Arch & Plumbing drawings

---

<b>Status</b>	<b>Assignee</b>	<b>Due Date</b>	<b>Priority</b>
Open	--	--	Critical
<b>Location</b>	<b>Trade</b>	<b>Type</b>	<b>Source File</b>
Main Building>05 - Roof	VDC - DMC - 90	--	NEMT.nwf
<b>Created By</b>	<b>Created Date</b>		
Kerri Estano	2023-05-23		

**Description**  
Area C (A1-2-1C, P1-1-1C)

### Snapshots



---

### Activity

---

**Kerri Estano created this issue.**  
*on Tuesday, May 23, 2023 at 01:09 pm EDT*

---

## Issue #446 - Roof drain location discrepancy between Arch & Plumbing drawings - Area A

---

<b>Status</b> Open	<b>Assignee</b> --	<b>Due Date</b> --	<b>Priority</b> Critical
<b>Location</b> Main Building>05 - Roof	<b>Trade</b> VDC - DMC - 90	<b>Type</b> --	<b>Source File</b> NEMT.nwf
<b>Created By</b> Kerri Estano	<b>Created Date</b> 2023-05-23		

**Description**  
(A1-2-1A, P1-1-2A)

### Snapshots



---

### Activity

---

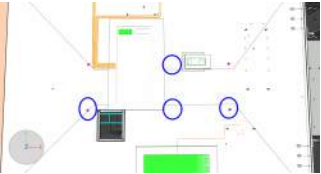
**Kerri Estano created this issue.**  
*on Tuesday, May 23, 2023 at 01:09 pm EDT*

# Issue #436 - Roof drain quantity & location discrepancies between Arch & Plumbing drawings

<b>Status</b> Open	<b>Assignee</b> --	<b>Due Date</b> --	<b>Priority</b> Critical
<b>Location</b> Main Building>05 - Roof	<b>Trade</b> VDC - DMC - 90	<b>Type</b> --	<b>Source File</b> NEMT.nwf
<b>Created By</b> Kerri Estano	<b>Created Date</b> 2023-05-23		

**Description**  
Area A (A1-2-1A, P1-2-1A)

## Snapshots



## Activity

**Kerri Estano created this issue.**  
*on Tuesday, May 23, 2023 at 12:49 pm EDT*