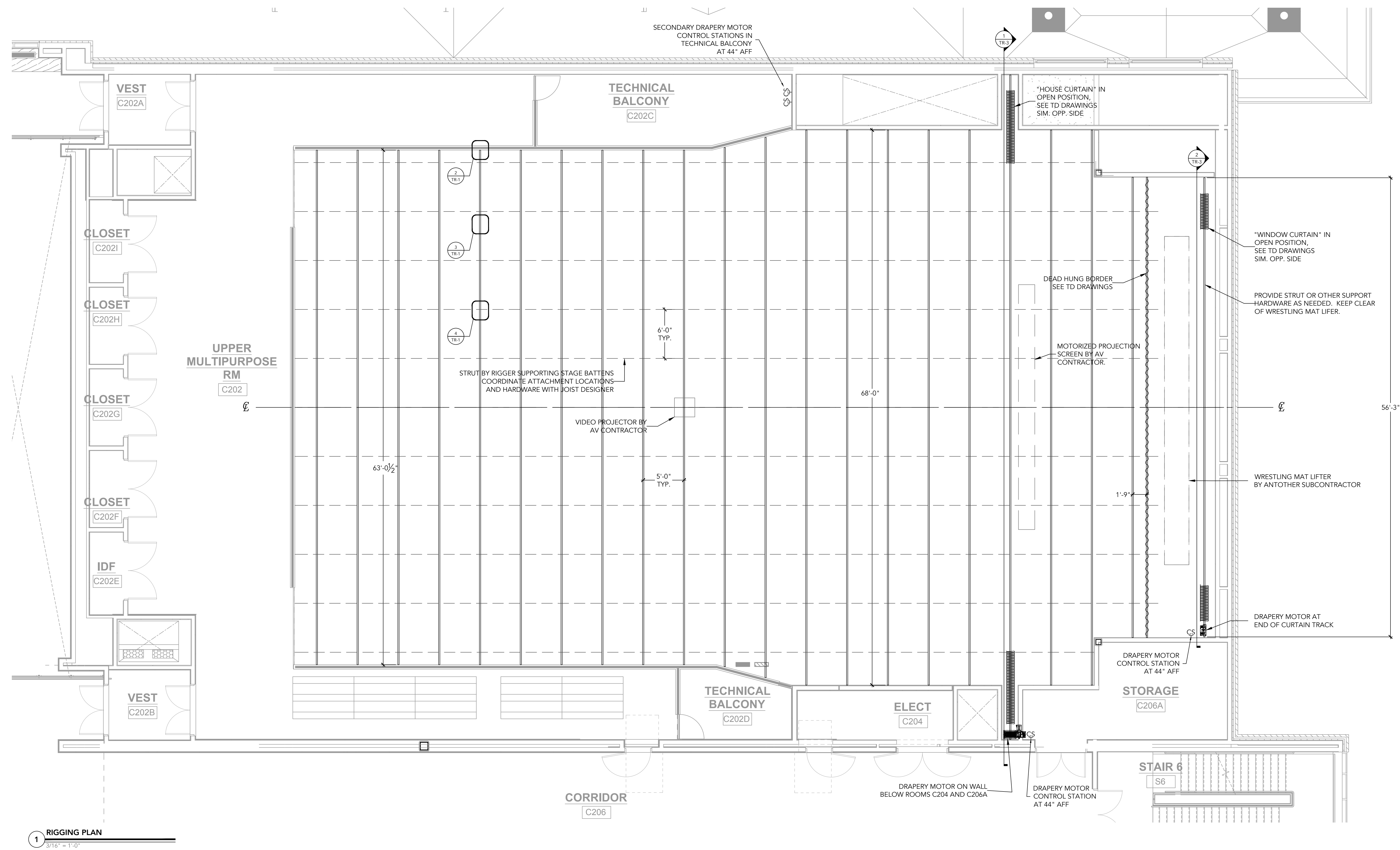


NOTES

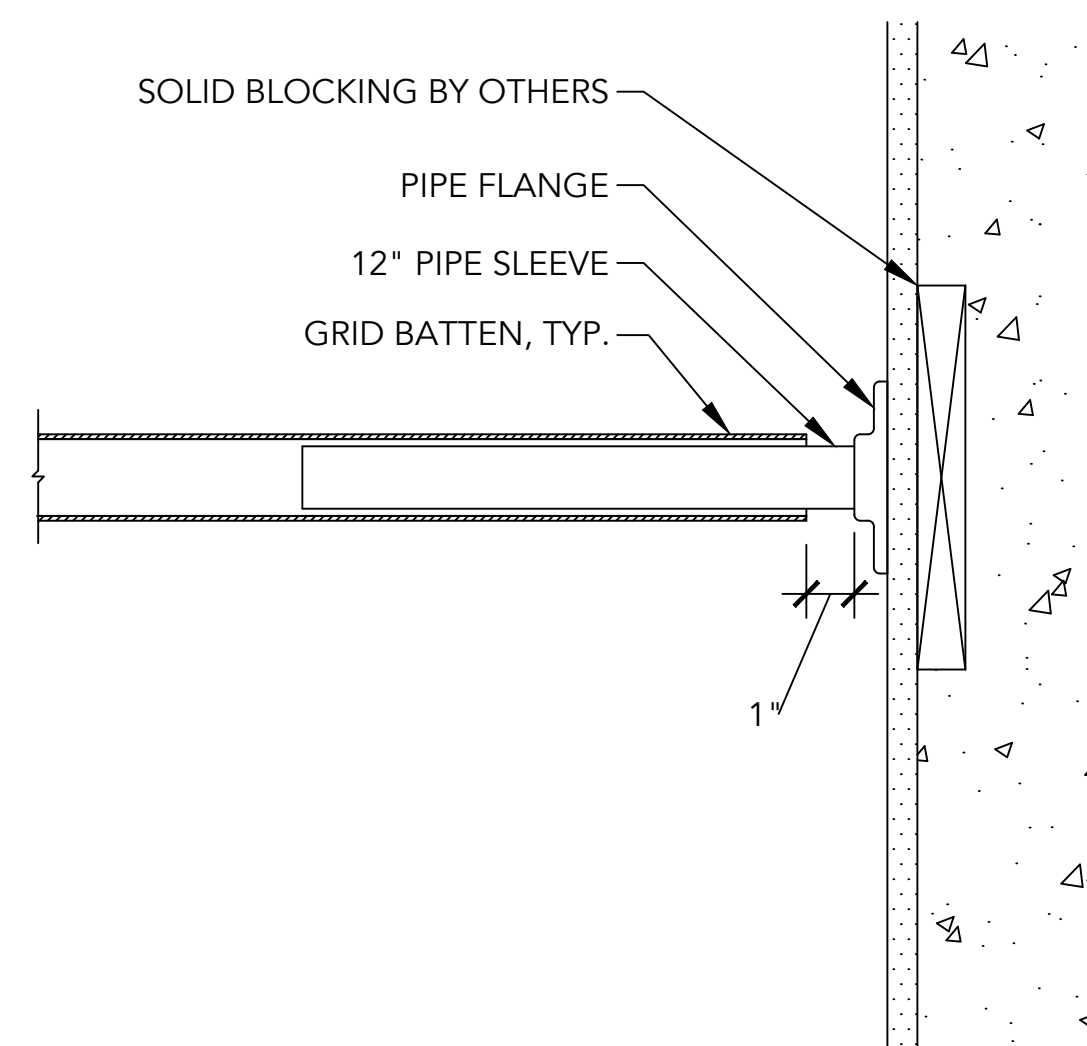
1. THE BATTENS SHALL BE CAPABLE OF SUPPORTING, AT MINIMUM, 30 LBS/FT OF UNIFORMLY DISTRIBUTED LOAD.
2. THE BATTENS SHALL BE CAPABLE OF SUSTAINING A POINT LOAD OF 100 POUNDS MID-SPAN BETWEEN ANY TWO SUSPENSION POINTS WITH A MAXIMUM SPAN DEFLECTION OF 1/180 OF THE SPAN.

ABBREVIATIONS

CR	CIRCUIT
COND	CONTINUOUS
DMX	DMX512
DS	DOWN STAGE (TOWARD THE AUDIENCE)
DSL	DOWN STAGE LEFT (WHEN FACING AUDIENCE)
DSR	DOWN STAGE RIGHT (WHEN FACING AUDIENCE)
EC	ELECTRICAL CONTRACTOR
EE	ELECTRICAL ENGINEER
FOH	FRONT OF HOUSE
GJB	GRID IRON JUNCTION BOX
GND	GROUND
GUC	GALVANIZED UTILITY (AIRCRAFT) CABLE
HL	HOUSE LEFT (WHEN FACING STAGE)
HR	HOUSE RIGHT (WHEN FACING STAGE)
MFR	MANUFACTURER
RC	RIGGING CONTRACTOR
SE	STRUCTURAL ENGINEER
SL	STAGE LEFT (WHEN FACING AUDIENCE)
SU	STAGE LIGHTING INTEGRATOR
SR	STAGE RIGHT (WHEN FACING AUDIENCE)
TBD	TO BE DETERMINED
TC	THEATRE CONSULTANT
US	UP STAGE (FARTHEST FROM THE AUDIENCE)
URL	UP STAGE LEFT
USR	UP STAGE RIGHT

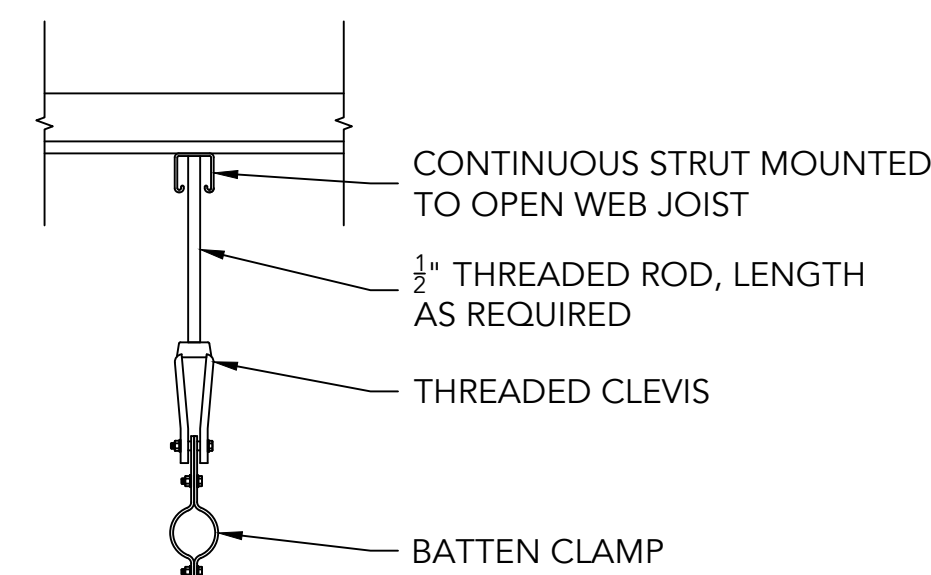


1 RIGGING PLAN
3/16" = 1'-0"

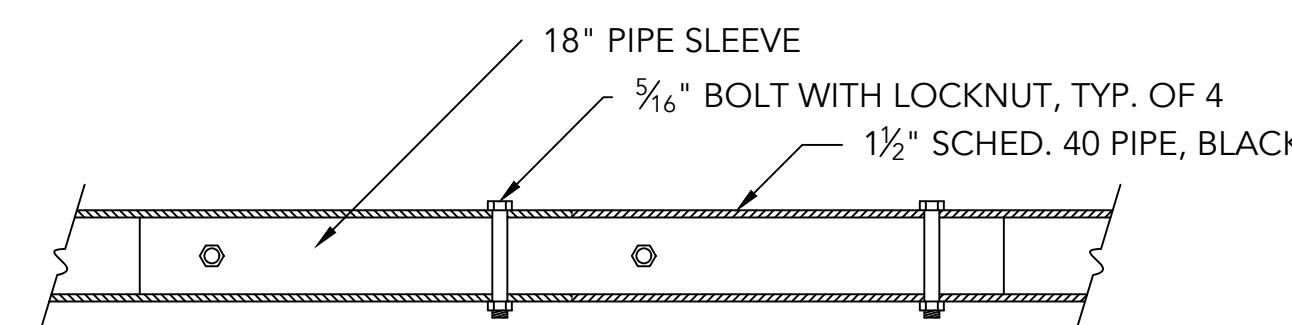


2 WALL FLANGE DETAIL
3\"/>

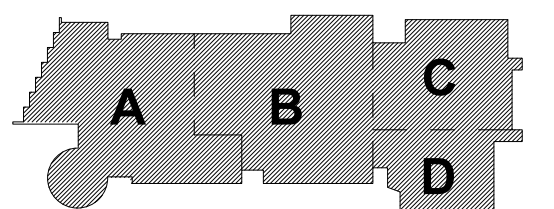
NOTE: PROVIDE ONE WALL FLANGE AT EACH WALL/BATTEN INTERSECTION.



3 BATTEN HANGER DETAIL
1 1/2\"/>



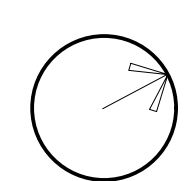
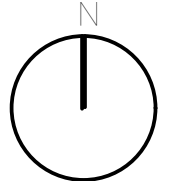
4 BATTEN SPICE DETAIL
3\"/>



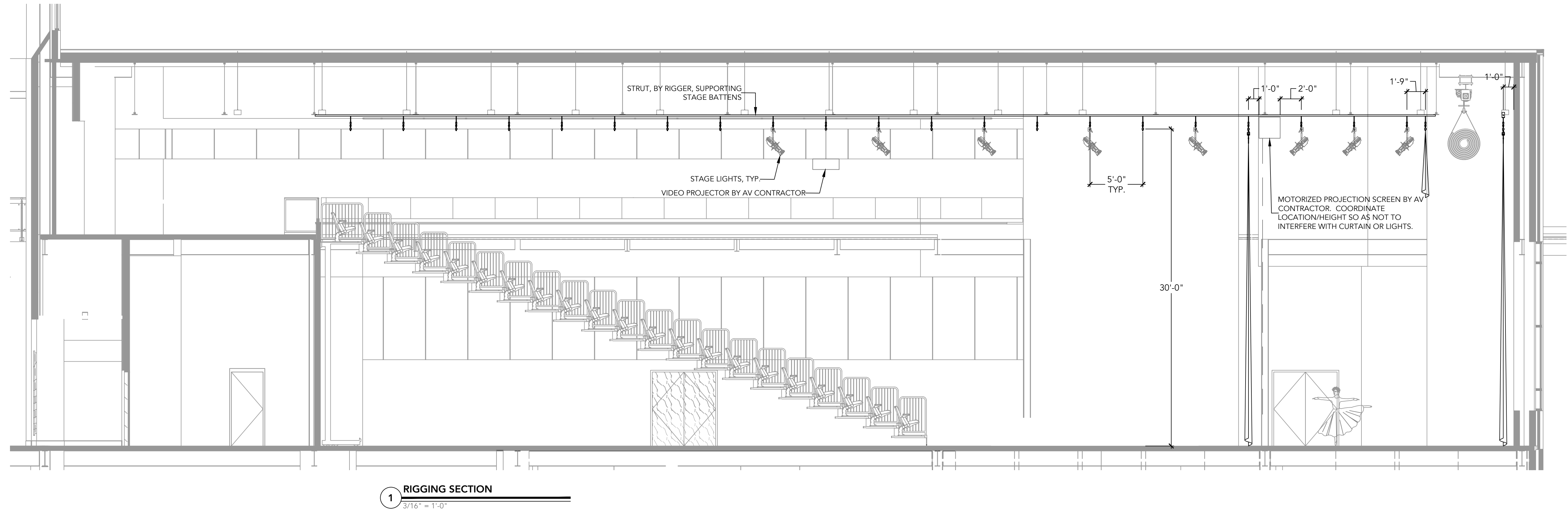
KEY PLAN

PROJECT NORTH

MAGNETIC NORTH



THEATRE RIGGING PLAN



1 RIGGING SECTION
3/16" = 1'-0"



Drumhey Rosane Anderson, Inc.
225 Oakland Road
Studio 205
South Windsor, CT
06074
Planning / Architecture / Interior Design
Tel: 817.864.1700
www.draus.com

Northeast
Metropolitan
Regional
Vocational High
School

100 Hemlock Road,
Wakefield, MA 01880

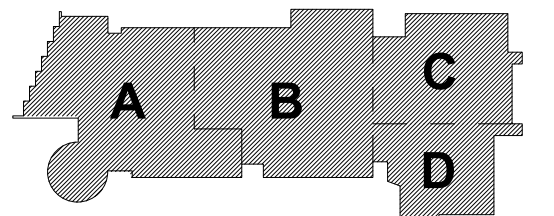
Theatre Consultant

STUDIO
T+L

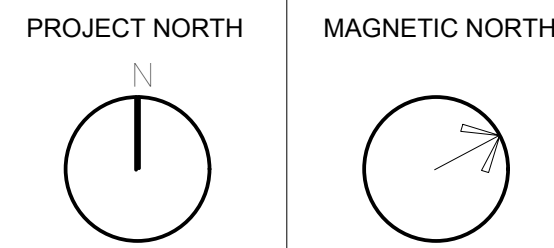
STUDIO T+L LLC
333 4th Street
Brooklyn, NY 11215
718.788.0588
www.Studio-TL.com

© COPYRIGHT 2022 DRUMHEY ROSANE ANDERSON, INC.

MSBA – 90%
CONSTRUCTION
DOCUMENTS
MAY 12, 2023



KEY PLAN



THEATRE
RIGGING
SECTION

Scale: AS NOTED
Job No.: 20202
Drawn By: JL
Date: MARCH 31, 2023

TR-2

WORK ON THIS SHEET IS ASSOCIATED WITH
SECTIONS 116133 AND 116143 UNLESS NOTED.

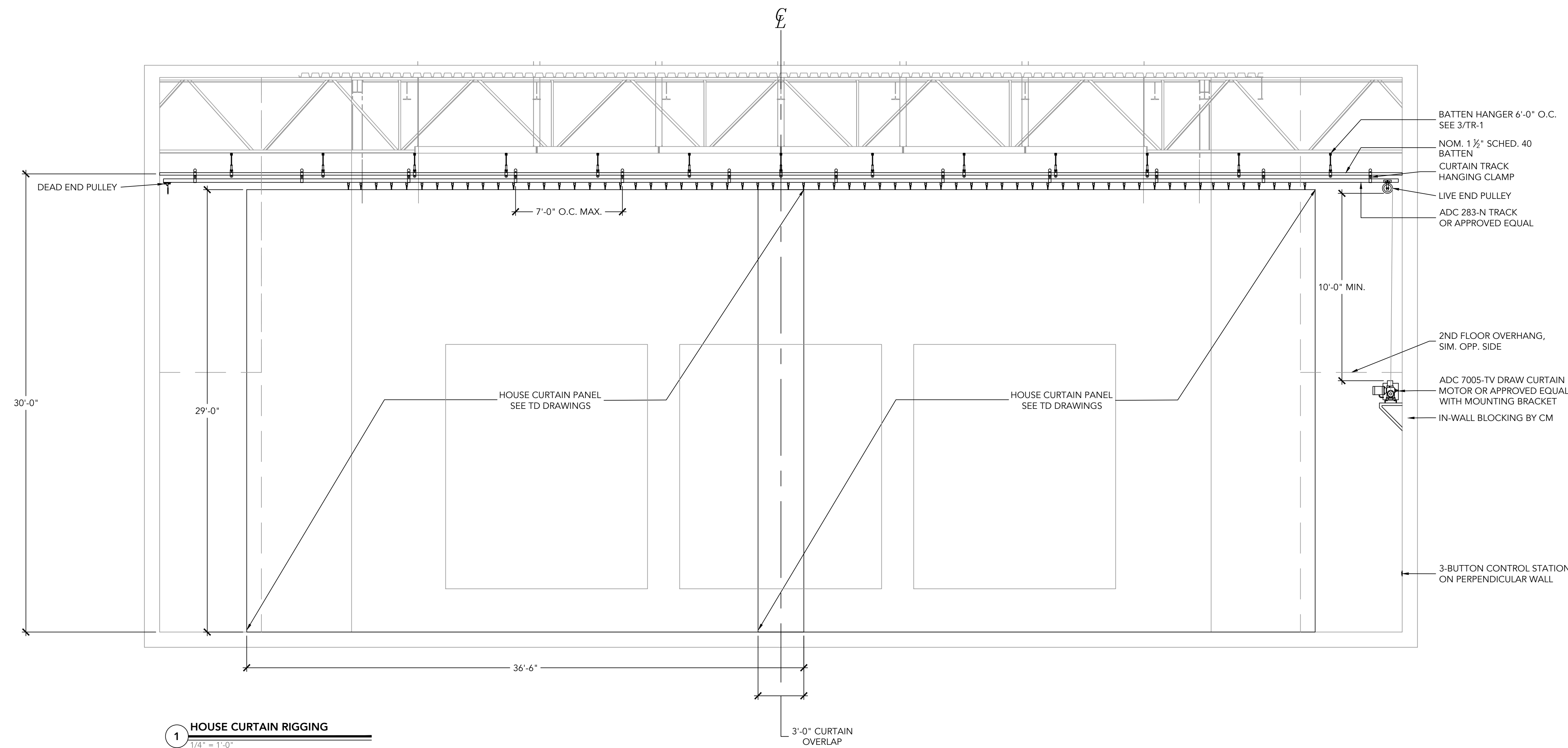
**Northeast
Metropolitan
Regional
Vocational High
School**

100 Hemlock Road,
Wakefield, MA 01880

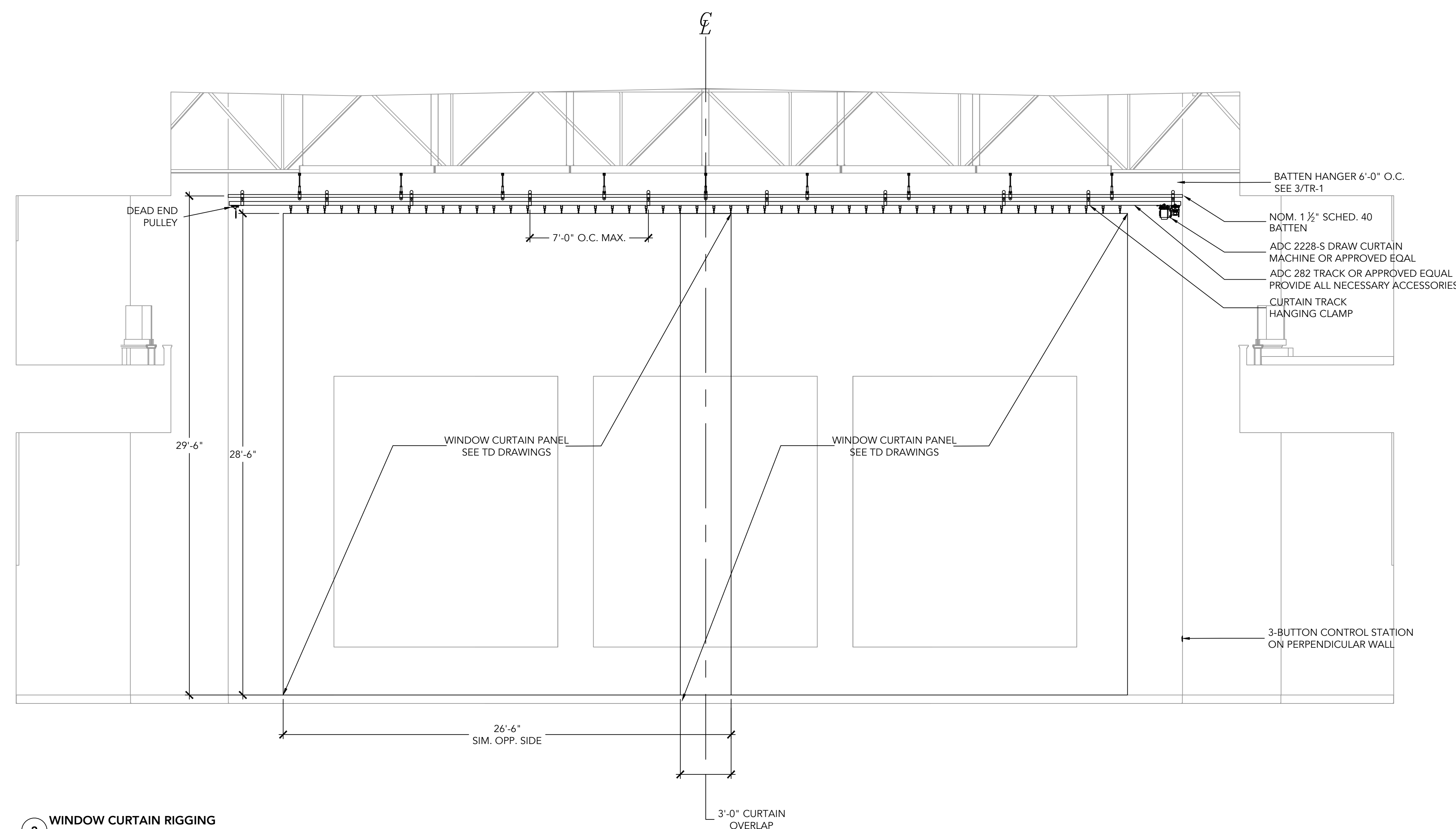
Theatre Consultant

**STUDIO
T+L**

STUDIO T+L LLC
333 4th Street
Brooklyn, NY 11215
718.788.0588
www.Studio-TL.com



1 HOUSE CURTAIN RIGGING
1/4" = 1'-0"

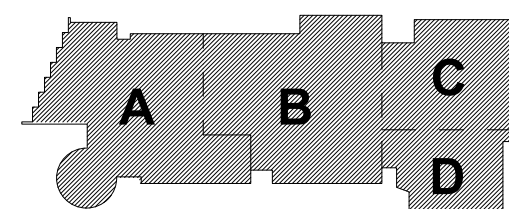


2 WINDOW CURTAIN RIGGING
1/4" = 1'-0"

ABBREVIATIONS

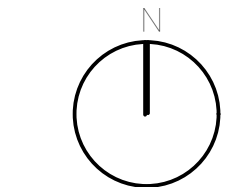
CR	CIRCUIT
COND.	CONTINUOUS
DMX	USITT DMX512
DS	DOWN STAGE (TOWARD THE AUDIENCE)
DSL	DOWN STAGE LEFT (WHEN FACING AUDIENCE)
DSR	DOWN STAGE RIGHT (WHEN FACING AUDIENCE)
EC	ELECTRICAL CONTRACTOR
EE	ELECTRICAL ENGINEER
FOH	FRONT OF HOUSE
GJB	GRID IRON JUNCTION BOX
GND	GROUND
GUC	GALVANIZED UTILITY (AIRCRAFT) CABLE
HL	HOUSE LEFT (WHEN FACING STAGE)
HR	HOUSE RIGHT (WHEN FACING STAGE)
MFR	MANUFACTURER
RC	RIGGING CONTRACTOR
SE	STRUCTURAL ENGINEER
SL	STAGE LEFT (WHEN FACING AUDIENCE)
SU	STAGE LIGHTING INTEGRATOR
SR	STAGE RIGHT (WHEN FACING AUDIENCE)
TBD	TO BE DETERMINED
TC	THEATRE CONSULTANT
US	UP STAGE (FARTHEST FROM THE AUDIENCE)
URL	UP STAGE LEFT
USR	UP STAGE RIGHT

MSBA – 90%
CONSTRUCTION
DOCUMENTS
MAY 12, 2023

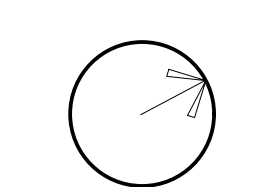


KEY PLAN

PROJECT NORTH



MAGNETIC NORTH



**HOUSE AND
WINDOW
TRAVELER
CURTAIN RIGGING**

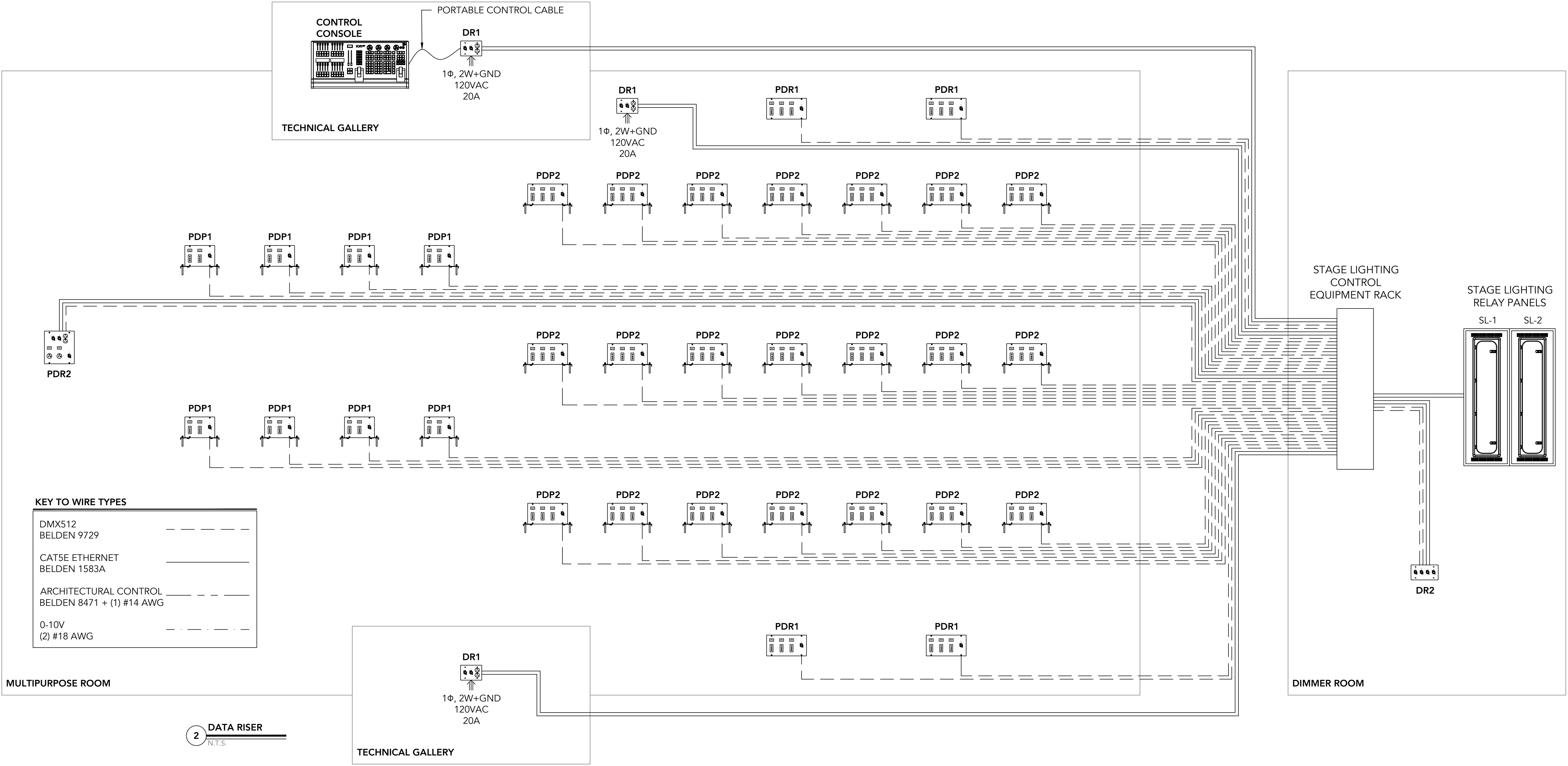
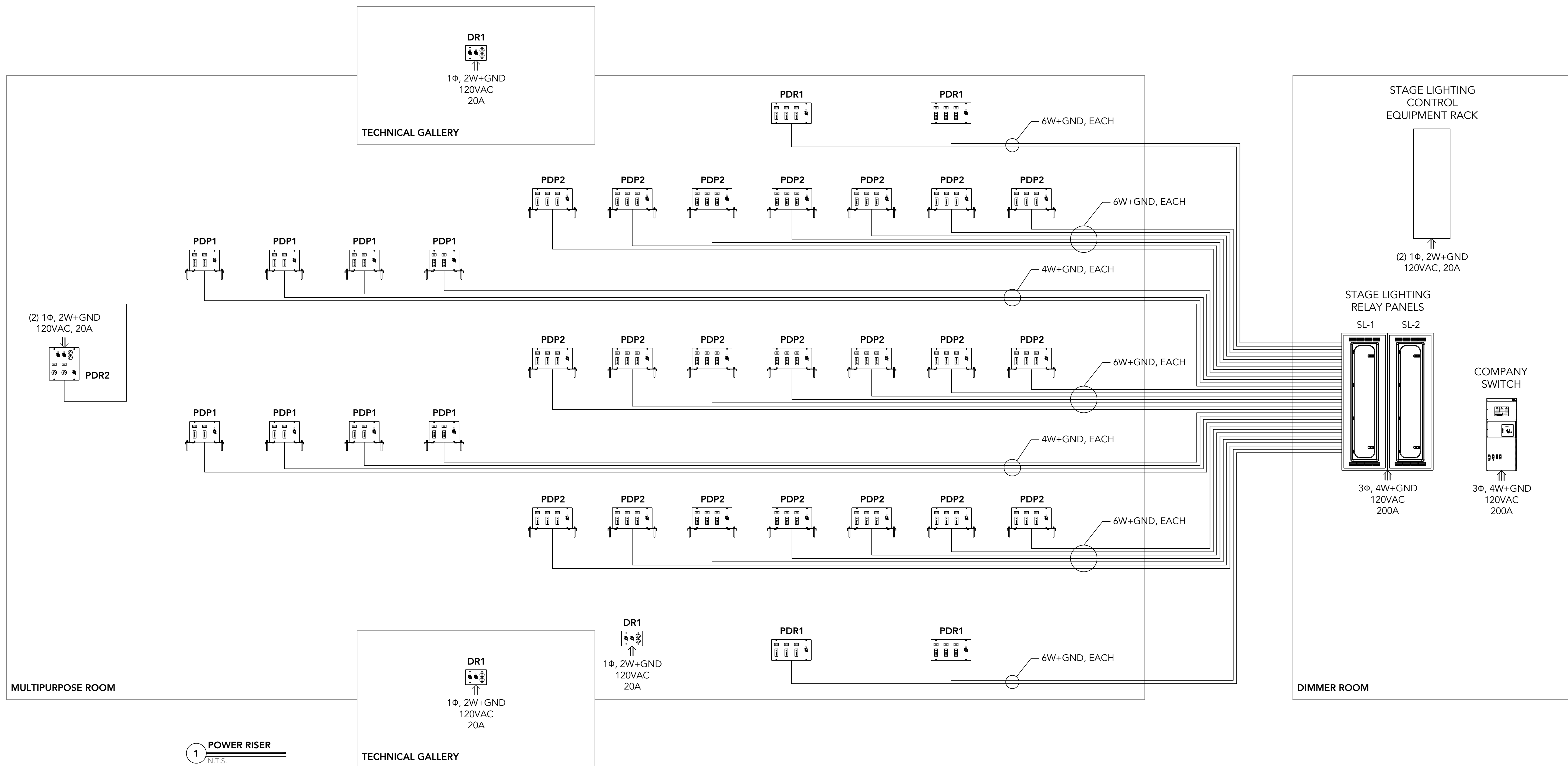
Scale: AS NOTED

Job No.: 20202

Drawn By: JL

Date: MARCH 31, 2023

TR-3

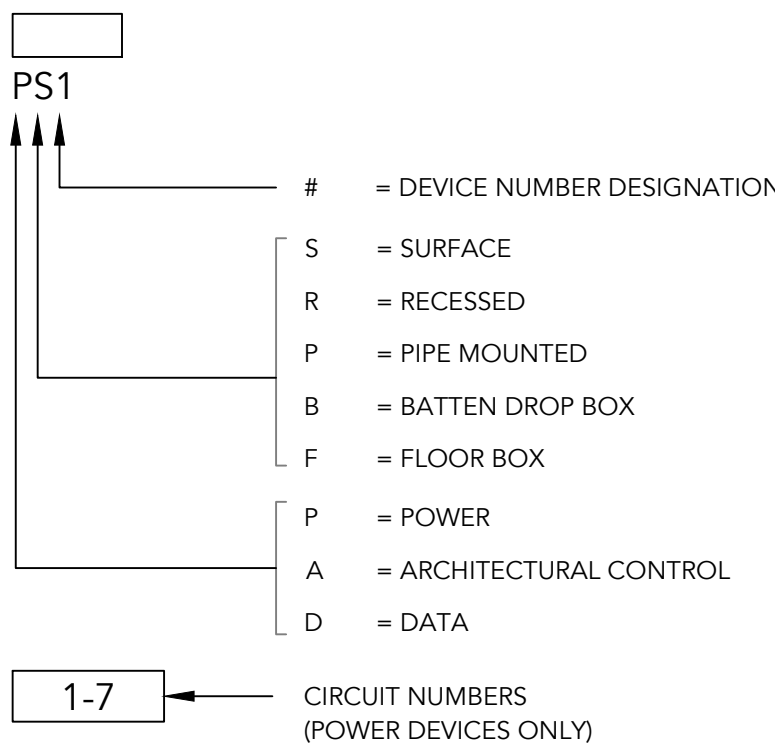


TE DRAWING NOTES

1. THE ELECTRICAL CONTRACTOR (EC) SHALL CROSS REFERENCE THESE DRAWINGS AND THE ELECTRICAL DRAWINGS BEFORE ORDERING FIXTURES, OR ROUGH-IN. THE EC SHALL NOTIFY THE THEATRE CONSULTANT OF ANY DISCREPANCIES IN LOCATION OR FIXTURE TYPE. WORK ON THESE PAGES IS COORDINATED WITH THE GENERAL CONDITIONS, DIVISION 26 AND WITH SECTION 116133 STAGE RIGGING.
2. THESE DRAWINGS SHOW LAYOUTS, LOCATIONS AND TYPES OF EQUIPMENT FOR THE STAGE, HOUSE AND WORK LIGHT SYSTEM AND THE CONTROL SYSTEM. DETAILS ON WIRE AND CONDUIT SIZES ARE FOUND ON THE ELECTRICAL ENGINEERS DRAWINGS.
3. POWER WIRING AND LOW VOLTAGE CONTROL WIRING SHALL BE RUN IN SEPARATE CONDUIT. LONG PARALLEL RUNS 4' OR LONGER OF THE TWO CONDUITS SIDE BY SIDE SHALL NOT BE PERMITTED.
4. EACH CIRCUIT REPRESENTS A 20A, 120VAC CIRCUIT AND HOME RUN TO THE DIMMING RACK.
5. EACH CIRCUIT SHALL HAVE TWO WIRES AND SHALL BE GROUNDED. COMMON NEUTRALS SHALL NOT BE PERMITTED.
6. EACH CIRCUIT IS WIRED DIRECTLY TO THE DIMMER RACK AND IS PROTECTED BY THE DIMMER'S INTEGRAL CIRCUIT BREAKER. ADDITIONAL PROTECTION IS NOT REQUIRED.
7. THE DIMMING EQUIPMENT, WIRING DEVICES AND CONTROL DEVICES SHALL BE SET INTO PLACE BY THE EC. IT SHALL BE THE WORK OF THE EC TO RUN ALL CONDUIT AND WIRING FOR LINE VOLTAGE AND LOW VOLTAGE CIRCUITS.

KEY TO SYMBOLS

STANDARD WIRING DEVICE



STANDARD CONNECTORS

(NOT TO SCALE)

- 20A 2P&G "STAGE PIN"
- 50A 2P&G "STAGE PIN"
- 6 CIRCUIT 20A VEA
- NEMA 15-20 "TWIST LOCK"
- POWERCON TRUE1 TOP
- 15/20A CONVENIENCE OUTLET
- XLRS "DMX"
- RJ45 "NET"

ABBREVIATIONS

- | | |
|-------|-----------------------------------------|
| CR | CIRCUIT |
| COND. | CONDUCTORS |
| CONT. | CONTINUOUS |
| DMX | DMX512 |
| DS | DOWN STAGE (TOWARD THE AUDIENCE) |
| DSL | DOWN STAGE LEFT (WHEN FACING AUDIENCE) |
| DSR | DOWN STAGE RIGHT (WHEN FACING AUDIENCE) |
| EC | ELECTRICAL CONTRACTOR |
| EE | ELECTRICAL ENGINEER |
| FOH | FRONT OF HOUSE |
| GJB | GRID IRON JUNCTION BOX |
| GND | GROUND |
| HL | HOUSE LEFT (WHEN FACING STAGE) |
| HR | HOUSE RIGHT (WHEN FACING STAGE) |
| LSI | LIGHTING SYSTEM INTEGRATOR |
| MFR | MANUFACTURER |
| RFU | REMOTE FOCUS UNIT |
| RTC | RIGGING TRADE CONTRACTOR |
| SL | STAGE LEFT (WHEN FACING AUDIENCE) |
| SR | STAGE RIGHT (WHEN FACING AUDIENCE) |
| TBD | TO BE DETERMINED |
| TC | THEATRE CONSULTANT |
| US | UP STAGE (FARTHEST FROM THE AUDIENCE) |
| URL | UP STAGE LEFT |
| USR | UP STAGE RIGHT |
| W | WIRE |

DMX512 CABLING

1. THE ELECTRICAL CONTRACTOR (EC) SHALL BECOME FAMILIAR WITH THE INSTALLATION REQUIREMENTS FOR ANSI/ESTA DMX512 SYSTEMS PRIOR TO BEGINNING INSTALLATION. IT IS RECOMMENDED THAT THE EC REVIEW *RECOMMENDED PRACTICE FOR DMX512 A GUIDE FOR USERS AND INSTALLERS* BY ADAM BENNETTE, WHICH COVERS BOTH ANSI/ESTA 1.11 DMX512 AND ANSI/ESTA 1.20 ROW SYSTEMS. THE BOOKLET IS A FREE DOWNLOAD AT [HTTP://TSP-ESTA.ORG/FREESTANDARDS](http://tsp-esta.org/freestandards) AT THE BOTTOM OF THE PAGE.
2. DO NOT PURCHASE OR INSTALL CABLE THAT IS NOT:
 - 2.1. LISTED AS APPROVED IN THE STAGE LIGHTING CONTROL SYSTEM SHOP DRAWINGS, OR
 - 2.2. APPROVED BY THE STAGE LIGHTING SYSTEM INTEGRATOR PRIOR TO SHOP DRAWING APPROVAL
3. ALL PERMANENT DMX CABLES SHALL BE INSTALLED IN CONDUIT.
4. FOLLOW MANUFACTURER'S INSTALLATION INSTRUCTIONS INCLUDED WITH THE SHOP DRAWINGS. PAY PARTICULAR ATTENTION TO CABLE/PIN CONNECTIONS TO AVOID CROSS-WIRING.
5. DMX CABLE RUNS CONTROLLING PERMANENTLY INSTALLED DEVICES SHALL HAVE NO MORE THAN 30 DEVICES PER RUN. THE EC SHALL PLAN ALL DMX CABLE RUNS ACCORDINGLY.
6. TOUCH-AND-GO CONNECTIONS AND "Y" CABLES ARE NOT PERMITTED. DMX SIGNAL MUST BE PASSED ALONG VIA THE DEVICE'S INTEGRAL INPUT/OUTPUT CONNECTORS.
7. ALL DMX CABLE RUNS THAT END IN AN OPERATING DEVICE SHALL BE TERMINATED BY A 110-130 OHM 1/2 WATT RESISTOR BETWEEN THE DATA LINES AND INSTALLED IN A SUITABLE ENCLOSURE. THE EC AND STAGE LIGHTING SYSTEM INTEGRATOR SHALL COORDINATE THE NUMBER OF TERMINATORS REQUIRED. CABLE RUNS THAT END IN A DMX INPUT OR OUTPUT 5-PIN XLR JACK THAT IS NOT PART OF AN OPERATING DEVICE (SUCH AS A DATA DISTRIBUTION FACEPLATE) DO NOT REQUIRE TERMINATION.
8. TERMINATE ALL DMX CABLE RUNS BY:
 - 8.1. SWITCHING ON THE LAST DEVICE'S INTEGRAL TERMINATOR.
 - 8.2. ATTACHING A 5-PIN XLR OR RJ45 (DEPENDING ON THE DEVICE) TERMINATOR TO THE LAST DEVICE'S DMX OUT PORT. THESE TERMINATORS ARE AVAILABLE FROM THE STAGE LIGHTING SYSTEM INTEGRATOR.
9. THE EC SHALL SET THE START DMX ADDRESS ON ALL LIGHT FIXTURES, POWER SUPPLIES, AND OTHER DATA RECEIVING DEVICES ACCORDING TO THE LIGHTING CONTROL SHOP DRAWINGS AND/OR THE LP DRAWINGS AT THE TIME OF FIXTURE INSTALLATION. FOLLOW MANUFACTURER'S INSTRUCTIONS SO THAT THE ADDRESS IS HELD IN MEMORY UNTIL THE LIGHTING CONTROL SYSTEM IS COMMISSIONED.

THE WORK ON THIS SHEET IS ASSOCIATED WITH SECTIONS 116153, 260963, AND 265113 UNLESS NOTED



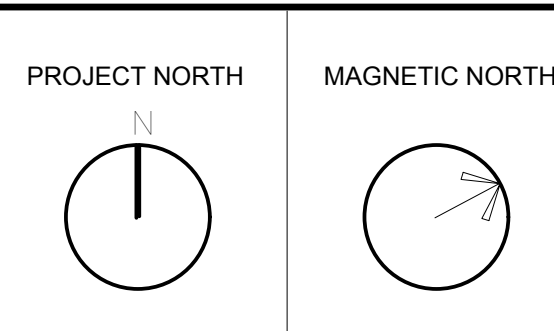
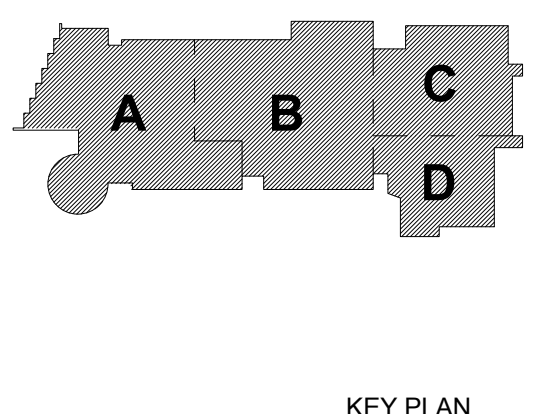
Drummeys Rosanne Anderson, Inc.
225 Oakland Road
Studio 205
South Windsor, CT
06074
Planning / Architecture / Interior Design
Tel: 817.864.1700
www.dra.com

**Northeast
Metropolitan
Regional
Vocational High
School**
100 Hemlock Road,
Wakefield, MA 01880

Theatre Consultant
**STUDIO
T+L**
STUDIO T+L LLC
333 4th Street
Brooklyn, NY 11215
718.788.0588
www.Studio-TL.com

© COPYRIGHT 2022 DRUMMEYS ROSANNE ANDERSON, INC.

MSBA – 90%
CONSTRUCTION
DOCUMENTS
MAY 12, 2023



**THEATRE
ELECTICS
POWER + DATA
RISERS**

Scale: AS NOTED
Job No.: 20202
Drawn By: JL
Date: MARCH 31, 2023
TE-1

Drumrey Rosane Anderson, Inc.

225 Oakland Road	260 Charles Street
Studio 205	Studio 300
South Windsor, CT	Waltham, MA
06074	02453

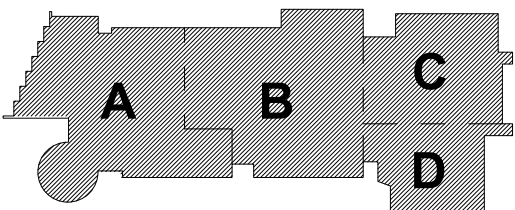
Planning | Architecture | Interior Design

Tel: 617.964.1700
www.draws.com

100 Hemlock Road,
Wakefield, MA 01880

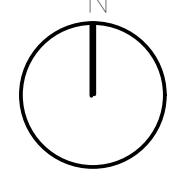
Theatre Consultant

STUDIO T+L LLC
333 4th Street
Brooklyn, NY 11215
718.788.0588
www.Studio-TL.com

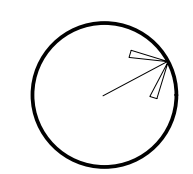


KEY PLAN

PROJECT NORTH



MAGNETIC NORTH



Scale: AS NOTED
Job No.: 20202
Drawn By: JL
Date: MARCH 31, 2020

TE-2.0

Drummeys Rosane Anderson, Inc.

225 Oakland Road	260 Charles Street
Studio 205	Studio 300
South Windsor, CT	Waltham, MA
06074	02453

Planning | Architecture | Interior Design

Tel: 617.964.1700
www.draws.com

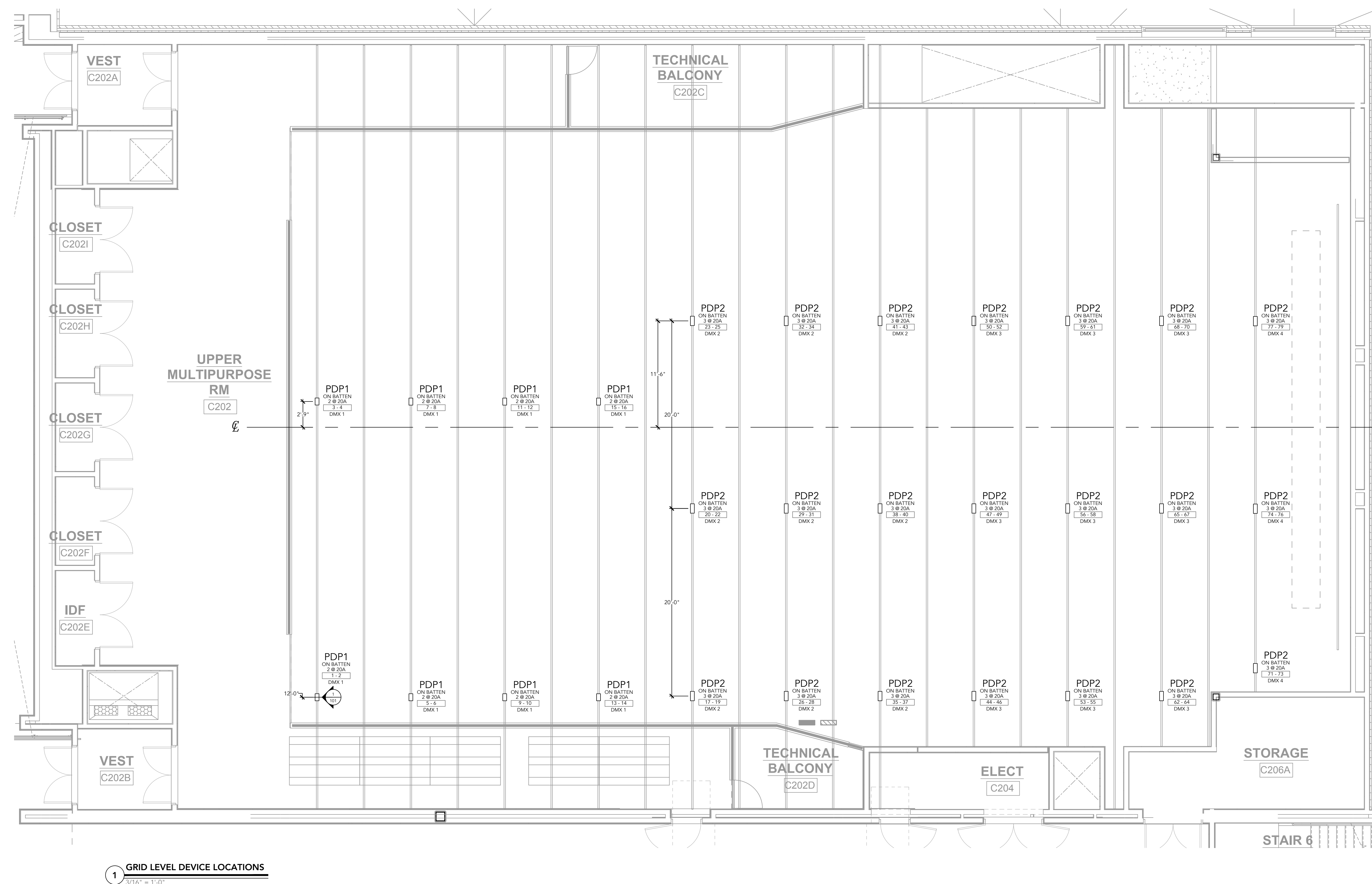
**Northeast
Metropolitan
Regional
Vocational High
School**

100 Hemlock Road,
Wakefield, MA 01880

Theatre Consultant

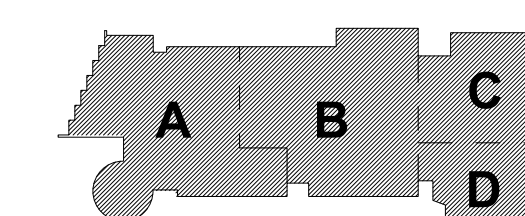
**STUDIO
T+L**

STUDIO T+L LLC
333 4th Street
Brooklyn, NY 11215
718.788.0588
www.Studio-TL.com



© NOVEMBER 2003 CONSUMER MAGAZINE AND FORUM INC.

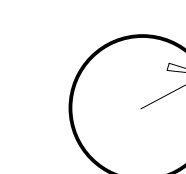
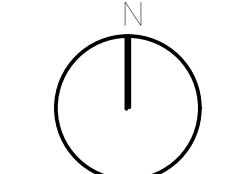
MSBA – 90%
CONSTRUCTION
DOCUMENTS
MAY 12, 2023



KEY PLAN

PROJECT NORTH

MAGNETIC NORTH



THEATRE ELECTICS DEVICE LOCATIONS

1000

Job No. : 20

Drawn By: JL

Date: MARCH 31, 2023

TE-2.1

THE WORK ON THIS SHEET IS ASSOCIATED WITH SECTIONS:
116153, 260963, AND 265113 UNLESS NOTED

DRA

Drumhey Rosane Anderson, Inc.
225 Oakland Road
Studio 205
South Windsor, CT
06074
Planning / Architecture / Interior Design
Tel: 617.864.1700
www.draws.com

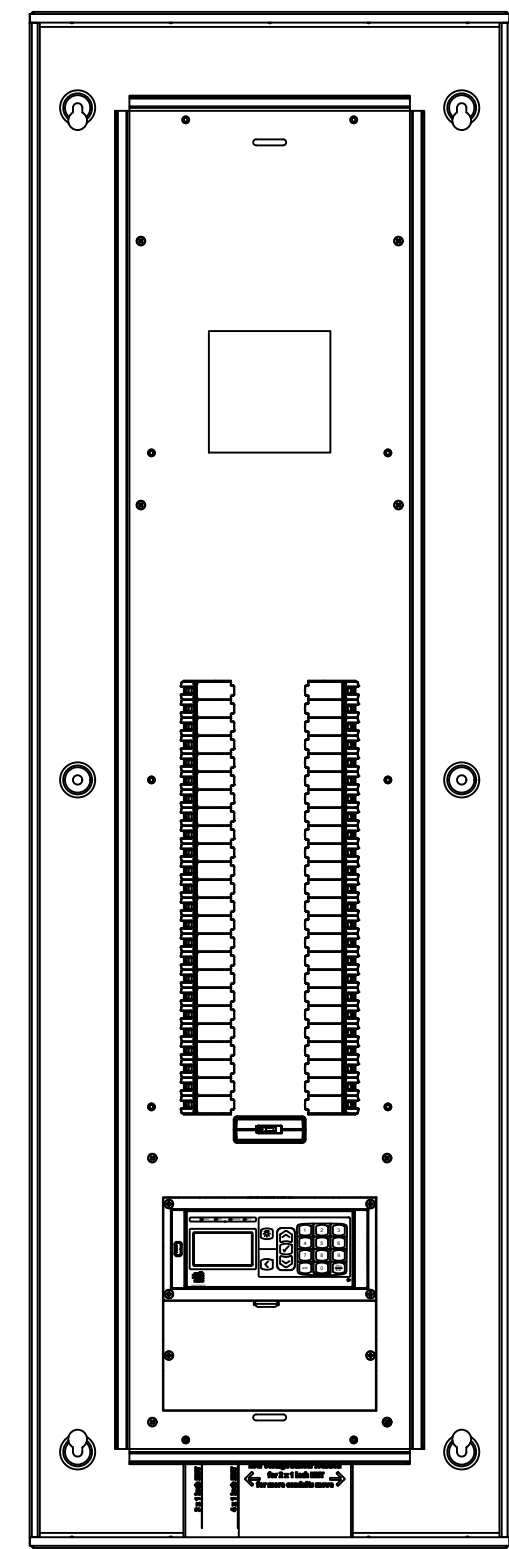
250 Charles Street
Studio 300
Waltham, MA
02453

**Northeast
Metropolitan
Regional
Vocational High
School**
100 Hemlock Road,
Wakefield, MA 01880

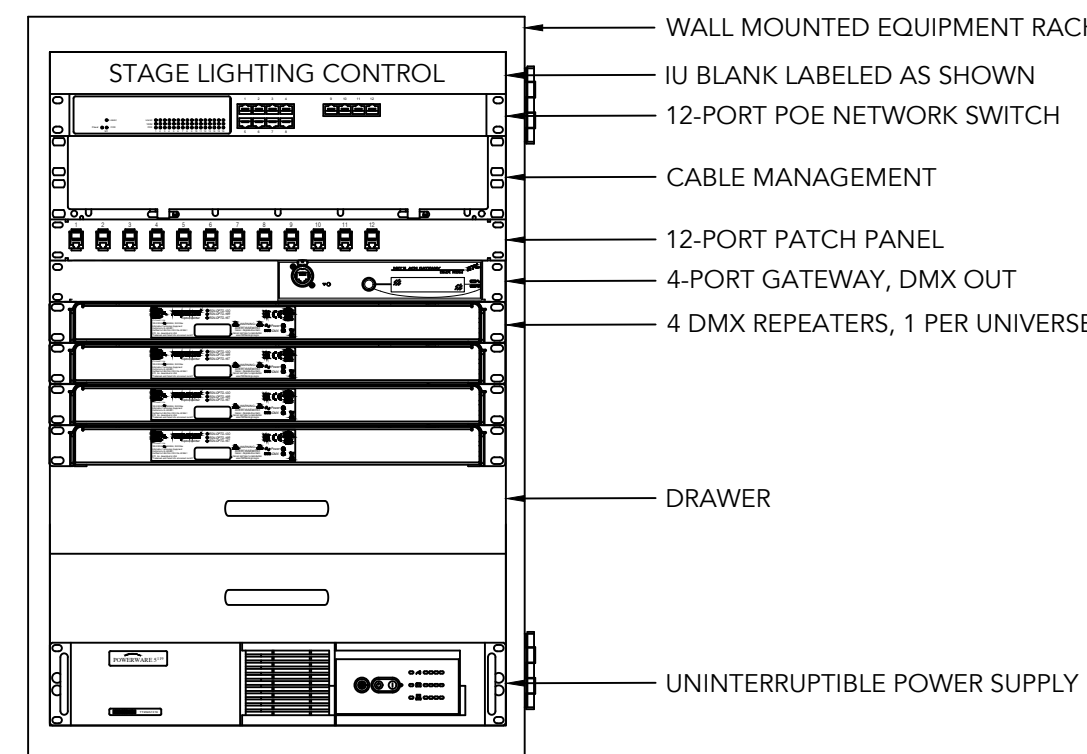
Theatre Consultant

**STUDIO
T+L**

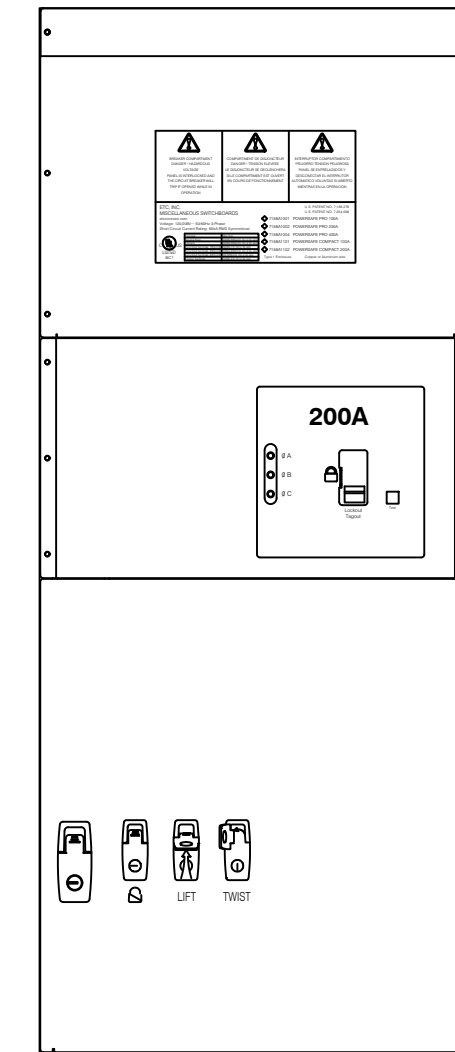
STUDIO T+L LLC
333 4th Street
Brooklyn, NY 11215
718.788.0588
www.Studio-TL.com



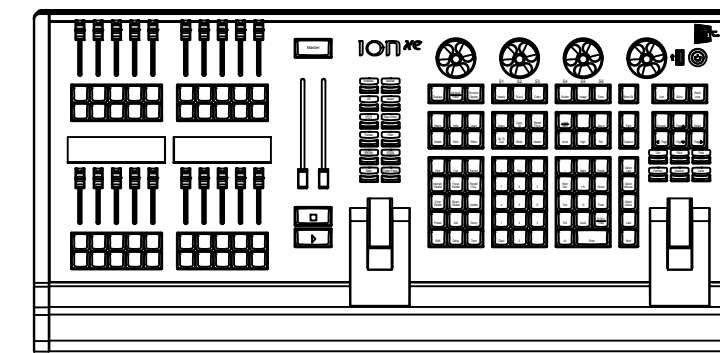
1 LIGHTING RELAY PANEL
1/32" = 1'-0"



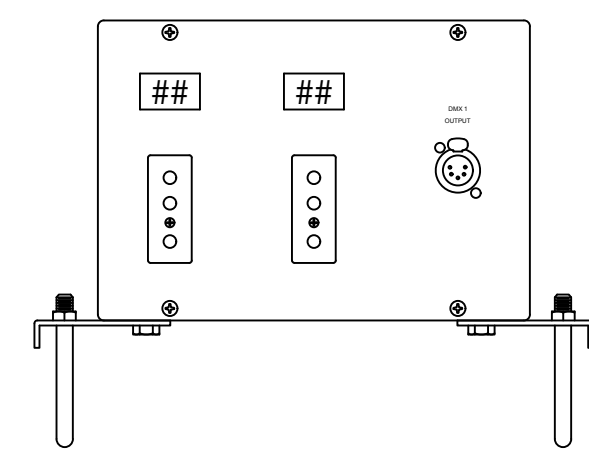
2 CONTROL EQUIPMENT RACK
1/32" = 1'-0"



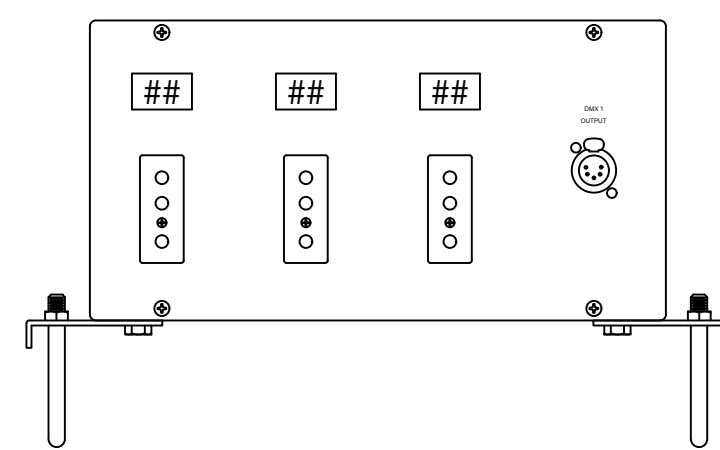
3 COMPANY SWITCH
1/32" = 1'-0"



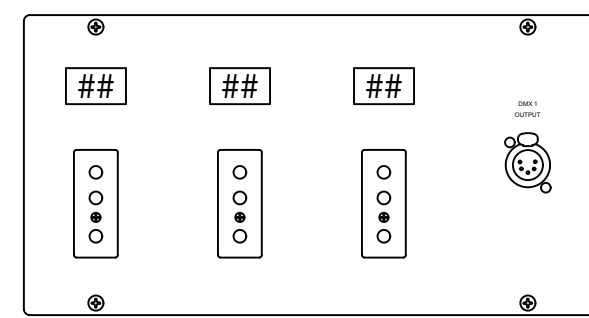
3 LIGHTING CONTROL CONSOLE (ETC ION XE 20)
1/32" = 1'-0"



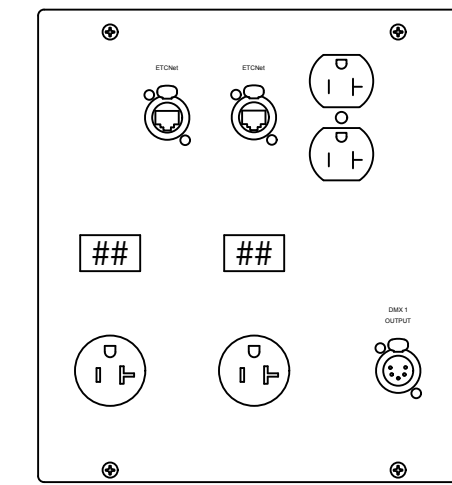
TYPE: PDP1
QUANTITY: 8
PLATE FINISH: BLACK
NOMENCLATURE COLOR: WHITE
NOMENCLATURE STYLE: ENGRAVED/LAMICOD TAGS - 3/8" TEXT
BOX STYLE: PRE-MOUNT
NOTES: LABEL DMX PORT WITH UNIVERSE NUMBER



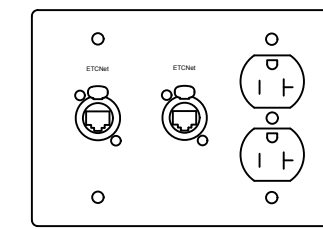
TYPE: PDP2
QUANTITY: 21
PLATE FINISH: BLACK
NOMENCLATURE COLOR: WHITE
NOMENCLATURE STYLE: ENGRAVED/LAMICOD TAGS - 3/8" TEXT
BOX STYLE: PRE-MOUNT
NOTES: LABEL DMX PORT WITH UNIVERSE NUMBER



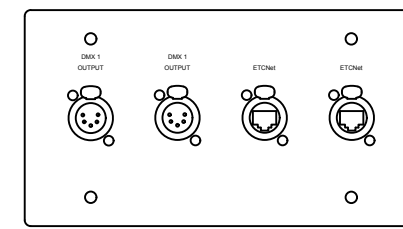
TYPE: PDR1
QUANTITY: 4
PLATE FINISH: WHITE
NOMENCLATURE COLOR: WHITE
NOMENCLATURE STYLE: ENGRAVED/LAMICOD TAGS - 3/8" TEXT
BOX STYLE: RECESSED
NOTES: LABEL DMX PORT WITH UNIVERSE NUMBER



TYPE: PDR2
QUANTITY: 1
PLATE FINISH: WHITE
NOMENCLATURE COLOR: WHITE
NOMENCLATURE STYLE: ENGRAVED/LAMICOD TAGS - 3/8" TEXT
BOX STYLE: RECESSED
NOTES: LABEL DMX PORT WITH UNIVERSE NUMBER



TYPE: DR1
QUANTITY: 3
PLATE FINISH: WHITE
NOMENCLATURE COLOR: WHITE
NOMENCLATURE STYLE: ENGRAVED/LAMICOD TAGS - 3/8" TEXT
BOX STYLE: RECESSED
NOTES: LABEL NET PORT TO CORRESPOND WITH PORT NUMBER ON NETWORK SWITCH

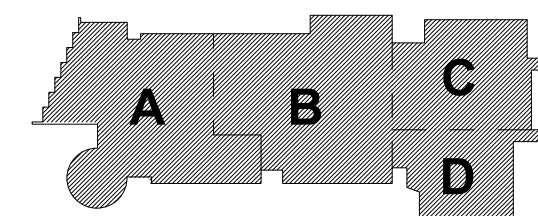


TYPE: DR2
QUANTITY: 1
PLATE FINISH: WHITE
NOMENCLATURE COLOR: WHITE
NOMENCLATURE STYLE: ENGRAVED/LAMICOD TAGS - 3/8" TEXT
BOX STYLE: RECESSED
NOTES: 1. LABEL DMX PORTS WITH UNIVERSE NUMBER
2. LABEL NET PORT TO CORRESPOND WITH PORT NUMBER ON NETWORK SWITCH

4 CONNECTION DEVICE DETAILS
3/8" = 1'-0"

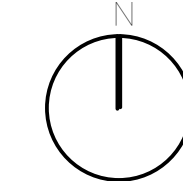
© COPYRIGHT 2022 DRUMHEY ROSANE ANDERSON, INC.

MSBA – 90%
CONSTRUCTION
DOCUMENTS
MAY 12, 2023

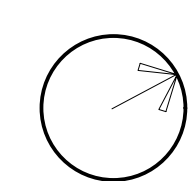


KEY PLAN

PROJECT NORTH



MAGNETIC NORTH



**THEATRE
ELECTICS
DEVICE DETAILS**

Scale: AS NOTED
Job No.: 20202
Drawn By: JL
Date: MARCH 31, 2023

TE-3

THE WORK ON THIS SHEET IS ASSOCIATED WITH SECTIONS
116153, 260963, AND 265113 UNLESS NOTED

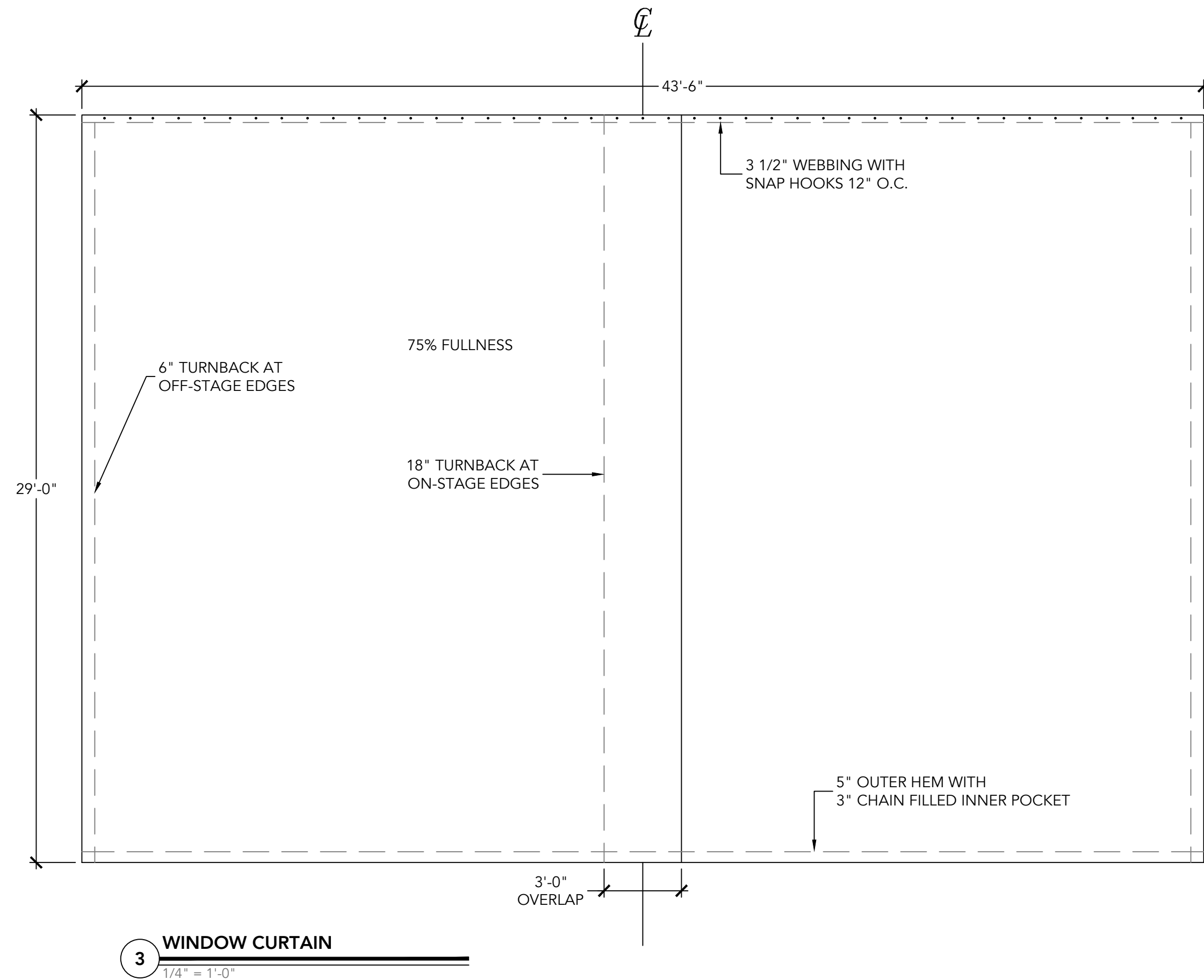
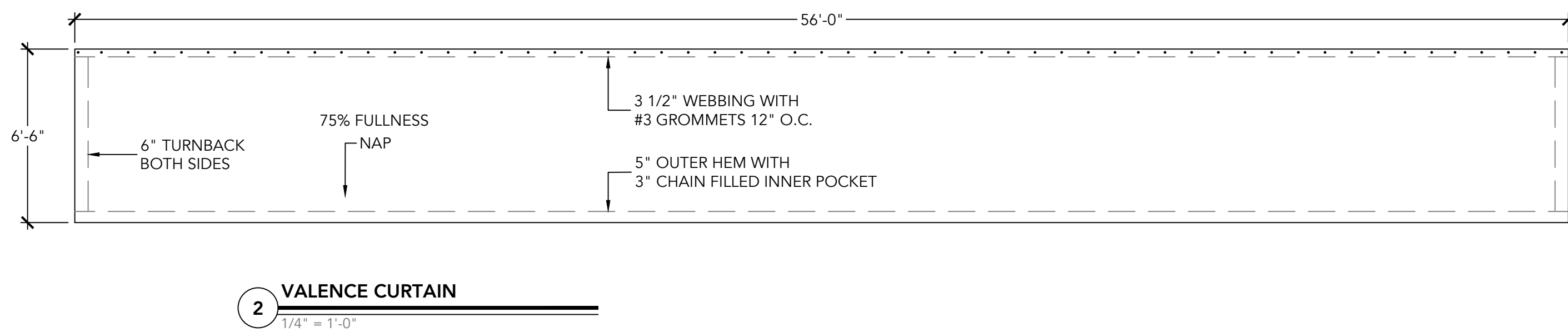
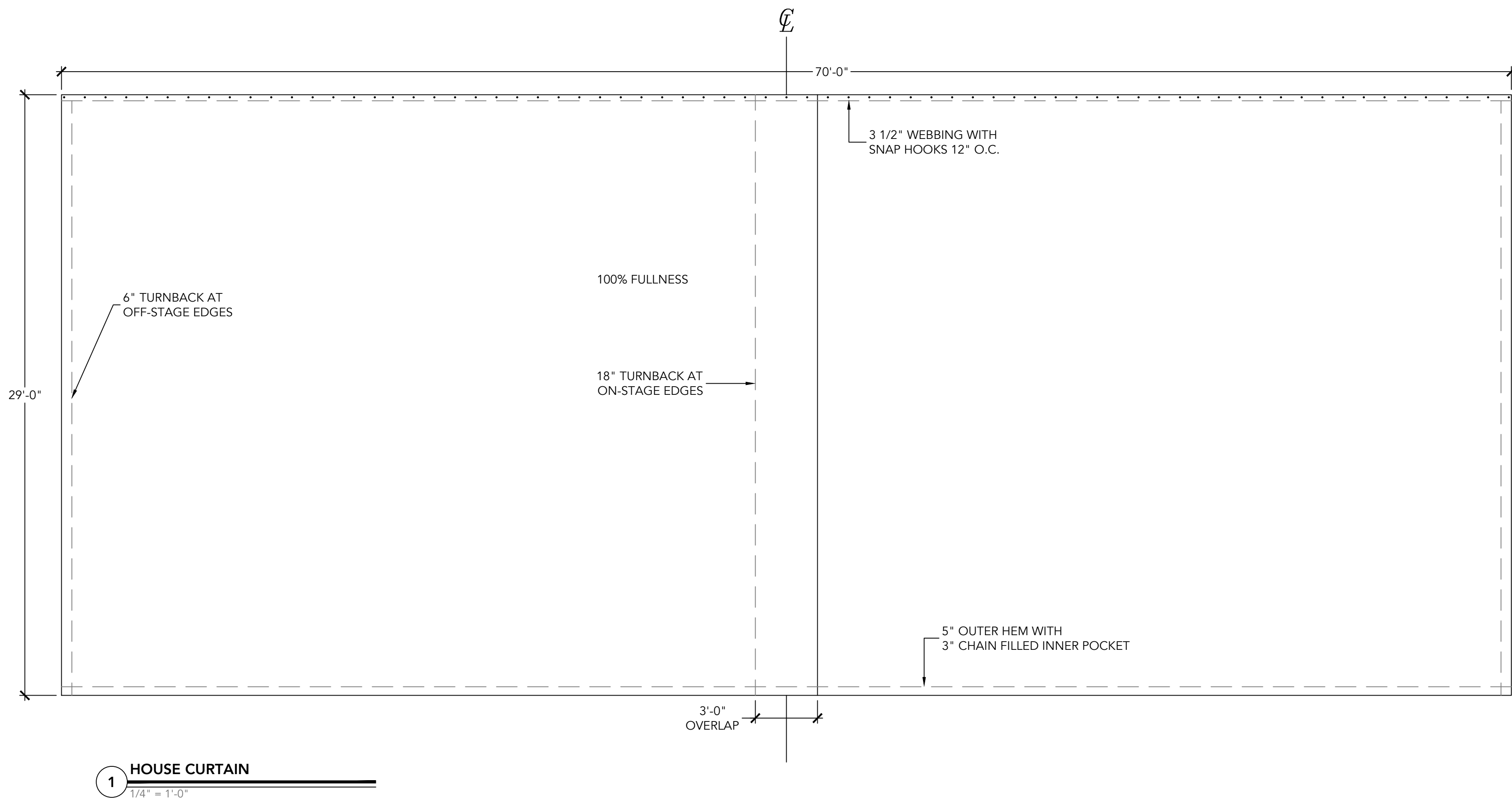


Drumrey Rosane Anderson, Inc.
225 Oakland Road
Studio 205
South Windsor, CT
06074
Tel: 617.864.1700
www.draws.com

260 Charles Street
Studio 300
Waltham, MA
02453
Planning / Architecture / Interior Design
Tel: 617.864.1700
www.draws.com

**Northeast
Metropolitan
Regional
Vocational High
School**
100 Hemlock Road,
Wakefield, MA 01880

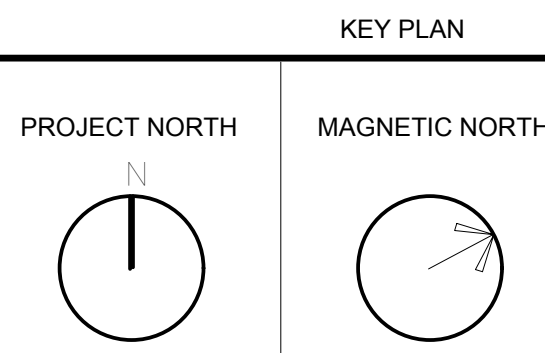
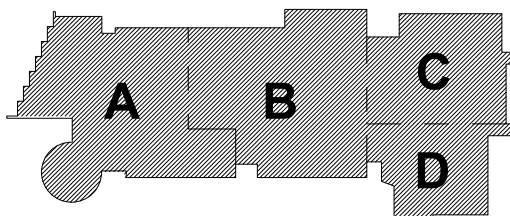
Theatre Consultant
**STUDIO
T+L**
STUDIO T+L LLC
333 4th Street
Brooklyn, NY 11215
718.789.0588
www.Studio-TL.com



DRAPERY SCHEDULE							
ITEM	QUANTITY	HEIGHT	WIDTH	FULLNESS	FABRIC	COLOR	NOTES
HOUSE CURTAIN	2	29'-0"	36'-6"	100%	FABRIC #1 & 2	PER ARCHITECT	
VALENCE CURTAIN	1	6'-6"	62'-0"	75%	FABRIC #1	PER ARCHITECT	
WINDOW CURTAIN	2	28'-6"	26'-6"	75%	FABRIC #1 & 2	PER ARCHITECT	

© COPYRIGHT 2022 DRUMREY ROSANE ANDERSON, INC.

MSBA – 90%
CONSTRUCTION
DOCUMENTS
MAY 12, 2023



**HOUSE AND
WINDOW
TRAVELER
CURTAINS**

Scale: AS NOTED
Job No.: 20202
Drawn By: JL
Date: MARCH 31, 2023

TD-1